



1. PRODUCT SUMMARY

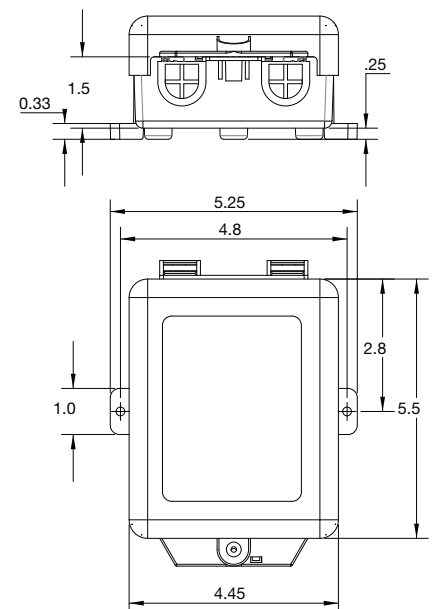
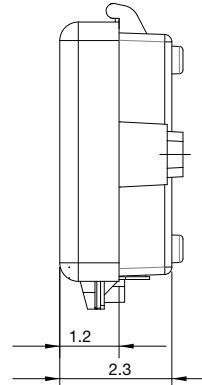
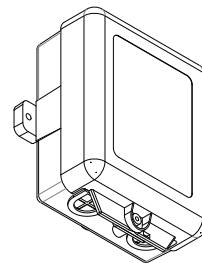
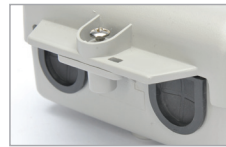
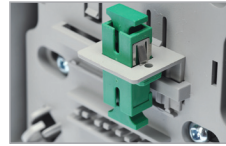
The P126FTT Fiber Transfer Terminal allows the construction/splice crew to connect fiber during initial deployment without needing to return to the site. The service technician can quickly provision fiber services only when requested by the customer.

2. PRODUCT DIMENSIONS

Inside H 9.1"/W: 6.1"/D: 3.1"

3. FEATURES & BENEFITS

- Reduce deployment cost by eliminating site visits required to connect and splice fiber runs.
- Simplify service calls with 'connectorized" fiber weather conditions and extreme environments and ample slack storage capacity.
- Maintain weatherproof integrity with External Wall Mounting Brackets that eliminate the need to drill through box.
- Servicing is faster and easier with removable 1" entry/exit ports that eliminate the need to disconnect fiber before splicing.
- Save time during installation with a 180 degree hinged lid that will not close during service.
- Assure safety and durability with Flame Retardant Polymer that meets UL safety standards and UV protection that complies with F1 Weatherable requirements.



FOR MORE INFORMATION CONTACT:

20160 92A Avenue Langley BC V1M 3A4 Canada
 1.604.881.7875 1.604.881.7835 primexfits.com

1. PRODUCT SUMMARY

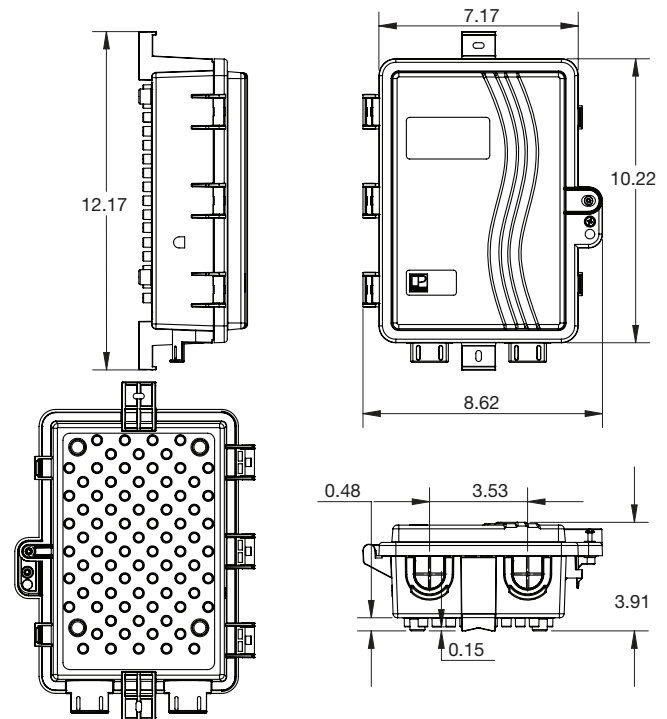
The P750FCC Fiber Cross Connect is designed to provide the flexibility to customize the enclosure to meet your deployment needs on any project. This flexible fiber splice box comes configured to terminate up to 6 fibers on the outside wall or inside the premise.

2. PRODUCT DIMENSIONS

Inside H 9.1" / W: 6.1" / D: 3.1"

3. FEATURES & BENEFITS

- FTTx and BroadBand markets.
- Weather proof design with optional NEMA 4X.
- Dual snap locks to ensure lid seals to base.
- 4 external entry points - 2 x 1" horseshoes and 2 x 3/4" knockouts.
- Mounting hole pattern.
- Security screw grounding post available.
- Save up to 40% over metal alternatives with high impact and flame retardant engineered PVC or optional high temperature polycarbonate.
- Protect your equipment in demanding weather conditions and extreme environments with NEMA 4X, UL and F1 weatherability compliance.
- Allow 24/7 secure access by a service technician with the available override or F81 locking mechanism.
- Deploy quickly and easily with External Wall and Pole Mounting Brackets that eliminate the need to drill through box.



FOR MORE INFORMATION CONTACT:

20160 92A Avenue Langley BC V1M 3A4 Canada
 1.604.881.7875 1.604.881.7835 primexfits.com

1. PRODUCT SUMMARY

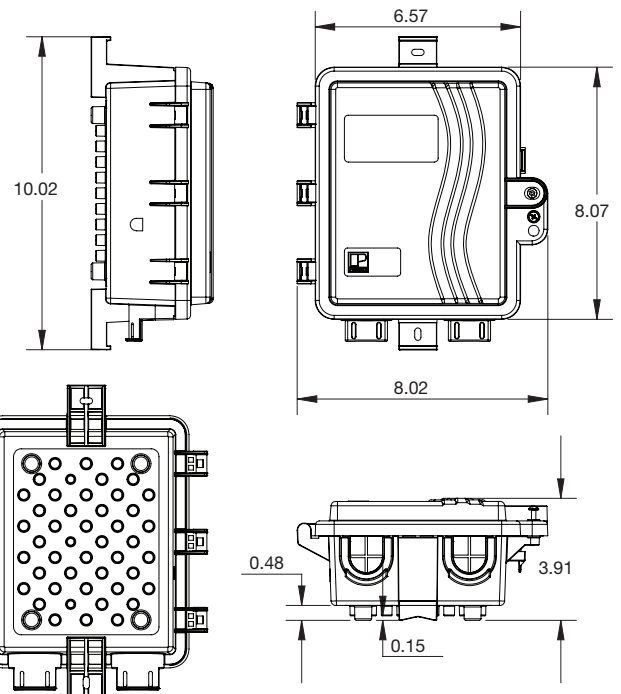
The P1000FCC Fiber Cross Connect is designed to accommodate active or passive components in a compact design that allows for maximum flexibility and efficient use of available space. The compact design can be pre-configured to terminate up to 12 fibers on the outside wall or inside the premise.

2. PRODUCT DIMENSIONS

Inside H 10.25" / W: 8.75" / D: 4.25"

3. FEATURES & BENEFITS

- FTTx and BroadBand markets.
- Weather proof design with optional NEMA 4X.
- Dual snap locks to ensure lid seals to base.
- 4 external entry points - 2 x 1" entry/exit ports and 2 x 3/4" knockouts.
- Mounting hole pattern.
- Security screw grounding post available.
- Save up to 40% over metal alternatives with high impact and flame retardant engineered PVC or optional high temperature polycarbonate.
- Protect your equipment in demanding weather conditions and extreme environments with NEMA 4X, UL and F1 weatherability compliance.
- Allow 24/7 secure access by a service technician with the available override or F81 locking mechanism.
- Deploy quickly and easily with External Wall and Pole Mounting Brackets that eliminate the need to drill through box.



FOR MORE INFORMATION CONTACT:

20160 92A Avenue Langley BC V1M 3A4 Canada
 ☎ 1.604.881.7875 ☎ 1.604.881.7835 primexfits.com

Product Specification Sheet

PRODUCT MODEL CODE

P1500FCC

Fiber Cross Connect

1. PRODUCT SUMMARY

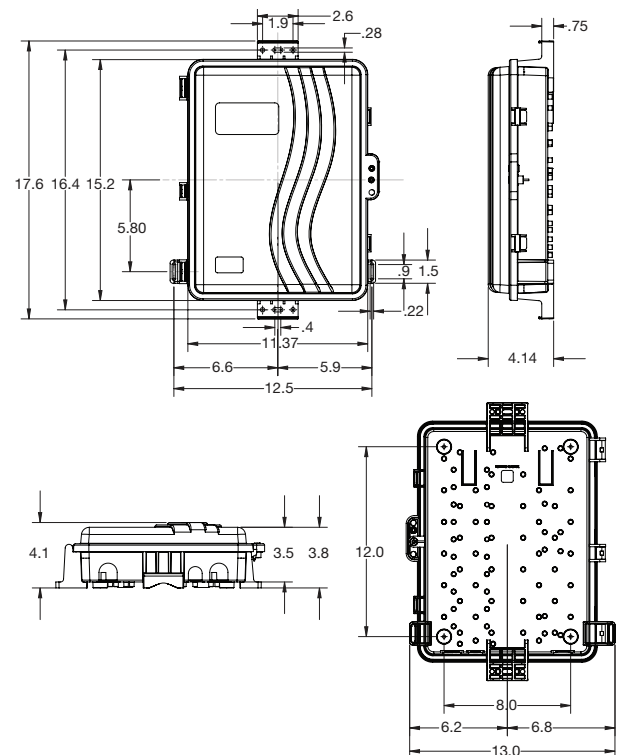
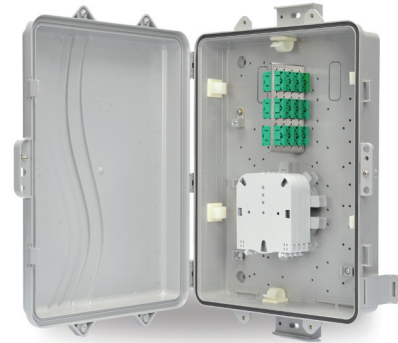
The P1500FCC Fiber Cross Connect is designed to accommodate active or passive components in a compact design that allows for maximum flexibility and efficient use of available space. The compact design can be pre-configured to terminate up to 24 fibers in the outside wall or inside premise.

2. PRODUCT DIMENSIONS

Inside H 14.1"/W: 10.0"/D: 5.25"

3. FEATURES & BENEFITS

- FTTx and BroadBand markets.
- Weather proof design with optional NEMA 4X.
- Dual snap locks to ensure lid seals to base.
- Fast and easy servicing with 3 x 1" entry/exit ports.
- Mounting hole pattern.
- Save up to 40% over metal alternatives with high impact and flame retardant engineered PVC or optional high temperature polycarbonate.
- Protect your equipment in demanding weather conditions and extreme environments with NEMA 4X, UL and F1 weatherability compliance.
- Allow 24/7 secure access by a service technician with the available override or F81 locking mechanism.
- Deploy quickly and easily with External Wall and Pole Mounting Brackets that eliminate the need to drill through box.
- Provides easy and open access via a 180 degree hinged lid and snap lock.



FOR MORE INFORMATION CONTACT:

20160 92A Avenue Langley BC V1M 3A4 Canada
 T 1.604.881.7875 F 1.604.881.7835 primexfits.com



1. PRODUCT SUMMARY

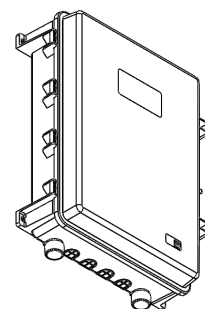
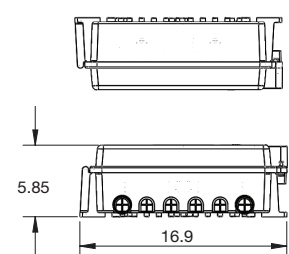
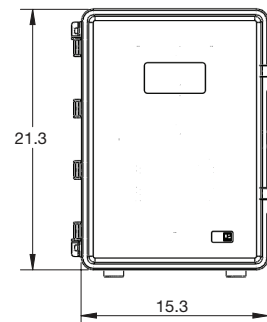
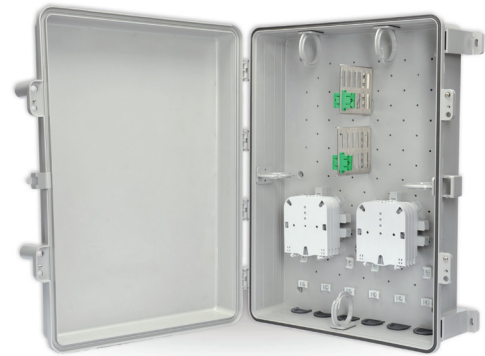
The P2000FCC Fiber Cross Connect is a multi purpose enclosure with a large inner cavity that provides ample room to work in and is ideal for FTTx, FTTH, telecom, CATV, or custom applications. Designed to accommodate active or passive components in a compact design that can be pre-configured to terminate up to 48 fibers.

2. PRODUCT DIMENSIONS

Inside H 20" / W: 14" / D: 5.5"

3. FEATURES & BENEFITS

- FTTx and BroadBand markets.
- Weather proof design with optional NEMA 4X.
- Dual snap locks to ensure lid seals to base.
- Expansion is easy with 6 x 1" entry/exit ports (NEMA 4X has 4 x 1" knockouts)
- Mounting hole pattern.
- Save up to 40% over metal alternatives with high impact and flame retardant engineered PVC or optional high temperature polycarbonate.
- Protect your equipment in demanding weather conditions and extreme environments with NEMA 4X, UL and F1 weatherability compliance.
- Allow 24/7 secure access by a service technician with the available override or F81 locking mechanism.
- Deploy quickly and easily with External Wall and Pole Mounting Brackets that eliminate the need to drill through box.
- Provides easy and open access via a 180 degree hinged lid and snap lock.



FOR MORE INFORMATION CONTACT:

20160 92A Avenue Langley BC V1M 3A4 Canada
 ☎ 1.604.881.7875 📠 1.604.881.7835 primexfits.com

PRIMEX TELECOMMUNICATION

Product Specification Sheet

PRODUCT MODEL CODE

P2100
Structured Wiring

1. PRODUCT SUMMARY

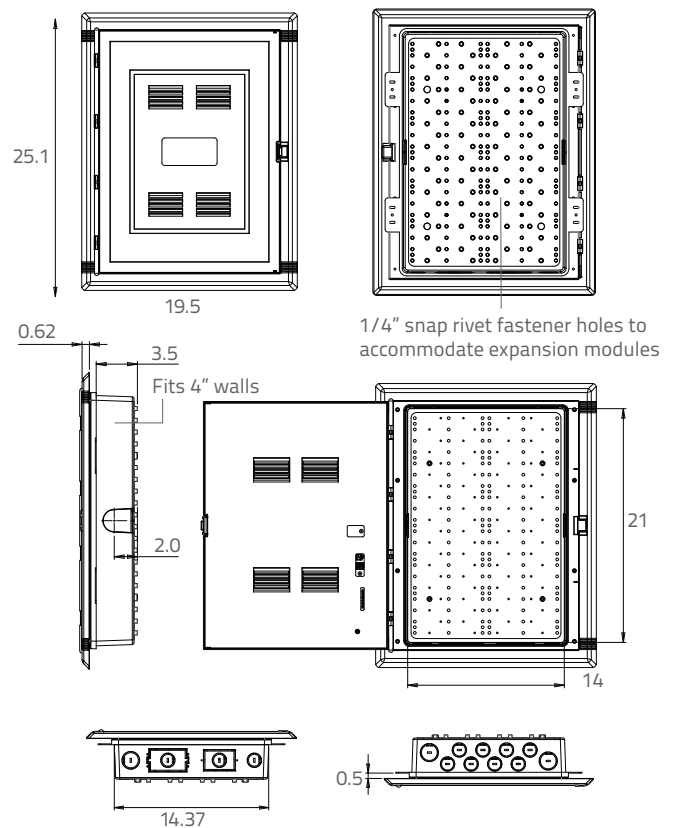
Primex P2100 Structured Wiring Enclosure brings reliability when managing today's inside cable system requirements. Its flexible design provides a convenient and centralized location for easy installation and distribution of multi-play services within residential and commercial premises.

2. PRODUCT DIMENSIONS

Inside H 21"/W: 14"/D: 3.5"

3. FEATURES & BENEFITS

- Install and distribute multi-play services easily from one convenient and centralized location.
- Eliminate interference with equipment such as a router's wireless signal with ABS polymer construction.
- Easy installation and transportation with the lightweight design.
- Multiple entry/exit knockouts on the sides, top, and bottom make them completely adaptable.
- Compatible, Universal Mounting Plate makes configuration fast and easy.
- Reduce installations and repair downtimes and improve system access with 180 degree hinged cover.
- Assure safety and durability with UL safety standard compliance, ABS Flame Retardant Polymer.
- Compatible with most standardized patch panels, voice data, video, and audio quick connect distribution modules.



FOR MORE INFORMATION CONTACT:

20160 92A Avenue Langley BC V1M 3A4 Canada
T 1.604.881.7875 F 1.604.881.7835 primexfits.com

primex  Fit everything. Together.

PRIMEX TELECOMMUNICATION

Product Specification Sheet

PRODUCT MODEL CODE

P3000
Structured Wiring

1. PRODUCT SUMMARY

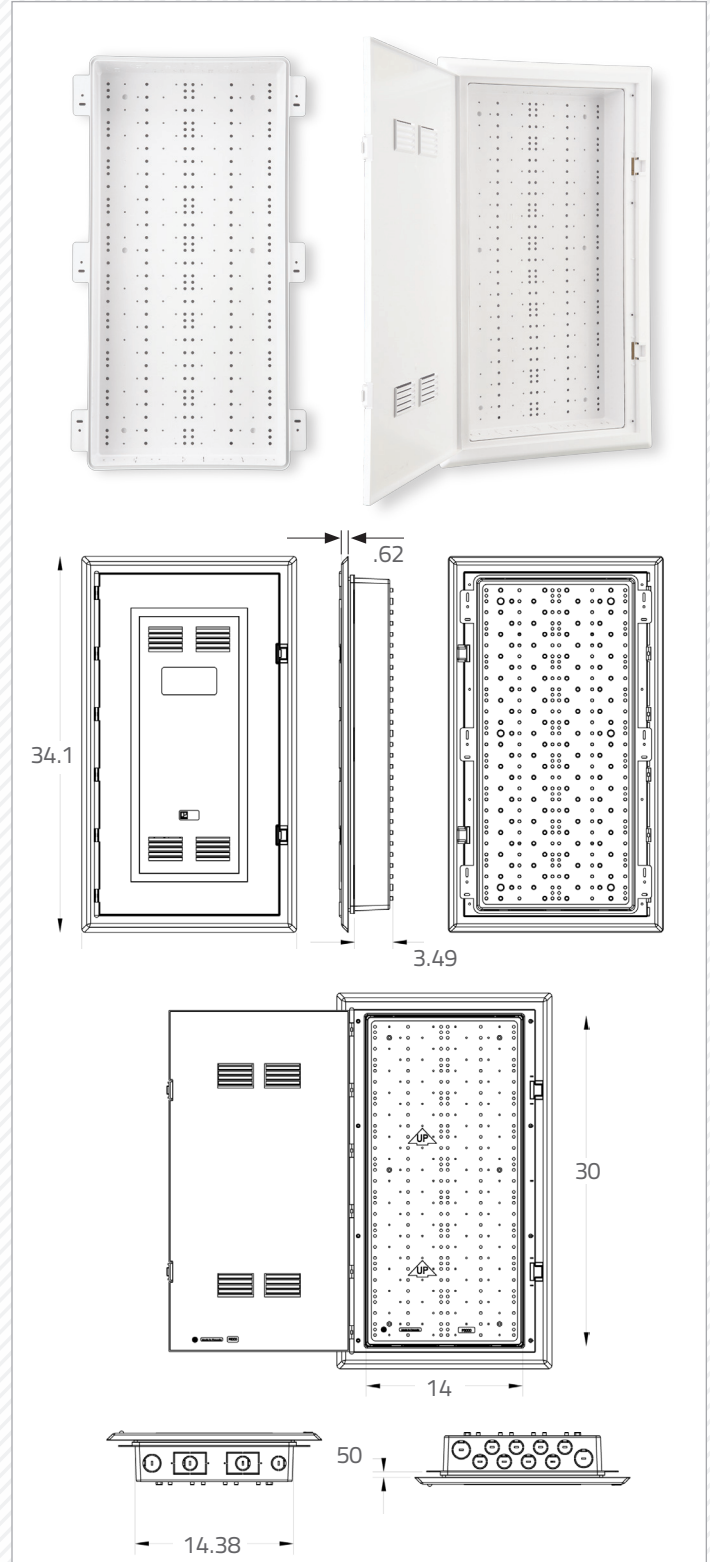
Primex P3000 Structured Wiring Enclosure brings reliability when managing today's inside cable system requirements. This flexible design provides a convenient and centralized location for easy installation and distribution of multi-play services within residential and commercial premises.

2. PRODUCT DIMENSIONS

Inside H 30"/W: 14"/D: 3.5"

3. FEATURES & BENEFITS

- One convenient and centralized location for easy installation and distribution of multi-play services.
- Eliminate interference with equipment such as a router's wireless signal with ABS polymer construction.
- Easy installation and transportation with the lightweight design.
- Easier cable routing and entry with twelve 1" entry/exit ports and two 1/4" knockouts.
- Increase flexibility if installation with a mounting hole pattern.
- Reduce installations and repair downtimes and improve system access with 180 degree hinged cover.
- Assure safety and durability with UL safety standard compliance, ABS Flame Retardant Polymer.



FOR MORE INFORMATION CONTACT:

20160 92A Avenue Langley BC V1M 3A4 Canada
T 1.604.881.7875 F 1.604.881.7835 primexfits.com

primex  Fit everything. Together.

PRIMEX

Product Specification Sheet

PRODUCT MODEL CODE

P4200
Structured Wiring

1. PRODUCT SUMMARY

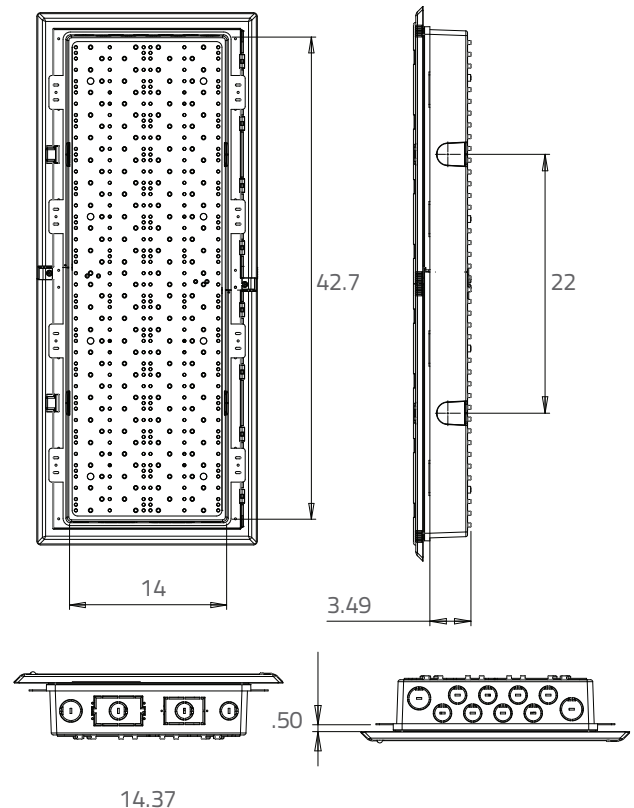
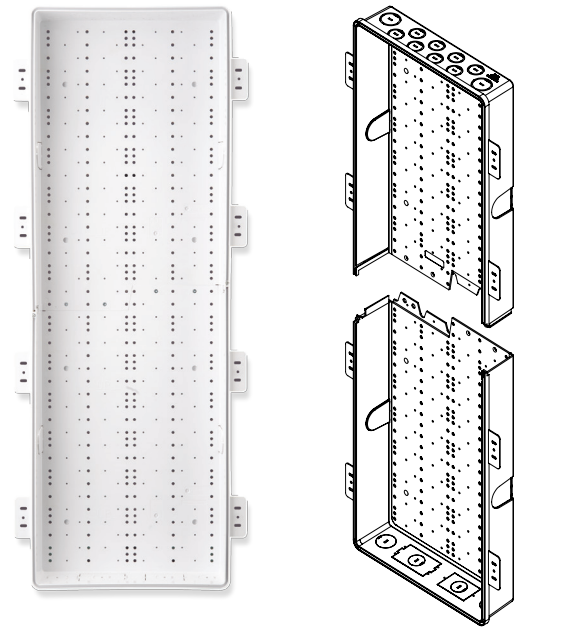
Primex P4200 Structured Wiring Enclosure brings reliability when managing today's inside cable system requirements. Its flexible design provides a convenient and centralized location for easy installation and distribution of multi-play services within residential and commercial premises.

2. PRODUCT DIMENSIONS

Inside H 42"/W: 14"/D: 3.5"

3. FEATURES & BENEFITS

- Patent-pending, modular design provides simple scalability for a variety of space requirements.
- Install and distribute multi-play services easily from one convenient and centralized location.
- Eliminate interference with equipment such as a router's wireless signal with ABS polymer construction.
- Easy installation and transportation with the lightweight design.
- Multiple entry/exit knockouts on the sides, top, and bottom make them completely adaptable.
- Compatible, Universal Mounting Plate makes configuration fast and easy.
- Reduce installations and repair downtimes and improve system access with 180 degree hinged cover.
- Assure safety and durability with UL safety standard compliance, ABS Flame Retardant Polymer.



FOR MORE INFORMATION CONTACT:

20160 92A Avenue Langley BC V1M 3A4 Canada
T 1.604.881.7875 F 1.604.881.7835 primexfits.com

primex  Fit everything. Together.

20160 92A Avenue
Langley BC V1M 3A4 Canada

 1.877.881.7875

 1.604.881.7835

primexfits.com