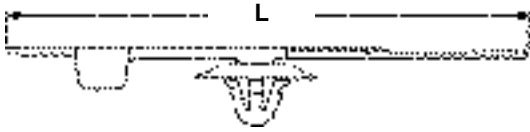


Center Mount, Domed Push Mount Ties

Centers the mount on all bundle diameters. Mount is molded in a stationary position for easy assembly.

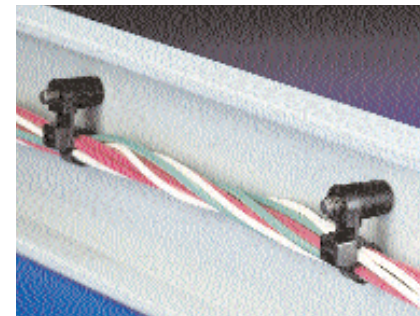
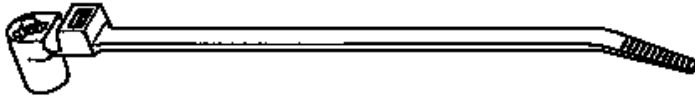


Center Mount, Domed Push Mount Ties

| HellermannTyton Part No. | Material/Color | Mounting Hole Dia. In. (mm.) | Max Panel Thickness In. (mm.) | Min. Tensile Strength (lbs.) | Maximum Bundle Dia. In. (mm.) | Approx. Length In. (mm.) | Approx. Width In. (mm.) | Pkg. Qty. | HellermannTyton Installation Tools |
|--------------------------|-----------------------------------|------------------------------|-------------------------------|------------------------------|-------------------------------|--------------------------|-------------------------|-----------|------------------------------------|
| T50RSP | Nylon 6/6, Heat Stabilized, Black | .24" (6.0) to .26" (6.5) | .05" (1.3) | 50 | 1-3/4" (45.0) | 7-1/2" (190) | .18" (4.7) | 1000 | N/A |

Stud Mount Ties

The stud mount tie is a one-piece cable tie, made from black, high impact nylon 6/6. Bundling and mounting are accomplished with one unit. The stud mount tie is designed for use on the 1/4"-20 UNC thread of a stud or the exposed threads of a machine screw.

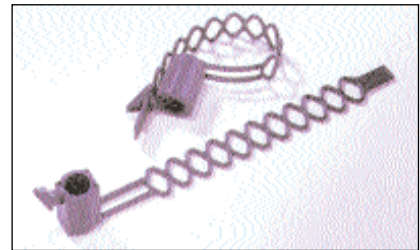


Stud Mount Ties

| HellermannTyton Part No. | Material/Color | Recommended Stud Size | Min. Tensile Strength (lbs.) | Maximum Bundle Dia. In. (mm.) | Approx. Length In. (mm.) | Approx. Width In. (mm.) | Pkg. Qty. | HellermannTyton Installation Tools |
|--------------------------|-------------------------------|-----------------------|------------------------------|-------------------------------|--------------------------|-------------------------|-----------|------------------------------------|
| T120RSM0HIRK2 | Nylon 6/6, High Impact, Black | 1/4" - 20 UNC | 120 | 4" (101.6) | 16" (406.4) | .30" (7.6) | 50 | TWT2, MK6PN, MK9 |

Ladder Style Stud Mount Ties

Ladder style tie mounts easily onto #10-24" (5 mm) stud. Unique latch allows for easy re-entry to bundles.



Ladder Style Stud Mount Ties

| HellermannTyton Part No. | Material/Color | Recommended Stud Size In. (mm.) | Min. Tensile Strength (lbs.) | Maximum Bundle Dia. In. (mm.) | Approx. Length In. (mm.) | Approx. Width In. (mm.) | Pkg. Qty. | HellermannTyton Installation Tools |
|--------------------------|------------------|---------------------------------|------------------------------|-------------------------------|--------------------------|-------------------------|-----------|------------------------------------|
| FBB100 | Nylon 6/6, Black | #10-24" (5.0) | N/A | 7/8" (23.0) | 4.0" (100) | .40" (10.0) | 500 | N/A |
| FBB140 | | | | 1-1/2" (38.0) | 5-5/8" (142) | .40" (10.0) | 500 | |
| FBB185 | | | | 2" (50.0) | 7-1/4" (185) | .40" (10.0) | 500 | |

Flexible Head Stud Mount Ties

Flexible head wraps around cable bundle for easy installation. Tie mounts onto #10-24" (5mm) stud.



Flexible Head Stud Mount Ties

| HellermannTyton Part No. | Material/Color | Recommended Stud Size In. (mm.) | Min. Tensile Strength (lbs.) | Maximum Bundle Dia. In. (mm.) | Approx. Length In. (mm.) | Approx. Width In. (mm.) | Pkg. Qty. | HellermannTyton Installation Tools |
|--------------------------|------------------|---------------------------------|------------------------------|-------------------------------|--------------------------|-------------------------|-----------|------------------------------------|
| T50RS5 | Nylon 6/6, Black | #10-24" (5.0) | 50 | 1-1/2" (40) | 7-1/2" (190) | .18" (4.6) | 100 | N/A |

Dual Clamp Ties

HellermannTyton's dual clamp ties are designed to provide parallel spacing between hoses, wires, cables and tubing, protecting them from abrasion. These ties have an optional mounting hole for securing bundles along the chassis of trucks, trailers, and automobiles. The unique, one-piece design features the dual head centered on the strap.



U.S. Patent Number 5,966,781

Dual Clamp Ties

| HellermannTyton Part No. | Material/Color | Recommended Stud Size In. (mm.) | Min. Tensile Strength (lbs.) | Maximum Bundle Dia. In. (mm.) | Approx. Length In. (mm.) | Approx. Width In. (mm.) | Pkg. Qty. | HellermannTyton Installation Tools |
|----------------------------|-------------------------------------|---------------------------------|------------------------------|-------------------------------|--------------------------|-------------------------|-----------|------------------------------------|
| DCT90HIRK2 DCT90HIRC2 | Nylon 6/6, High Impact, Black | 1/4" (6.35) | 150 | 1.3" each side (33.02) | 12.9" (327.66) | .50" (12.7) | 50 100 | MK9 or T250 |
| DCT110HIRK2 DCT110HIRC2 | | 1/4" (6.35) | 150 | 2.3" each side (58.42) | 19.2" (487.68) | .50" (12.7) | 50 100 | |