

5.8GHz 29dBi Parabolic Dish Antenna

Model Number TR-5.8-29DB-ANT

About Tranzeo

Tranzeo Wireless Technologies, Inc. has emerged as an industry leader in designing, manufacturing and distributing high-speed wireless broadband communication systems all over the world.

Distributors

North American

Double Radius, Inc.
866-891-3602
sales@doubleradius.com

Electro-Comm
1-800-525-0173
sales@electro-comm.com

RF Linx
513-777-2774
sales@rflinx.com

International

Orbitel Telecom,
e Informática Ltda.,
Brasilia
+55 61 341-4100
comercial@orbitel.com.br

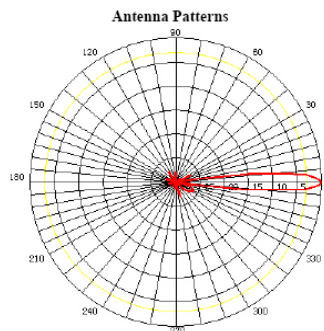
Electrical Specifications

Frequency range	5725 - 5825 MHz
Gain	29dB
VSWR	1.5
Impedance	50Ω
Horizontal beamwidth	6°
Vertical beamwidth	6°
Polarization	Horizontal or Vertical
Maximum input power	100W
Front to Back Ratio	>35dB
Connector	N-Female
Lightning Protection	Direct Ground

Mechanical Specifications

Dimensions (L x W)	23.6" x 23.6"	
Weight of Antenna	11 lbs	
Installation position adjustment	Horizontal	360°
	Angle of Pitch	0 - 15°
Radome Material	Fiberglass	
Rated Wind Speed	125 mph	
Wind Loading	100 mph	113 lbs
	125 mph	177 lbs
	100 mph with 1/2" radial ice	115 lbs
	100 mph	75 lbs
Wind Loading with Radome	125 mph	116 lbs
	100 mph with 1/2" radial ice	78 lbs

Antenna Patterns



Parabolic dish antenna



Optional Radome

Recommended Accessories

Lightning Arrestors

- 350V, 100MHz to 3GHz, N Fem to N Fem (p/n PAWSP3-350-FF)
- 350V, 100MHz to 3GHz, N Fem to N Male (p/n PAWSP3-350-FM)
- 230V, DC to 6GHz, N Female to N Female (p/n PAWSP6-230-BFF)
- 230V, DC to 6GHz, N Female to N Male (p/n PAWSP6-230-BFM)

