



HAMMOND
MANUFACTURING™



PB-02

Outlet Strips &
Line Transformers

We are...

Small Electronic Enclosures...



Electrical Enclosures...



Electronic Racks...



Electronic Transformers...



Service Driven...

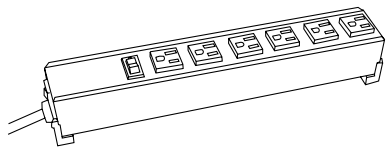


The best products in the world are no good to you if you can't get them!
We have teamed up with the best stocking distributors to serve you quickly and efficiently. We stock what we catalog in our 90,000 sq. ft. central warehouse.

Index

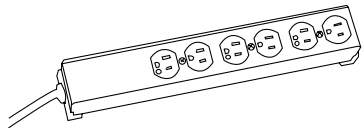
Series	Page	Series	Page	Series	Page
1580.....	18	1586.....	7, 8	175.....	28, 29
1581.....	21	1587.....	6, 7, 8	176.....	29
1582.....	13, 16, 22	1588.....	6, 7, 8	Accessories.....	29, 32
1583.....	11, 15, 16, 22	1589.....	4, 10, 17	CV.....	30
1584.....	2, 3, 5	171.....	31	P0.....	23, 24, 25, 26
1585.....	6, 7, 8	172.....	31	ZT.....	20

Contents



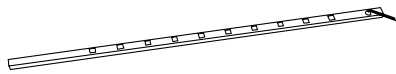
Industrial / Commercial Grade

Page 2 - 4



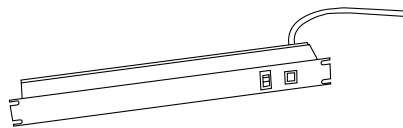
Hospital Grade

Page 5



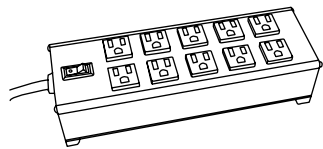
Vertical Rack Mount

Page 6 - 10



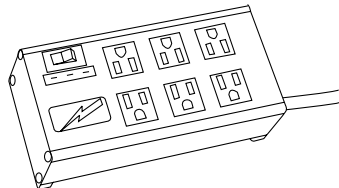
Rack Mount Power Panels

Page 11 - 17



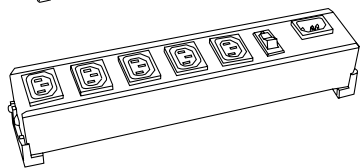
Power Block

Page 18



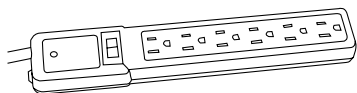
Surge Suppressors

Page 19 - 20



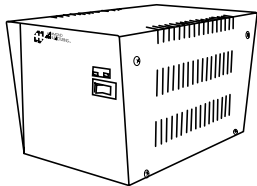
International

Page 21 - 22



Plastic

Page 23 - 27



Auto, Constant Voltage & Isolating
Transformers

Page 28 - 31

15 Amp Industrial/Commercial Grade

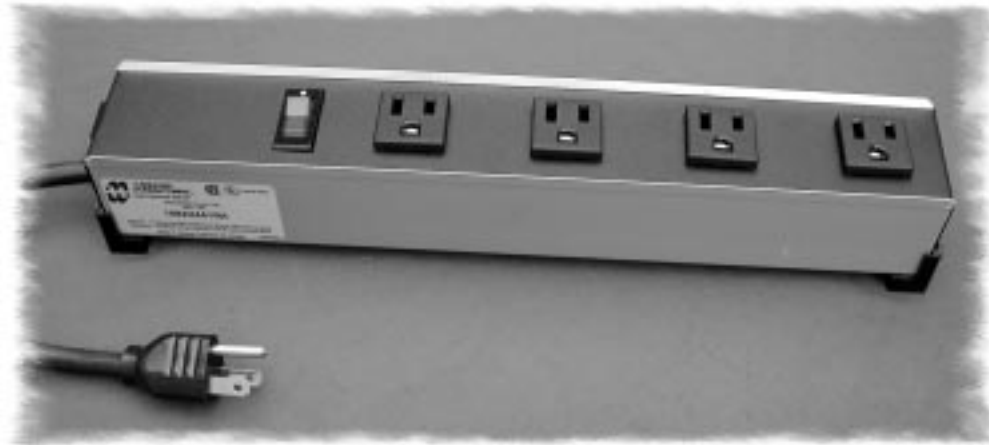


- ~ Built to meet the rugged requirements of industrial and commercial use.
- ~ All metal housing – tough extruded aluminum case with black powder-coated steel cover.
- ~ Heavy-duty 14 gauge wire cord – 14/3 SJTW wire for extreme temperature ranges.
- ~ Integral molded plug available in straight-blade (NEMA 5-15P) or twist-lock (NEMA L5-15P) configurations.
- ~ Separate mounting feet with keyhole slots provide for work station mounting if desired.
- ~ Available with lighted on/off switch or red pilot light to indicate power on.
- ~ Includes 15A, 125VAC resettable circuit breaker to prevent accidental line overload.
- ~ CSA certified and UL 1363 listed

15 Amp Industrial/Commercial Grade

Part No.	Outlets	On-Off Switch	Pilot Light	Cord Length	Plug Type	Dimensions (Inches)	Electrical Rating	Shipping Weight
1584H4A1	4	Yes	-	6'	Straight	11 x 2 x 2	120VAC /15A	1.8 lbs
1584H4B1	4	Yes	-	15'	Straight	11 x 2 x 2	120VAC /15A	1.8 lbs
1584H4C1	4	Yes	-	6'	Twist Lock	11 x 2 x 2	120VAC /15A	1.8 lbs
1584H4D1	4	Yes	-	15'	Twist Lock	11 x 2 x 2	120VAC /15A	1.8 lbs
1584H5A1	5	Yes	-	6'	Straight	14 x 2 x 2	120VAC /15A	1.9 lbs
1584H5B1	5	Yes	-	15'	Straight	14 x 2 x 2	120VAC /15A	1.9 lbs
1584H5C1	5	Yes	-	6'	Twist Lock	14 x 2 x 2	120VAC /15A	1.9 lbs
1584H5D1	5	Yes	-	15'	Twist Lock	14 x 2 x 2	120VAC /15A	1.9 lbs
1584H6A1	6	Yes	-	6'	Straight	14 x 2 x 2	120VAC /15A	2.0 lbs
1584H6B1	6	Yes	-	15'	Straight	14 x 2 x 2	120VAC /15A	2.0 lbs
1584H6C1	6	Yes	-	6'	Twist Lock	14 x 2 x 2	120VAC /15A	2.0 lbs
1584H6D1	6	Yes	-	15"	Twist Lock	14 x 2 x 2	120VAC /15A	2.0 lbs
1584H7A1	7	Yes	-	6'	Straight	17 x 2 x 2	120VAC /15A	2.1 lbs
1584H7B1	7	Yes	-	15'	Straight	17 x 2 x 2	120VAC /15A	2.1 lbs
1584H7C1	7	Yes	-	6'	Twist Lock	17 x 2 x 2	120VAC /15A	2.1 lbs
1584H7D1	7	Yes	-	15'	Twist Lock	17 x 2 x 2	120VAC /15A	2.1 lbs
1584H8A1	8	Yes	-	6'	Straight	17 x 2 x 2	120VAC /15A	2.2 lbs
1584H8B1	8	Yes	-	15'	Straight	17 x 2 x 2	120VAC /15A	2.2 lbs
1584H8C1	8	Yes	-	6'	Twist Lock	17 x 2 x 2	120VAC /15A	2.2 lbs
1584H8D1	8	Yes	-	15'	Twist Lock	17 x 2 x 2	120VAC /15A	2.2 lbs
1584T4A1	4	-	Yes	6'	Straight	11 x 2 x 2	120VAC /15A	1.8 lbs
1584T4B1	4	-	Yes	15'	Straight	11 x 2 x 2	120VAC /15A	1.8 lbs
1584T4C1	4	-	Yes	6'	Twist Lock	11 x 2 x 2	120VAC /15A	1.8 lbs
1584T4D1	4	-	Yes	15'	Twist Lock	11 x 2 x 2	120VAC /15A	1.8 lbs
1584T5A1	5	-	Yes	6'	Straight	14 x 2 x 2	120VAC /15A	1.9 lbs
1584T5B1	5	-	Yes	15'	Straight	14 x 2 x 2	120VAC /15A	1.9 lbs
1584T5C1	5	-	Yes	6'	Twist Lock	14 x 2 x 2	120VAC /15A	1.9 lbs
1584T5D1	5	-	Yes	15'	Twist Lock	14 x 2 x 2	120VAC 15A	1.9 lbs
1584T6A1	6	-	Yes	6'	Straight	14 x 2 x 2	120VAC /15A	2.0 lbs
1584T6B1	6	-	Yes	15'	Straight	14 x 2 x 2	120VAC /15A	2.0 lbs
1584T6C1	6	-	Yes	6'	Twist Lock	14 x 2 x 2	120VAC /15A	2.0 lbs
1584T6D1	6	-	Yes	15'	Twist Lock	14 x 2 x 2	120VAC /15A	2.0 lbs
1584T7A1	7	-	Yes	6'	Straight	17 x 2 x 2	120VAC /15A	2.1 lbs
1584T7B1	7	-	Yes	15'	Straight	17 x 2 x 2	120VAC /15a	2.1 lbs
1584T7C1	7	-	Yes	6'	Twist Lock	17 x 2 x 2	120VAC /15A	2.1 lbs
1584T7D1	7	-	Yes	15'	Twist Lock	17 x 2 x 2	120VAC /15A	2.1 lbs
1584T8A1	8	-	Yes	6'	Straight	17 x 2 x 2	120VAC /15A	2.2 lbs
1584T8B1	8	-	Yes	15'	Straight	17 x 2 x 2	120VAC /15A	2.2 lbs
1584T8C1	8	-	Yes	6'	Twist Lock	17 x 2 x 2	120VAC /15A	2.2 lbs
1584T8D1	8	-	Yes	15'	Twist Lock	17 x 2 x 2	120VAC /15A	2.2 lbs





- ~ Receptacles turned 90° to allow space for wall transformers.
- ~ Built to meet the rugged requirements of industrial and commercial use.
- ~ All metal housing – tough extruded aluminum case with black powder-coated steel cover.
- ~ Heavy-duty cord – 14/3 SJTW wire for extreme temperature ranges.
- ~ Integral molded straight -blade (NEMA 5-15P) or twist lock (NEMA L5-15P) configuration.
- ~ Separate mounting feet with keyhole slots provide for work station mounting if desired.
- ~ Available with lighted on/off switch or red pilot light to indicate power on.
- ~ Includes 15A, 125VAC circuit breaker to prevent accidental line overload.
- ~ CSA certified and UL 1363 listed



15 Amp Industrial / Commercial Grade with 90° Receptacles

Part No.	Outlets	On-Off Switch	Pilot Light	Plug Type	Cord Length	Dimensions (Inches) LxWxH	Electrical Rating	Shipping Weight
1584H4A1RA	4	Yes	-	Straight	6'	14 x 2 x 2	120VAC/15A	1.8 lbs
1584H4B1RA	4	Yes	-	Straight	15'	14 x 2 x 2	120VAC/15A	1.8 lbs
1584H4C1RA	4	Yes	-	Twist Lock	6'	14 x 2 x 2	120VAC/15A	1.8 lbs
1584H4D1RA	4	Yes	-	Twist Lock	15'	14 x 2 x 2	120VAC/15A	1.8 lbs
1584T4A1RA	4	-	Yes	Straight	6'	14 x 2 x 2	120VAC/15A	1.8 lbs
1584T4B1RA	4	-	Yes	Straight	15'	14 x 2 x 2	120VAC/15A	1.8 lbs
1584T4C1RA	4	-	Yes	Twist Lock	6'	14 x 2 x 2	120VAC/15A	1.8 lbs
1584T4D1RA	4	-	Yes	Twist Lock	15'	14 x 2 x 2	120VAC/15A	1.8 lbs
1584H6A1RA	6	Yes	-	Straight	6'	17 x 2 x 2	120VAC/15A	2.0 lbs
1584H6B1RA	6	Yes	-	Straight	15'	17 x 2 x 2	120VAC/15A	2.0 lbs
1584H6C1RA	6	Yes	-	Twist Lock	6'	17 x 2 x 2	120VAC/15A	2.0 lbs
1584H6D1RA	6	Yes	-	Twist Lock	15'	17 x 2 x 2	120VAC/15A	2.0 lbs
1584T6A1RA	6	-	Yes	Straight	6'	17 x 2 x 2	120VAC/15A	2.0 lbs
1584T6B1RA	6	-	Yes	Straight	15'	17 x 2 x 2	120VAC/15A	2.0 lbs
1584T6C1RA	6	-	Yes	Twist Lock	6'	17 x 2 x 2	120VAC/15A	2.0 lbs
1584T6D1RA	6	-	Yes	Twist Lock	15'	17 x 2 x 2	120VAC/15A	2.0 lbs



20 Amp Industrial/Commercial Grade



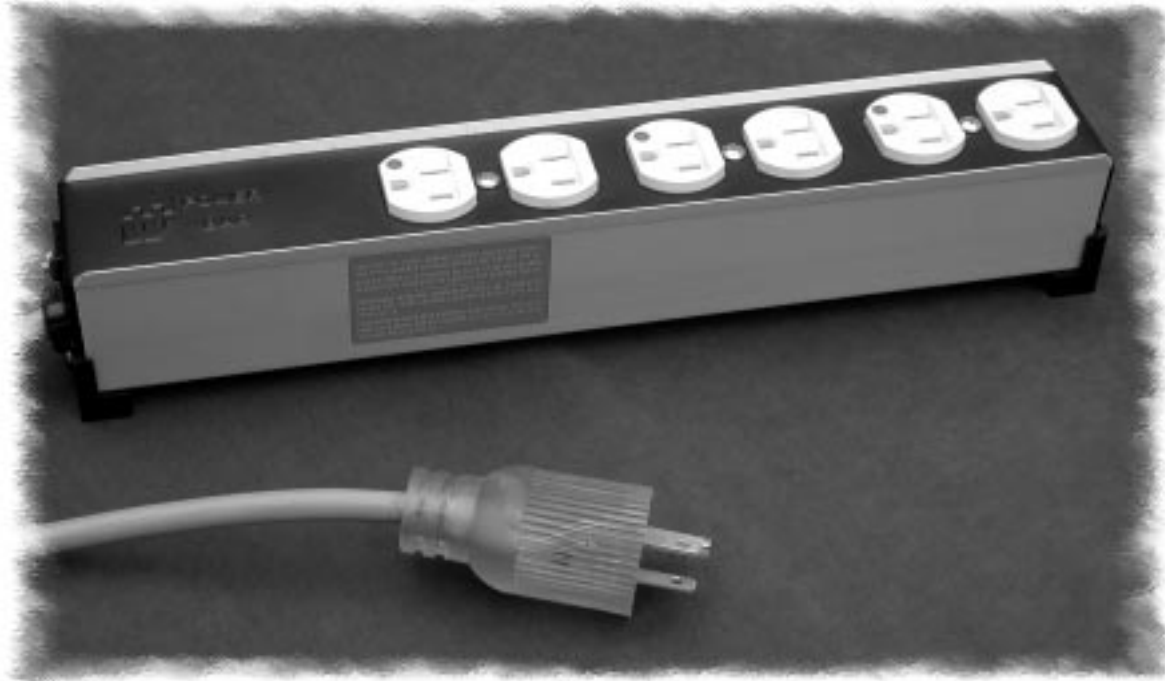
- ~ Built to meet the rugged requirements of industrial and commercial use.
- ~ All metal housing – tough extruded aluminum case with black powder-coated steel cover.
- ~ Heavy-duty receptacles rated for 20A, 125VAC.
- ~ Heavy-duty power cord – 12/3 SJTW for extreme temperature ranges.
- ~ Integral molded plug with straight blade (Nema 5-20P) or twist-lock (Nema L5-20P) configuration
- ~ Available with on/off switch or red pilot light to indicate power on.
- ~ Includes 20A, 125VAC circuit breaker to prevent accidental line overload.
- ~ Mounting feet with keyhole slots provide for work station mounting if desired.
- ~ CSA certified.
- ~ UL listed.

20 Amp Industrial/Commercial Grade

Part No.	Outlets	On-Off Switch	Pilot Light	Cord Length	Plug Type	Dimensions (Inches)	Electrical Rating	Shipping Weight
1589H4C1	4	Yes	-	6'	Twist Lock	11 x 2 x 2	120VAC/20A	3.0 lbs
1589H4D1	4	Yes	-	15'	Twist Lock	11 x 2 x 2	120VAC/20A	3.5 lbs
1589H4F1	4	Yes	-	6'	Straight	11 x 2 x 2	120VAC/20A	3.0 lbs
1589H4G1	4	Yes	-	15'	Straight	11 x 2 x 2	120VAC/20A	3.5 lbs
1589H6C1	6	Yes	-	6'	Twist Lock	14 x 2 x 2	120VAC/20A	3.0 lbs
1589H6D1	6	Yes	-	15'	Twist Lock	14 x 2 x 2	120VAC/20A	3.5 lbs
1589H6F1	6	Yes	-	6'	Straight	14 x 2 x 2	120VAC/20A	3.0 lbs
1589H6G1	6	Yes	-	15'	Straight	14 x 2 x 2	120VAC/20A	3.5 lbs
1589H8C1	8	Yes	-	6'	Twist Lock	17 x 2 x 2	120VAC/20A	3.2 lbs
1589H8D1	8	Yes	-	15'	Twist Lock	17 x 2 x 2	120VAC/20A	3.7 lbs
1589H8F1	8	Yes	-	6'	Straight	17 x 2 x 2	120VAC/20A	3.2 lbs
1589H8G1	8	Yes	-	15'	Straight	17 x 2 x 2	120VAC/20A	3.7 lbs
1589T4C1	4	-	Yes	6'	Twist Lock	11 x 2 x 2	120VAC/20A	3.0 lbs
1589T4D1	4	-	Yes	15'	Twist Lock	11 x 2 x 2	120VAC/20A	3.5 lbs
1589T4F1	4	-	Yes	6'	Straight	11 x 2 x 2	120VAC/20A	3.0 lbs
1589T4G1	4	-	Yes	15'	Straight	11 x 2 x 2	120VAC/20A	3.5 lbs
1589T6C1	6	-	Yes	6'	Twist Lock	14 x 2 x 2	120VAC/20A	3.0 lbs
1589T6D1	6	-	Yes	15'	Twist Lock	14 x 2 x 2	120VAC/20A	3.5 lbs
1589T6F1	6	-	Yes	6'	Straight	14 x 2 x 2	120VAC/20A	3.0 lbs
1589T6G1	6	-	Yes	15'	Straight	14 x 2 x 2	120VAC/20A	3.5 lbs
1589T8C1	8	-	Yes	6'	Twist Lock	17 x 2 x 2	120VAC/20A	3.2 lbs
1589T8D1	8	-	Yes	15'	Twist Lock	17 x 2 x 2	120VAC/20A	3.7 lbs
1589T8F1	8	-	Yes	6'	Straight	17 x 2 x 2	120VAC/20A	3.2 lbs
1589T8G1	8	-	Yes	15'	Straight	17 x 2 x 2	120VAC/20A	3.7 lbs



15 Amp Hospital Grade



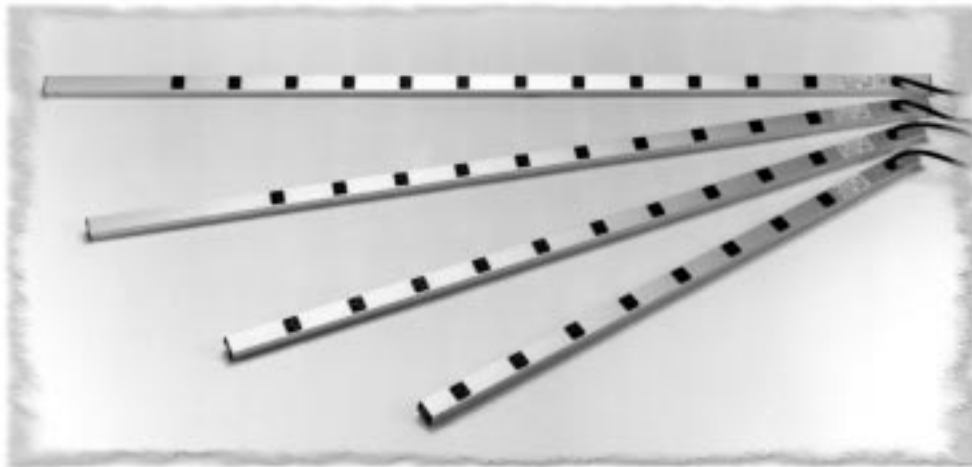
- ~ Designed to meet the special requirements for hospital, institutional and chronic care use.
- ~ All metal housing – tough extruded aluminum case with black powder-coated steel cover.
- ~ Comes with hospital grade “Green Dot” white receptacles, line cord and plug.
- ~ Heavy-duty white hospital grade receptacles, securely fastened onto the housing and interconnected with solidly bonded bus bars. All bus bars are double connected with convection pressure sensitive clamp and safety screw (also, perfect for ground sensitive audio applications).
- ~ An additional grounding screw is provided on the case for any further external grounding requirements.
- ~ Heavy-duty 14 gauge power cord – 14/3 SJT with “Green Dot” hospital grade clear molded plug.
- ~ Unit exceeds NEMA requirements for low leakage ground return and for withstanding impact or continuous physical shock without loss of grounding path continuity when plugged into hospital grade source receptacles.
- ~ Includes 15A, 125VAC resettable circuit breaker to prevent accidental line overload.
- ~ Mounting feet with keyhole slots provide for work station mounting if desired.
- ~ CSA certified – hospital grade.
- ~ UL 1363 listed.

15 Amp Hospital Grade



Part No.	Outlets	Cord Length	Dimensions (Inches)	Electrical Rating	Shipping Weight
1584T4DH6	4	6'	11 x 2 x 2	125VAC /15A	2.5 lbs
1584T4DH15	4	15'	11 x 2 x 2	125VAC/15A	3.5 lbs
1584T6DH6	6	6'	14 x 2 x 2	125VAC /15A	2.7 lbs
1584T6DH15	6	15'	14 x 2 x 2	125VAC /15A	3.7 lbs
1584T8DH6	8	6'	17 x 2 x 2	125VAC /15A	2.9 lbs
1584T8DH15	8	15'	17 x 2 x 2	125VAC /15A	3.9 lbs

15 Amp Vertical Rack Mount



- ~ Designed for power distribution for equipment racks – also handy for work benches.
- ~ Rugged extruded aluminum case with 1 5/8" x 1 3/8" profile.
- ~ Receptacles are 1" square and are equally spaced over the length of the power strip.
- ~ Heavy-duty 14 gauge wire power cord – 14/3 SJTW for extreme temperature ranges.
- ~ Integral molded plug available in straight blade (Nema 5-15P) or twist-lock (Nema L5-15P) configuration.
- ~ Available with surge protection, on/off switch or red pilot light to indicate power on (see tables).
- ~ Includes 15A, 125VAC circuit breaker to prevent accidental line overload.
- ~ Includes hardware for mounting to rack Amhal struts or relay rack sides.
- ~ Electrical rating 120VAC/15A
- ~ For additional hardware kit, order part number **1585CLIP**
- ~ **NOTE:** To properly use in racks, allow sufficient depth **BEHIND** the rear panel rails for vertical mounting to amhul struts.
- ~ CSA certified.
- ~ UL listed (pending on the surge models)

15 Amp Vertical Rack Mount Power Strips With Surge Protection

Part No.	Outlets	On-Off Switch	Pilot Light	Cord Length	Plug Type	Length	Electrical Rating	Shipping Weight
1585H8A1S	8	Yes	-	6'	Straight	48"	120VAC/15A	3.5 lbs
1585H8B1S	8	Yes	-	15'	Straight	48"	120VAC/15A	3.5 lbs
1585H10A1S	10	Yes	-	6'	Straight	48"	120VAC/15A	3.5 lbs
1585H10B1S	10	Yes	-	15'	Straight	48"	120VAC/15A	3.5 lbs
1585H15A1S	15	Yes	-	6'	Straight	48"	120VAC/15A	3.7 lbs
1585H15B1S	15	Yes	-	15'	Straight	48"	120VAC/15A	3.7 lbs
1587H11A1S	11	Yes	-	6'	Straight	70"	120VAC/15A	3.5 lbs
1587H11B1S	11	Yes	-	15'	Straight	70"	120VAC/15A	3.5 lbs
1587H19A1S	19	Yes	-	6'	Straight	70"	120VAC/15A	4.8 lbs
1587H19B1S	19	Yes	-	15'	Straight	70"	120VAC/15A	4.8 lbs
1588H12A1S	12	Yes	-	6'	Straight	77"	120VAC/15A	3.5 lbs
1588H12B1S	12	Yes	-	15'	Straight	77"	120VAC/15A	3.5 lbs
1585T8A1S	8	-	Yes	6'	Straight	48"	120VAC/15A	3.5 lbs
1585T8B1S	8	-	Yes	15'	Straight	48"	120VAC/15A	3.5 lbs
1585T10A1S	10	-	Yes	6'	Straight	48"	120VAC/15A	3.5 lbs
1585T10B1S	10	-	Yes	15'	Straight	48"	120VAC/15A	3.5 lbs
1585T15A1S	15	-	Yes	6'	Straight	48"	120VAC/15A	3.7 lbs
1585T15B1S	15	-	Yes	15'	Straight	48"	120VAC/15A	3.7 lbs
1587T11A1S	11	-	Yes	6'	Straight	70"	120VAC/15A	3.5 lbs
1587T11B1S	11	-	Yes	15'	Straight	70"	120VAC/15A	3.5 lbs
1587T19A1S	19	-	Yes	6'	Straight	70"	120VAC/15A	4.8 lbs
1587T19B1S	19	-	Yes	15'	Straight	70"	120VAC/15A	4.8 lbs
1588T12A1S	12	-	Yes	6'	Straight	77"	120VAC/15A	3.5 lbs
1588T12B1S	12	-	Yes	15'	Straight	77"	120VAC/15A	3.5 lbs

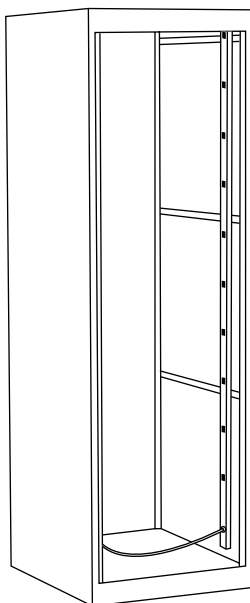


15 Amp Vertical Rack Mount

15 Amp Vertical Rack Mount Power Strips - With On/Off Switch

Part No.	Outlets	Cord Length	Plug Type	Length	Shipping Weight
15851H6A1	6	6'	Straight	18"	2.5 lbs
15851H6B1	6	15'	Straight	18"	2.5 lbs
15851H6C1	6	6'	Twist Lock	18"	2.5 lbs
15851H6D1	6	15'	Twist Lock	18"	2.5 lbs
15852H6A1	6	6'	Straight	24"	2.5 lbs
15852H6B1	6	15'	Straight	24"	2.5 lbs
15852H6C1	6	6'	Twist Lock	24"	2.5 lbs
15852H6D1	6	15'	Twist Lock	24"	2.5 lbs
15852H8A1	8	6'	Straight	24"	2.5 lbs
15852H8B1	8	15'	Straight	24"	2.5 lbs
15852H8C1	8	6'	Twist Lock	24"	2.5 lbs
15852H8D1	8	15'	Twist Lock	24"	3.5 lbs
15853H6A1	6	6'	Straight	36"	3.0 lbs
15853H6B1	6	15'	Straight	36"	3.0 lbs
15853H6C1	6	6'	Twist Lock	36"	3.0 lbs
15853H6D1	6	15'	Twist Lock	36"	3.0 lbs
15854H7A1	7	6'	Straight	42"	3.5 lbs
15854H7B1	7	15'	Straight	42"	3.5 lbs
15854H7C1	7	6'	Twist Lock	42"	3.5 lbs
15854H7D1	7	15'	Twist Lock	42"	3.5 lbs
1585H8A1	8	6'	Straight	48"	3.5 lbs
1585H8B1	8	15'	Straight	48"	3.5 lbs
1585H8C1	8	6'	Twist Lock	48"	3.5 lbs
1585H8D1	8	15'	Twist Lock	48"	3.5 lbs
1585H10A1	10	6'	Straight	48"	3.5 lbs
1585H10B1	10	15'	Straight	48"	3.5 lbs
1585H10C1	10	6'	Twist Lock	48"	3.5 lbs
1585H10D1	10	15'	Twist Lock	48"	3.5 lbs
1585H11A1	11	6'	Straight	48"	3.5 lbs
1585H11B1	11	15'	Straight	48"	3.5 lbs
1585H11C1	11	6'	Twist Lock	48"	3.5 lbs
1585H11D1	11	15'	Twist Lock	48"	3.5 lbs
1585H15A1	15	6'	Straight	48"	3.7 lbs
1585H15B1	15	15'	Straight	48"	3.7 lbs
1585H15C1	15	6'	Twist Lock	48"	3.7 lbs
1585H15D1	15	15'	Twist Lock	48"	3.7 lbs

Part No.	Outlets	Cord Length	Plug Type	Length	Shipping Weight
1585H16A1	16	6'	Straight	48"	3.7 lbs
1585H16B1	16	15'	Straight	48"	3.7 lbs
1585H16C1	16	6'	Twist Lock	48"	3.7 lbs
1585H16D1	16	15'	Twist Lock	48"	3.7 lbs
1586H10A1	10	6'	Straight	60"	3.7 lbs
1586H10B1	10	15'	Straight	60"	3.7 lbs
1586H10C1	10	6'	Twist Lock	60"	3.7 lbs
1586H10D1	10	15'	Twist Lock	60"	3.5 lbs
1586H12A1	12	6'	Straight	60"	3.7 lbs
1586H12B1	12	15'	Straight	60"	3.7 lbs
1586H12C1	12	6'	Twist Lock	60"	3.7 lbs
1586H12D1	12	15'	Twist Lock	60"	4.8 lbs
1587H10A1	10	6'	Straight	70"	4.2 lbs
1587H10B1	10	15'	Straight	70"	4.2 lbs
1587H10C1	10	6'	Twist Lock	70"	4.2 lbs
1587H10D1	10	15'	Twist Lock	70"	4.2 lbs
1587H11A1	11	6'	Straight	70"	4.2 lbs
1587H11B1	11	15'	Straight	70"	4.2 lbs
1587H11C1	11	6'	Twist Lock	70"	4.2 lbs
1587H11D1	11	15'	Twist Lock	70"	4.2 lbs
1587H12A1	12	6'	Straight	70"	4.2 lbs
1587H12B1	12	15'	Straight	70"	4.2 lbs
1587H12C1	12	6'	Twist Lock	70"	4.2 lbs
1587H12D1	12	15'	Twist Lock	70"	4.2 lbs
1587H19A1	19	6'	Straight	70"	4.8 lbs
1587H19B1	19	15'	Straight	70"	4.8 lbs
1587H19C1	19	6'	Twist Lock	70"	4.8 lbs
1587H19D1	19	15'	Twist Lock	70"	4.8 lbs
1587H24A1	24	6'	Straight	70"	4.8 lbs
1587H24B1	24	15'	Straight	70"	4.8 lbs
1587H24C1	24	6'	Twist Lock	70"	4.8 lbs
1587H24D1	24	15'	Twist Lock	70"	4.8 lbs
1588H12A1	12	6'	Straight	77"	4.8 lbs
1588H12B1	12	15'	Straight	77"	4.8 lbs
1588H12C1	12	6'	Twist Lock	77"	4.8 lbs
1588H12D1	12	15'	Twist Lock	77"	4.8 lbs



Hardware Kit: part number **1585CLIP** (included)



Hammond Manufacturing Co. Ltd.
394 Edinburgh Rd. North
Guelph, Ontario N1H 1E5 CANADA
© Phone: 519-822-2960 Fax: 519-822-0715



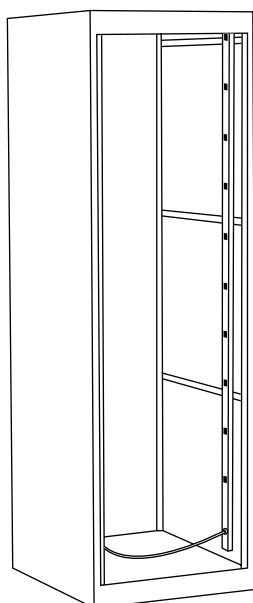
Hammond Manufacturing Co. Inc.
256 Sonwil Dr.
Cheektowaga, NY 14225 USA
Phone: 716-651-0086 Fax: 716-651-0726

15 Amp Vertical Rack Mount

15 Amp Vertical Rack Mount Power Strips - With Pilot Light

Part No.	Outlets	Cord Length	Plug Type	Length	Shipping Weight
15851T6A1	6	6'	Straight	18"	2.5 lbs
15851T6B1	6	15'	Straight	18"	2.5 lbs
15851T6C1	6	6'	Twist Lock	18"	2.5 lbs
15851T6D1	6	15'	Twist Lock	18"	2.5 lbs
15852T6A1	6	6'	Straight	24"	2.5 lbs
15852T6B1	6	15'	Straight	24"	2.5 lbs
15852T6C1	6	6'	Twist Lock	24"	2.5 lbs
15852T6D1	6	15'	Twist Lock	24"	2.5 lbs
15852T8A1	8	6'	Straight	24"	2.5 lbs
15852T8B1	8	15'	Straight	24"	2.5 lbs
15852T8C1	8	6'	Twist Lock	24"	2.5 lbs
15852T8D1	8	15'	Twist Lock	24"	3.5 lbs
15853T6A1	6	6'	Straight	36"	3.0 lbs
15853T6B1	6	15'	Straight	36"	3.0 lbs
15853T6C1	6	6'	Twist Lock	36"	3.0 lbs
15853T6D1	6	15'	Twist Lock	36"	3.0 lbs
15854T7A1	7	6'	Straight	42"	3.5 lbs
15854T7B1	7	15'	Straight	42"	3.5 lbs
15854T7C1	7	6'	Twist Lock	42"	3.5 lbs
15854T7D1	7	15'	Twist Lock	42"	3.5 lbs
1585T8A1	8	6'	Straight	48"	3.5 lbs
1585T8B1	8	15'	Straight	48"	3.5 lbs
1585T8C1	8	6'	Twist Lock	48"	3.5 lbs
1585T8D1	8	15'	Twist Lock	48"	3.5 lbs
1585T10A1	10	6'	Straight	48"	3.5 lbs
1585T10B1	10	15'	Straight	48"	3.5 lbs
1585T10C1	10	6'	Twist Lock	48"	3.5 lbs
1585T10D1	10	15'	Twist Lock	48"	3.5 lbs
1585T11A1	11	6'	Straight	48"	3.5 lbs
1585T11B1	11	15'	Straight	48"	3.5 lbs
1585T11C1	11	6'	Twist Lock	48"	3.5 lbs
1585T11D1	11	15'	Twist Lock	48"	3.5 lbs
1585T15A1	15	6'	Straight	48"	3.7 lbs
1585T15B1	15	15'	Straight	48"	3.7 lbs
1585T15C1	15	6'	Twist Lock	48"	3.7 lbs
1585T15D1	15	15'	Twist Lock	48"	3.7 lbs

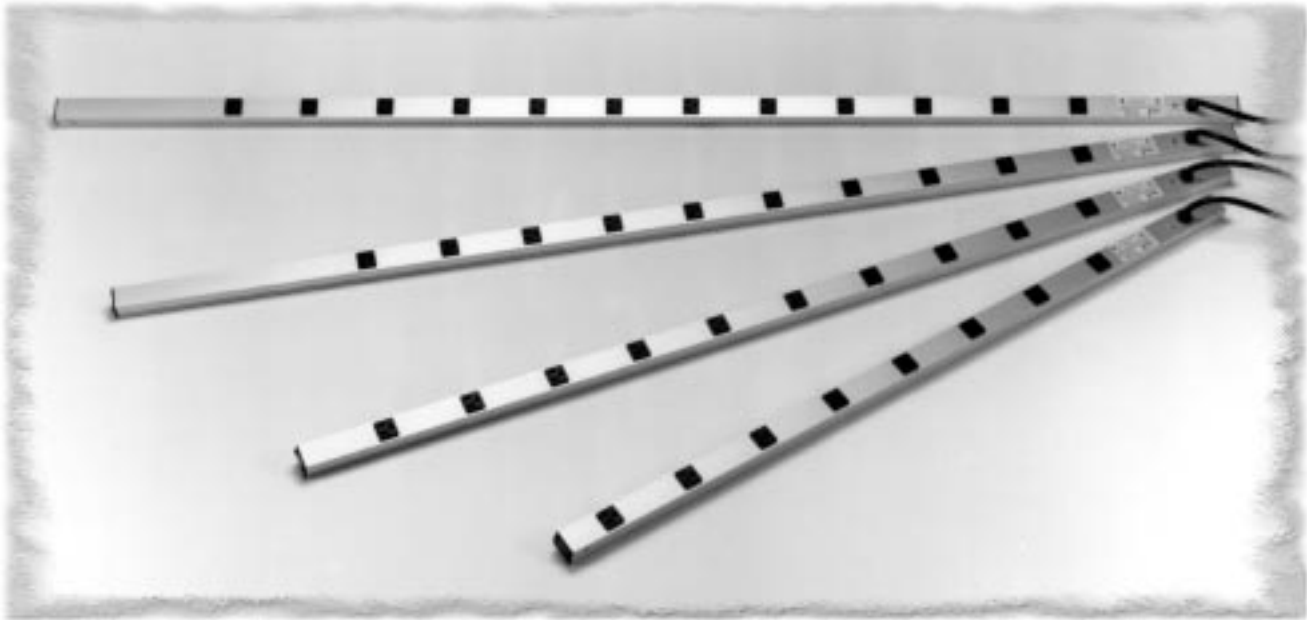
Part No.	Outlets	Cord Length	Plug Type	Length	Shipping Weight
1585T16A1	16	6'	Straight	48"	3.7 lbs
1585T16B1	16	15'	Straight	48"	3.7 lbs
1585T16C1	16	6'	Twist Lock	48"	3.7 lbs
1585T16D1	16	15'	Twist Lock	48"	3.7 lbs
1586T10A1	10	6'	Straight	60"	3.7 lbs
1586T10B1	10	15'	Straight	60"	3.7 lbs
1586T10C1	10	6'	Twist Lock	60"	3.7 lbs
1586T10D1	10	15'	Twist Lock	60"	3.5 lbs
1586T12A1	12	6'	Straight	60"	3.7 lbs
1586T12B1	12	15'	Straight	60"	3.7 lbs
1586T12C1	12	6'	Twist Lock	60"	3.7 lbs
1586T12D1	12	15'	Twist Lock	60"	4.2 lbs
1587T10A1	10	6'	Straight	70"	4.2 lbs
1587T10B1	10	15'	Straight	70"	4.2 lbs
1587T10C1	10	6'	Twist Lock	70"	4.2 lbs
1587T10D1	10	15'	Twist Lock	70"	4.2 lbs
1587T11A1	11	6'	Straight	70"	4.2 lbs
1587T11B1	11	15'	Straight	70"	4.2 lbs
1587T11C1	11	6'	Twist Lock	70"	4.2 lbs
1587T11D1	11	15'	Twist Lock	70"	4.2 lbs
1587T12A1	12	6'	Straight	70"	4.2 lbs
1587T12B1	12	15'	Straight	70"	4.2 lbs
1587T12C1	12	6'	Twist Lock	70"	4.2 lbs
1587T12D1	12	15'	Twist Lock	70"	4.2 lbs
1587T19A1	19	6'	Straight	70"	4.8 lbs
1587T19B1	19	15'	Straight	70"	4.8 lbs
1587T19C1	19	6'	Twist Lock	70"	4.8 lbs
1587T19D1	19	15'	Twist Lock	70"	4.8 lbs
1587T24A1	24	6'	Straight	70"	4.8 lbs
1587T24B1	24	15'	Straight	70"	4.8 lbs
1587T24C1	24	6'	Twist Lock	70"	4.8 lbs
1587T24D1	24	15'	Twist Lock	70"	4.8 lbs
1588T12A1	12	6'	Straight	77"	4.8 lbs
1588T12B1	12	15'	Straight	77"	4.8 lbs
1588T12C1	12	6'	Twist Lock	77"	4.8 lbs
1588T12D1	12	15'	Twist Lock	77"	4.8 lbs



Hardware Kit: part number **1585CLIP** (included)

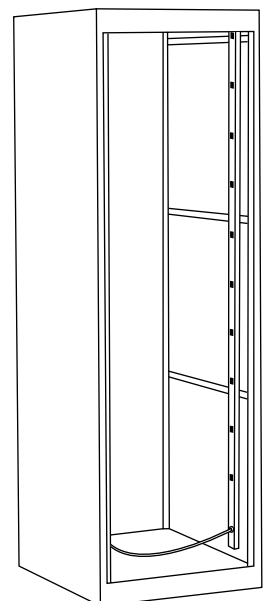


20 Amp Vertical Rack Mount



- ~ Designed for power distribution for equipment racks – also handy for work benches.
- ~ Designed for applications with heavy current draw.
- ~ Rugged extruded aluminum case with 1 5/8" x 1 3/8" profile.
- ~ Receptacles are 1" square and are equally spaced over the length of the power strip
- ~ Integral molded plug available in straight blade (Nema 5-20P) or twist-lock (Nema L5-20P) configurations (see table).
- ~ Available with on/off switch or red pilot light to indicate power on (see table).
- ~ Electrical rating of 120VAC/20A
- ~ 20A outlets with 20A circuit breaker, 12 gauge wire - 12/3 SJTW 20A heavy duty power cord for extreme temperature ranges
- ~ Includes hardware for mounting to rack Amhal struts or relay rack sides
- ~ For additional hardware kit, order part number **1585CLIP**
- ~ **NOTE:** To properly use in racks, allow sufficient depth **BEHIND** the rear panel rails for vertical mounting to amhul struts.
- ~ CSA certified.
- ~ UL listed.

Hardware Kit: part number **1585CLIP** (included)



Hammond Manufacturing Co. Ltd.
394 Edinburgh Rd. North
Guelph, Ontario N1H 1E5 CANADA
© Phone: 519-822-2960 Fax: 519-822-0715

www.hammondmfg.com

Hammond Manufacturing Co. Inc.
256 Sonwil Dr.
Cheektowaga, NY 14225 USA
Phone: 716-651-0086 Fax: 716-651-0726

20 Amp Vertical Rack Mount

20 Amp Vertical Rack Mount Power Strips - With On/Off Switch

Part No.	Outlets	Cord Length	Plug Type	Length	Shipping Weight
1589H18C1	6	6'	Twist Lock	18"	2.7 lbs
1589H18D1	6	15'	Twist Lock	18"	2.7 lbs
1589H18F1	6	6'	Straight	18"	2.5 lbs
1589H18G1	6	15'	Straight	18"	3.0 lbs
1589H24C1	8	6'	Twist Lock	24"	2.7 lbs
1589H24D1	8	15'	Twist Lock	24"	2.7 lbs
1589H24F1	8	6'	Straight	24"	2.5 lbs
1589H24G1	8	15'	Straight	24"	3.0 lbs
1589H36C1	6	6'	Twist Lock	36"	3.2 lbs
1589H36D1	6	15'	Twist Lock	36"	3.2 lbs
1589H36F1	6	6'	Straight	36"	3.0 lbs
1589H36G1	6	15'	Straight	36"	3.5 lbs
1589H42C1	7	6'	Twist Lock	42"	3.7 lbs
1589H42D1	7	15'	Twist Lock	42"	3.7 lbs
1589H42F1	7	6'	Straight	42"	3.5 lbs
1589H42G1	7	15'	Straight	42"	4.0 lbs
1589H48C1	8	6'	Twist Lock	48"	3.7 lbs
1589H48D1	8	15'	Twist Lock	48"	3.7 lbs
1589H48F1	8	6'	Straight	48"	3.5 lbs
1589H48G1	8	15'	Straight	48"	4.0 lbs
1589H48C116	16	6'	Twist Lock	48"	3.9 lbs
1589H48D116	16	15'	Twist Lock	48"	3.9 lbs
1589H48F116	16	6'	Straight	48"	3.7 lbs
1589H48G116	16	15'	Straight	48"	4.2 lbs
1589H60C1	10	6'	Twist Lock	60"	3.7 lbs
1589H60D1	10	15'	Twist Lock	60"	3.7 lbs
1589H60F1	10	6'	Straight	60"	3.5 lbs
1589H60G1	10	15'	Straight	60"	4.0 lbs
1589H70C1	10	6'	Twist Lock	70"	4.2 lbs
1589H70D1	10	15'	Twist Lock	70"	4.2 lbs
1589H70F1	10	6'	Straight	70"	4.0 lbs
1589H70G1	10	15'	Straight	70"	4.5 lbs
1589H70C124	24	6'	Twist Lock	70"	4.4 lbs
1589H70D124	24	15'	Twist Lock	70"	4.4 lbs
1589H70F124	24	6'	Straight	70"	4.2 lbs
1589H70G124	24	15'	Straight	70"	4.7 lbs
1589H77C1	12	6'	Twist Lock	77"	4.8 lbs
1589H77D1	12	15'	Twist Lock	77"	4.8 lbs
1589H77F1	12	6'	Straight	77"	4.6 lbs
1589H77G1	12	15'	Straight	77"	5.1 lbs

20 Amp Vertical Rack Mount Power Strips - With Pilot Light

Part No.	Outlets	Cord Length	Plug Type	Length	Shipping Weight
1589T18C1	6	6'	Twist Lock	18"	2.7 lbs
1589T18D1	6	15'	Twist Lock	18"	2.7 lbs
1589T18F1	6	6'	Straight	18"	2.5 lbs
1589T18G1	6	15'	Straight	18"	3.0 lbs
1589T24C1	8	6'	Twist Lock	24"	2.7 lbs
1589T24D1	8	15'	Twist Lock	24"	2.7 lbs
1589T24F1	8	6'	Straight	24"	2.5 lbs
1589T24G1	8	15'	Straight	24"	3.0 lbs
1589T36C1	6	6'	Twist Lock	36"	3.2 lbs
1589T36D1	6	15'	Twist Lock	36"	3.2 lbs
1589T36F1	6	6'	Straight	36"	3.0 lbs
1589T36G1	6	15'	Straight	36"	3.5 lbs
1589T42C1	7	6'	Twist Lock	42"	3.7 lbs
1589T42D1	7	15'	Twist Lock	42"	3.7 lbs
1589T42F1	7	6'	Straight	42"	3.5 lbs
1589T42G1	7	15'	Straight	42"	4.0 lbs
1589T48C1	8	6'	Twist Lock	48"	3.7 lbs
1589T48D1	8	15'	Twist Lock	48"	3.7 lbs
1589T48F1	8	6'	Straight	48"	3.5 lbs
1589T48G1	8	15'	Straight	48"	4.0 lbs
1589T48C116	16	6'	Twist Lock	48"	3.9 lbs
1589T48D116	16	15'	Twist Lock	48"	3.9 lbs
1589T48F116	16	6'	Straight	48"	3.7 lbs
1589T48G116	16	15'	Straight	48"	4.2 lbs
1589T60C1	10	6'	Twist Lock	60"	3.7 lbs
1589T60D1	10	15'	Twist Lock	60"	3.7 lbs
1589T60F1	10	6'	Straight	60"	3.5 lbs
1589T60G1	10	15'	Straight	60"	4.0 lbs
1589T70C1	10	6'	Twist Lock	70"	4.2 lbs
1589T70D1	10	15'	Twist Lock	70"	4.2 lbs
1589T70F1	10	6'	Straight	70"	4.0 lbs
1589T70G1	10	15'	Straight	70"	4.5 lbs
1589T70C124	24	6'	Twist Lock	70"	4.4 lbs
1589T70D124	24	15'	Twist Lock	70"	4.4 lbs
1589T70F124	24	6'	Straight	70"	4.2 lbs
1589T70G124	24	15'	Straight	70"	4.7 lbs
1589T77C1	12	6'	Twist Lock	77"	4.8 lbs
1589T77D1	12	15'	Twist Lock	77"	4.8 lbs
1589T77F1	12	6'	Straight	77"	4.6 lbs
1589T77G1	12	15'	Straight	77"	5.1 lbs

15 Amp Rack Mount Power Panels



- ~ Designed for power distribution from front and rear of unit.
- ~ Tough steel case painted in black powder coat finish.
- ~ Heavy-duty 14 gauge wire power cord – 14/3 SJTW for extreme temperature ranges.
- ~ Integral molded plug available in straight blade (Nema 5-15P) or twist-lock (Nema L5-15P) configurations.
- ~ Available with lighted on/off switch or red pilot light to indicate power on.
- ~ Includes 15A, 125VAC circuit breaker to prevent accidental line overload.
- ~ CSA certified.
- ~ UL recognized - under the component program of UL.



15 Amp Rack Mount (Front & Rear Receptacles)

Part No.	Total Outlets	Front Outlets	Rear Outlets	On-Off Switch	Pilot Light	Cord Length	Cord Type	Dimensions (Inches) L x W x H	Electrical Rating	Shipping Weight
1583H6A1BKX	6	2	4	Yes	-	6'	Straight	19 x 3 x 1.75	120VAC/15A	4 lbs
1583H6B1BKX	6	2	4	Yes	-	15'	Straight	19 x 3 x 1.75	120VAC/15A	4 lbs
1583H6C1BKX	6	2	4	Yes	-	6'	Twist Lock	19 x 3 x 1.75	120VAC/15A	4 lbs
1583H6D1BKX	6	2	4	Yes	-	15'	Twist Lock	19 x 3 x 1.75	120VAC/15A	4 lbs
1583T6A1BKX	6	2	4	-	Yes	6'	Straight	19 x 3 x 1.75	120VAC/15A	4 lbs
1583T6B1BKX	6	2	4	-	Yes	15'	Straight	19 x 3 x 1.75	120VAC/15A	4 lbs
1583T6C1BKX	6	2	4	-	Yes	6'	Twist Lock	19 x 3 x 1.75	120VAC/15A	4 lbs
1583T6D1BKX	6	2	4	-	Yes	15'	Twist Lock	19 x 3 x 1.75	120VAC/15A	4 lbs
1583H12A1BKX	12	6	6	Yes	-	6'	Straight	19 x 3 x 1.75	120VAC/15A	4 lbs
1583H12B1BKX	12	6	6	Yes	-	15'	Straight	19 x 3 x 1.75	120VAC/15A	4 lbs
1583H12C1BKX	12	6	6	Yes	-	6'	Twist Lock	19 x 3 x 1.75	120VAC/15A	4 lbs
1583H12D1BKX	12	6	6	Yes	-	15'	Twist Lock	19 x 3 x 1.75	120VAC/15A	4 lbs
1583T12A1BKX	12	6	6	-	Yes	6'	Straight	19 x 3 x 1.75	120VAC/15A	4 lbs
1583T12B1BKX	12	6	6	-	Yes	15'	Straight	19 x 3 x 1.75	120VAC/15A	4 lbs
1583T12C1BKX	12	6	6	-	Yes	6'	Twist Lock	19 x 3 x 1.75	120VAC/15A	4 lbs
1583T12D1BKX	12	6	6	-	Yes	15'	Twist Lock	19 x 3 x 1.75	120VAC/15A	4 lbs



Hammond Manufacturing Co. Ltd.
394 Edinburgh Rd. North
Guelph, Ontario N1H 1E5 CANADA
© Phone: 519-822-2960 Fax: 519-822-0715

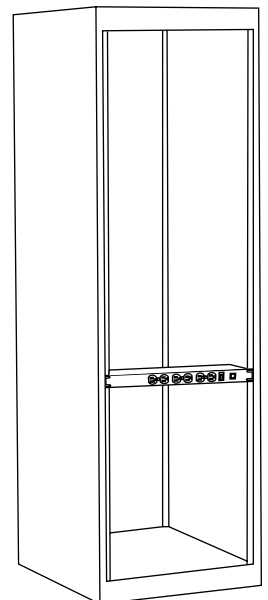


Hammond Manufacturing Co. Inc.
256 Sonwil Dr.
Cheektowaga, NY 14225 USA
Phone: 716-651-0086 Fax: 716-651-0726

15 Amp Rack Mount Power Panels



- ~ Designed for power distribution from front of unit.
- ~ Tough steel case available in ASA 61 grey or black powder coat finish.
- ~ Heavy-duty 14 gauge wire power cord – 14/3 SJTW for extreme temperature ranges.
- ~ Integral molded plug available in straight blade (Nema 5-15P) or twist-lock (Nema L5-15P) configurations.
- ~ 6 outlet models include 2 outlets with extra space for clearance of most plug in transformers.
- ~ Available with lighted on/off switch or red pilot light to indicate power on.
- ~ Includes 15A, 125VAC circuit breaker to prevent accidental line overload.
- ~ Panel dimensions are 1.75" high (1U) and 19" rack width.
- ~ CSA certified.
- ~ UL recognized - under the component program of UL.
- ~ For surge protected panels incorporating our ZT206 module:
 - 8,000 Amp rated MOV's, two ferrite rod inductors & filter capacitor provide surge suppression and EMI/RFI noise protection
 - Maximum 24,000 Amps transient current
 - 330V UL 1449 rating
 - Response time of less than 1 nanosecond
 - Protection in all 3 AC modes
 - Voltage suppression at the outlet guards against transients from equipment on the power bar



15 Amp Rack Mount Power Panels

15 Amp Rack Mount Power Panels (Front Receptacles)

Part No.	Outlets	On-Off Switch	Pilot Light	Cord Length	Plug Type	Color	Dimensions (Inches) L x W x H	Electrical Rating	Shipping Weight
1582H6A1	6	Yes	-	6'	Straight	Grey	19 x 3 x 1.75	120VAC / 15A	4 lbs
1582H6A1BK	6	Yes	-	6'	Straight	Black	19 x 3 x 1.75	120VAC / 15A	4 lbs
1582H6B1	6	Yes	-	15'	Straight	Grey	19 x 3 x 1.75	120VAC / 15A	4 lbs
1582H6B1BK	6	Yes	-	15'	Straight	Black	19 x 3 x 1.75	120VAC / 15A	4 lbs
1582H6C1	6	Yes	-	6'	Twist Lock	Grey	19 x 3 x 1.75	120VAC / 15A	4 lbs
1582H6C1BK	6	Yes	-	6'	Twist Lock	Black	19 x 3 x 1.75	120VAC / 15A	4 lbs
1582H6D1	6	Yes	-	15'	Twist Lock	Grey	19 x 3 x 1.75	120VAC / 15A	4 lbs.
1582H6D1BK	6	Yes	-	15'	Twist Lock	Black	19 x 3 x 1.75	120VAC / 15A	4 lbs.
1582H8A1	8	Yes	-	6'	Straight	Grey	19 x 3 x 1.75	120VAC / 15A	4 lbs
1582H8A1BK	8	Yes	-	6'	Straight	Black	19 x 3 x 1.75	120VAC / 15A	4 lbs
1582H8B1	8	Yes	-	15'	Straight	Grey	19 x 3 x 1.75	120VAC / 15A	4 lbs
1582H8B1BK	8	Yes	-	15'	Straight	Black	19 x 3 x 1.75	120VAC / 15A	4 lbs
1582H8C1	8	Yes	-	6'	Twist Lock	Grey	19 x 3 x 1.75	120VAC / 15A	4 lbs
1582H8C1BK	8	Yes	-	6'	Twist Lock	Black	19 x 3 x 1.75	120VAC / 15A	4 lbs
1582H8D1	8	Yes	-	15'	Twist Lock	Grey	19 x 3 x 1.75	120VAC / 15A	4 lbs.
1582H8D1BK	8	Yes	-	15'	Twist Lock	Black	19 x 3 x 1.75	120VAC / 15A	4 lbs.
1582T6A1	6	-	Yes	6'	Straight	Grey	19 x 3 x 1.75	120VAC / 15A	4 lbs
1582T6A1BK	6	-	Yes	6'	Straight	Black	19 x 3 x 1.75	120VAC / 15A	4 lbs
1582T6B1	6	-	Yes	15'	Straight	Grey	19 x 3 x 1.75	120VAC / 15A	4 lbs
1582T6B1BK	6	-	Yes	15'	Straight	Black	19 x 3 x 1.75	120VAC / 15A	4 lbs
1582T6C1	6	-	Yes	6'	Twist Lock	Grey	19 x 3 x 1.75	120VAC / 15A	4 lbs
1582T6C1BK	6	-	Yes	6'	Twist Lock	Black	19 x 3 x 1.75	120VAC / 15A	4 lbs
1582T6D1	6	-	Yes	15'	Twist Lock	Grey	19 x 3 x 1.75	120VAC / 15A	4 lbs.
1582T6D1BK	6	-	Yes	15'	Twist Lock	Black	19 x 3 x 1.75	120VAC / 15A	4 lbs.
1582T8A1	8	-	Yes	6'	Straight	Grey	19 x 3 x 1.75	120VAC / 15A	4 lbs
1582T8A1BK	8	-	Yes	6'	Straight	Black	19 x 3 x 1.75	120VAC / 15A	4 lbs
1582T8B1	8	-	Yes	15'	Straight	Grey	19 x 3 x 1.75	120VAC / 15A	4 lbs
1582T8B1BK	8	-	Yes	15'	Straight	Black	19 x 3 x 1.75	120VAC / 15A	4 lbs
1582T8C1	8	-	Yes	6'	Twist Lock	Grey	19 x 3 x 1.75	120VAC / 15A	4 lbs
1582T8C1BK	8	-	Yes	6'	Twist Lock	Black	19 x 3 x 1.75	120VAC / 15A	4 lbs
1582T8D1	8	-	Yes	15'	Twist Lock	Grey	19 x 3 x 1.75	120VAC / 15A	4 lbs
1582T8D1BK	8	-	Yes	15'	Twist Lock	Black	19 x 3 x 1.75	120VAC / 15A	4 lbs

15 Amp Rack Mount Power Panels (Front Receptacles) With Surge Protection

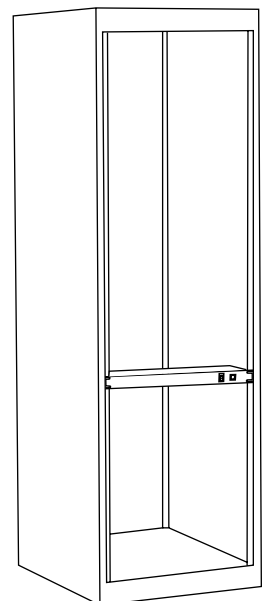
Part No.	Outlets	On-Off Switch	Pilot Light	Cord Length	Plug Type	Color	Dimensions (Inches) L x W x H	Electrical Rating	Shipping Weight
1582H6A1S	6	Yes	-	6'	Straight	Grey	19 x 3 x 1.75	120VAC /15A	4 lbs
1582H6A1SBK	6	Yes	-	6'	Straight	Black	19 x 3 x 1.75	120VAC /15A	4 lbs
1582H6B1S	6	Yes	-	15'	Straight	Grey	19 x 3 x 1.75	120VAC /15A	4 lbs
1582H6B1SBK	6	Yes	-	15'	Straight	Black	19 x 3 x 1.75	120VAC /15A	4 lbs
1582H6C1S	6	Yes	-	6'	Twist Lock	Grey	19 x 3 x 1.75	120VAC /15A	4 lbs
1582H6C1SBK	6	Yes	-	6'	Twist Lock	Black	19 x 3 x 1.75	120VAC /15A	4 lbs
1582H6D1S	6	Yes	-	15'	Twist Lock	Grey	19 x 3 x 1.75	120VAC /15A	4 lbs
1582H6D1SBK	6	Yes	-	15'	Twist Lock	Black	19 x 3 x 1.75	120VAC /15A	4 lbs



15 Amp Rack Mount Power Panels



- ~ Designed for power distribution from rear of unit.
- ~ Tough steel case available in ASA 61 grey or black powder coat finish.
- ~ Heavy-duty 14 gauge wire power cord – 14/3 SJTW for extreme temperature ranges.
- ~ Integral molded plug available in straight blade (Nema 5-15P) or twist-lock (Nema L5-15P) configurations.
- ~ 6 outlet models include 2 outlets with extra space for clearance of most plug in transformers.
- ~ Available with lighted on/off switch or red pilot light to indicate power on.
- ~ Includes 15A, 125VAC circuit breaker to prevent accidental line overload.
- ~ Panel dimensions are 1.75" high (1U) and 19" width.
- ~ CSA certified.
- ~ UL recognized - under the component program of UL.
- ~ For surge protected panels incorporating our ZT206 module:
 - 8,000 Amp rated MOV's, two ferrite rod inductors & filter capacitor provide surge suppression and EMI/RFI noise protection
 - Maximum 24,000 Amps transient current
 - 330V UL 1449 rating
 - Response time of less than 1 nanosecond
 - Protection in all 3 AC modes
 - Voltage suppression at the outlet guards against transients from equipment on the power bar



15 Amp Rack Mount Power Panels

15 Amp Rack Mount Power Panels (Rear Receptacles)

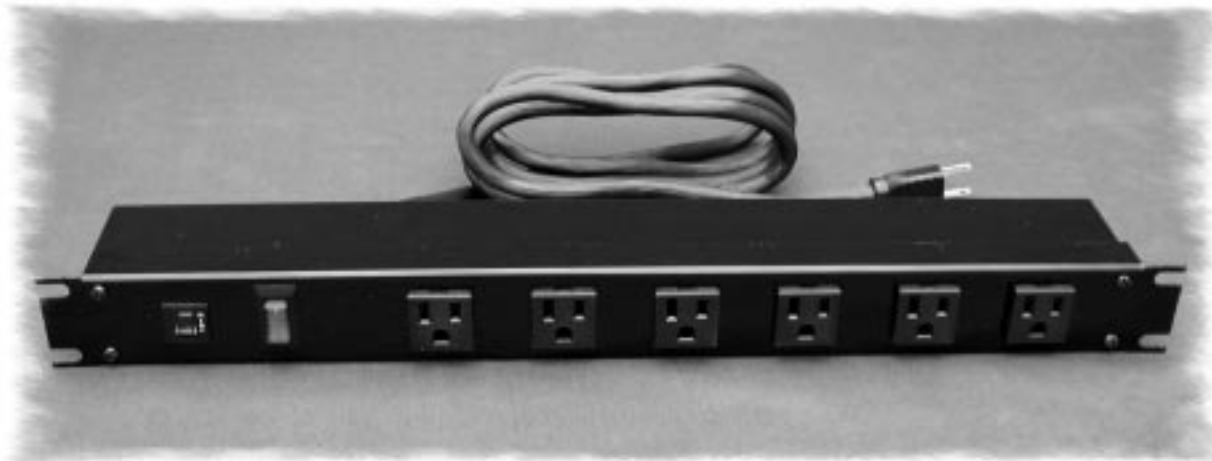
Part No.	Outlets	On-Off Switch	Pilot Light	Cord Length	Plug Type	Color	Dimensions (Inches) L x W x H	Electrical Rating	Shipping Weight
1583H6A1	6	Yes	-	6'	Straight	Grey	19 x 3 x 1.75	120VAC /15A	4 lbs
1583H6A1BK	6	Yes	-	6'	Straight	Black	19 x 3 x 1.75	120VAC /15A	4 lbs
1583H6B1	6	Yes	-	15'	Straight	Grey	19 x 3 x 1.75	120VAC /15A	4 lbs
1583H6B1BK	6	Yes	-	15'	Straight	Black	19 x 3 x 1.75	120VAC /15A	4 lbs
1583H6C1	6	Yes	-	6'	Twist Lock	Grey	19 x 3 x 1.75	120VAC /15A	4 lbs
1583H6C1BK	6	Yes	-	6'	Twist Lock	Black	19 x 3 x 1.75	120VAC /15A	4 lbs
1583H6D1	6	Yes	-	15'	Twist Lock	Grey	19 x 3 x 1.75	120VAC/15A	4 lbs
1583H6D1BK	6	Yes	-	15'	Twist Lock	Black	19 x 3 x 1.75	120 VAC/15A	4 lbs
1583H8A1	8	Yes	-	6'	Straight	Grey	19 x 3 x 1.75	120VAC /15A	4 lbs
1583H8A1BK	8	Yes	-	6'	Straight	Black	19 x 3 x 1.75	120VAC /15A	4 lbs
1583H8B1	8	Yes	-	15'	Straight	Grey	19 x 3 x 1.75	120VAC /15A	4 lbs
1583H8B1BK	8	Yes	-	15'	Straight	Black	19 x 3 x 1.75	120VAC /15A	4 lbs
1583H8C1	8	Yes	-	6'	Twist Lock	Grey	19 x 3 x 1.75	120VAC /15A	4 lbs
1583H8C1BK	8	Yes	-	6'	Twist Lock	Black	19 x 3 x 1.75	120VAC /15A	4 lbs
1583H8D1	8	Yes	-	15'	Twist Lock	Grey	19 x 3 x 1.75	120VAC /15A	4 lbs
1583H8D1BK	8	Yes	-	15'	Twist Lock	Black	19 x 3 x 1.75	120VAC /15A	4 lbs
1583T6A1	6	-	Yes	6'	Straight	Grey	19 x 3 x 1.75	120VAC /15A	4 lbs
1583T6A1BK	6	-	Yes	6'	Straight	Black	19 x 3 x 1.75	120VAC /15A	4 lbs
1583T6B1	6	-	Yes	15'	Straight	Grey	19 x 3 x 1.75	120VAC /15A	4 lbs
1583T6B1BK	6	-	Yes	15'	Straight	Black	19 x 3 x 1.75	120VAC /15A	4 lbs
1583T6C1	6	-	Yes	6'	Twist Lock	Grey	19 x 3 x 1.75	120VAC /15A	4 lbs
1583T6C1BK	6	-	Yes	6'	Twist Lock	Black	19 x 3 x 1.75	120VAC /15A	4 lbs
1583T6D1	6	-	Yes	15'	Twist Lock	Grey	19 x 3 x 1.75	120VAC /15A	4 lbs
1583T6D1BK	6	-	Yes	15'	Twist Lock	Black	19 x 3 x 1.75	120VAC /15A	4 lbs
1583T8A1	8	-	Yes	6'	Straight	Grey	19 x 3 x 1.75	120VAC /15A	4 lbs
1583T8A1BK	8	-	Yes	6'	Straight	Black	19 x 3 x 1.75	120VAC /15A	4 lbs
1583T8B1	8	-	Yes	15'	Straight	Grey	19 x 3 x 1.75	120VAC /15A	4 lbs
1583T8B1BK	8	-	Yes	15'	Straight	Black	19 x 3 x 1.75	120VAC /15A	4 lbs
1583T8C1	8	-	Yes	6'	Twist Lock	Grey	19 x 3 x 1.75	120VAC /15A	4 lbs
1583T8C1BK	8	-	Yes	6'	Twist Lock	Black	19 x 3 x 1.75	120VAC /15A	4 lbs
1583T8D1	8	-	Yes	15'	Twist Lock	Grey	19 x 3 x 1.75	120VAC /15A	4 lbs
1583T8D1BK	8	-	Yes	15'	Twist Lock	Black	19 x 3 x 1.75	120VAC /15A	4 lbs

15 Amp Rack Mount Power Panels (Rear Receptacles) With Surge Protection

Part No.	Outlets	On-Off Switch	Pilot Light	Cord Length	Plug Type	Color	Dimensions (Inches) L x W x H	Electrical Rating	Shipping Weight
1583H6A1S	6	Yes	-	6'	Straight	Grey	19 x 3 x 1.75	120VAC /15A	4 lbs
1583H6A1SBK	6	Yes	-	6'	Straight	Black	19 x 3 x 1.75	120VAC /15A	4 lbs
1583H6B1S	6	Yes	-	15'	Straight	Grey	19 x 3 x 1.75	120VAC /15A	4 lbs
1583H6B1SBK	6	Yes	-	15'	Straight	Black	19 x 3 x 1.75	120VAC /15A	4 lbs
1583H6C1S	6	Yes	-	6'	Twist Lock	Grey	19 x 3 x 1.75	120VAC /15A	4 lbs
1583H6C1SBK	6	Yes	-	6'	Twist Lock	Black	19 x 3 x 1.75	120VAC /15A	4 lbs
1583H6D1S	6	Yes	-	15'	Twist Lock	Grey	19 x 3 x 1.75	120VAC /15A	4 lbs
1583H6D1SBK	6	Yes	-	15'	Twist Lock	Black	19 x 3 x 1.75	120VAC /15A	4 lbs



15 Amp - 90° Version



- ~ Receptacles turned 90°
- ~ Designed for power distribution from front or rear of unit.
- ~ Tough steel case available in a black powder coat finish.
- ~ Heavy-duty power cord – 14/3 SJTW for extreme temperature ranges.
- ~ Integral molded straight-blade (NEMA 5-15P) or twist lock (NEMA L5-15P) configuration.
- ~ Available with lighted on/off switch or red pilot light to indicate power on.
- ~ Includes 15A, 125VAC circuit breaker to prevent accidental line overload.
- ~ CSA certified.
- ~ UL recognized - under the component program of UL.



15 Amp Rack Mount Power Panels with 90° Receptacles

Part No.	Outlets	Outlet Location	On-Off Switch	Pilot Light	Plug Type	Cord Length	Dimensions (Inches) LxWxH	Electrical Rating	Shipping Weight
1582H6A1BKRA	6	Front	Yes	-	Straight	6'	19 x 3 x 1.75	120VAC/15A	4 lbs
1582H6B1BKRA	6	Front	Yes	-	Straight	15'	19 x 3 x 1.75	120VAC/15A	4 lbs
1582H6C1BKRA	6	Front	Yes	-	Twist Lock	6'	19 x 3 x 1.75	120VAC/15A	4 lbs
1582H6D1BKRA	6	Front	Yes	-	Twist Lock	15'	19 x 3 x 1.75	120VAC/15A	4 lbs
1582T6A1BKRA	6	Front	-	Yes	Straight	6'	19 x 3 x 1.75	120VAC/15A	4 lbs
1582T6B1BKRA	6	Front	-	Yes	Straight	15'	19 x 3 x 1.75	120VAC/15A	4 lbs
1582T6C1BKRA	6	Front	-	Yes	Twist Lock	6'	19 x 3 x 1.75	120VAC/15A	4 lbs
1582T6D1BKRA	6	Front	-	Yes	Twist Lock	15'	19 x 3 x 1.75	120VAC/15A	4 lbs
1583H6A1BKRA	6	Rear	Yes	-	Straight	6'	19 x 3 x 1.75	120VAC/15A	4 lbs
1583H6B1BKRA	6	Rear	Yes	-	Straight	15'	19 x 3 x 1.75	120VAC/15A	4 lbs
1583H6C1BKRA	6	Rear	Yes	-	Twist Lock	6'	19 x 3 x 1.75	120VAC/15A	4 lbs
1583H6D1BKRA	6	Rear	Yes	-	Twist Lock	15'	19 x 3 x 1.75	120VAC/15A	4 lbs
1583T6A1BKRA	6	Rear	-	Yes	Straight	6'	19 x 3 x 1.75	120VAC/15A	4 lbs
1583T6B1BKRA	6	Rear	-	Yes	Straight	15'	19 x 3 x 1.75	120VAC/15A	4 lbs
1583T6C1BKRA	6	Rear	-	Yes	Twist Lock	6'	19 x 3 x 1.75	120VAC/15A	4 lbs
1583T6D1BKRA	6	Rear	-	Yes	Twist Lock	15'	19 x 3 x 1.75	120VAC/15A	4 lbs

20 Amp Rack Mount Power Panels

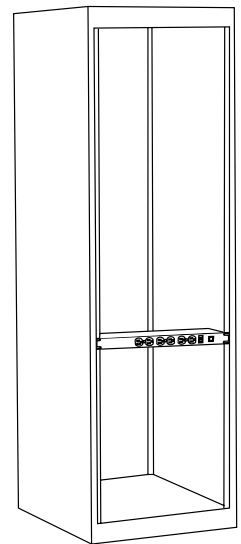


- ~ Designed for power distribution from front or rear of unit.
- ~ Tough steel case painted in black powder coat finish.
- ~ Heavy-duty power cord – 12/3 SJTW for extreme temperature ranges.
- ~ Integral molded plug available in straight blade (Nema 5-20P) or twist-lock (Nema L5-20P) configurations.
- ~ Available with on/off switch or red pilot light to indicate power on.
- ~ Includes 20A, 125VAC circuit breaker to prevent accidental line overload.
- ~ CSA certified.
- ~ UL recognized - under the component program of UL.



20 Amp Rack Mount (Front Receptacles)

Part No.	Outlets	On-Off Switch	Pilot Light	Cord Length	Plug Type	Dimensions (Inches)	Electrical Rating	Shipping Weight
1589H6C1BKRF	6	Yes	-	6'	Twist Lock	19 x 3 x 1.75	120VAC/20A	4.2 lbs
1589H6D1BKRF	6	Yes	-	15'	Twist Lock	19 x 3 x 1.75	120VAC/20A	4.5 lbs
1589H6F1BKRF	6	Yes	-	6'	Straight	19 x 3 x 1.75	120VAC/20A	4.0 lbs
1589H6G1BKRF	6	Yes	-	15'	Straight	19 x 3 x 1.75	120VAC/20A	4.5 lbs
1589T6C1BKRF	6	-	Yes	6'	Twist Lock	19 x 3 x 1.75	120VAC/20A	4.2 lbs
1589T6D1BKRF	6	-	Yes	15'	Twist Lock	19 x 3 x 1.75	120VAC/20A	4.5 lbs
1589T6F1BKRF	6	-	Yes	6'	Straight	19 x 3 x 1.75	120VAC/20A	4.0 lbs
1589T6G1BKRF	6	-	Yes	15'	Straight	19 x 3 x 1.75	120VAC/20A	4.5 lbs



20 Amp Rack Mount (Rear Receptacles)

Part No.	Outlets	On-Off Switch	Pilot Light	Cord Length	Plug Type	Dimensions (Inches)	Electrical Rating	Shipping Weight
1589H6C1BKRR	6	Yes	-	6'	Twist Lock	19 x 3 x 1.75	120VAC/20A	4.2 lbs
1589H6D1BKRR	6	Yes	-	15'	Twist Lock	19 x 3 x 1.75	120VAC/20A	4.5 lbs
1589H6F1BKRR	6	Yes	-	6'	Straight	19 x 3 x 1.75	120VAC/20A	4.0 lbs
1589H6G1BKRR	6	Yes	-	15'	Straight	19 x 3 x 1.75	120VAC/20A	4.5 lbs
1589T6C1BKRR	6	-	Yes	6'	Twist Lock	19 x 3 x 1.75	120VAC/20A	4.2 lbs
1589T6D1BKRR	6	-	Yes	15'	Twist Lock	19 x 3 x 1.75	120VAC/20A	4.5 lbs
1589T6F1BKRR	6	-	Yes	6'	Straight	19 x 3 x 1.75	120VAC/20A	4.0 lbs
1589T6G1BKRR	6	-	Yes	15'	Straight	19 x 3 x 1.75	120VAC/20A	4.5 lbs



Hammond Manufacturing Co. Ltd.
394 Edinburgh Rd. North
Guelph, Ontario N1H 1E5 CANADA
© Phone: 519-822-2960 Fax: 519-822-0715



Hammond Manufacturing Co. Inc.
256 Sonwil Dr.
Cheektowaga, NY 14225 USA
Phone: 716-651-0086 Fax: 716-651-0726

15 Amp Power Block



- ~ Designed for power distribution in a compact area
- ~ Available with a single on/off switch, no switch or individually switched receptacles (see tables)
- ~ Heavy duty 14 gauge wire cord - 14/3 SJTW for extreme temperature ranges and integral molded plug
- ~ Plug type available is NEMA 5-15P straight blade
- ~ Includes 15 Amp, 125 VAC circuit breaker to prevent accidental overload
- ~ CSA certified
- ~ UL pending



15 Amp Power Block

Part No.	Outlets	On-Off Switch	Pilot Light	Cord Length	Plug Type	Length	Electrical Rating	Shipping Weight
1580H10A1	10	Yes	-	6'	Straight	10.5"	120VAC/15A	2.5 lbs
1580H10B1	10	Yes	-	15'	Straight	10.5"	120VAC/15A	2.5 lbs
1580T10A1	10	-	Yes	6'	Straight	10.5"	120VAC/15A	2.5 lbs
1580T10B1	10	-	Yes	15'	Straight	10.5"	120VAC/15A	2.5 lbs

15 Amp Power Block (Individually Switched)

Part No.	Outlets	On-Off Switch	Pilot Light	Cord Length	Plug Type	Length	Electrical Rating	Shipping Weight
1580H7A1X	7	Yes (7)	-	6'	Straight	13.5"	120VAC/15A	3.0 lbs
1580H7B1X	7	Yes (7)	-	15'	Straight	13.5"	120VAC/15A	3.0 lbs



ZT2001

Designed to be our highest level of surge protection

- ~ Five stages of protection.
- ~ Protection in all three AC modes and diagnostic monitoring with 3 LEDs.
- ~ Red LED fault indicator identifying power outlet problems of open or poor grounding, line neutral reversal, excessive ground to neutral.
- ~ Long-life superior telco-protection circuit on the ZT2001 series. Single line circuit featuring delta protection with three long-life semiconductor suppressors. Components FCC part 68 rated to 175 amps clamping at 145V, crowbar at 180V and fused to isolate sustained faults.
- ~ Heavy 14 gauge 6' wire cord.
- ~ 14/3 SJTW cord for extreme temperature ranges and integral molded plug.
- ~ Rugged aluminum housing, 15 amp resettable breaker, 6 AC receptacles, lighted on/off switch.
- ~ ***Self-healing gas discharge protection rated at a minimum of 2,000 joules! Crowbar primary protection to 30,000 amps for sustained faults.***
- ~ 24,000 amps maximum transient current.
- ~ 330V UL 1449 rating.
- ~ Response time of less than 1 nanosecond.
- ~ Voltage suppression at the outlet guards against transients from equipment on the power bar.

Part No.	Outlets	Joules	Crowbar Protection	EMI/RFI Min. Noise Attenuation	Differential & Common Mode Filtering	Diagnostic LED's	Telephone Protection	Electrical Rating	Shipping Weight
ZT1001-4	4	2000	Yes	80 db	Yes	Yes	-	120VAC/15A	5.0 lbs
ZT1001-6	6	2000	Yes	80 db	Yes	Yes	-	120VAC/15A	5.0 lbs
ZT1001-8	8	2000	Yes	80 db	Yes	Yes	-	120VAC/15A	5.2 lbs
ZT2001-4	4	2000	Yes	80 db	Yes	Yes	Yes	120VAC/15A	5.0 lbs
ZT2001-6	6	2000	Yes	80 db	Yes	Yes	Yes	120VAC/15A	5.0 lbs
ZT2001-8	8	2000	Yes	80 db	Yes	Yes	Yes	120VAC/15A	5.2 lbs

NOTE: EMI/RFI test frequency or range at 1 Mhz.



Hammond Manufacturing Co. Ltd.
394 Edinburgh Rd. North
Guelph, Ontario N1H 1E5 CANADA
© Phone: 519-822-2960 Fax: 519-822-0715



Hammond Manufacturing Co. Inc.
256 Sonwil Dr.
Cheektowaga, NY 14225 USA
Phone: 716-651-0086 Fax: 716-651-0726

Surge Suppressors

- ~ 120VAC @ 15 Amps
- ~ 6' cord, 14 gauge wire
- ~ Cord is 14/3 SJTW for extreme temperature ranges.
- ~ 8,000 Amp rated MOV's, two ferrite rod inductors & filter capacitor provide surge suppression and EMI/RFI noise protection.
- ~ 6 AC receptacles
- ~ Lighted on/off switch
- ~ Aluminum housing.
- ~ Maximum 24,000 Amps transient current.
- ~ 330V UL 1449 rating.
- ~ Response time of less than 1 nanosecond.
- ~ Protection in all 3 AC modes.
- ~ Voltage suppression at the outlet guards against transients from equipment on the power bar.
- ~ **In addition to the above the ZT407 includes:**
 - 1) power condition indicator for line power, protection and faults.
 - 2) Protection monitoring of all 3 AC modes with LEDs.
 - 3) Red LED fault indicator identifies power output problems.



ZT206



ZT407



Filtered Surge Suppressors

Part No.	Outlets	Joules	Crowbar Protection	EMI/RFI Min. Noise Attenuation	Differential & Common Mode Filtering	Diagnostic LED's	Telephone Protection	Electrical Rating	Shipping Weight
ZT206	6	222	-	50 db	-	-	-	120VAC/15A	4.0 lbs
ZT407	6	375	-	60 db	-	Yes	-	120VAC/15A	4.0 lbs

NOTE: EMI/RFI test frequency or range at 1 Mhz.

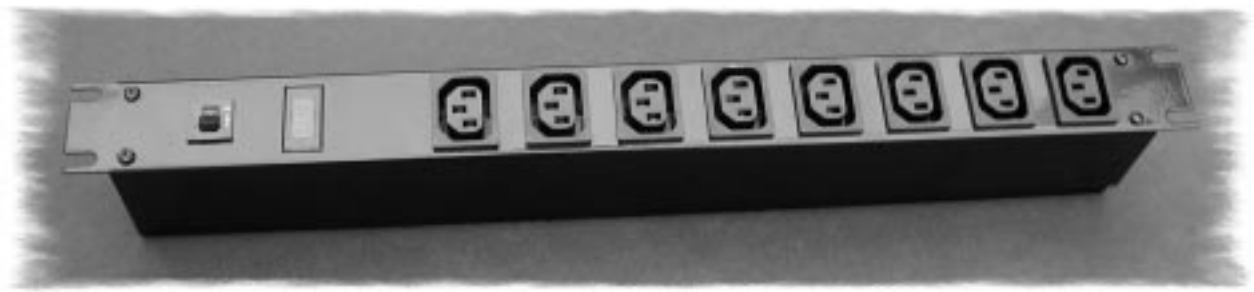


- ~ Designed for use with IEC power cords.
- ~ All metal housing – tough extruded aluminum case with black powder-coated steel cover.
- ~ 1 IEC 320 inlet and IEC 320 outlets.
- ~ Mounting feet with keyhole slots provide for work station mounting if desired.
- ~ Includes 10A, 220VAC circuit breaker to prevent accidental line overload.
- ~ UL pending.
- ~ CSA Certified.
- ~ TÜV certification pending

International Power Strips

Part No.	Outlets	On-Off Switch	Pilot Light	Dimensions (Inches)	Electrical Rating	Shipping Weight
1581H4	4	Yes	-	10 x 2 x 2	220VAC/10A	1.2 lbs
1581H5	5	Yes	-	11.75 x 2 x 2	220VAC/10A	1.2 lbs
1581H6	6	Yes	-	13.25 x 2 x 2	220VAC/10A	1.5 lbs
1581H8	8	Yes	-	17 x 2 x 2	220VAC/10A	2.0 lbs
1581T4	4	-	Yes	10 x 2 x 2	220VAC/10A	1.2 lbs
1581T5	5	-	Yes	11.75 x 2 x 2	220VAC/10A	1.2 lbs
1581T6	6	-	Yes	13.25 x 2 x 2	220VAC/10A	1.5 lbs
1581T8	8	-	Yes	17 x 2 x 2	220VAC /10A	2.0 lbs

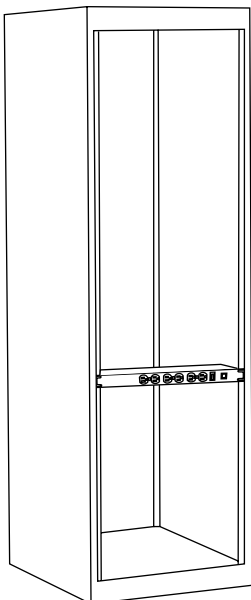




- ~ Designed for use with IEC power cords.
- ~ All steel housing with black powder coat finish.
- ~ 1 IEC 320 inlet, and 8 IEC 320 outlets.
- ~ Standard 19" rack mount
- ~ Designed for power distribution from front of unit.
- ~ Includes 10A, 220VAC circuit breaker to prevent accidental line overload.
- ~ UL pending.
- ~ CSA Certified.
- ~ TÜV certification pending.

International Rack Mount Power Panels

Part No.	Outlets	Receptacle Location	Inlet Location	On-Off Switch	Pilot Light	Dimensions (Inches)	Electrical Rating	Shipping Weight
1582H8E1BK	8	Front	Rear	Yes	-	19 x 3 x 2	220VAC/10A	4.0 lbs
1582T8E1BK	8	Front	Rear	-	Yes	19 x 3 x 2	220VAC/10A	4.0 lbs
1583H8E1BK	8	Rear	Rear	Yes	-	19 x 3 x 2	220VAC/10A	4.0 lbs
1583T8E1BK	8	Rear	Rear	-	Yes	19 x 3 x 2	220VAC/10A	4.0 lbs





P0801

- ~ Economical design, basic power bar - **no surge protection.**
- ~ Molded in UL VO grade flame retardant plastic case.
- ~ 3' long, heavy 14 gauge wire cord - integral molded plug.
- ~ On/Off switch and 15 Amp circuit breaker.
- ~ Rated 15 amps, 115 volt.
- ~ CSA certified & UL listed.



P0802 & P08026

- ~ One MOV between line and neutral.
- ~ Molded with UL VO grade flame retardant plastic.
- ~ 15 Amp circuit breaker and on/off switch.
- ~ Features a surge status indicator (if light is on, the unit is protecting, if light is off, a surge has occurred and the unit should be replaced).



Hammond Manufacturing Co. Ltd.
394 Edinburgh Rd. North
Guelph, Ontario N1H 1E5 CANADA
© Phone: 519-822-2960 Fax: 519-822-0715



Hammond Manufacturing Co. Inc.
256 Sonwil Dr.
Cheektowaga, NY 14225 USA
Phone: 716-651-0086 Fax: 716-651-0726



P0803 & P08036

- ~ MOV protection in all 3 AC modes and EMI/RFI line filter.
- ~ Noise attenuation: 10-35 dB @ 500Khz. - 30Mhz.
- ~ Molded with UL VO grade flame retardant plastic.
- ~ 15 Amp circuit breaker and lighted on/off switch.
- ~ Features a surge status indicator (if light is on, the unit is protecting, if light is off, a surge has occurred and the unit should be replaced).



P0503

- ~ MOV protection in all 3 AC modes.
- ~ Molded with UL VO grade flame retardant plastic.
- ~ 15 Amp circuit breaker and lighted on/off switch.
- ~ Features a surge status indicator (if light is on, the unit is protecting, if light is off, a surge has occurred and the unit should be replaced).
- ~ Telecom protection (45 joules), two MOV circuit and 6' phone cord.



P0504

- ~ MOV protection in all 3 AC modes.
- ~ Molded with UL VO grade flame retardant plastic.
- ~ 15 Amp circuit breaker and lighted on/off switch.
- ~ Features a surge status indicator (if light is on, the unit is protecting, if light is off, a surge has occurred and the unit should be replaced).
- ~ Video protection (25 joules), gas tube and MOV protection and 6' coax jumper cord.

Plastic Power Strips

	Part No.	Outlets	Cord	Surge	Max. Spike Energy (Joules)	Status Indicator	EMI/RFI
No Surge	P0801	6	3'	No	-	-	-
Basic Surge	P0802	6	3'	Yes	50	Yes	-
	P08026	6	6'	Yes	50	Yes	-
Full Surge	P0503	6	6'	Yes	175	Yes	-
	P0504	6	6'	Yes	175	Yes	-
	P0803	6	4'	Yes	175	Yes	Yes
	P08036	6	6'	Yes	175	Yes	Yes



Additional Features of Surge Protected Units

- 1) Maximum spike voltage: 6,000 volts
- 2) Maximum spike current: 4,500 amps
- 3) Maximum clamping voltage: 340 volts
- 4) Clamping response time: less than 1 nanosecond
- 5) UL 1449: 500V



SURGE CHECK ✓ Plus



P0902

- ~ Basic surge protection (70 joules).
- ~ 9 Outlets - 3 with extra spacing for adaptors and transformers.
- ~ Lighted on/off switch & 15 Amp circuit breaker.

P0903

- ~ Full surge protection (900 joules) with warning buzzer.
- ~ 8 Outlets - 2 with extra spacing for adaptors and transformers.
- ~ Modem/Fax/phone protection - 1 line in, 2 lines out.
- ~ Lighted on/off switch & 15 Amp circuit breaker.
- ~ **Bonus 6' telephone cord included!**



P0905

- ~ Full surge protection (900 joules) with warning buzzer.
- ~ 8 Outlets - 2 with extra spacing for adaptors and transformers.
- ~ Modem/Fax/phone protection - 1 line in, 2 lines out.
- ~ Satellite/TV/VCR protection (gold plated coax connectors).
- ~ Lighted on/off switch & 15 Amp circuit breaker.
- ~ **Bonus 6' telephone and 6' coax cord included!**



Surge Check Plus - Specifications

	P0902	P0903	P0905
Number of Outlets	9	8	8
Line Cord Length	6'	6'	6'
Alarm Buzzer	No	Yes	Yes
Internet/Phone Protection	No	Yes	Yes
Satellite/VCR Protection	No	No	Yes
Surge Indicator Light	Yes	Yes	Yes
Ground Indicator Light	No	Yes	Yes
Polarity Indicator Light	No	Yes	Yes
Ground Screw	No	No	Yes
Electrical Rating	125V, 15A	125V, 15A	125V, 15A
Maximum Surge Dissipation	70 Joules	900 Joules	900 Joules
Maximum Surge Voltage	6,000V	6,000V	6,000V
Maximum Spike Current	4,500A	10,000A	10,000A
Clamping Voltage	400V	400V	400V
Clamping Response Time	< 1 nanosecond	<1 nanosecond	<1 nanosecond
Noise Attenuation	None	10dB to 40dB @ 100 Khz. to 100 Mhz.	10dB to 40dB @ 100 Khz. to 100 Mhz.
Temperature Range	-40 C to +80 C	-40 C to +80 C	-40 C to +80 C
UL Listing	UL 1449	UL 1449	UL 1449



Auto Line Transformer

- ~ Single winding for use where equipment is already isolated and only voltage change is required
- ~ **Does not provide isolation**
- ~ Input is circuit breaker protected
- ~ Hi-pot tested to 2 KV RMS
- ~ Standard 3-wire, grounded plug (can also be used with adaptors for proper grounding)
- ~ Input connected to a 5 foot cord & grounded North American 230V plug
- ~ Output connected to a standard N. American 115V - 3 wire grounded receptacle (NEMA 5-15R)
- ~ North American Mark of Safety: cUL & UL listed



230VAC to 115VAC

Step Down (North American 230V Plug & 115V Receptacle)

Part No.	Capacity VA	Dimensions (Inches)			Mounting Hole Centers (Inches)		Shipping Weight
		W	D	H	W	D	
175A-NA	100	3.16	4.25	3.81	2.50	2.94	3.5
175B-NA	200	3.16	4.50	3.81	2.50	3.19	4.5
175C-NA	300	3.16	5.00	3.81	2.50	3.69	6.0
175D-NA	500	3.80	6.00	4.68	3.00	4.38	10.0
175E-NA	750	3.80	7.06	4.68	3.00	5.38	14.0
175F-NA	1000	3.80	7.06	4.68	3.00	5.38	14.5
175G-NA	1500	4.40	6.63	5.39	3.50	6.09	22.0



- ~ Single winding for use where equipment is already isolated and only voltage change is required
- ~ **Does not provide isolation**
- ~ Input is circuit breaker protected
- ~ Hi-pot tested to 2 KV RMS
- ~ Standard 3-wire, grounded plug (can also be used with adaptors for proper grounding)
- ~ Input connected to a 5 foot cord & standard grounded European (Schuko) plug
- ~ Output connected to a standard N. American 115V - 3 wire grounded receptacle (NEMA 5-15R)
- ~ North American Mark of Safety: cUL & UL listed



230VAC to 115VAC

Step Down (European Plug & North American Receptacle)

Part No.	Capacity VA	Dimensions (Inches)			Mounting Hole Centers (Inches)		Shipping Weight
		W	D	H	W	D	
175A-EU	100	3.16	4.25	3.81	2.50	2.94	3.5
175B-EU	200	3.16	4.50	3.81	2.50	3.19	4.5
175C-EU	300	3.16	5.00	3.81	2.50	3.69	6.0
175D-EU	500	3.80	6.00	4.68	3.00	4.38	10.0
175E-EU	750	3.80	7.06	4.68	3.00	5.38	14.0
175F-EU	1000	3.80	7.06	4.68	3.00	5.38	14.5
175G-EU	1500	4.40	6.63	5.39	3.50	6.09	22.0



Auto Line Transformer

- ~ Single winding for use where equipment is already isolated and only voltage change is required
- ~ **Does not provide isolation**
- ~ Input is circuit breaker protected
- ~ Hi-pot tested to 2 KV RMS
- ~ Standard 3-wire, grounded plug (can also be used with adaptors for proper grounding)
- ~ Input is connected to a 5 foot cord & standard grounded North American plug (NEMA 5-15P)
- ~ Output is connected to a grounded European (Schuko) receptacle
- ~ North American Mark of Safety: cUL & UL listed



115VAC to 230VAC Step Up Transformer



Part No.	Capacity VA	Dimensions (Inches)			Mounting Hole Centers (Inches)		Shipping Weight
		W	D	H	W	D	
176A	120	3.16	4.25	3.81	2.50	2.94	3.5
176B	200	3.16	4.50	3.81	2.50	3.19	4.5
176C	300	3.16	5.00	3.81	2.50	3.69	6.0
176D	500	3.80	6.00	4.68	3.00	4.38	10.0
176E	750	3.80	7.06	4.68	3.00	5.38	14.0
176F	1000	3.80	7.06	4.68	3.00	5.38	14.5
176G	1500	4.40	6.63	5.39	3.50	6.09	22.0

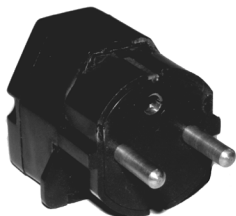
International - Grounded Adaptor Plugs

- ~ For use with our 171, 172, 175 & 176 series transformers.
- ~ Heavy duty design with plastic shell and double wipe contacts.
- ~ Allows for ground connection between equipment and international power sources.
- ~ With a set of all 4 adaptors, they will accept equipment with plugs from virtually every country South Africa
- ~ **Adaptors do not affect voltages**, they are a mechanical device only to match foreign "pinouts" of receptacles and/or plugs.

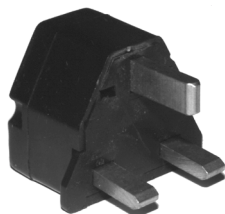


Rear View of all adaptors

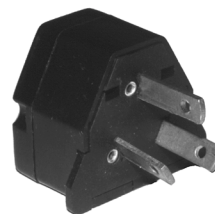
Part No.	Grounded Plug Type	Used in the Countries of:
298G4	European	Austria, Belgium, Finland, France, Germany, Middle East, Netherlands, Norway, Parts of Africa/Asia/SouthAmerica/China/Tahiti & Caribbean, Sweden
298G3	British	Hong Kong, Ireland, Malaysia, Parts of Africa/Caribbean, Singapore, U.K.
298G6	Australian	Australia, People's Republic of China, S. Pacific Islands, New Zealand
298G7	N. American	Canada, Parts of the Caribbean/South America, Philippines, USA



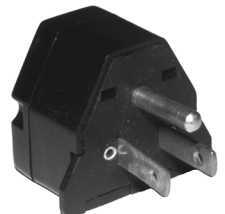
298G4



298G3



298G6



298G7



Hammond Manufacturing Co. Ltd.
394 Edinburgh Rd. North
Guelph, Ontario N1H 1E5 CANADA
© Phone: 519-822-2960 Fax: 519-822-0715



Hammond Manufacturing Co. Inc.
256 Sonwil Dr.
Cheektowaga, NY 14225 USA
Phone: 716-651-0086 Fax: 716-651-0726

Constant Voltage Line Transformer



- ~ AC regulating - protects against both brownouts & over voltage conditions
- ~ Will operate through a 3 millisecond (minimum) blackout
- ~ Long life - ferroresonant design - no moving parts
- ~ Ferroresonant design also filters out surges, line harmonics and RF noise
- ~ Input 120VAC (+10% to -25%), 60 Hz. Output 120VAC (+/- 3%).
- ~ Provides circuit isolation
- ~ Noise isolation (RF) of 120 db common mode, 60 db normal mode
- ~ Spike attenuation: 250:1 minimum
- ~ Sine wave output - total harmonic distortion (THD): 3%
- ~ Unit includes a 2nd stage of high frequency filtering on the output
- ~ Operating temperature range of -40 degrees C to +40 degrees C
- ~ Input (primary) connected to a 15 foot, heavy duty 14/3 SJTW cord for extreme temperature ranges
- ~ Integral molded, standard North American plug (NEMA 5-15P)
- ~ Low audible noise transformer & enclosure design
- ~ Rugged two piece ventilated steel enclosure
- ~ Finished in a grey/beige color, textured powder paint with rubber feet installed
- ~ North American Mark of Safety: cUL & UL listed

Constant Voltage Line Transformers

Part No.	Capacity		Number of Rear Outlets	Dimensions (Inches)			Shipping Weight
	VA	Amps (RMS)		H	W	D	
CV120300	300	2.5	2	7	7.13	12.3	25.3 lbs
CV120600	600	5	4	9	10.13	19.5	48.0 lbs
CV1201200	1200	10	4	9	10.13	19.5	74.0 lbs
CV1201800	1800	15	6	12	12.13	20.5	95.0 lbs



Isolating Line Transformer

- ~ Provides circuit isolation
- ~ Electrostatic shield between primary & secondary
- ~ Hi-pot tested to 2 KV RMS
- ~ Circuit breaker in primary
- ~ Standard 3-wire, grounded plug & receptacle
- ~ Input (primary) connected to 5 foot long cord & standard North American plug (NEMA 5-15P)
- ~ Output (secondary) connected to 1 foot long 3-wire, standard North American grounded receptacle (NEMA 5-15R)
- ~ North American Mark of Safety: cUL & UL listed



115VAC to 115VAC Isolation Transformer (50/60 Hz.)

Part No.	Capacity VA	Dimensions (Inches)			Mounting Hole Centers (Inches)		Shipping Weight
		W	D	H	W	D	
171A	100	3.80	5.06	4.68	3.00	3.38	6.5 lbs
171B	200	3.80	5.56	4.68	3.00	3.88	8.0 lbs
171C	300	3.80	6.06	4.68	3.00	4.38	11.0 lbs
171E	500	3.80	7.06	4.68	3.00	5.38	14.0 lbs
171F	750	4.40	8.70	5.39	3.50	6.78	30.0 lbs
171G	1000	5.28	7.75	6.38	4.25	4.38	34.5 lbs



- ~ Provides circuit isolation & steps down primary voltage
- ~ Electrostatic shield between primary & secondary
- ~ Hi-pot tested to 2 KV RMS
- ~ Circuit breaker in primary
- ~ Standard 3-wire, grounded plug & receptacle
- ~ Input (primary) connected to 5 foot long cord & European (Schuko) grounded plug
- ~ Output (secondary) connected to 1 foot long 3-wire, standard North American grounded receptacle (NEMA 5-15R)
- ~ North American Mark of Safety: cUL & UL listed



230VAC to 115VAC Step Down Transformer (50/60 Hz.)

Part No.	Capacity VA	Dimensions (Inches)			Mounting Hole Centers (Inches)		Shipping Weight
		W	D	H	W	D	
172A	100	3.80	5.06	4.68	3.00	3.38	6.5 lbs
172B	200	3.80	5.56	4.68	3.00	3.88	8.5 lbs
172D	550	3.80	7.06	4.68	3.00	5.38	18.5 lbs
172E	750	4.40	8.70	5.39	3.50	6.78	30.0 lbs
172F	1000	5.28	7.75	6.38	4.25	4.38	34.5 lbs



Hammond Manufacturing Co. Ltd.
394 Edinburgh Rd. North
Guelph, Ontario N1H 1E5 CANADA
© Phone: 519-822-2960 Fax: 519-822-0715



Hammond Manufacturing Co. Inc.
256 Sonwil Dr.
Cheektowaga, NY 14225 USA
Phone: 716-651-0086 Fax: 716-651-0726

Accessories

Hammond outlet strips are designed for heavy-duty applications to connect equipment in offices, industry, workshops, labs, hospitals and schools.

At Hammond we pride ourselves on the quality of our components – tough extruded aluminum, sheet metal with a robust powder coat paint finish, and electrical components selected for their ability to survive in an industrial environment.

Our power cords are ribbed SJTW for added strength and flexibility (especially in cold weather). Plugs are molded onto the cord for extra strength and outstanding durability.

Plug Data



Nema 5-15P

Our 15 amp “straight blade” plug. 14/3 SJTW cord is available in 6 foot and 15 foot lengths.



Nema 5-20P

Our 20 amp “straight blade” plug. 12/3 SJTW cord is available in 6 foot and 15 foot lengths.



Nema L5-15P

Our 15 amp “twist-lock” plug. 14/3 SJTW cord is available in 6 foot and 15 foot lengths.



Nema L5-20P

Our 20 amp “twist-lock” plug. 12/3 SJTW cord is available in 6 foot, 10 foot and 15 foot lengths.

Components



1584B15



1584SR20



1584PL



1584S3

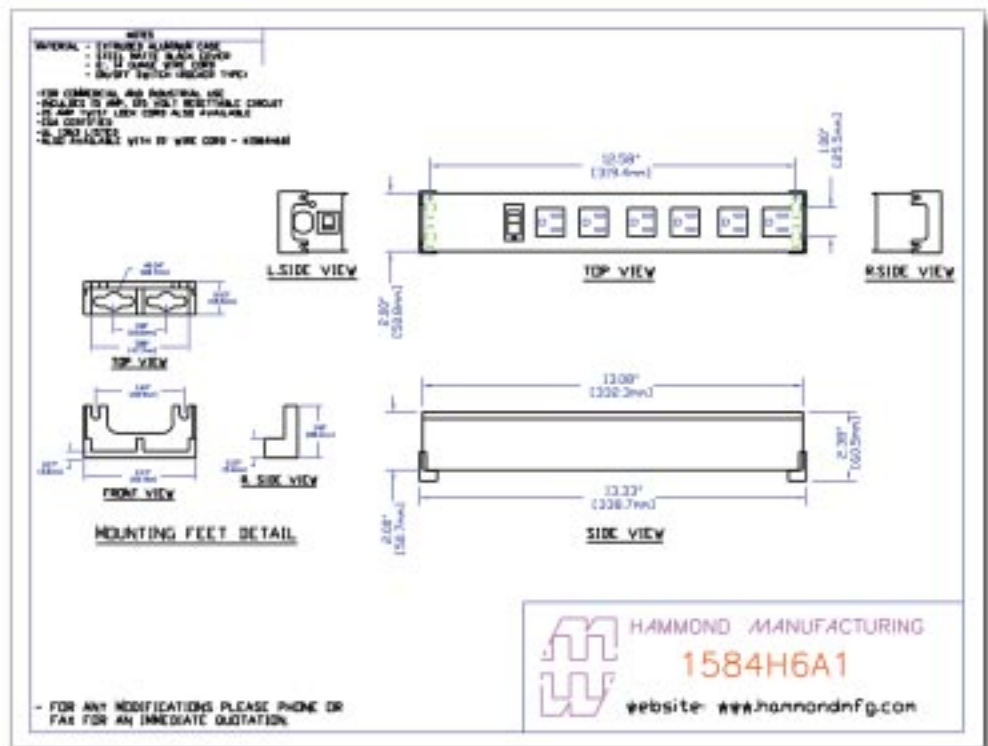
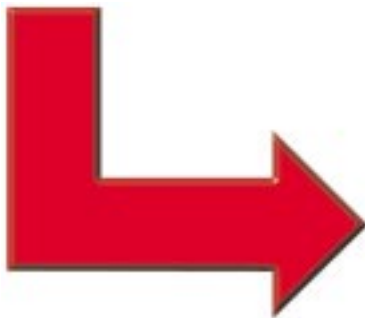


1584SR

Part No.	Description
1584B15	Circuit Breaker 15A/125VAC
1585B20	Circuit Breaker 20A/125VAC
1585CLIP	Mounting Kit for Vertical Rack Mount Strips
1584PL	Indicator Light With Leads 125VAC
1584S3	Lighted Rocker Switch 15A/125VAC
1584SR	Single Receptacle 15A/125VAC
1584SR20	Single Receptacle 20A/125VAC
1584C6	Power Cord 6.5' SJTW - 14/3 15A Straight Blade
1584C15	Power Cord 15.5' SJTW - 14/3 15A Straight Blade
1584C6TW	Power Cord 6.5' SJTW - 14/3 15A Twist-Lock
1584C15TW	Power Cord 15.5' SJTW - 14/3 15A Twist-Lock
1584C6S20	Power Cord 6.5' SJTW - 12/3 20A Straight Blade
1584C15S20	Power Cord 15.5' SJTW - 12/3 20A Straight Blade
1584C6TW20	Power Cord 6.5' SJTW - 12/3 20A Twist-Lock
1584C10TW20	Power Cord 10.5' SJTW - 12/3 20A Twist-Lock
1584C15TW20	Power Cord 15.5' SJTW - 12/3 20A Twist-Lock

Visit our web site for:

- individual part number dimension drawings in color downloadable in Adobe Reader PDF format (cross-platform document). Readable and printable in high resolution! If you don't have Adobe's Reader software we even supply a link to their site for a **free** download...
- individual part number dimension drawings in .dxf format for AutoCAD (Ver. 13) users...
- up to the minute product additions and changes...
- engineering bulletins...
- FAST e-mail links to our marketing department to order our other product catalogs...
- Distributor locations and links - we have teamed up with the best in the industry to bring you our products **fast**. Many complete with "on-line" order entry...
- and much, much more....even a link to the fascinating Hammond "Museum of Radio"





**HAMMOND
MANUFACTURING™**

www.hammondmfg.com

IN CANADA...

**Hammond Mfg. Co. Ltd.
394 Edinburgh Rd., North
Guelph, Ontario N1H 1E5**

***Phone:* 519-822-2960**

***Fax:* 519-822-0715**

IN QUEBEC...

**Les Fabrications Hammond
(Quebec) Inc.
4240 Seré Street
St. Laurent, Quebec H4T 1A6**

***Tel:* 514-343-9010**

***Fax:* 514-343-9941**

IN THE U.K....

**Hammond Electronics Limited
1 Onslow Close
Kingsland Business Park
Basingstoke, Hampshire
RG24 8QL**

***Tel:* 01256 812812**

***Fax:* 01256 332249**

IN THE USA...

**Hammond Mfg. Co. Inc.
256 Sonwil Dr.
Cheektowaga, NY 14225**

***Phone:* 716-651-0086**

***Fax:* 716-651-0726**

Distributed By: