



end-to-end  
Solutions

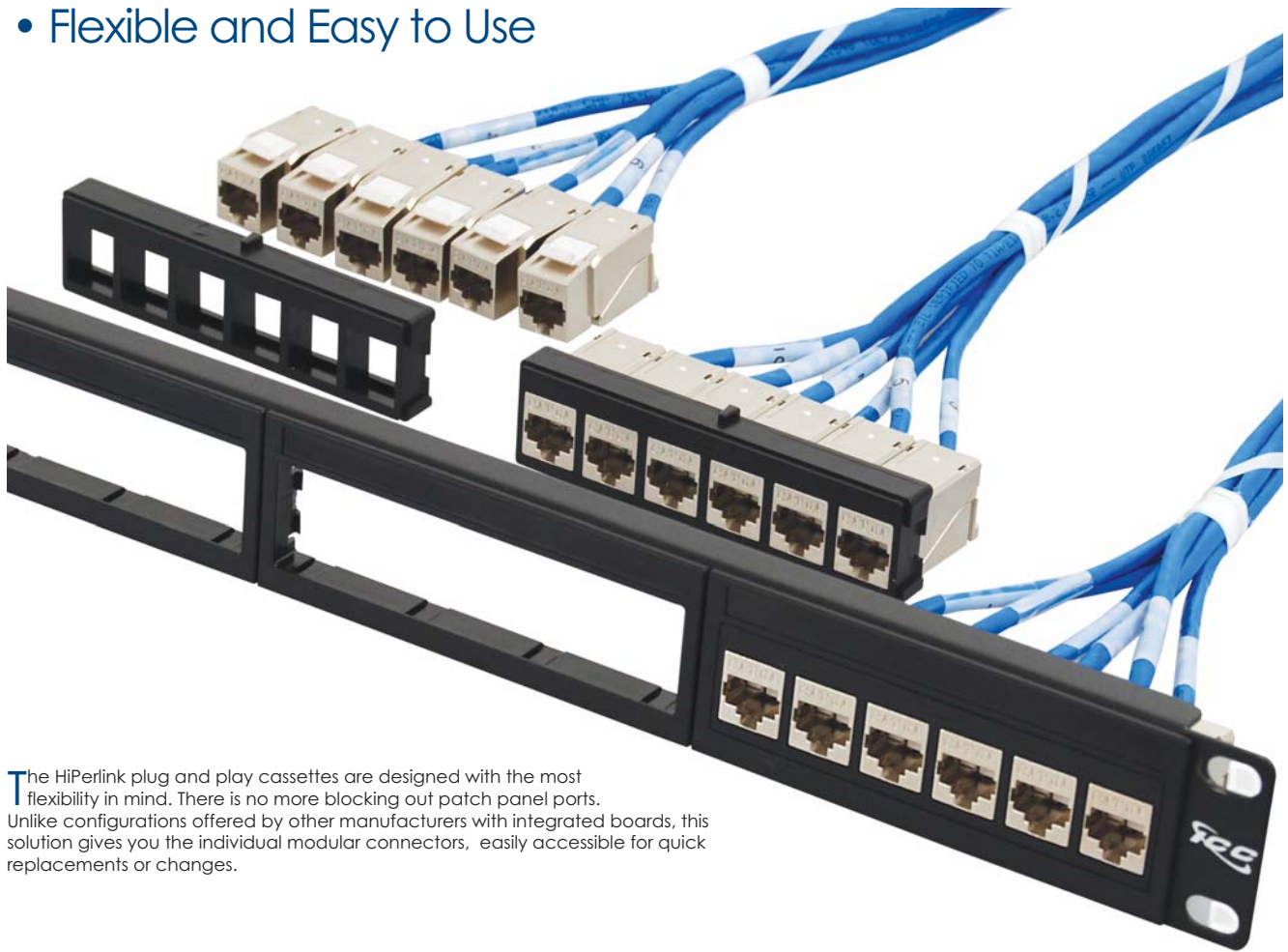
**HiPerlink**  
Copper

- ✓ Factory Terminated
- ✓ Plug and Play
- ✓ Modular and Flexible
- ✓ Lifetime Reliability\*

Pre-Terminated Copper  
Structured Cabling Solutions

PremiumProducts | ProvenPerformance | CompetitivePrices...ICC

- Flexible and Easy to Use



The HiPerlink plug and play cassettes are designed with the most flexibility in mind. There is no more blocking out patch panel ports. Unlike configurations offered by other manufacturers with integrated boards, this solution gives you the individual modular connectors, easily accessible for quick replacements or changes.



## Plug and Play + Performance + Flexibility... and still SAVE 50% or more!

What makes ICC's HiPerlink preterminated cable assemblies so great for installers is that ICC is the single source for all of the components. Everything from the connecting hardware to the cabling...end-to-end. ICC's product specialists will work closely with installers to ensure that the assemblies are built precisely to fit their needs. Through ICC's expertise, installers can achieve addition cost savings and obtain factory tested, built-to-order, bundled assemblies ready to install.

Do you want to be competitive? ICC maintains it's aggressively low prices, so you can win more jobs and earn higher profit margins.

**Talk to us now by calling 888.ASK.4.ICC extension 4000 today!**



ISO 9001:2000 Registered

PremiumProducts | ProvenPerformance | CompetitivePrices...ICC

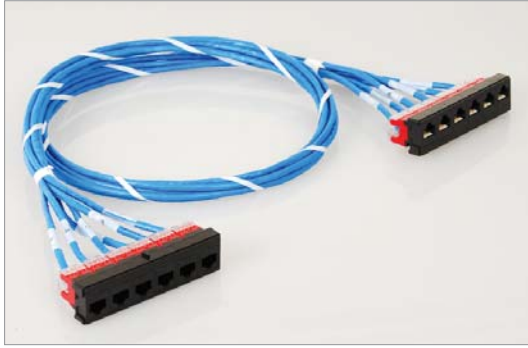


### Cassette-to-Cassette CAT 6A Shielded Assembly

- For installations between cross-connects
- 360° shielded protection with 10 Gigabit Ethernet performance
- Exceeds TIA 568-B.2-10 CAT 6A performance requirements
- CMP (Plenum) or CMR (Riser) rated cable

Part Number	Description
ICHPSAHxxxFWH*	Cassette-to-Cassette, CAT 6A FTP, white CMP cable assembly
ICHPSAGxxxFBL*	Cassette-to-Cassette, CAT 6A FTP, blue CMR cable assembly

\*xxx (length) = 025 (25-ft.), 050 (50-ft.), 100 (100-ft.)



### Cassette-to-Cassette CAT 6 UTP Assembly

- For installations between cross-connects
- Cost-effective solution for high-speed Ethernet applications
- Exceeds TIA 568-B.2-1 CAT 6 performance requirements
- CMP (Plenum) or CMR (Riser) rated cable

Part Number	Description
ICHPSABxxxAWH*	Cassette-to-Cassette, CAT 6 UTP, white CMP cable assembly
ICHPSAAxxxABL*	Cassette-to-Cassette, CAT 6 UTP, blue CMR cable assembly

\*xxx (length) = 025 (25-ft.), 050 (50-ft.), 100 (100-ft.)



### Cassette-to-Modular Connectors CAT 6A Shielded Assembly

- For installations between cross-connect and work area.
- 360° shielded protection with 10 Gigabit Ethernet performance
- Exceeds TIA 568-B.2-10 CAT 6A performance requirements
- CMP (Plenum) or CMR (Riser) rated cable

Part Number	Description
ICHPSBHxxxFWH*	Cassette-to-Modular Connector, CAT 6A FTP, white CMP cable assembly
ICHPSBGxxxFBL*	Cassette-to-Modular Connector, CAT 6A FTP, blue CMR cable assembly

\*xxx (length) = 025 (25-ft.), 050 (50-ft.), 100 (100-ft.)



### Cassette-to-Modular Connectors CAT 6 UTP Assembly

- For installations between Telecom Room to work area.
- Cost-effective solution for high-speed Ethernet applications
- Exceeds TIA 568-B.2-1 CAT 6 performance requirements
- CMP (Plenum) or CMR (Riser) rated cable

Part Number	Description
ICHPSBBxxxAWH*	Cassette-to-Cassette, CAT 6 UTP, white CMP cable assembly
ICHPSBAxxxABL*	Cassette-to-Cassette, CAT 6 UTP, blue CMR cable assembly

\*xxx (length) = 025 (25-ft.), 050 (50-ft.), 100 (100-ft.)



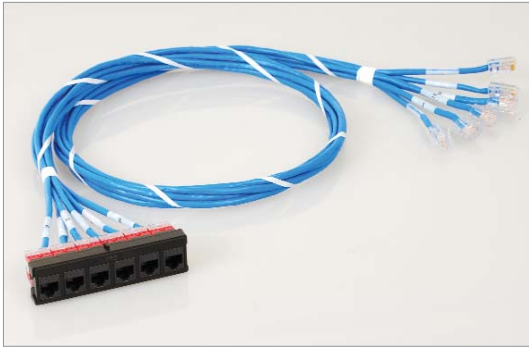
### Cassette-to-Patch Box CAT 6 UTP Assembly

- For installations between Telecom Room to Work Area.
- Cost-effective solution for high-speed Ethernet applications
- Exceeds TIA 568-B.2-1 CAT 6 performance requirements
- CMP (Plenum) or CMR (Riser) rated cable

Part Number	Description
ICHPSFAxxxAWH*	Cassette-to-Patch Box, CAT 6 UTP, white CMP cable assembly
ICHPSFBxxxABL*	Cassette-to-Patch Box, CAT 6 UTP, blue CMR cable assembly

\*xxx (length) = 025 (25-ft.), 050 (50-ft.), 100 (100-ft.)



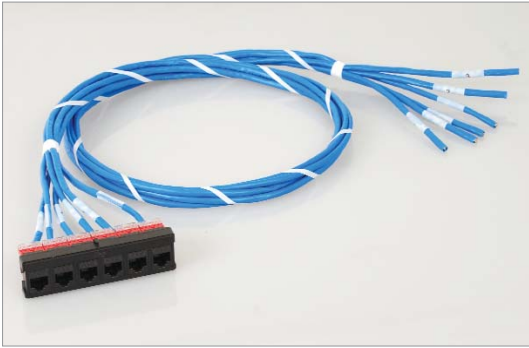


### Cassette-to-Modular Plugs CAT 6 UTP Assembly

- For installations between Data Rack and active hardware
- Cost-effective solution for high-speed Ethernet applications
- Exceeds TIA 568-B.2-1 CAT 6 performance requirements
- CMP (Plenum) or CMR (Riser) rated cable

Part Number	Description
ICHPSCBxxxAWH*	Cassette-to-Plug, CAT 6 UTP, white CMP cable assembly
ICHPSCAxxxABL*	Cassette-to-Plug, CAT 6 UTP, blue CMR cable assembly

\*xxx (length) = 025 (25-ft.), 050 (50-ft.), 100 (100-ft.)



### Cassette-to-Blunt 'open-ended' CAT 6 UTP Assembly

- For installations between Telecom Room to work area with 110 termination.
- Cost-effective solution for high-speed Ethernet applications
- Exceeds TIA 568-B.2-1 CAT 6 performance requirements
- CMP (Plenum) or CMR (Riser) rated cable

Part Number	Description
ICHPSDBxxxAWH*	Cassette-to-Blunt, CAT 6 UTP, white CMP cable assembly
ICHPSDAxxxABL*	Cassette-to-Blunt, CAT 6 UTP, blue CMR cable assembly

\*xxx (length) = 025 (25-ft.), 050 (50-ft.), 100 (100-ft.)



## Custom Solutions Available!

Ask us how we can customize your application. ICC also offers a wide selection of cable management solutions to complete your installation.

- 1 Cable Type and Jacket Color
- 2 Cable Count
- 3 Termination Type
- 4 Breakout Length (Inches)
- 5 Modular Connector and Color
- 6 Modular Plug and Boot Color
- 7 Labels
- 8 Assembly Length (Tip-Tip)



- Standard labeling includes a label on each individual cable. All assemblies are wired to T568B specification.
- Copper lengths less than 75 ft are packaged in box; lengths of 76 - 295 feet are packaged on a reel.
- One HiPerlink Patch Panel included with every cassette.



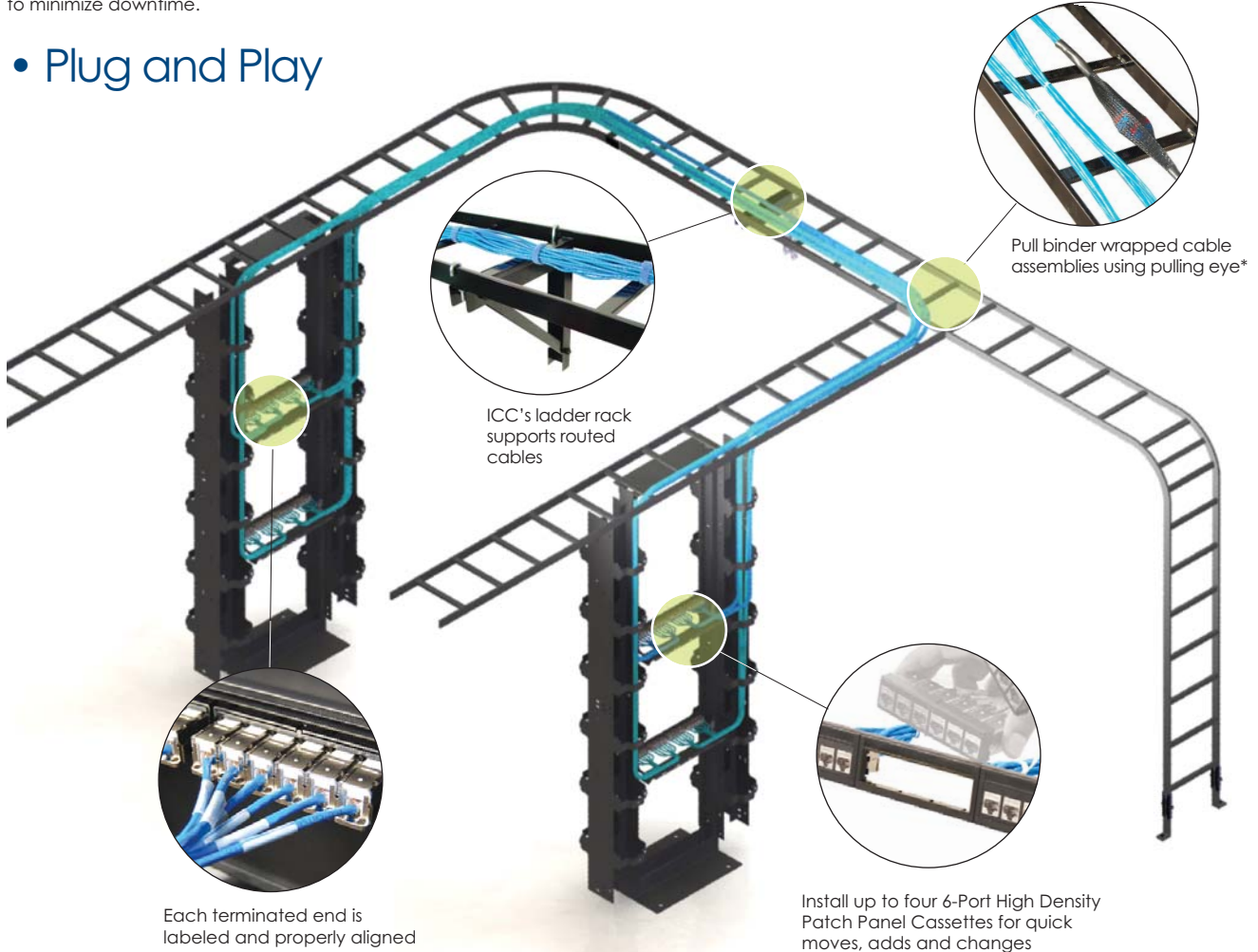
ISO 9001:2000 Registered

PremiumProducts | ProvenPerformance | CompetitivePrices...ICC

# What can ICC's HiPerlink™ Solution do for you?

ICC's HiPerlink Pre-Terminated Cable Assemblies provide installers with a fast and simplified way of installing backbone cross-connect cabling. ICC's pre-terminated cable assemblies are ideal for large data center applications and designed for quick moves, add's and changes (MACs) to minimize downtime.

## • Plug and Play

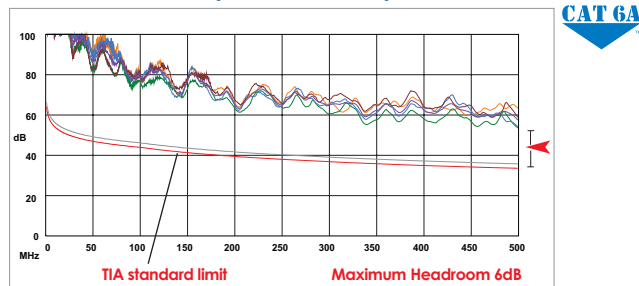


\*Pulling eye not available with all assemblies.

## • Performance and Reliability

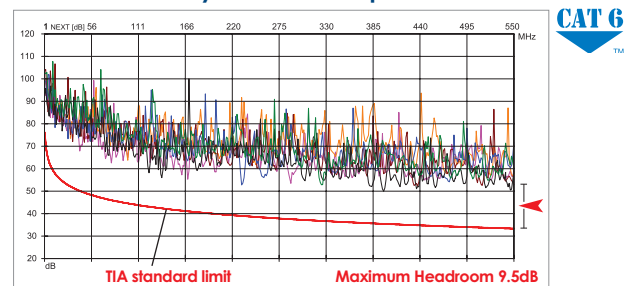
ICC's HiPerlink Pre-Terminated Cable Assemblies are factory built, terminated, and tested to ensure results exceeding TIA standards. Performance test reports are included with every terminated assembly and backed by ICC's Lifetime Certified Site Cabling System Limited Warranty.\*

### CAT 6A HiPerlink system tested up to 500 MHz!



CAT 6A channel test results versus TIA/EIA 568-B.2-10 performance standards

### CAT 6 HiPerlink system tested up to 550 MHz!



CAT 6 channel test results versus TIA/EIA 568-B.2-1 performance standards



### 15-Year Channel Component Limited Warranty

ICC warrants all end-to-end pre-terminated cable assembly category rated channel components and horizontal cabling manufactured by ICC against performance for 15 years from the date of purchase.



### Lifetime Certified Site Cabling System Limited Warranty

ICC warrants all end-to-end pre-terminated cable assembly category rated channel components and horizontal cabling manufactured by ICC against performance for the lifetime of the installation.

\*Eligibility for ICC's Lifetime Certified Site Cabling System Limited Warranty is subject to terms and conditions. Talk to your ICC Regional Manager for more information.

# Complete Solutions

## • You have 5 different ways to complete your installation!

No matter what the application requirements are, ICC offers the right cable assembly to fit your needs.

ICC's HiPerlink Pre-Terminated Cable Assemblies are the easiest way to install a complete structured cabling system without the trouble of terminating, testing, and bundling cable.



### 1. Cassette-to-Cassette



### 2. Cassette-to-Modular Connector



### 3. Cassette-to-Patch Box



### 4. Cassette-to-Modular Plug



### 5. Cassette-to-Blunt



#### 1. Cassette-to-Cassette

Preferred option for cable runs between cross connect patch panels, there is the cassette to cassette configuration that easily snaps into HiPerlink panels.

#### 2. Cassette-to-Modular Connector

Preferred option for cabling between cross-connects with patch panel flexibility or from cross-connect to central multiuser telecommunications outlet assembly.

#### 3. Cassette-to-Patch Box

Preferred option from cross-connect to open environments such as small offices, classrooms, and temporary networks. It provides a flexible solution for small installations and applications with "on the go" communication needs used with a multitude of applications.

#### 4. Cassette-to-Modular Plug

Preferred option for cabling between cross-connect and active hardware (i.e switches and hubs).

#### 5. Cassette-to-Blunt

Preferred option for cabling from cross-connect to other cross-connect with site determined termination requirements.

ICC  
14700 Alondra Blvd.  
La Mirada, CA 90638

Toll Free: 888.ASK.4.ICC (275-4422) ext. 4000  
Phone: 562.356.3111  
Fax: 562.356.3100

E-mail: [csr@icc.com](mailto:csr@icc.com)  
Website: [www.icc.com/hiperlink](http://www.icc.com/hiperlink)

MMILIT0463-1108