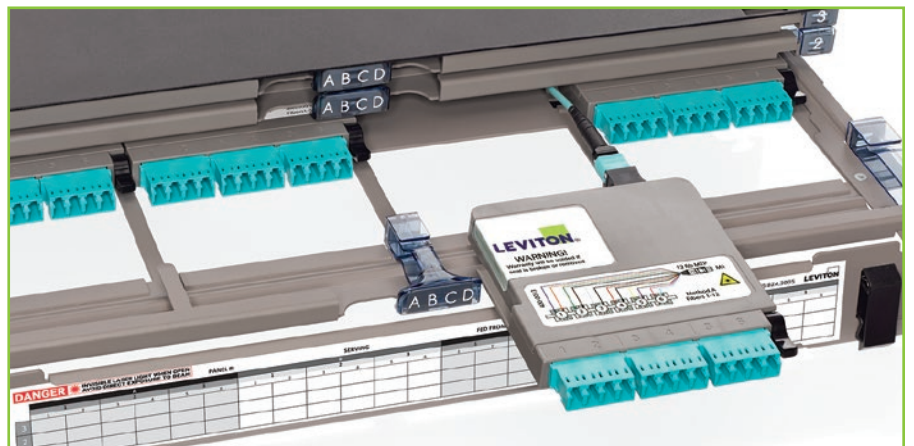


# FIBER SYSTEMS

Network Infrastructure Platforms for Every Application



# FIBER SYSTEMS

Whether your installation is small or large, simple or complex, you can rely on Leviton for a network patching platform that meets your requirements. From cloud data center to remote telecom room, from service provider to enterprise office building, Leviton solutions are versatile enough to meet specific customer demands, ensuring migration options for future bandwidth growth and strong return on infrastructure investment.

System Features:

- Ultra high density (144F per RU)
- High density (96F per RU)
- Standard density (72F per RU)
- Angled panel eliminates need for patch cord cable manager
- Individual sliding trays minimize impact on surrounding fibers
- TAP Cassette option to monitor networks for performance and security
- One-handed, single-click cassette installation for easy deployment
- 10/40/100G Unity migration to simplify tech upgrades
- OM4+ fiber type for extended-reach fiber networks
- OM1 / OM2 / OM3 / OM4 / OS2 fiber types for backward compatibility
- Precision-molded adapter plates for durable network connections
- Allows mix of copper and fiber for network flexibility
- Cassettes with adjustable rear MTPs for improved bend radius
- Field splicing capability



## Opt-X® SDX

Enterprise

Versatile solutions in multiple sizes and styles for small data centers and enterprise applications.

## e2XHD

Mission Critical

High-density snap-in cassettes allow a mix of fiber or copper patching for large enterprise applications.

## Opt-X HDX

Mission Critical

Ultra high density to help meet increasing network demands in data centers.

			✓
		✓	
	✓		
		✓	✓
			✓
			✓
			✓
		✓	✓
		✓	✓
		✓	✓
		✓	✓
	✓	✓	✓
	✓		
	✓	✓	
		✓	
	✓		





## Opt-X® UHD X Enclosures

UHD X offers the highest fiber density per rack unit along with easy port identification and cable management. Available in 1RU, 2RU, and 4RU sizes, UHD X Enclosures help consolidate patching and free up rack space.

- Up to 144 LC fibers in a 1RU enclosure, 288 LC fibers in a 2RU enclosure, and 576 LC fibers in a 4RU enclosure using HDX adapter plates or MTP® cassettes
- Individual sliding trays remove completely to facilitate field terminations
- Sliding tray glides forward, providing accessibility to front and rear bulkheads after installation



## Opt-X® UHD X Flat & Angled Panels

These ultra-high-density 1RU angled and flat panels minimize patching space in a rack or cabinet. The panel allows for easy plug-and-play of pre-terminated solutions and open access to patch cords.

- Capacity for up to 144 LC or 864 fibers (using 12-fiber MTP)
- Flat panel sits flush with the bulkhead for a low profile
- Angled panel eliminates the need for patch cord horizontal cable managers
- Fixed bulkhead shelf minimizes stress on fiber during moves, adds, and changes
- Rear cable manager (sold separately) provides support, routing, and protection



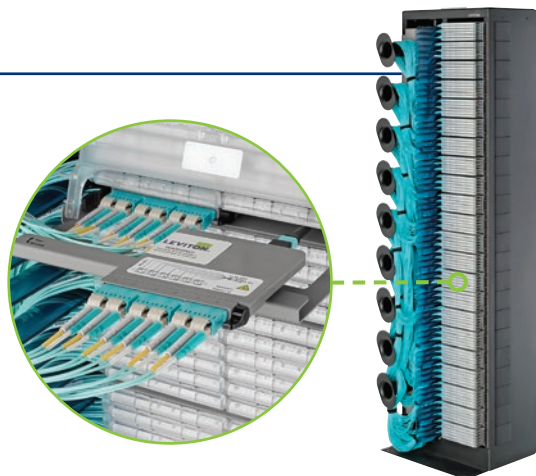
### SPOTLIGHT

#### HDX Fiber Distribution Frame

The HDX Frame is a main cross-connect or interconnect patching frame for all fiber channels in the data center. One frame consolidates patching into an incredibly small footprint, with capacity for up to 3,168 LC fibers, or 7,776 fibers using 12-fiber MTP connections.

The HDX Frame accomplishes such high density through its unique patch deck design. One frame holds 22 decks, each configured with HDX fiber cassettes and adapter plates, or splice trays. And since it occupies only one data center floor tile, it's easier than ever to access space beneath a raised floor.

For more information, please visit [Leviton.com/HDXFrame](http://Leviton.com/HDXFrame).





## HDX Adapter Plates & Cassettes

HDX Adapter Plates and Cassettes work with UHDx Enclosures and Panels, and the HDX Fiber Distribution Frame. They are ideal for data centers or telecommunication rooms with space limitations and growth needs, and can speed deployment and MACs through easy one-hand installation and removal. The HDX platform is recommended for 10 Gb/s or higher applications.



3 Duplex  
MTP Adapter Plate



12F OM3  
LC Adapter Plate

### HDX Adapter Plates

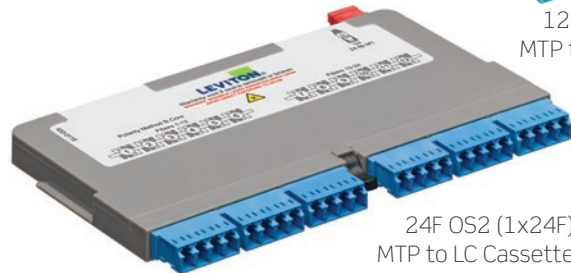
- Connect to field-terminated backbone cabling or pre-terminated trunks
- Easy, one-hand installation and removal
- LC, SC, and MTP® styles in 6, 12, or up to 72/144 fiber configurations
- Visible sequential numbering to identify ports (for Tx and Rx)

### HDX & HDX2 MTP Cassettes

- 12- or 24-fiber MTP configurations
- Select from LC or MTP connectors for 10, 40, or 100 Gb/s applications
- Easy to migrate from 10 to 40/100 Gb/s when used with Opt-X Unity trunks, harnesses, or patch cords
- A variety of fiber types are available including single-mode, multimode, and laser-optimized multimode
- Easy, one-hand installation and removal
- Options for TAP Cassette to monitor network performance



12F OM3 (1x12F)  
MTP to LC Cassette



24F OS2 (1x24F)  
MTP to LC Cassette



40G to 10G, 8F  
MTP to LC Cassette



100G to 40G, 24F OM4 (2x12F)  
MTP to (3x8F) MTP Cassette

### HDX & HDX2 Conversion Cassettes

- Manage polarity to maintain, transmit, and receive connections between parallel optics and SFP connectivity
- Connect to electronics with LC ports and aggregates SFP ports to a QSFP28 or PSM4 (100G), QSFP+ (40G), or CXP (120G) port
- Configure up to 24 fibers for 3 channels (40 Gb/s) per cassette
- Fit in UHDx enclosures and panel
- Snap in and out of enclosure/panel for rapid installation, adds, and changes



## e2XHD Snap-In Cassette Patching System

The e2XHD Fiber and Copper Patching System is an easy-to-connect, high-density solution for applications where fast deployment and simple maintenance are critical. The system includes 1RU universal panels, copper and fiber snap-in cassettes, and accessories for additional cable protection and management.

96

LC Fibers (1RU)



96

LC Fibers (1RU)



### Universal Panels

- Flat and angled panels allow for fiber and copper cabling in the same panel
- 1RU panels hold up to 96 fibers using LC (8 cassettes) or 48 copper ports (8 cassettes)
- Alignment tabs on panels ensure upright insertions of cassettes

### SPOTLIGHT

### e2XHD Copper Cassettes

e2XHD Copper Cassettes accept six UTP or Shielded QuickPort® connectors. The connectors easily snap into the cassette after termination, and can be removed using a QuickPort Connector Removal Tool. An AXT barrier on the cassette reduces alien crosstalk between ports.

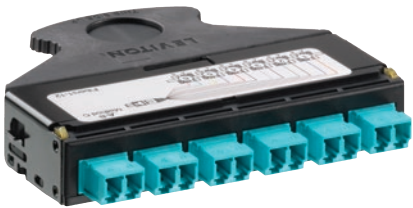






## e2XHD Cassettes

e2XHD fiber and copper cassettes are used exclusively with e2XHD universal panels. They quickly snap in and pull out of the panels, making moves, adds, and changes easier than ever.



12F OM4 MTP to LC Cassette

### Fiber Cassettes

- Allow for a simple migration path to 40 and 100 Gb/s networks with MTP® cassettes
- MTP adapter swivel allows for easy cable routing and proper bend radius
- 12-fiber MTP and LC adapter cassettes use QuickPort® modular fiber adapters which can be removed with a QuickPort removal tool
- 100 to 10 Gb/s and 40 to 10 Gb/s conversion cassettes available



24F OM3 (1x24F) MTP to (3x8F) MTP Cassette



12F OS2 LC to LC Passthrough QuickPort Cassette

e2XHD Fiber Cassettes feature an MTP adapter that swivels to three positions for easier cable routing. Used in conjunction with a rear cable manager and cable management rings, the adapter delivers an ideal solution for eliminating cable tension and ensuring proper bend radius.



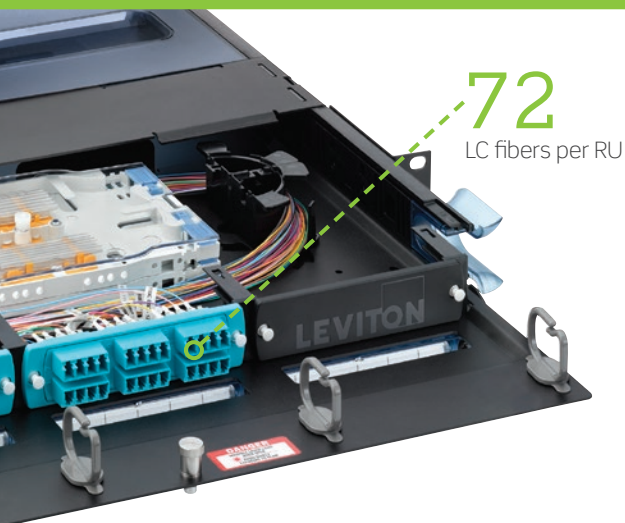
swivel left



center



swivel right



## Opt-X® 2000i SDX Enclosures

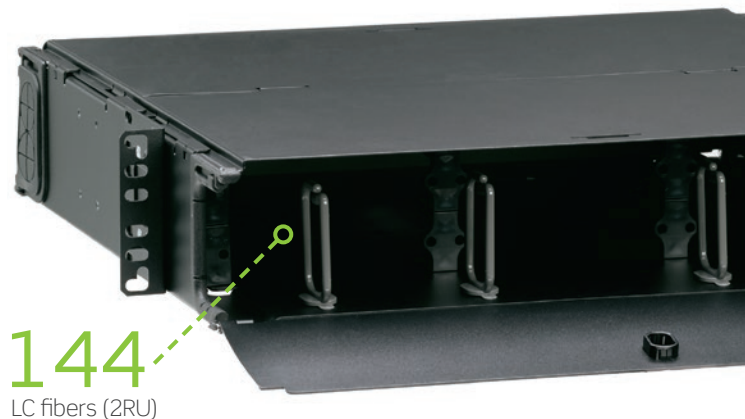
Designed for enterprise and data center applications, the Opt-X 2000i SDX Enclosure combines all our most popular features into one eye-catching platform.

- Up to 72 LC fibers in a 1RU enclosure, 144 LC fibers in a 2RU enclosure, and 288 LC fibers in a 4RU enclosure using SDX adapter plates
- Removable sliding tray releases from front or rear of enclosure to facilitate field terminations and splicing
- 17-inch depth for high-density fiber termination and/or splicing
- Removable, transparent hinged doors and slide-away covers allow easy access and visibility
- Accepts injection-molded splice trays and 4" x 7" metal splice trays

## Opt-X 1000i SDX Enclosures

These durable enclosures allow for easy field termination of connectors, splicing, or patching pre-terminated plug-n-play solutions.

- Up to 72 LC fibers in a 1RU enclosure, 144 LC fibers in a 2RU enclosure, 288 LC fibers in a 3RU enclosure, and 360 LC fibers in a 4RU enclosure using SDX adapter plates
- 15-inch depth for high-density fiber termination and/or splicing
- Removable front and rear covers for better access to interior of enclosure
- Accepts injection-molded splice trays and 4" x 7" metal splice trays



## Opt-X 500i SDX Enclosures

Ideal for small enterprise applications, the economical 500i Rack-Mount Enclosure features a one-piece removable cover for complete accessibility to the back of the enclosure.

- Flush-mount adapter bulkhead for ease of moves, adds, and changes
- Accepts injection-molded splice trays and 4" x 7" metal splice trays
- Flush-mount panels available in 1RU, 2RU, and 3RU sizes
- Optional patch cord management tray installs directly to front of enclosure

## Opt-X 500i SDX Panels

Designed to use minimum rack space in a frame or cabinet, the 500i Panel supports easy field termination and is ideal for small-enterprise applications.

- Flush-mount adapter bulkhead makes moves, adds, and changes easy
- Stackable fiber rings simplify cable routing and organization
- Available in 1RU and 3RU sizes

72  
LC fibers (1RU)





## Opt-X® SDX Wall-Mount Enclosures

Leviton Opt-X SDX Wall-Mount enclosures are a smart choice to deploy in entrance facilities, telecommunications rooms, and remote network hubs that require patching, cross-connect or splicing while using a minimum of space.

- Four sizes available: Versatile patching solution accommodates 24 LC to 288 LC fibers
- Network security: Includes locking doors and dual-door access to separate user and service sides
- Cable and patch cord protection: Easy to dress-out and protect cables and jackets from damage and pinching
- Space savings: Compact zero-RU, wall-mount, and DIN-rail mounting options
- Network consistency: Enclosures accommodate both Leviton SDX and HDX patching platforms
- Field splicing: Includes both splice trays and self-contained splice modules
- Mounting options: Wall-mount, DIN rail, zero-RU, or cubicle wall installations
- Accepts injection-molded splice trays and 4" x 7" metal splice trays



**48**  
LC fibers (small)

## SDX Adapter Plates & Cassettes

SDX cassettes and adapter plates recommended for 1 Gb/s applications or higher and are ideal for infrastructure that requires easier cable management.



12F OM4+ Adapter Plate



24F OM3 and OM4 Adapter Plate

### SDX Adapter Plates

- Unique precision-molded design is eight times stronger than metal adapter plates
- Captive push/pull fasteners for tool-free installation and removal
- Available in 6- to 24-fiber plates for LC, SC, and ST and 72- to 192-fiber plates for MTP®

### SDX MTP Cassettes

- Plug-n-play cassette eliminates the need for field termination or splices
- All cassettes use either 24-fiber or 12-fiber low-loss MTP connectors
- 100% factory tested with test results included with each cassette
- Violet color option available for OM4+
- Allows easy migration from 10 to 40 or 100 Gb/s



24F OM4  
MTP to LC Cassette



12F OM4  
MTP to LC Cassette



## SPOTLIGHT

Migrate to the HDX Platform

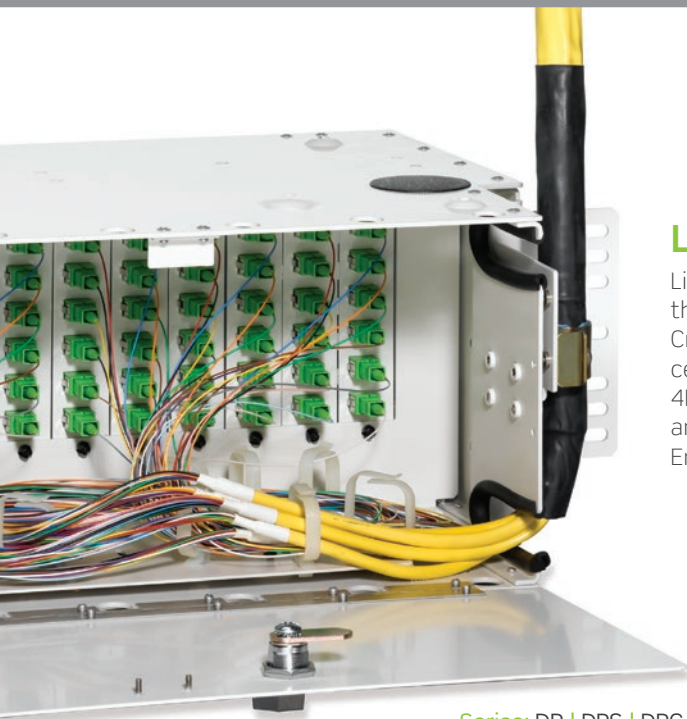


Retrofit Tray



Adapter Bracket

Retrofit Trays are available to upgrade your current 1RU or 2RU Opt-X 2000i SDX or 1000i SDX enclosure to accept high-density HDX cassettes and adapter plates. HDX-to-SDX Adapter Brackets are available to accommodate deployment of HDX cassettes within 2000i SDX, 1000i SDX, 500i SDX, or SDX Wall-Mount enclosures.

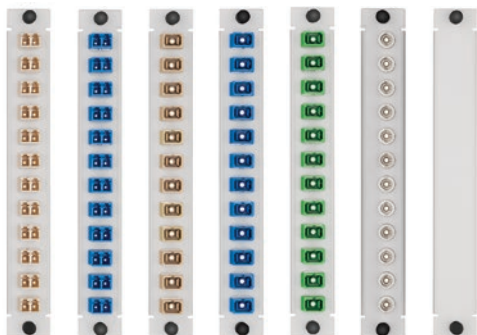
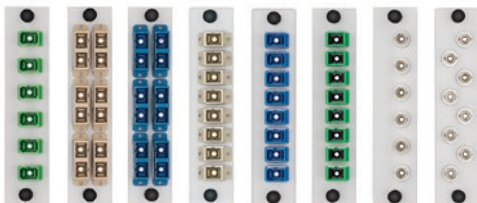
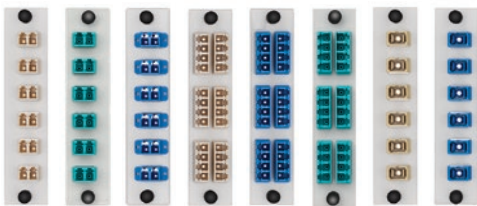


Series: DP | DPS | DPC

## LightSpace® Enclosures

LightSpace Rack-Mount Enclosures are specifically designed to meet the requirements of service providers that follow the legacy Lightguide Cross-Connect (LGX®) fiber distribution frame system guideline. Ideal for central office applications, DP and DPS Enclosures are available in 3RU, 4RU, and 6RU sizes. DPC Series Fiber Termination and Splice Enclosures are “combo” units that feature all the benefits of the DP and DPS Series Enclosures, and are available in 6RU, 7RU, and 8RU.

- Large cable management rings for enhanced jumper routing
- Stackable for customized sizing
- Front cable management saddles
- Side entry for backbone cable
- Mounts on standard 19-inch and 23-inch racks and cabinets

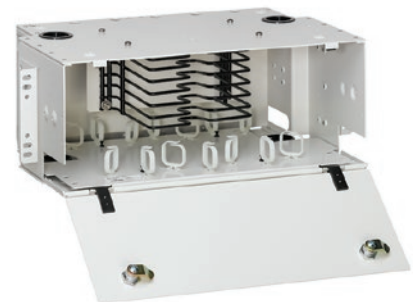


Adapter Plates



DP Optical  
Distribution Enclosure

DPS Optical  
Splice Enclosure



DPC Optical Distribution  
& Splice Enclosure







## Equipment-Specific Solutions

Leviton works closely with the biggest names in active network equipment to create scalable, high-density data center networks. When combined with the latest data center switches from Arista, Brocade, Cisco, and Extreme Networks, Leviton connectivity provides design flexibility for your equipment architecture. These solutions include vertical patching brackets, blade replicators, and replicator enclosures.



Blade Replicators



Brocade 12/24k Replicator 8RU Enclosure,  
96 channel, MTP to LC, OM3



Cisco 9513 Replicator 8RU Enclosure,  
288 channel, MTP to LC, OM3

## Flush-Mount Enclosures & Panels

Leviton high-density Flush-Mount Enclosures and Panels are ideal for data center server, zone, or MDA cabinet applications where space is crucial. These enclosures utilize MTP® connections on the back with choice of fiber connectors on the front, or can be pre-assembled with harnesses. Panels can accommodate up to 576 multimode or single-mode fibers, depending on connector style, and mount on standard 19-inch racks and cabinets.

Sizes: 1RU | 4RU | 6RU | 8RU





## 1 Select Enclosures & Panels

		Maximum Capacity				Part No.	Mission Critical	Enterprise / DC	Service Provider
		Fibers using LC	Adapter Plates pass-through	AND Splice Trays*	OR Cassettes				
1RU	UHDx Enclosure, empty	144	12	—	12	5R1UD-S12	X		
	UHDx Angled Panel, empty	144	12	—	12	HDX1A-144	X		
	UHDx Flat Panel, empty	144	12	—	12	HDX1F-144	X		
	e2XHD Universal Panel, empty, flat	96	8	—	8	E2X1F-S48	X		
	e2XHD Universal Panel, empty, angled	96	8	—	8	E2X1A-S48	X		
	2000i SDX Enclosure, empty, with sliding tray	72	3	3	3	5R1UH-S03		X	
	1000i SDX Enclosure, empty	72	3	3	3	5R1UM-F03		X	
	1000i SDX Enclosure, empty, with sliding tray	72	3	3	3	5R1UM-S03		X	
	500i SDX Panel, empty	72	3		3	5R1UE-0PX		X	
	500i SDX Enclosure, empty, metal cover/door	72	3	3	3	5R1UL-F03		X	
2RU	UHDx Enclosure, empty	288	24	—	24	5R2UD-S24	X		
	2000i SDX Enclosure, empty, sliding tray	144	6	6	6	5R2UH-S06		X	
	1000i SDX Enclosure, empty, metal door	144	6	6	6	5R2UM-F06		X	
	1000i SDX Enclosure, empty, metal door, with sliding tray	144	6	6	6	5R2UM-S06		X	
	500i SDX Enclosure, empty, metal cover/door	144	6	6	6	5R2UL-F06		X	
3RU	1000i SDX Enclosure, empty, metal door (vertical adapter/module)	288	12	12	12	5R3UM-F12		X	
	500i SDX Enclosure, empty, metal cover	288	12	12	12	5R3UL-F12		X	
	500i SDX Panel, empty	288	12	12	12	5R3UE-0PX		X	
	1000i SDX Enclosure, empty, metal door (horizontal adapter/module)	216	9	9	9	5R3UM-F09		X	
	LightSpace® DP-525 Enclosure, empty	144	6	—	—	DP03U-STD			X
	LightSpace DPS-525 Enclosure, empty	—	—	4		DPS3U-STD			X
4RU	UHDx Enclosure, empty	576	48	—	48	5R4UD-S48	X		
	1000i SDX Enclosure, empty, metal door (horizontal adapter/module)	360	15	15	15	5R4UM-F15		X	
	2000i SDX Enclosure	360	12	12	12	5R4UH-S12		X	
	1000i SDX Enclosure, empty, metal door (vertical adapter/module)	288	12	12	12	5R4UM-F12		X	
	LightSpace DP-700 Enclosure, empty	288	12	—	—	DP04U-STD			X
	LightSpace DPS-700 Enclosure, empty		—	6	—	DPS4U-STD			X
6RU	LightSpace DP-105 Enclosure, empty	288	12	—	—	DP06U-STD		X	
	LightSpace DPS-105 Enclosure, empty	—	—	12	—	DPS6U-STD			X
	LightSpace DPC-525 Enclosure, empty	144	6	4	—	DPC6U-033			X
7RU	LightSpace DPC-752 Enclosure, empty	288	12	4	—	DPC7U-043			X
8RU	LightSpace DPC-700 Enclosure, empty	288	12	6	—	DPC8U-STD			X
WALL MOUNT	Mini SDX Enclosure, empty with dual door, no lock	24	1	—	1	5WMNT-01C^		X	
	Small SDX Enclosure, empty with dual door, no lock	48	2	2	2	5WSML-02C^		X	
	Medium Enclosure, empty with dual door, no lock	96	4	4	4	5WMED-04C^		X	
	Large Enclosure, empty with dual door, no lock	288	12	12	12	5WLRG-12C^		X	

\* = Max splice tray capacity is dependent on height of splice tray. See page 15.

^ = Contact Inside Sales for white colored option. Minimum order quantities and lead time may apply.

## 2 Select Enclosure Accessories

			UHD	e2XHD	2000i SDX	1000i SDX	500i SDX	SDX Wall Mount	LightSpace®
Fan-Out Kit	24" Fiber Optic Fan-out Kit, 6-fiber	49887-06S			X	X	X	X	X
	24" Fiber Optic Fan-out Kit, 12-fiber	49887-12S			X	X	X	X	X
	36" Fiber Optic Fan-out Kit, 6-fiber	49887-06L			X	X	X	X	X
	36" Fiber Optic Fan-Out Kit, 12-fiber	49887-12L			X	X	X	X	X
Fiber Rings	Fiber Cable Management ¼ Ring Kit	5R100-14R		X	X	X	X		
Cable Clamp Kit	Enclosure-mount Universal Clamp Kit (single cable grommet)	5RCMP-KIT	X	X	X	X	X	X	
	Enclosure-mount Universal Clamp Kit (multiple cable grommet)	5RCMP-KT2	X	X	X	X	X	X	
	Rack-mount Universal Clamp Kit (single and multiple cable grommet)	5RCMR-KIT	X	X	X	X	X		X
	DP/DPS/DPC Series Cable Clamp Kit (.25" - 1.25" Ø cable)	DPCMP-UNV							X
Grounding Kit	Universal Grounding Kit	DPGRD-KIT	X	X	X	X	X	X	X
Locks & Keys	DP/DPS/DPC Series Lock and Key	DPLOK-KIT							X
	SDX Series Lock and Key	5L000-KAL				X		X	
Mounting Options	HDX-to-SDX Adapter Bracket	HDXAD-ACC			X	X	X	X	
	DIN Rail Bracket Kit (for mini enclosure only)	DNRAL-ACC						X	
	0RU Mounting Bracket, bag of 2 (for mini enclosure only)	5WMNB-ACC						X	
e2XHD	e2XHD Rear Cable Manager for Angled Panel, with cable management rings	E2XHD-CMB	X	X					
	e2XHD Rear Cable Manager for Flat Panel, with cable management rings	E2XIF-CMB		X					
Patch Cord Cable Managers	0RU Flush-Mount Enclosure Panel Patch Cord Managers, bag of 2	5RCMT-VFG	X*	X	X	X	X		X
	1RU Enclosure and Panel Patch Cord Management Tray	5R1UX-CMT	X*	X*			X		
	2RU Enclosure and Panel Patch Cord Management Tray	5R2UX-CMT	X*	X*			X		

\* = Use with flat panel

## 3 Select Adapter Plates

	HDX^	SDX*	LightSpace®**
12	12-fiber, OM1 & OM2, quad LC (beige), phosphor bronze sleeve	5FUHD-2IL	APLW6-LDM
	12-fiber, OM3 & OM4, quad LC (aqua), zirconia ceramic sleeve	5FUHD-2QL	APLW6-LDL
	12-fiber, OM4+, quad LC (violet), zirconia ceramic sleeve	5FUHD-2PL	
	12-fiber, OS2, quad LC (blue), zirconia ceramic sleeve	5FUHD-2LL	APLW6-LDS
	12-fiber, OS2, quad LC/APC (green), zirconia ceramic sleeve	5FUHD-2VL	
	12-fiber, OM1, duplex LC, 62.5 µm (beige), zirconia ceramic sleeve		5F100-2IL
	12-fiber, OM2, duplex LC, 50 µm (black), zirconia ceramic sleeve		5F100-2EL
	12-fiber, OM3 & OM4, duplex LC, 50 µm (aqua), zirconia ceramic sleeve		5F100-2QL
	12-fiber, OM4+, duplex LC, 50 µm (violet), zirconia ceramic sleeve		5F100-2PL
	12-fiber, OS2, duplex LC (blue), zirconia ceramic sleeve		5F100-2LL
	12-fiber, OS2, duplex LC/APC (green), zirconia ceramic sleeve		5F100-2VL
	24-fiber, OM1, quad LC, 62.5 µm (beige), zirconia ceramic sleeve		5F100-4IL
	24-fiber, OM2, quad LC, 50 µm (black), zirconia ceramic sleeve		5F100-4EL
	24-fiber, OM3 & OM4, quad LC, 50 µm (aqua), zirconia ceramic sleeve		5F100-4QL
	24-fiber, OM4+ duplex LC, 50 µm (violet), zirconia ceramic sleeve		5F100-4PL
	24-fiber, OS2, quad LC (blue), zirconia ceramic sleeve		5F100-4LL
	24-fiber, OM1 & OM2, quad LC (beige), phosphor bronze sleeve		APLW6-LQM
	24-fiber, OM1 & OM2, duplex LC (aqua), zirconia ceramic sleeve		APLW6-LQL
	24-fiber, OS2, duplex LC (blue), zirconia ceramic sleeve		APLW6-LQS

Additional configurations available. Contact inside sales at 800.722.2082.

^ = HDX fits all Opt-X UHD / HDX enclosures and panels and HDX Frame patch decks

\* = SDX fits all Opt-X 2000i, 1000i, and 500i SDX enclosures and panels.

\*\* = LightSpace (LGX Footprint) fits all LightSpace enclosures.

continued...

## 3 Select Adapter Plates (continued)

		HDX <sup>^</sup>	SDX <sup>*</sup>	LightSpace <sup>®***</sup>
SC	6-fiber, OM1 & OM2, duplex SC (beige), phosphor bronze sleeve	5FUHD-6IC		APLW6-SCM
	6-fiber, OM3 & OM4, duplex SC (aqua), zirconia ceramic sleeve	5FUHD-6QC		
	6-fiber, OS2, duplex SC (blue), zirconia ceramic sleeve	5FUHD-6LC		APLW6-SCS
	6-fiber, OM1, duplex SC, 62.5 µm MM (beige), zirconia ceramic sleeve		5F100-6IC	
	6-fiber, OM2, duplex SC, 50 µm MM (black), zirconia ceramic sleeve		5F100-6EC	
	6-fiber, OM3 & OM4, duplex SC, 50 µm MM (aqua), zirconia ceramic sleeve		5F100-6QC	
	6-fiber, OS2, duplex SC, SM (blue), zirconia ceramic sleeve		5F100-6LC	
	6-fiber, OS2, duplex SC/APC, SM (green), zirconia ceramic sleeve		5F100-6VC	
	12-fiber, OM1, duplex SC, 62.5 µm MM (beige), zirconia ceramic sleeve		5F100-2IC	
	12-fiber, OM2, duplex SC, 50 µm MM (black), zirconia ceramic sleeve		5F100-2EC	
	12-fiber, OM3 & OM4, duplex SC, 50 µm LOMM (aqua), zirconia ceramic sleeve		5F100-2QC	
	12-fiber, OS2, duplex SC, (blue), zirconia ceramic sleeve		5F100-2LC	
	12-fiber, OS2, duplex SC/APC, (green), zirconia ceramic sleeve		5F100-2VC	
	6-fiber, OS2, SC/APC, (green), zirconia ceramic sleeve			APLW6-SCA
	12-fiber, OM1 & OM2, duplex SC, (beige), phosphor bronze sleeve			APLW6-SDM
	8-fiber, OM1 & OM2, SC, (beige), phosphor bronze sleeve			APLW8-SCM
	8-fiber, OS2, SC, (blue), zirconia ceramic sleeve			APLW8-SCS
	8-fiber, OS2, SC/APC, (green), zirconia ceramic sleeve			APLW8-SCA
	12-fiber, OS2, SC, (blue), zirconia ceramic sleeve			APLW6-SDS
	12-fiber, OS2, SC/APC, (green), zirconia ceramic sleeve			APLW6-SDA
ST	6-fiber, ST, MM, SM, (black), zirconia ceramic sleeve		5F100-6MT	
	8-fiber, ST, MM, SM, (black), zirconia ceramic sleeve		5F100-8MT	
	6-fiber, OM1 & OM2, ST, phosphor bronze sleeve			APLW6-STM
	6-fiber, OS2, ST, zirconia ceramic sleeve			APLW6-STs
	8-fiber, OM1 & OM2, ST, phosphor bronze sleeve			APLW8-STM
	8-fiber, OS2, ST, zirconia ceramic sleeve			APLW8-STs
MTP <sup>®</sup>	6-position MTP, key up/key up	5FUHD-6MB	5F100-6MB	
	6-position MTP, key up/key down	5FUHD-6MP	5F100-6MP	APLW6-6MP
	8-position MTP, key up/key down		5F100-8MP	
	8-position MTP, key up/key up		5F100-8MB	
Blanks	Blank	5FUHD-BLK	5F100-PLT	APLW6-BLK
	6-pk QuickPort <sup>®</sup> , empty		5F100-6QP	APLW6-6QP

Additional configurations available. Contact inside sales at 800.722.2082.

\* = SDX fits all Opt-X 2000i, 1000i, and 500i SDX enclosures and panels.

<sup>^</sup> = HDX fits all Opt-X UHDX / HDX enclosures and panels and HDX Frame patch decks

\*\* = LightSpace (LGX Footprint) fits all LightSpace enclosures.

## OR Select MTP<sup>®</sup> Cassettes

	HDX <sup>^</sup> fits HDX Frame and UHDX Enclosures and Panels	SDX fits 2000i, 1000i, and 500i Enclosures and Panels	e2XHD fits e2XHD panels
MTP Cassette, 12-fiber MTP-LC, OM3	31LM1-xxN	FM-E012CAC0*	FME2XHD-E012CKQD*
MTP Cassette, 24-fiber 1x24F MTP-LC, OM3	32LM2-xxN	FM-E024CDC0*	FME2XHD-E024CHQE*
MTP Cassette, 24-fiber, 2x12F MTP - 3x8F MTP, OM3	32MM1-xxN	FM-E024NCC0°	FME2XHD-E024MKKE°
MTP Cassette, 24-fiber, 1x24F MTP - 3x8F MTP, OM3	32MM2-xxN	FM-E024NDC0°	FME2XHD-E024MHKD°
MTP Cassette, 48-fiber, 2x24F MTP - 6x8F MTP, OM3	34MM2-xxN	FM-E048NDC0°	

OS2, OM1, OM2, OM4, and OM4+ fiber types available, as well as additional configurations. Contact inside sales or visit [Leviton.com/configurator](http://Leviton.com/configurator).

xx = Polarity: AN = Method A, CN = Method C, BC = Method B (core), BE = Method B (edge)

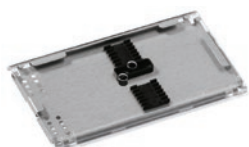
\* = Polarity: A = Method A, C = Method C, BC = Method B (core), BE = Method B (edge)

Note: For Method B, each channel must have 1 core and 1 edge cassette.

° = Polarity: BC = Method B (core), BE = Method B (edge)



## 4 Select Splice Trays / Modules



		2000i SDX	1000i SDX	500i SDX	SDX Wall Mount	LightSpace DPS	LightSpace DPC
<b>Metal Splice Tray, Heat Shrink (plastic)</b>							
12-Fiber Mini, 4" x 7" x 0.35"	T47HS-P06	X	X	X	X	X	X
12-Fiber Mini, with standoff, 4" x 7" x 0.57"	5T000-00T	X	X	X	X		
24-Fiber High-Density, 5" x 11.75" x 0.35"	T5LHS-B12					X	X
<b>Precision-Molded Splice Trays, Heat Shrink (plastic)</b>							
12-Fiber Mini, 3.74" x 5.59" x 0.56" (14 Heat shrink splice sleeves included)	T5PLS-12F	X	X	X	X		
24-Fiber High-Density, 4.5" x 7.63" x 0.50" (26 Heat shrink splice sleeves included)	T5PLS-24F	X	X	X	X		
<b>Ribbon Style Splice Tray, Heat Shrink (plastic)</b>							
72-Fiber Ribbon Style, quartz, 5" x 10" x 0.35"	T6XRB-40Q				X	X	X
<b>SDX 12- &amp; 24-Fiber Splice Modules</b>							
SDX 12-Fiber LC Splice Module	SPLCS-12x	X	X	X	X		
SDX 24-Fiber LC Splice Module	SPLCS-24x	X	X	X	X		
SDX 12-Fiber SC Splice Module	SPSCS-12x	X	X	X	X		

x = OM3 (A), OM4 (4), OS2 (L), APC OS2 (V)

## 5 Select Connectors



	62.5/125µm Multimode	50/125µm Multimode	50/125µm Laser Opt. Multimode	Single-Mode	APC Single-Mode
<b>Fast-Cure® Anaerobic Adhesive</b>					
LC (with 2 - 3 mm boot)	49990-ML2	49990-ML2	49990-LL2	49990-SL2	
LC (with 0.9 mm boot)	49990-MDL	49990-MDL	49990-LDL	49990-SDL	
SC	49990-MSC	49990-MSC	49990-LSC	49990-SSC	
ST	49990-MST	49990-MST		49990-SST	
<b>FastCAM® Pre-Polished</b>					
LC*	49991-MLC	49991-5LC	49991-LLC	49991-SLC	
SC*	49991-MSC	49991-5SC	49991-LSC	49991-SSC	49991-ASC**
ST*	49991-MST	49991-5ST		49991-SST	

\*\* = Termination of angled pre-polished connectors requires a precision angled cleaver

\* = Termination of pre-polished connectors requires a precision cleaver

We invent and manufacture the industry's best cabling and connectivity. We build them to last. And we stand behind every product and end-to-end system — delivering the highest performance and unbeatable service and support — throughout the life of your network. Add the peace of mind that comes from working with a stable, century-old supplier, and you get the **highest return on infrastructure investment.**

#### NETWORK SOLUTIONS DIVISION HEADQUARTERS

2222 - 222nd Street S.E., Bothell, WA 98021 USA | [leviton.com/ns](http://leviton.com/ns)

**Inside Sales** ..... (800) 722 2082 ..... [insidesales@leviton.com](mailto:insidesales@leviton.com)

**International Inside Sales** ..... +1 (425) 486 2222 ..... [intl@leviton.com](mailto:intl@leviton.com)

**Technical Support** ..... (800) 824 3005 / +1 (425) 486 2222 ..... [appeng@leviton.com](mailto:appeng@leviton.com)

#### EUROPEAN HEADQUARTERS

Viewfield Industrial Estate, Glenrothes, Fife, KY6 2RS, UK | [brand-rex.com](http://brand-rex.com)

Brand-Rex Limited is a subsidiary of Leviton Mfg. Co., Inc

**Customer Service** ..... +44 (0) 1592 772124 ..... [customerserviceeu@leviton.com](mailto:customerserviceeu@leviton.com)

#### MIDDLE EAST HEADQUARTERS

Bay Square, Building 3, Office 205, Business Bay, Dubai - UAE | [leviton.com/ns/middleeast](http://leviton.com/ns/middleeast)

**Customer Service** ..... +971 (4) 886 4722 / +971 (4) 454 8644 ..... [lmefinfo@leviton.com](mailto:lmefinfo@leviton.com)

#### CORPORATE HEADQUARTERS

201 N. Service Road, Melville, NY 11747 USA | [leviton.com](http://leviton.com)

**Customer Service** ..... (800) 323 8920 / +1 (631) 812 6000 ..... [customerservice@leviton.com](mailto:customerservice@leviton.com)

#### ADDITIONAL OFFICES

**Africa** ..... +971 (4) 886 4722 ..... [lmefinfo@leviton.com](mailto:lmefinfo@leviton.com)

**Asia / Pacific** ..... +1 (631) 812 6228 ..... [infoasean@leviton.com](mailto:infoasean@leviton.com)

**Canada** ..... +1 (514) 954 1840 ..... [pcservice@leviton.com](mailto:pcservice@leviton.com)

**Caribbean** ..... +1 (954) 593 1896 ..... [infocaribbean@leviton.com](mailto:infocaribbean@leviton.com)

**China** ..... +852 2774 9876 ..... [infochina@leviton.com](mailto:infochina@leviton.com)

**Colombia** ..... +57 (1) 743 6045 ..... [infocolombia@leviton.com](mailto:infocolombia@leviton.com)

**Latin America & Mexico** ..... +52 (55) 5082 1040 ..... [lsamarketing@leviton.com](mailto:lsamarketing@leviton.com)

**South Korea** ..... +82 (2) 3273 9963 ..... [infokorea@leviton.com](mailto:infokorea@leviton.com)

**ALL OTHER INTERNATIONAL INQUIRIES** ..... [international@leviton.com](mailto:international@leviton.com)

