



1910-2010
Celebrating
100
Years
of Cable Solutions & Innovations



Optical Fiber Cable Catalog



Draka™

Draka Communications - Americas



I N N O V A T I O N

Value Innovation is a way of looking at the world. How can we help our customers do more, make more, save more, achieve more? Draka is a global leader in delivering advanced cable and network solutions. Focusing on the passive elements of the network, our goal is to deliver superior cable solutions that meet your current and future network requirements, based on more bandwidth, longer life and absolute reliability.



Draka™

Draka Communications - Americas



INNOVATION

Value Innovation
for your Next
Generation Access
Network

Draka Communications Company Overview.....	4
Indoor, Indoor-Outdoor and Specialty Cable	5-14
Indoor Cable	
ezDISTRIBUTION™ Tight Buffered Cable	
ezBREAKOUT™ Cable	
ezINTERCONNECT™ & MDU Cable	
ezRIBBON™ Riser Ribbon Cable	
Interlock Armor Cable	
Indoor-Outdoor Cable	
ezDISTRIBUTION™ Tight Buffered Cable	
MDU Cable	
Interlock Armor Cable	
ezRIBBON Riser Ribbon Cable	
ezPREP® Loose Tube Cable	
Low Smoke Zero Halogen (LSZH) Cable	
Specialty Cable	
Nuclear Cable	
ezPREP Loose Tube Harsh Environment Cable	
Mining Cable	
Connectorized Cable.....	15-18
ezPATCH™ Connectorized Cable	
ezDROP™ Connectorized Cable	
Multi-fiber Connectorized Cable	
CATV Connectorized Node Cable	
MDU Connectorized Drop	
Outdoor Cable.....	19-24
ezPREP Gel and Gel-Free Loose Tube Cable	
ezRIBBON Gel and Gel-Free Cable	
ezMICROUNITUBE™ Cable	
ezDROP Flat, Figure 8, Ribbon Cable	
ezMICRODUCT™ Cable	
ezTOOLS™ Midspan Access Tool	
ezSPAN® ADSS Cable	
ezPREP Loose Tube Figure 8 Cable	
Optical Fiber Types.....	25-28
Singlemode Fibers ESMF, BendBright®, BendBright-XS®, Terelight®, NZDSF-LA, Longline	
Multimode Fibers MaxCap® Standard	
Specialty Fibers Draka Elite	
Resources	29-38
Reel Selection Chart Flame Rated Distribution & Interconnect Cables	
Reel Selection Chart Non-Returnable Reels in English & Metric Units	
Reel Selection Chart Returnable Reels in English & Metric Units	
Fiber Optic Cable Questionnaire & Pre-Order Guide	
Fiber Optic Color Code Guide & Multimode Fiber Specifications	



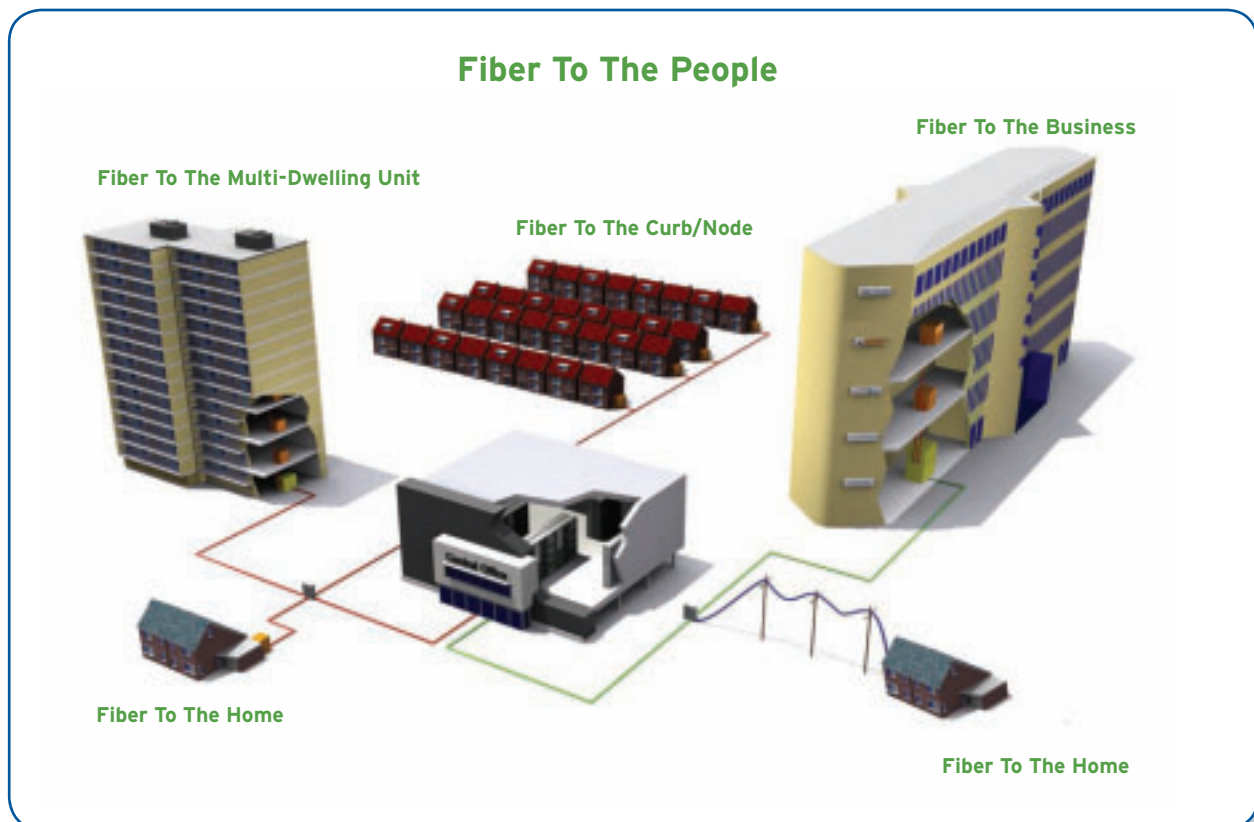
Products

Draka Communications offers a complete family of outdoor, indoor and specialty fiber cabling that allows network operators, installers and enterprises to simply and cost-effectively deploy fiber infrastructure. These cables are available with a complete line of singlemode, multimode and specialty fibers to fit virtually any application while supporting scalable bandwidth and next generation broadband transmission. Cables are available with or without factory installed connectors.

Markets Served

Network operators, installers and enterprises benefit from Draka's ability to help companies deploy reliable broadband fiber infrastructure at the lowest installed cost making fiber-rich architectures cost-competitive with traditional network infrastructure. Some of the markets where Draka Communications cabling is deployed include:

- [+] Telecommunications carriers
- [+] CATV and video operators
- [+] Utilities
- [+] Enterprises
- [+] Government agencies & municipalities (federal, state, and local)
- [+] Data centers



Indoor Indoor-Outdoor Specialty Cable





Value Innovation For Your Next Generation Access Network

Draka Fiber Optic Premise Designs for Indoor & Indoor-Outdoor Applications

[+] Indoor - riser, plenum and low smoke cables in tight buffer distribution, breakout and cordage designs

[+] Indoor-Outdoor - flame retardant, robust & versatile

[+] Specialty - unique cable designed for demanding applications like mines, airports, petrochemical and powerplants

With an installed base of 25 million miles of fiber cable already deployed in North America, Draka fiber cable can be found in a wide variety of private network applications such as business data centers, schools, transportation systems, hospitals, wind farms and a multitude of other environments. We know your challenges of working in crowded buildings, tight spaces, meeting building codes, deadlines & working with other obstacles. Draka understands the importance of deploying cable that can work within these conditions while keeping a network up, safe & on-target. Our premise cables are engineered with excellent mechanical and optical performance while also meeting all critical NEC requirements for riser or plenum applications.

Indoor & Indoor-Outdoor Cable Designs

ezDISTRIBUTION™ cables package up to 144 color-coded 900µm tight buffered fibers into a single flame-retardant cable that provides easy installation and direct termination for intrabuilding and indoor applications.

Our robust indoor ezBREAKOUT™ cable provides simple direct field termination and ezINTERCONNECT™ simplex & duplex cables feature an easily strippable fiber coating making end preparation and termination in a wide variety of environments easier.

The flame retardant ezPREP® loose tube cable series is offered in both gel-filled and gel-free loose tubes for ease of installation. These cables offer a tighter packing density for higher fiber counts in variety of sheath options including corrugated steel tape for rodent protection as well as double jackets.

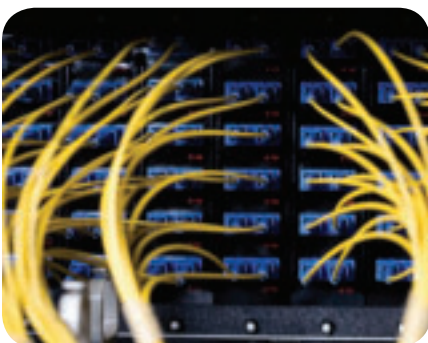
Perfect for riser shafts in buildings and multi-dwelling units, our ezRIBBON™ cables combine robust performance with the greater productivity of mass fusion splicing.

Interlock Armoring can be applied to any indoor cable for protective crush resistance & fire safety. These cables also eliminate the need for conduit - providing quick one-step economical installation.

Specialty Cable Designs

Draka's Harsh Environment chemical-resistant cables stand up to stringent environmental conditions with double jacketed versions offering increased crush resistance. These cables combine flexible tubes, swellable dry water-blocking, and Draka's exclusive ColorLock® fiber coating for the easiest loose tube cables to access and prep. Draka's chemical resistant cables provide protection against many commercial and industrial solvents.

Draka premise fiber optic cables meet or exceed performance standards as established by TIA/EIA 568B, ICEA S-83-596, ICEA S-104-696, Telcordia GR-409 and are RoHS compliant.



ezDISTRIBUTION™ | Tight Buffered Cable



Refer to the data sheets on www.drakaamericas.com

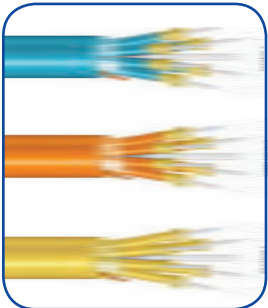
Specifications

Applications	Versatile Intrabuilding & Indoor Cabling
Constructions	900µm Tight Buffered Color-Coded Fibers / Dielectric & Interlock Armor
Fiber Count	2 to 144 Fibers
Fiber Types	Singlemode, Multimode and Specialty Fiber <i>(For Specifications see page 27)</i>
Options	Preconnectorization
Performance	TIA/EIA-568B, ICEA S-83-596, GR-409, RoHS Compliant Riser rated per UL1666, FT--4 per CSA 22.2 No. 232 Plenum rated per NFPA-262, FT-6 per CSA 22.2 No. 232

Order Information

	Riser / FT-4	Plenum / FT-6	Riser / FT-4
Indoor	400 Series	800 Series	LSZH Series

ezBREAKOUT™ | Cable



Refer to the data sheets on www.drakaamericas.com

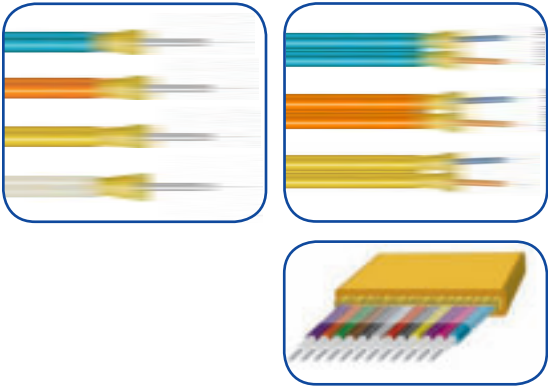
Specifications

Applications	Robust Multi-fiber Indoor Breakout, Routing & Connectorization
Constructions	Jacketed Cordage (1.6 or 2.5mm units) / Dielectric & Interlock Armor
Fiber Count	2 to 24 Fibers
Fiber Types	Singlemode, Multimode and Specialty Fiber <i>(For Specifications see page 27)</i>
Options	Preconnectorization; 1.6 or 2.5mm Units
Performance	TIA/EIA-568B, ICEA 83-596, GR-409, RoHS Compliant Riser rated per UL1666, FT--4 per CSA 22.2 No. 232 Plenum rated per NFPA-262, FT-6 per CSA 22.2 No. 232

Order Information

	Riser / FT-4	Plenum / FT-6	Riser / FT-4
Indoor 1.6mm	516 Series		
Indoor 2.5mm	525 Series	825 Series	LSZH25 Series

ezINTERCONNECT™ & MDU Cable



Specifications

Applications	Simple Fiber Patching, Routing & Connectorization in Simplex, Duplex & 12 fiber ribbon
Constructions	Simplex, Zipcord & Duplex Cordage Options / 1.6, 2.0, 2.9, 4.8mm Options & 12 fiber ribbon
Fiber Count	1 to 2 Fibers: 1 Fiber Simplex, 2 Fiber Zipcord, 12 Fiber ribbon
Fiber Types	Singlemode, Multimode and Specialty Fiber (<i>For Specifications see page 27</i>)
Options	Preconnectorized Assemblies (SC, LC, FC, ST & Others)
Performance	TIA/EIA-568B, ICEA 83-596, GR-409, RoHS Compliant Riser rated per UL1666, FT--4 per CSA 22.2 No. 232 Plenum rated per NFPA-262, FT-6 per CSA 22.2 No. 232

Order Information

	Riser / FT-4	Plenum / FT-6	Riser / FT-4
Indoor 1.6mm	516 Series	816 Series	LSZH16 Series
Indoor 2.0mm	520 Series	820 Series	LSZH20 Series
Indoor 2.9mm	529 Series	829 Series	LSZH29 Series
Indoor 12 fiber Ribbon		FRP Series	
Indoor MDU 2.9 mm	MDUI829 (Ivory Jkt)		
Indoor MDU 4.8 mm	MDUI548 (Ivory Jkt)		
Indoor MDU 4.8 mm	MDUW548 (White Jkt)		
Indoor MDU 4.8 mm	MDUY548 (Yellow Jkt)		

ezRIBBON™ | Riser Ribbon Cable



Perfect for vertical and horizontal cable runs within a building.

Specifications

Applications	Building and Multi-Dwelling Unit (MDU) Applications Where Ribbonized Fiber is Desired. Perfect for Riser Shafts and Other Horizontal Runs.
Constructions	Indoor and Indoor-Outdoor Designs Available. Dielectric, Central Tube 12 Fiber Ribbons. Gel Free (Dry) Tube
Fiber Count	12-216 Fibers with ColorLock-XS® Fiber Color & Coating System. 12 Fiber Ribbons - Each Ribbon Individually Printed for Easy Identification.
Fiber Types	Singlemode and Multimode (<i>For Specifications see page 27</i>)
Options	Indoor / Indoor-Outdoor Construction. Preconnectorized Options Available.
Performance	TIA/EIA-568B, ICEA 83-596, ICEA S-104-696, Telcordia GR-409, RoHS Compliant Riser rated per UL1666, FT--4 per CSA 22.2 No. 232

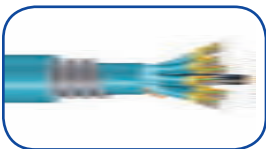
Order Information

Indoor	Riser / FT-4 rated CRRY
--------	----------------------------

Interlock Armor Cable



Eliminates the need for duct or conduit & can be used in riser, wiring closet, ceiling, tray or duct.



Specifications

Applications	Indoor Protective Crush Resistance & Fire Safety / Eliminates Need for Conduit
Constructions	Interlock Aluminum or Optional Steel Armoring
Fiber Count	2 to 288 Fibers (<i>Dependent on Cable Type</i>)
Fiber Types	Singlemode, Multimode and Specialty Fiber (<i>For Specifications see page 27</i>)
Options	Color-Coded Jacket, Aluminum or Steel Armoring Stripe /No Outer Jacket Over Armor
Performance	TIA/EIA-568B, ICEA 83-596, Telcordia GR-409, RoHS Compliant Riser rated per UL1666, FT--4 per CSA 22.2 No. 232 Plenum rated per NFPA-262, FT-6 per CSA 22.2 No. 232

Order Information

	Riser / FT-4	Plenum / FT-6	Riser / FT-4
Indoor			
ezDISTRIBUTION, Jacketed	400AJ	800AJ	LSZH AJ
ezDISTRIBUTION, Unjacketed	400AB	800AB	LSZH AB

Indoor-Outdoor Cable

ezDISTRIBUTION™ | Tight Buffered Cable



Refer to the data sheets on www.drakaamericas.com

Specifications

Applications Versatile Intrabuilding & Indoor - Outdoor Cabling
Constructions 900µm Tight Buffered Color-Coded Fibers / Dielectric & Interlock Armor
Fiber Count 2 to 144 Fibers
Fiber Types Singlemode, Multimode and Specialty Fiber (*For Specifications see page 27*)
Options Preconnectorization & Specialty Designs (Mining, Remote/Tactical Deployment)
Performance TIA/EIA-568B, ICEA 83-596, GR-409, RoHS Compliant
 Riser rated per UL1666, FT--4 per CSA 22.2 No. 232
 Plenum rated per NFPA-262, FT-6 per CSA 22.2 No. 232

Order Information

Indoor-Outdoor	Riser / FT-4 C1181 Series	Plenum / FT-6 C1182 Series
----------------	-------------------------------------	--------------------------------------

MDU Cable



Use where tight bends and staples are used.

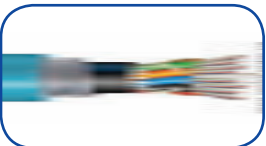
Specifications

Applications Apartments, Condominiums, High-rise and Business Retail centers
Constructions Indoor-Outdoor
Fiber Count 1 Fiber
Fiber Types BendBright-XS & BendBright-Elite (*For Specifications see page 27*)
Options With or without factory installed connectors, or Hardened Lens Connector (HLC)[®] Scratchquard[®] technology
Performance G.657 A&B, GR-409, ICEA S-83-596, RoHS Compliant
 Riser rated per UL1666, FT--4 per CSA 22.2 No. 232

Order Information

Indoor-Outdoor	Riser / FT-4 MDU548
----------------	-------------------------------

Interlock Armor Cable



Eliminates the need for duct or conduit & can be used in riser, wiring closet, ceiling, tray, duct or buried spaces.

Specifications

Applications Indoor Protective Crush Resistance & Fire Safety / Eliminates Need for Conduit
Constructions Interlock Aluminum or Optional Steel Armoring
Fiber Count 2 to 288 Fibers (*Dependent on Cable Type*)
Fiber Types Singlemode, Multimode and Specialty Fiber (*For Specifications see page 27*)
Options Color-Coded Jacket, Aluminum or Steel Armoring (*Colored Jackets available for indoor use*)
 Stripe /No Outer Jacket Over Armor
Performance TIA/EIA-568B, ICEA S-83-596 & S-104-696, Telcordia GR-409, RoHS Compliant
 Riser rated per UL1666, FT--4 per CSA 22.2 No. 232
 Plenum rated per NFPA-262, FT-6 per CSA 22.2 No. 232

Order Information

	Riser / FT-4	Plenum / FT-6	Riser / FT-4
Indoor / Outdoor			
ezDISTRIBUTION	C1181AJ	C1182AJ	
ezDISTRIBUTION	C1181AB	C1182AB	
ezPREP Loose Tube, Jacketed	DRLTBAJ	DPLDBAJ	DLSZHBAJ
ezPREP Loose Tube, Unjacketed	DRLDBAB	DPLDBAB	DLSZHBAB

Indoor-Outdoor Cable

ezRIBBON™ | Riser Ribbon Cable



Perfect for vertical and horizontal cable runs within a building.

Specifications

Applications Building and Multi-Dwelling Unit (MDU) Applications Where Ribbonized Fiber is Desired. Perfect for Riser Shafts and Other Horizontal Runs.

Constructions Indoor and Indoor-Outdoor Designs Available. Dielectric, Central Tube 12 Fiber Ribbons. Gel Free (Dry) Tube

Fiber Count 12-216 Fibers with ColorLock-XS® Fiber Color & Coating System. 12 Fiber Ribbons - Each Ribbon Individually Printed for Easy Identification.

Fiber Types Singlemode and Multimode (*For Specifications see page 27*)

Options Indoor / Indoor-Outdoor Construction. Preconnectorized Options Available.

Performance TIA/EIA-568B, ICEA 83-596, Telcordia GR-409, ICEA S-104-696, RoHS Compliant Riser rated per UL1666, FT-4 per CSA 22.2 No. 232

Order Information

Indoor-Outdoor

Riser / FT-4 rated
CRR

ezPREP® | Loose Tube Cable



Common intrabuilding & transition cable - OSP robustness with indoor flame ratings.

Specifications

Applications Versatile, Multi-Purpose Indoor - Outdoor for Easy & Economical Transition

Constructions Dielectric, Armored & Interlocked Armor Versions

Fiber Count 2 to 288 Fibers

Fiber Types Singlemode, Multimode and Specialty Fiber (*For Specifications see page 27*)

Options Gel-Free, Preconnectorization & Armored, Dual Jackets (*Central Loose Tube available in fiber counts of 6 & 12*)

Performance TIA/EIA-568B, ICEA 83-596, GR-20, ICEA S-104-696, RoHS Compliant Riser rated per UL1666, FT-4 per CSA 22.2 No. 232 Plenum rated per NFPA-262, FT-6 per CSA 22.2 No. 232

Order Information

Dielectric (Single Jacket)
Dielectric (Single Jacket) Gel-Free
Dielectric (Dual Jacket)
Armored

Riser / FT-4

DRLTB Series
DRLDB Series
DRLTC Series
DRLTD Series

Plenum / FT-6

DPLDB Series

Low Smoke Zero Halogen (LSZH) Cable



Low emission, halogen-free design provides additional fire safety.

Specifications

Applications Low Emission Requirements / Hospitals, Subways, Airports, Tunnels & Other

Constructions Tight Buffer Distribution, Breakout, Loose Tube

Fiber Count 2 to 144 (Distribution) / 2 to 24 Fibers (Breakout) / 2 to 216 Fibers (Loose Tube)

Fiber Types Singlemode, Multimode and Specialty Fiber (*For Specifications see page 27*)

Options Riser / FT-4 Rating / Preconnectorized

Performance TIA/EIA-568B, ICEA 83-596, GR-20, RoHS Compliant Riser rated per UL1666, FT-4 per CSA 22.2 No. 232

Order Information

ezDISTRIBUTION
ezBREAKOUT
ezPREP Loose Tube
ezINTERCONNECT

LSZH / OFN-LS

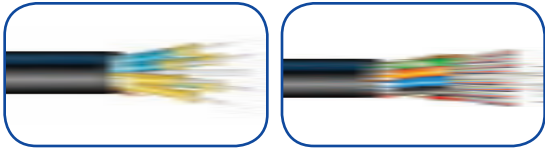
DLSZH Series

Riser / FT-4

LSZH Series
LSZH25 Series
LSZHXX Series

Specialty Cable

Nuclear* Cable



* Note: Cables are exclusively sold through Cablelan, a Draka authorized distributor.

Specifications

Applications

Ruggedized Loose Tube and Tight Buffer Cables Ideally Suited for Use in Nuclear Power Plants for Communication Links, Data Networks, Video Broadcasting and Emergency System Repair. These Cables are Built to Conform to the Requirements of the Nuclear Regulatory Commission (NRC) and to Comply with the Quality Assurance Requirements of 10 CR 50, Appendix B

Fiber Count

2 to 288 Depending on Cable Construction

Fiber Types

Singlemode, Multimode and Radiation Hardened Fiber
(For Specifications see page 27)

Options

Multiple Sheaths, Alternate Flame Ratings

Performance

TIA/EIA-568B, ICEA S-83-596, Telcordia GR-20

IEEE-383 Flame Test, Riser or Plenum Rated as Denoted by Cable Type

Riser rated per UL1666, FT-4 per CSA 22.2 No. 232

Plenum rated per NFPA-262, FT-6 per CSA 22.2 No. 232

Order Information

	Series	Flame Rating
LSZH Loose Tube	S779L	IEEE-383/OFN
LSZH Tight Buffered Breakout	S690T	IEEE-383/ORN
Tight Buffered Breakout	S753T	IEEE-383/ORN

* Note: Nuclear Cables are exclusively sold through Cablelan, a Draka authorized distributor.

ezPREP® | Loose Tube Harsh Environment Cable



Call Customer Care at 800.879.9862 for more details.

Specifications

Applications

Heavy Duty Protection from Harsh Chemicals & Solvents

Constructions

Dielectric, Armored & Dual Jacket Versions

Fiber Count

2 to 288 Fibers

Fiber Types

Singlemode, Multimode and Specialty Fiber (For Specifications see page 27)

Options

Preconnectorization

Performance

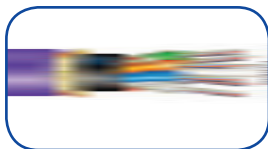
TIA/EIA-568B, ICEA 83-596, GR-20

General Purpose Flame rated per UL1685

Order Information

	OFN / OFC / FT-4
Dielectric (Single Jacket)	DXPCB (OFN)
Dielectric (Dual Jacket)	DXPCC (OFN)
Armored	DXPCD (OFC)
Dielectric (Dual Jacket)	DWWC (OFN)

Mining Cable



Call Customer Care at 800.879.9862 for more details.

Specifications

Applications

Heavy Duty Protection tough environments

Constructions

Dual Jacket Version

Fiber Count

2 to 288 Fibers

Fiber Types

Singlemode, Multimode and Specialty Fiber (For Specifications see page 27)

Options

Preconnectorization

Performance

TIA/EIA-568B, ICEA 83-596, GR-20

Riser rated per UL1666, FT-4 per CSA 22.2 No. 232

Order Information

	Riser / FT-4
Mining (MSHA Approved)	RLTM Series



Value Innovation For Your Next Generation Access Network

Tired of complicated and hard-to-administer incentive programs from other cable suppliers? Draka offers a number of hassle-free incentive programs for private network operators and installation contractors. For more information on our Private Network Programs, please ask your Draka Sales Representative.



First Time Buyer?

Draka is currently offering incentives to our new customers for the first time purchase of select Draka fiber cables. Call our First Time Buyers Hotline at 1.800.473.1203 or e-mail us at FirstTimeBuyer@Draka.com.



Contractor Rebate Program

Draka is currently offering a contractor rebate program for select Draka fiber cables. Contact our Customer Care Center at 1.800.879.9862 to receive further information and sign-up for the Contractor Rebate Program.



Extended Warranty Program

Need a warranty for your Private Network project? Draka offers a simple solution to deliver an extended warranty on your project. Draka's Extended Warranty Program allows the network operator to achieve warranty protection even when using non-Draka connectivity products in conjunction with end-to-end Draka fiber cable.



Certified Installer Program

Six options are available for the installation contractor to achieve certification status from Draka. Take advantage of the benefits and incentives provided to our national network of certified installers. For more information go to www.drakaamericas.com and click on Training or call our Customer Care Center at 1.800.879.9862.



**THINKING FIBER CABLE?
THINK DRAKA
FIRST!**

**DID YOU
KNOW...**

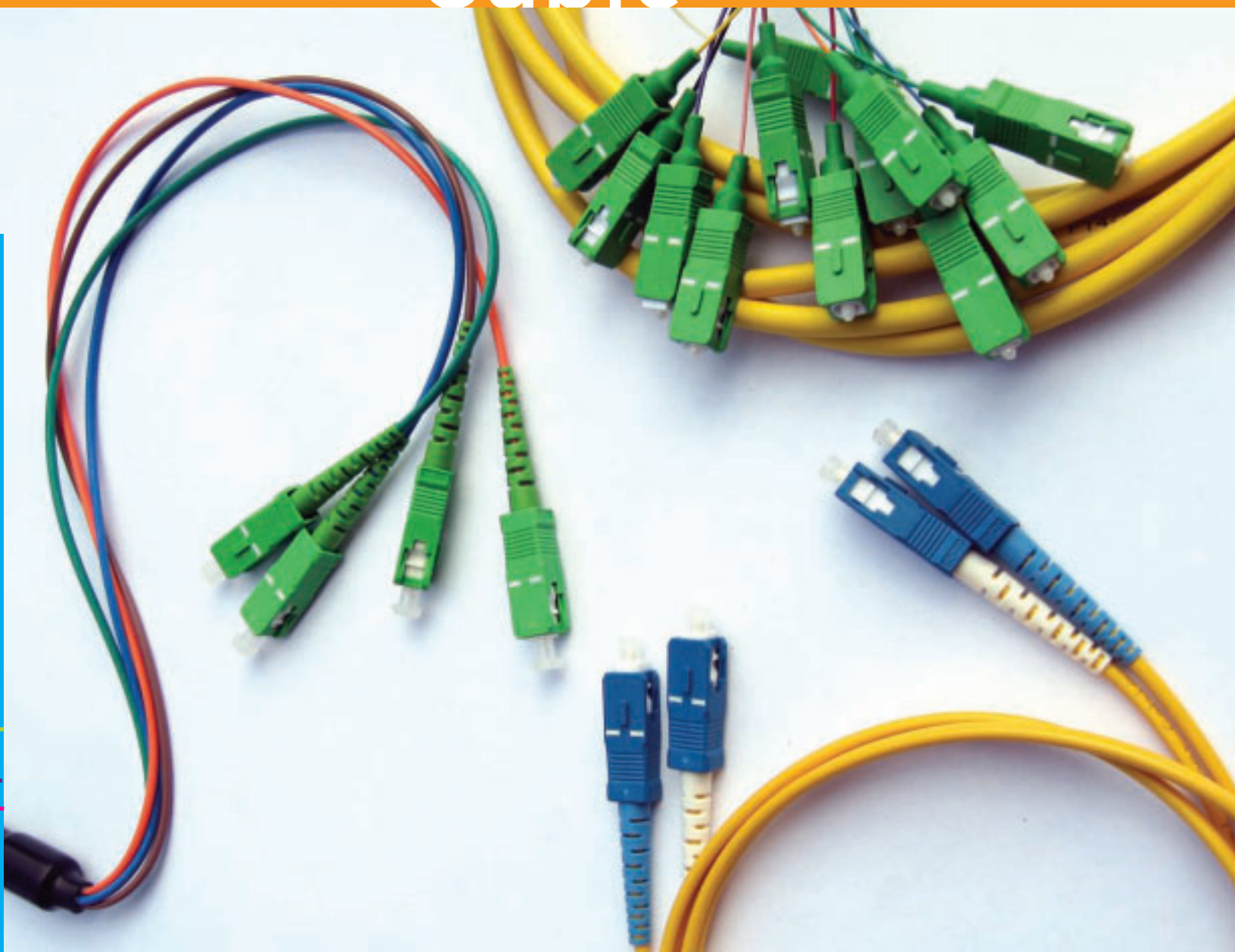
Draka is the world's #1 multimode producer

There are already 25 million miles of Draka cabled fiber deployed in North America

Draka promises best-in-class optical performance for singlemode, multimode and bend-insensitive fiber

Draka offers over 15,000 fiber cable products for high-speed, high quality telecommunications networks

Connectorized Cable





Value Innovation For Your Next Generation Access Network

[+] ezPATCH cords

[+] ezPATCH CATV Node cables

[+] Preconnectorized fiber cable

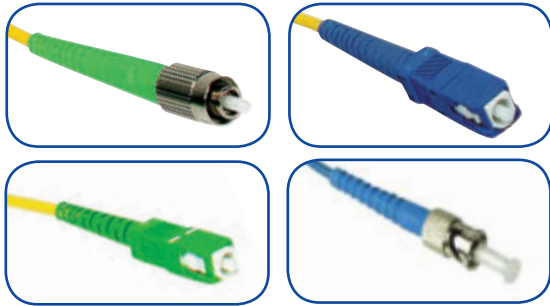
Every deployed optical fiber needs a connector on each end to enable signal transmission. So just like a chain is only as strong as its weakest link, every optical connection is only as reliable as its least reliable component, and since you are spending thousands and even millions of dollars on optical fiber and cable deployments, why settle for “cheap” patchcords or pigtails when you can buy connectorized cable assemblies containing fiber that is 100 times more bend tolerant than standard singlemode BendBright-XS® is the ideal bend-insensitive fiber for cross connecting and patching in central office, head-end or data center applications.

Draka’s BendBright-XS patchcords and pigtails can be purchased with industry standard optical connectors SC, FC, LC and ST* with either the Ultra polish (UPC) or Angle polish (APC) finishes. Draka also provides connectors with Hardened Lens Contact (HLC®) technology. Megladon’s HLC® Scratchguard® technology process meets the growing need for a scratch resistant, highly durable fiber optic mating surface. The Scratchguard connector technology is a critical step forward in connector quality and durability. It reduces potential connector end-face damage due to handling and repeated use. These benefits can save both capital and operating costs.

Draka also offers industry leading multi-fiber cable assemblies. So if you need single fiber drop or multi-fiber outside plant cables, same rated Indoor-Outdoor cables, or same rated indoor cables supplied with factory installed, industry standard, connectors then call Draka for competitive pricing and product availability. Draka stocks a wide variety of cable and fiber types so call your customer service representative for price and availability of the cable assembly that will meet your needs. Draka is your one-stop supplier for highly reliable, low cost, connectorized cable assemblies.



ezPATCH™ | Connectorized Cable



Specifications

Applications

Reliable Connectorized Patch Cords, Pigtails, & Cables for Interconnection & Termination

Constructions

Patch Cord (Both Ends), Pigtails (1 End), Cables (1 or 2 Ends)

Connector Types

LC, SC, FC, & ST (Ultra & Angled Polish Available)

Fiber Types

Singlemode and Multimode (*For Specifications see page 27*)

Options

Any Draka Cable or Cordage in Tailored Lengths / Simplex or Duplex, Cordage Diameter, Length, Fiber Type(s)

*Ask us about Hardened Lens Contact (*HLC®) *Scratchquard® technology.*

ezDROP™ | Connectorized Cable



Specifications

Applications

Preconnectorized FTtx Drop Cable Aerial Self-Support, Direct Buried, Duct

Configurations

Preconnectorized Fiber Drop Cable (1, 2-12 fiber)

Connector Types

LC, SC, FC, & ST & Hardened Connectors (Ultra & Angled Polish Available)

Fiber Count

1-6 fiber Connectorized

Fiber Types

Singlemode and Multimode (*For Specifications see page 27*)

Cable Types

1-6f Flat Drop Cable - Dielectric, Toneable; 2-12f Central Loose Tube Armored

Options

Preconnectorized ends: 1 (pigtail) or 2 (jumper)

Packaging: coils (up to 200') or reels

Cordage: 2 mm or 3mm (for standard connectors)

ANSI/ICEA, RDUP/RUS, Telcordia GR-20 Drop cable specifications, GR3120

Multi-fiber Connectorized Cable



Call Customer Care for Cable availability and minimum order quantities.

Specifications

Applications

Building entrances, outside cabinets, and in-building multi-fiber connections for Central Offices, Headends, FTtx, Data Centers, LANs, Surveillance, etc.

Configurations

One end and two end connectorized with standard optical cables

Connector Types

SC, LC, FC ST with UPC (Ultra PC), APC (Angled PC); MPO

Fiber Types

Singlemode and Multimode (*For Specifications see page 27*)

Cable Types

Draka standard optical cables - Loose Tube, Central Loose Tube, Ribbon, Tight Buffer Distributions, Breakout

Options

Custom Lengths

CATV Connectorized Node Cable



Refer to the data sheets on www.drakaamericas.com

Specifications

Applications	CATV, FTtx, Nodes
Configurations	Preconnectorized Central Loose Tube Armored and Dielectric
Connector Types	SC, LC, FC, ST with UPC (Ultra PC), APC (Angled PC); MPO
Fiber Count	1 fiber
Fiber Types	Singlemode and Multimode (<i>For Specifications see page 27</i>)
Options	Preconnectorized Ends- 1 (pigtail) 2 (jumper) With or without 5/8" Metal Grommet Packaging: coils (up to 200') or reels

Ask us about Hardened Lens Contact (*HLC®) *Scratchquard® technology.

MDU Connectorized Drop



Refer to the data sheets on www.drakaamericas.com

Specifications

Applications	Multiple Dwelling Units
Configurations	Cables (1 or 2 ends)
Connector Types	Preconnectorized SCAPC
Fiber Count	1 fiber
Fiber Types	Bend-Insensitive Fiber (<i>For Specifications see page 27</i>)
Options	Reels with 50, 100, 150, 200, 250, 300 foot lengths

Ask us about Hardened Lens Contact (*HLC®) *Scratchquard® technology.

Outdoor Cable





Value Innovation For Your Next Generation Access Network

Value Innovation - the "ez" advantage in Draka Outdoor Cable:

- [+] ezPREP®, ezRIBBON™, and ezDROP™ cables
- [+] ColorLock® & Colorlock-XS® fiber coatings
- [+] BendBright® & BendBright-XS® bend insensitive singlemode fiber
- [+] Our proprietary flexible buffer tubes with 20' midspan access and storage length
- [+] Multiple ripcords that speed cable entry & outer jacket removal
- [+] Adhesive bond between armor and jacket
- [+] Perfect traverse and attenuation test results sent with every reel
- [+] ezTOOLS™

Whether it is cross-campus or cross-country, Draka can deliver high-performance broadband cabling for every part of your outdoor network. Our "ez" family of cable is designed from the inside out to be the most user-friendly in the industry, starting with the fiber itself. Draka offers a complete portfolio of optical fiber to provide customers with the right product for their needs. Check out the optical fiber section of the catalog on page 27 for value-creating innovations like Colorlock-XS and BendBright-XS.

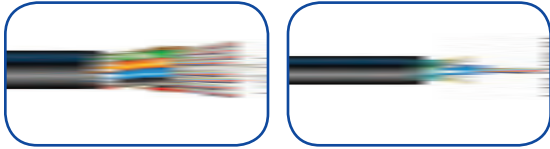
Just as important as the optical fiber, is the cable that protects it. Draka uses an impact modified polypropylene copolymer material in our buffer tubes that reduces the risk of fiber damage due to kinking and maintains flexibility even in cold temperatures - flexible enough that routing tubes are not necessary. Our buffer tubes also allow for 20' of slack storage and are available in a gel-free version, reducing the time and mess involved in cleaning buffer tubes in a gel-filled cable.

When designing a cable, the smallest details sometimes create significant value. For example, all Draka single jacket cables contain at least one ripcord but Draka armored and multi-jacket cables have two ripcords to ensure ease of entry. In addition, Draka is the only manufacturer to use an adhesive bond between its armor and jacket. This prevents the jacket from adhering directly to the armor so it can be easily removed, especially important when attempting a mid-span entry. Finally, Draka cable is spooled with a perfect traverse to prevent tangling upon installation and we attach attenuation test results to every reel!

To make certain that accessing our cable is "ez", Draka also designed the best buffer tube access tool available today. Not only is it incredibly simple to use, the ezTOOLS has been tested by Telcordia and shown to prevent damage to the fiber that is common with other tools.



ezPREP® | Gel and Gel-Free Loose Tube Cable



Refer to the data sheets on www.drakaamericas.com

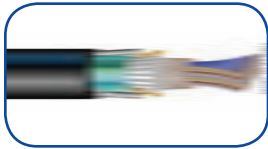
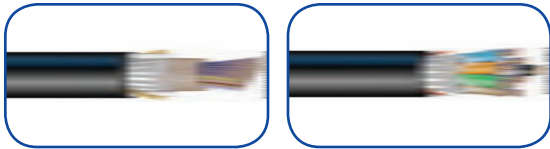
Specifications

Applications	Multi-purpose Outdoor - Aerial Lashed, Duct, Direct Buried
Constructions	Dielectric, Armored, Double Armored
Fiber Count	2 to 432 Fibers in Color-Coded Buffer Tubes
Fiber Types	Singlemode, Multimode and Specialty Fiber <i>(For Specifications see page 27)</i>
Options	Central Loose Tube (2-12f) / Gel & Gel-Free / -50 C Versions / Preconnectorized
Performance	ANSI/ICEA S-87-640, RUS 7 CFR-1755-900 (PE90 Listed), Telcordia GR-20

Order Information

	Series	Fiber Count	
ezPREP Loose Tube Central	C3H	2 to 12 Fibers	
ezPREP Loose Tube	ETH	2 to 432 Fibers	(12 Fibers per Tube)
ezPREP Loose Tube Gel-Free	EDH	4 to 432 Fibers	(12 Fibers per Tube)
ezPREP Loose Tube Heavy Duty	E3H	2 to 288 Fibers	(12 Fibers per Tube)

ezRIBBON™ | Gel and Gel-Free Cable



Refer to the data sheets on www.drakaamericas.com

Specifications

Applications	Multi-purpose Outdoor - Aerial Lashed, Duct, Direct Buried Multi-fiber Mass Fusion Splicing - High Counts & High Density
Constructions	Dielectric, Armored
Fiber Count	12 to 864 Fibers in Multi-fiber Ribbons
Fiber Types	Singlemode, Multimode and Specialty Fiber <i>(For Specifications see page 27)</i>
Options	Central Tube & Ribbon in Loose Tube Designs / Gel & Gel-Free
Performance	ANSI/ICEA S-87-640, RUS 7 CFR-1755-900 (PE90 Listed), Telcordia GR-20

Order Information

	Series	Fiber Count	
ezRIBBON Central Tube	CR2	12 to 216 fibers	(12 Fiber Ribbons)
	CR4	240 to 432 fibers	(24 Fiber Ribbons)
ezRIBBON Central Tube Gel-Free	DR2	12 to 216 fibers	(12 Fiber Ribbons)
	DR4	240 to 432 fibers	(24 Fiber Ribbons)
ezRIBBON Loose Tube	SRS	288 to 864 fibers	(12 Fiber Ribbons)

ezMICROUNITUBE™ | Cable



Refer to the data sheets on www.drakaamericas.com

Specifications

Applications	Multi-purpose Outdoor - Aerial Lashed, Duct, Direct Buried
Constructions	Dielectric, Armored
Fiber Count	2 to 24 Fibers Armored Fiber Bundles Separated by Color-coded Binder Threads 2 to 12 Fibers (Dielectric)
Fiber Types	Singlemode, Multimode and Specialty Fiber <i>(For Specifications see page 27)</i>
Options	Preconnectorized
Performance	ANSI/ICEA S-87-640, RUS 7 CFR-1755-900 (PE90 listed), Telcordia GR-20

Order Information

	Series	Fiber Count	
ezMICROUNITUBE	UMH	2 to 24 Fibers	(12 Fiber Bundles)

ezDROP™ | Flat, Figure 8, Ribbon Cable



Refer to the data sheets on www.drakaamericas.com

Specifications

Applications

Multi-purpose FTTx - Aerial Self-support, Direct Buried or Duct Using Existing Hardware & Methods

Constructions

Flat (Dielectric, Toneable) / Figure 8 / Ribbon (Dielectric, Toneable)

Fiber Count

1 to 12 Fibers (Flat) / 2 to 6 Fibers (Figure 8) / 4 or 6 Fiber Ribbon (Flat)

Fiber Types

Singlemode, Multimode and Specialty Fiber (*For Specifications see page 27*)

Options

Packaging: Portable Box / Spool / Bulk Reel / Preconnectorized (1 or 2 Ends)

Performance

Applicable ANSI/ICEA, RUS Listed, Telcordia GR-20 for Drop Cable Requirements

Order Information

ezDROP | Flat, Dielectric
ezDROP | Flat, Toneable
ezDROP | Figure 8
ezDROP | Ribbon, Dielectric
ezDROP | Ribbon, Toneable

Series

DFS
DFT
DF8
DRS
DRT

Fiber Count

1 to 12 Fibers
1 to 12 Fibers
2 to 6 Fibers
4 or 6 Fibers
4 or 6 Fibers

ezMICROduct™ | Cable



Refer to the data sheets on www.drakaamericas.com

Specifications

Applications

Jetted Micro-Duct Deployment, Installed in micro-ducts or partially filled duct

Constructions

Stranded Dielectric Loose Tube / Specialized Jacket & Construction

Fiber Count

2 to 144 fibers in Color-Coded Buffer Tubes

Fiber Types

Singlemode, Multimode and Specialty Fiber (*For Specifications see page 27*)

Options

Preconnectorized / 19 AWG Tone Wire

Performance

ANSI/ICEA, IEC, RUS Listed, Telcordia GR-20

Order Information

ezMICROduct | Dielectric

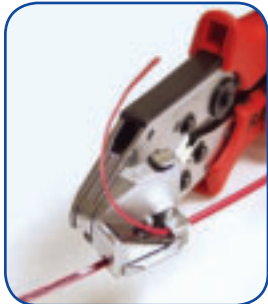
Series

MDS

Fiber Count

2 to 144 Fibers

ezTOOLS™ | Mispan Access Tool



ezTOOLS | Loose Tube kit comes with three standard inserts for 12 fiber tubes: 2.5 / 2.7 / 3.0mm.

Specifications

Applications

Reliable Tube Mid-entry into Draka's Loose Buffer Tubes & Central Tubes

Flexible Access for Fiber Distribution, Drops & Reconfiguration

Tool Types

Loose Tube (1.5 to 4.3mm) & Central Tube (4.3 to 14.0mm) Versions

Options

Inserts to Fit a Variety of Loose Tube & Central Tube Sizes

Order Information

ezTOOLS | Loose Tube

ezTOOLS | Central Tube

Tube Sizes / Inserts (mm)

1.5 / 1.8 / 1.9 / 2.0 / 2.2 / 2.4 / 2.5 / 2.6 / 2.7 / 2.8 / 3.0 / 4.3mm

4.3 / 6.1 / 6.3 / 7.0 / 7.9 / 9.1 / 10.4 / 11.7 / 12.2 / 14.0 / 14.5mm

Outdoor Cable

The designs support fiber placement virtually everywhere on an overhead structure - from the communications space to the power region - with standards-based performance (IEEE 1222, RUS, Telcordia GR-20) & proven compatibility with standard hardware & practices.

ezSPAN® | ADSS Cable



Complete our easy ADSS Worksheet for details on www.drakaamericas.com

Specifications

Applications	Self-Supporting Aerial Deployment for Communications & Transmission Space Engineered to Specific Span & Environmental Loading Conditions
Constructions	All Dielectric – Typical Span Lengths (Dependent Upon Span & Loading Conditions) Short Span (up to 1,700' / 500m) & Long Span (up to 2,600' / 800m)
Fiber Count	2 to 288 Fibers in Color-Coded Buffer Tubes
Fiber Types	Singlemode, Multimode and Specialty Fiber (<i>For Specifications see page 27</i>)
Options	Single or Dual Jackets / Track Resistant Jacket Option Matching Pole Attachment Hardware: Dead Ends, Suspension Clamps
Performance	IEEE 1222, ANSI/ICEA S-87-640, RUS (PE90 listed), Telcordia GR-20

Order Information

	Series	Span Lengths
ezSPAN ADSS Short Span	ADE	Up to 1,700' / 500m (Dependent on Loading)
ezSPAN ADSS Long Span	ADL	Up to 2,600' / 800m (Dependent on Loading)

ezPREP® | Loose Tube Figure 8 Cable



Refer to data sheet for span & loading performance.

Specifications

Applications	Self-Supporting Aerial Deployment for Communications Space Single-Step Placement up to 600' (183m) Dependent on Loading Conditions
Constructions	Nonarmored & Armored with 1/4" (6.4mm) Integrated Messenger
Fiber Count	2 to 216 Fibers in Color-Coded Buffer Tubes
Fiber Types	Singlemode, Multimode and Specialty Fiber (<i>For Specifications see page 27</i>)
Performance	ANSI/ICEA S-87-640, RUS 7 CFR-1755-900 (PE90 Listed), Telcordia GR-20

Order Information

	Series	Span Lengths
ezPREP Loose Tube Figure 8	F8S	Up to 600' / 183m (Dependent on Loading)



Draka BendBright-XS[®]

**Value Innovation
For Real World
Situations**

2002 - BendBright, Draka's first generation bend-insensitive fiber, is introduced.

2005 - Draka is first manufacturer to make bend-insensitive fiber standard in all Drop cables.

2006 - BendBright-XS, Draka's 2nd generation bend-insensitive fiber is introduced with one hundred times bending performance improvement over standard singlemode.

2007 - ColorLock-XS[®] brought ten times better micro-bending performance on all fibers including BendBright-XS.

2008 - BendBright-XS available in all OSP and MDU cables.

Today - Draka has sold over One Billion Feet of BendBright-XS into access projects all over the world!

Optical Fiber Types





Value Innovation for your Next Generation Access Network

Industry-Leading Optical Fiber Innovations

[+] **BendBright® and ColorLock® Singlemode Fiber Innovations**

[+] **MaxCap® (OM3+) Multimode Fiber**

[+] **Draka Elite Specialty Fiber**

BendBright® Family of Bend-Insensitive Fibers (BIF)

Draka offers a complete portfolio of optical fiber products to support a variety of applications and requirements. Singlemode fibers include standard singlemode, Enhanced Singlemode (Low Water Peak), TeraLight®, NZDSF-LA, BendBright, BendBright-XS and BendBright-Elite. All Draka fibers are fully compliant with relevant industry standards including ITU, TIA, ICEA, IEC, Telcordia and RUS. Thanks to unique processes developed in-house, the PCVD™ (Plasma Chemical Vapor Deposition) core preform process and the APVD® (Advanced Plasma Vapor Deposition) over cladding process, as well as a strong commitment to research and development, Draka Communications Optical Fiber is well positioned to provide customers with the right fiber product for their needs.

About ColorLock-XS® Fiber Coating

Unlike other Singlemode fibers on the market that require an additional process to color the fiber, ColorLock-XS uses a patented technology in which the fibers are colored during the draw process. Draka fibers offer unmatched reliability and world-class optical and aging performance using Draka's revolutionary ColorLock-XS Coating System which incorporates color into the fibers' secondary coating. This replaces the traditional method of surface application of thin layers of ultraviolet (UV) curable inks by passing the fiber through small dies. Coloring with inks after the coating process can result in geometric variations, color variations and reduction in strength through die abrasion. With Draka fibers, coated geometry is guaranteed and fiber color is always vibrant and consistent, even with age. Most important, Draka fiber with ColorLock-XS is 100% proof-tested after coloring to guarantee fiber strength and durability. Fibers made by other manufacturers are only proof-tested uncolored, leaving the impacts of coloring on the fibers' strength untested.



Singlemode Fibers



Refer to data sheets for common attenuation & performance grades.



ESMF, BendBright®, BendBright-XS®, TeraLight®, NZDSF-LA, Longline

Specifications

Applications

Extended Spans & High Data Rates Used in Telecom, CATV, FTTx & Long-Haul
Typically Includes SONET, SDH, DWDM, ATM, Ethernet, IP, Analog Video & Others
Low Attenuation / DWDM / Lifetime Reliability / ColorLock-XS® Coating

Benefits

Fiber Types

ESMF: Full Spectrum 1260-1625nm / G.652D
BendBright: ESMF with Improved Bend Performance / G.652.D
BendBright-XS: Bend-insensitive SMF with Improved Bend Performance / G.652.D, G.657 A & B
TeraLight: Long-Haul NZDS / DWDM / ITU-T, G.656, G.655
NZDSF-LA: Long-Haul NZDS / DWDM / ITU-T, G.655
LongLine: Ultra Long Haul / ITU-T G.654.B

Performance

Order Information

ESMF Enhanced Singlemode
BendBright
BendBright-XS
TeraLight Ultra
TeraLight
NZDSF-LA
Longline Ultra

Application

Application	Fiber Code	Spec (ITU)
Metro	ES	G.652D
Metro, Access	BB	G.652.D and G.657.A
Access, Premises, Metro	BX	G.652.D and G.657.A & B
Long-Haul	TU	G.655 C & E and G.656
Long-Haul	TM	G.655 C & E and G.656
Long-Haul	LA	G.655 C & D
Long-Haul	LL	G.654.B

Multimode Fibers



Refer to data sheets for common attenuation & performance grades.

MaxCap®, Standard

Specifications

Applications

Building, Campus, Data Center & Local Area

Transmission

Typically Includes Ethernet, ATM, Fiber Channel, FDDI, Token Ring
Coupling Efficiency / High Bandwidth / Laser Optimized / PCVD™ Process

Benefits

Fiber Types

MaxCap: Maximum Bandwidth / 10 GbE Optimized / 50um Core
Standard: Legacy Bandwidth / Up To 1 GbE Distance-limited / 50 & 62.5um Core

Performance

IEC 60793-2-10, ISO/IEC 11801, TIA-492A

Order Information

MaxCap 550 (10 GbE / 550m)
MaxCap 300 (10 GbE / 300m)
MaxCap 150 (10 GbE / 150m)
Legacy 50µm (Std Graded Index)
Legacy 62.5µm (Std Graded Index)

Core Size

50µm
50µm
50µm
50µm
62.5µm

Fiber Code Spec (ISO / IEC)

Fiber Code	Spec (ISO / IEC)
55	OM-4 (Proposed) / A1a.2
53	OM-3,4 / A1a.2
51	OM-2+ / A1a.2
5S	OM-2 / A1a.1
6S	OM-1 / A1b

Specialty Fibers



For customized specifications & designs, contact Draka.

Draka Elite

Specifications

Applications

A Full Line of Specialty Fibers to Support a Variety of Applications Including:

- > BendBright-Elite®: Ultra bend-insensitive SMF with Improved Bend Performance / G.652.D, G.657 A & B
- > Patchcord Fibers (Tight Geometry)
- > Radiation-Hardened Fibers (MIL certified, MIL-PRF-49291)
- > Specialized Core (100/140um) & Coating (500um)

Benefits

Draka's Exclusive PCVD™ Process Enables Optimized Fiber Core Designs with Unmatched Precision for a Variety of Specialized & Customized Designs.

Order Information

BendBright-Elite

Application

Premises, Metro

Fiber Code

BE

Spec (ITU)

G.652.D and G.657.A & B

VALUE INNOVATION



Introducing ColorLock-XS[®]

For quicker and
easier installation

Draka ColorLock-XS | Value Innovation for all your singlemode fiber needs

Value Innovation is a way of looking at the world. How we can help our customers do more, make more, save more, achieve more. Take Draka ColorLock-XS. An evolution of our trusted ColorLock optical-fiber coating, ColorLock-XS delivers never-before-seen levels of value and performance. New, punchier colors make fibers even easier to identify. A ten-fold improvement in micro-bending tolerance ensures a higher transmission performance. Enhanced stripability speeds installation. Improved de-lamination resistance enables aggressive cable designs. All of which means lower costs, less rework, less maintenance and a longer life expectancy for your cables. And with ColorLock-XS now available across the entire Draka Singlemode Fiber range, you get all these benefits no matter which singlemode fiber you need. That's Value Innovation in action.

Resources





INNOVATION

Value Innovation
for your Next
Generation Access
Network

[+] Current Data Sheets

[+] Ordering Guides

[+] Application Reports

[+] Technical Tips

[+] Installation Guides



Technical Services Support

To design and maintain high-speed, complex networks you'll need advanced levels of expertise. We realize that training technical personnel prepared to ascertain system requirements, understand engineering issues, select and install cable is not an insignificant hurdle. Responsive support and literally years of experience in the cable industry make Draka uniquely positioned to assist in the logistics of deploying fiber

optic cable. Draka's Technical Services staff will help you overcome these obstacles. Building a reliable, future-proof broadband network requires not only the best technology, but also experience and assistance in deploying that technology.

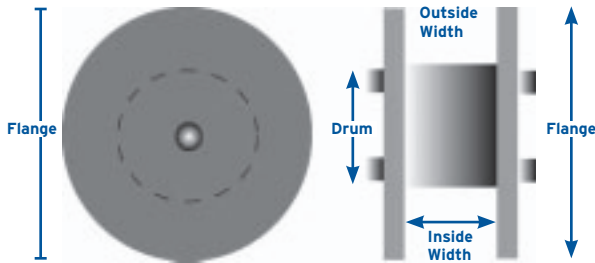
Products found in this catalog revolve around our more popular cable types as well as our growing array of pre-connectorized cables and tools. This represents just a sampling of the complete product portfolio offered by Draka. If you don't see what you are looking for here, please contact Customer Care at 828.459.9787 or sales@drakaamericas.com.

Draka offers a wealth of experience, knowledge, services and tools designed to assist you to successfully deploy state-of-the-art optical networks. Among the many resources and tools made available on our website, you will find best practice installation procedures and proper handling techniques. Data sheets are the most frequently downloaded information from our web content and provide in-depth information about specific products including a general description, construction information and performance ratings. Data sheets are frequently updated with new information, so please check back frequently for the most current specifications.



Resources | Reel Selection Chart - Flame Rated Distribution & Interconnect Cables

Reel Sizes (Less Than 30") for Premise Cables



	10"	14"	16"	18"	24"	30"
Flange Diameter (in/cm)	9.75/24.8	14/35.6	15.5/39.4	18/45.7	23.63/60	29.5/74.9
Traverse (in/cm)	9/22.9	10/25.4	12/30.5	14.5/36.8	14.5/36.8	17.5/44.5
Drum Diameter (in/cm)	6/15.2	8/20.3	8/20.3	8/20.3	12.1/30.7	12.1/30.7
Flange Type	Plywood	Plastic	Plywood	Plywood	Plywood	Plywood

Estimated Reel Capacity in Feet

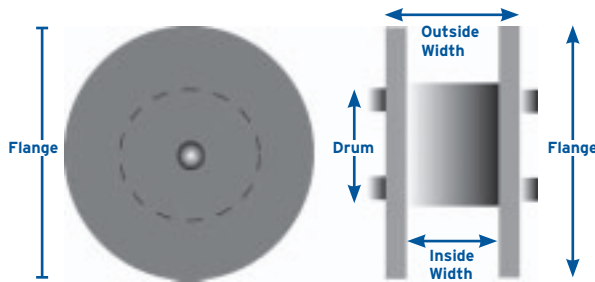
Cable Diameter (mm/in)	10"	14"	16"	18"	24"	30"
ZIPCORD (Thickness)						
1.6/0.063	2,441	7,206	12,155	22,793	28,215	-
2/0.079	1,792	5,023	8,512	16,158	25,795	28,215
2.9/1.114	822	2,394	3,910	7,340	11,858	24,934
Round						
1/0.04	15,506	-	-	-	-	-
2/0.08	3,690	10,649	18,203	-	-	-
3/0.12	1,581	4,824	7,961	15,137	23,855	-
4/0.16	855	2,549	4,399	8,301	13,401	28,215
5/0.20	504	1,620	2,798	5,157	8,362	19,022
6/0.24	349	1,122	1,877	3,753	5,914	13,103
7/0.28	-	641	1,049	2,240	3,783	8,624
8/0.31	-	-	817	1,666	2,922	6,739
9/0.35	-	-	631	1,368	2,231	5,201
10/0.39	-	-	-	1,119	1,859	4,229
11/.043	-	-	-	910	1,549	3,413
12/.047	-	-	-	-	1,285	2,969
13/.051	-	-	-	-	1,056	2,577

Notes:

Armored Cables (Interlock or corrugated steel tape) can only be placed on 30" reels.

Resources | Reel Selection Chart

Non-Returnable Reels - English Units



Reel Designation	R-18 PLY	R-30 PLY	R-38	R-44	R-50	R-55	R-59	R-67	R-78	R-88	R-96
Outside Dimensions											
Flange Diameter (in)	18	29.5	38	44	50	55	59	67	78	88	96
Outside Width (in)	15	20	32	32	32	46	46	46	48	54	54
Inside Dimensions											
Drum Diameter (in)	8	12	20	20	20	30	32	34	40	48	52
Inside Width (in)	15	18	27	27	27	40	40	40	40	46	46
Empty Weight (lb)	7	41	106	130	153	290	326	402	735	946	1,191

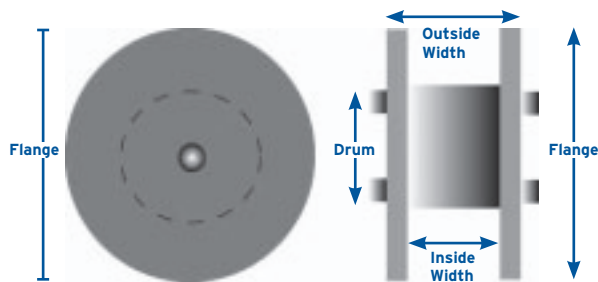
Cable Diameter (inches)	Estimated Reel Capacity (feet)										
	18"	30"	38"	44"	50"	55"	59"	67"	78"	88"	96"
0.20	3,750	14,300	33,150	40,500	-	-	-	-	-	-	-
0.25	2,480	9,410	21,170	33,610	40,500	-	-	-	-	-	-
0.30	1,590	6,320	14,410	22,990	32,960	40,500	-	-	-	-	-
0.35	1,260	4,670	10,760	16,630	24,300	36,030	40,500	-	-	-	-
0.40	-	3,390	7,930	13,050	18,270	27,220	31,350	40,500	-	-	-
0.45	-	2,870	6,190	10,160	14,090	21,350	24,870	35,630	40,500	-	-
0.50	-	2,200	5,240	8,320	11,900	17,590	20,690	29,080	40,080	40,500	-
0.55	-	1,850	4,010	6,770	9,450	14,430	16,140	23,580	31,820	40,500	-
0.60	-	1,550	3,370	5,450	7,880	11,740	14,170	19,960	27,340	39,220	40,500
0.65	-	-	2,810	4,730	7,000	10,240	11,590	16,840	23,440	32,320	39,170
0.70	-	-	2,650	4,100	5,770	8,920	10,150	14,110	20,030	27,740	33,960
0.75	-	-	2,200	3,540	5,100	7,760	8,880	12,560	17,030	25,010	29,360
0.80	-	-	1,810	3,040	4,490	6,730	7,750	11,170	15,300	21,340	26,620
0.85	-	-	1,720	2,600	3,950	5,810	6,740	9,930	13,740	19,230	22,880
0.90	-	-	1,390	2,490	3,460	4,990	5,840	8,800	11,500	17,310	20,720
0.95	-	-	1,330	2,110	3,010	4,780	5,600	7,780	10,270	14,540	18,750
1.00	-	-	1,280	2,040	2,920	4,080	4,820	6,860	9,890	13,990	16,960
1.10	-	-	-	-	-	3,320	3,980	5,810	7,840	11,210	13,810
1.20	-	-	-	-	-	2,680	3,260	4,910	6,730	9,670	11,130

Notes:

- 1) Reel capacities are estimates based on nominal values.
- 2) Available minimum and maximum lengths vary by product - contact Draka for details on a specific product.
 - > Minimum length is typically 3,280 feet, depending upon product.
 - > Maximum length is typically < 40,500 feet, depending upon product.
- 3) To maintain acceptable bend radius, certain armored designs are not available on the smallest reel sizes. Contact Draka for details on a specific product.
- 4) This information is also available online in the Resources section at www.drakaamericas.com

Resources | Reel Selection Chart

Returnable Reels - English Units



Reel Designation	RC-30	RC-35	RC-42	413	414	415	416	417	419	420	487
Material	Composite	Composite	Composite	Steel	Steel	Steel	Steel	Steel	Steel	Steel	Steel
Outside Dimensions											
Flange Diameter (in)	30	35	42	48	50	56	66	78	78	84	96
Outside Width (in)	20	30	32	24.0	31.4	29.5	31.6	32.5	37.0	44.5	52.9
Inside Dimensions											
Drum Diameter (in)	15	16.75	18	30	30	30	36	42	42	42	42
Inside Width (in)	17	27	29	18.0	25.4	25.4	25.4	25.4	30.0	39.0	44.5
Empty Weight (lb)	60	75	85	216	250	282	360	566	610	782	1,400

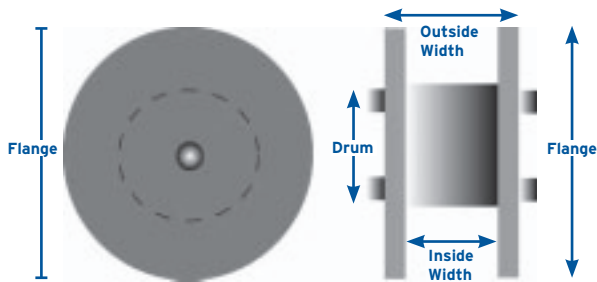
Cable Diameter (inches)	Estimated Reel Capacity (feet)										
	30"	35"	42"	48"	50"	56"	66"	78"	78"	84"	96"
0.20	12,112	29,161	-	30,173	40,500	-	-	-	-	-	-
0.25	7,910	18,628	33,719	19,256	32,025	40,500	-	-	-	-	-
0.30	5,351	12,674	23,059	13,109	21,527	32,172	40,500	-	-	-	-
0.35	3,782	9,468	16,681	9,769	15,540	23,728	33,936	40,500	-	-	-
0.40	2,853	6,969	13,103	7,206	12,435	18,024	25,551	37,960	40,500	-	-
0.45	2,357	5,444	10,195	5,628	9,290	14,213	19,752	29,339	34,748	-	-
0.50	1,948	4,613	8,356	4,746	7,926	11,759	16,609	24,197	28,668	40,500	-
0.55	1,605	3,527	6,800	3,648	6,243	9,699	13,235	19,878	23,558	37,771	40,500
0.60	1,313	2,958	5,472	3,056	5,317	7,946	11,043	16,205	19,211	31,476	40,500
0.65	1,064	2,467	4,752	2,550	4,521	6,443	9,769	13,780	16,341	27,257	40,500
0.70	-	2,336	4,119	2,393	3,830	5,611	8,081	11,665	13,837	23,553	38,127
0.75	-	1,937	3,557	1,991	3,226	4,878	7,130	10,435	12,382	20,277	33,639
0.80	-	1,587	3,056	1,639	3,059	4,228	6,285	9,338	11,084	17,366	29,614
0.85	-	-	2,608	1,555	2,562	3,647	5,529	7,798	9,260	15,691	25,985
0.90	-	-	2,508	1,263	2,120	3,489	4,849	6,942	8,245	14,173	22,703
0.95	-	-	-	1,205	2,026	2,998	4,235	6,166	7,326	12,792	20,812
1.00	-	-	-	1,152	1,941	2,880	4,069	5,927	7,045	11,530	19,075
1.10	-	-	-	-	1,526	2,371	3,059	4,647	5,527	9,307	15,043
1.20	-	-	-	-	1,178	1,938	2,534	3,953	4,704	7,422	12,469

Notes:

- 1) Reel capacities are estimates based on nominal values.
- 2) Available minimum and maximum lengths vary by product - contact Draka for details on a specific product.
 - > Minimum length is typically 3,280 feet, depending upon product.
 - > Maximum length is typically < 40,500 feet, depending upon product.
- 3) To maintain acceptable bend radius, certain armored designs are not available on the smallest reel sizes. Contact Draka for details on a specific product.
- 4) This information is also available online in the Resources section at www.drakaamericas.com.
- 5) To schedule a pickup for a truckload quantity of returnable reels, contact Draka at 800.879.9862.

Resources | Reel Selection Chart

Non-Returnable Reels - Metric Units



Reel Designation	R-18 PLY	R-30 PLY	R-38	R-44	R-50	R-55	R-59	R-67	R-78	R-88	R-96
Outside Dimensions											
Flange Diameter (cm)	46	75	97	112	127	140	150	170	198	224	244
Outside Width (cm)	39	51	81	81	81	117	117	117	122	137	137
Inside Dimensions											
Drum Diameter (cm)	20	30	51	51	51	76	81	86	102	122	132
Inside Width (cm)	38	46	69	69	69	102	102	102	102	117	117
Empty Weight (kg)	3	19	48	59	69	132	148	182	333	429	540

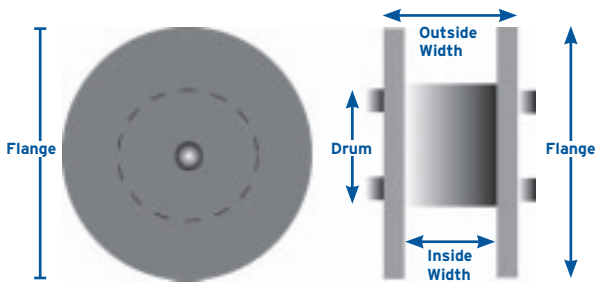
Cable Diameter	Estimated Reel Capacity (meters)										
	46cm	76cm	96cm	112cm	127cm	140cm	150cm	170cm	198cm	224cm	244cm
5	1,157	4,586	10,225	12,340	-	-	-	-	-	-	-
6	789	3,127	7,039	11,361	12,340	-	-	-	-	-	-
7	578	2,292	5,201	8,335	11,984	12,340	-	-	-	-	-
8	469	1,751	4,005	6,237	9,123	12,340	-	-	-	-	-
9	331	1,414	3,047	5,027	7,075	10,428	12,340	-	-	-	-
10	-	1,133	2,446	4,023	5,871	8,397	10,107	12,340	-	-	-
11	-	897	2,108	3,372	4,844	7,067	8,199	11,618	12,340	-	-
12	-	771	1,669	2,815	3,962	5,932	6,943	9,648	12,340	-	-
13	-	661	1,430	2,332	3,385	4,954	5,859	8,331	11,558	12,340	-
14	-	564	1,222	2,062	2,877	4,391	4,913	7,176	9,686	12,340	-
15	-	478	1,039	1,681	2,589	3,624	4,372	6,156	8,429	12,096	12,340
16	-	-	989	1,475	2,177	3,197	3,890	5,561	7,310	10,562	12,340
17	-	-	837	1,290	1,951	2,816	3,457	4,732	6,650	9,190	11,191
18	-	-	702	1,239	1,745	2,472	3,067	4,262	5,728	8,378	10,258
19	-	-	673	1,082	1,557	2,372	2,714	3,835	5,200	7,640	8,967
20	-	-	558	938	1,385	2,078	2,393	3,445	4,717	6,584	8,211
22	-	-	518	781	1,191	1,747	2,027	2,760	3,867	5,432	6,878
24	-	-	409	647	923	1,465	1,715	2,383	3,143	4,767	5,740
26	-	-	-	-	-	1,222	1,445	2,055	2,740	3,898	4,759
28	-	-	-	-	-	1,011	1,211	1,769	2,387	3,413	4,202
30	-	-	-	-	-	827	1,006	1,516	2,075	2,984	3,434

Notes:

- 1) Reel capacities are estimates based on nominal values.
- 2) Available minimum and maximum lengths vary by product - contact Draka for details on a specific product.
 - > Minimum length is typically 1,000 meters, depending upon product.
 - > Maximum length is typically < 12,340 meters, depending upon product.
- 3) To maintain acceptable bend radius, certain armored designs are not available on the smallest reel sizes. Contact Draka for details on a specific product.
- 4) This information is also available online in the Resources section at www.drakaamericas.com.

Resources | Reel Selection Chart

Returnable Reels - Metric Units



Reel Designation	RC-30	RC-35	RC-42	413	414	415	416	417	419	420	487
Material	Composite	Composite	Composite	Steel	Steel	Steel	Steel	Steel	Steel	Steel	Steel
Outside Dimensions											
Flange Diameter (cm)	76	89	107	122	127	142	168	198	198	213	244
Outside Width (cm)	51	76	81	61	80	75	80	83	94	113	134
Inside Dimensions											
Drum Diameter (cm)	38	42.5	46	76	76	76	91	107	107	107	107
Inside Width (cm)	43	69	74	46	65	65	65	65	76	99	113
Empty Weight (kg)	27	34	39	98	114	128	64	257	277	355	636

Cable Diameter	Estimated Reel Capacity (meters)										
	76cm	89cm	107cm	122cm	127cm	142cm	168cm	198cm	224cm	213cm	244cm
5	3,735	9,323	-	9,317	12,340	-	-	-	-	-	-
6	2,661	6,465	11,394	6,412	10,601	12,340	-	-	-	-	-
7	1,861	4,572	8,359	4,732	8,015	11,560	12,340	-	-	-	-
8	1,462	3,521	6,254	3,639	6,017	8,796	12,340	-	-	-	-
9	1,142	2,860	5,043	2,773	4,689	7,166	9,899	12,340	-	-	-
10	880	2,313	4,035	2,225	3,838	5,559	8,193	11,707	12,340	-	-
11	739	1,854	3,384	1,912	3,129	4,695	6,761	9,537	11,294	12,340	-
12	619	1,601	2,825	1,517	2,530	3,957	5,542	8,001	9,478	12,340	-
13	516	1,256	2,339	1,299	2,192	3,320	4,733	6,960	8,246	12,340	-
14	427	1,073	2,069	1,109	1,899	2,766	4,027	6,049	7,168	11,495	12,340
15	405	1,020	1,685	944	1,641	2,451	3,613	5,244	6,217	10,113	12,340
16	332	869	1,479	893	1,413	2,171	3,049	4,529	5,371	8,879	12,340
17	316	735	1,294	758	1,211	1,920	2,729	3,891	4,615	7,772	12,340
18	-	705	1,245	637	1,155	1,694	2,439	3,522	4,178	6,773	11,529
19	-	591	1,086	608	985	1,489	2,177	3,186	3,781	6,192	10,270
20	-	569	941	506	944	1,304	1,939	2,880	3,418	5,659	9,119
22	-	-	784	466	768	1,095	1,660	2,342	2,782	4,440	7,456
24	-	-	-	369	620	917	1,296	1,887	2,242	3,914	6,366
26	-	-	-	-	494	764	1,100	1,634	1,943	3,219	5,414
28	-	-	-	-	464	631	930	1,413	1,681	2,832	4,578
30	-	-	-	-	363	598	881	1,219	1,451	2,489	4,105

Notes:

- 1) Reel capacities are estimates based on nominal values.
- 2) Available minimum and maximum lengths vary by product - contact Draka for details on a specific product.
 - > Minimum length is typically 1,000 meters, depending upon product.
 - > Maximum length is typically < 12,340 meters, depending upon product.
- 3) To maintain acceptable bend radius, certain armored designs are not available on the smallest reel sizes. Contact Draka for details on a specific product.

- 4) This information is also available online in the Resources section at www.drakaamericas.com.
- 5) To schedule a pickup for a truckload quantity of returnable reels, contact Draka at 800.879.9862.



Draka manufactures more than 15,000 varieties of fiber optic cable. We have prepared this guide to help you select the ideal cable for your application.

1. How many fibers are needed in this cable?

Choose 1-864: _____

Advice: When above 12 fibers, order in units divisible by 12 (ex: 24, 36, 48)

2. What type of fiber is required in this cable? (Check One)

- Enhanced Low Water Peak Singlemode G. 652.D
- Bend-Insensitive Fiber G.657 A&D
- Non-Zero Dispersion Shifted Singlemode - Large area - (NZDS-LA)
- Non-Zero Dispersion Shifted Singlemode - TeraLight® - (NZDS-TLU)
- 62.5 micron OM1 Multimode Fiber
- 50 micron OM2 Multimode Fiber
- 50 micron OM3 10 GbE Multimode Fiber
- 50 micron OM4 10/40 GbE Multimode Fiber

3. Total length of cable needed?

_____ meters or feet

Advice: Draka has a minimum order quantity of 1640 feet for indoor cable and 3280 feet for outdoor cable.

4. Do you need the cable cut into specific lengths or packaged in a unique way?

*Advice: Draka typically places cables on non-returnable wood reels.
Advice: Cables cut to lengths less than 3280 feet (outdoor cable) or 1640 feet (indoor cable) will experience a cut fee.*

5. Is this cable for indoor, outdoor or indoor-outdoor use? (Check One)

- For Outdoor Cables answer questions 5A - 5B:
- For Indoor Cables answer questions 6A - 6C:
- For Indoor-Outdoor Cables answer questions 7A - 7B

Outdoor Cables:

5a: Select the cable construction do you desire for this cable: (Check One)

- Loose Tube with Gel Filled Tubes
- Loose Tube with Dry Tubes
- Central Tube Ribbon with Gel Filled Tube
- Central Tube Ribbon with Dry Tube
- ADSS (All Dielectric Self-Support Cable)
- Figure 8 Cable
- Central Tube Cable (2-24 fibers only)
- Flat Drop Cable (1 - 12 fibers only)

5b: Select the jacket (sheath) configuration for this cable: (Check One)

- Dielectric (non-armor)
- Single Armor - Single Jacket
- Single Armor- Double Jacket
- Double Armor - Triple Jacket
- Double Jacket - Aramid Yarns between Jackets



Indoor Cables:

6a: Select the safety flame rating desired for this cable: (Check One)

- Riser Rated (FT4)
- Plenum Rated (FT6)
- Low Smoke Zero Halogen Rated
- Chemical Resistant
- Mining Rated

6b: Select the cable construction you desire for this cable: (Check One)

- Simplex (1 fiber only)
- MDU (1 fiber only)
- Zipcord (2 fibers only)
- Tight Buffer Distribution
- Tight Buffer Breakout
- Flat Ribbon Interconnect (12 fibers only)
- Round Central Tube Ribbon Riser

6c: Do you desire the cable to be placed inside of interlock armor? (Check One)

- yes
- no

Indoor Outdoor Cables:

7a: Select the format of the fibers for this cable: (Check One)

- Loose Tube with Gel Filled Tubes
- Loose Tube with Dry Tubes
- Tight Buffer
- Central Ribbon Riser

Indoor Outdoor Cables:

7b: Select the safety flame rating desired for this cable: (Check One)

- Riser Rated (FT4)
- Plenum Rated (FT6)
- Low Smoke Zero Halogen Rated

Connectorized Cables:

8a: Do you need connectors installed on the cable? If yes, answer questions 8b-8c.

8b: Select the style of connector needed: (Check One)

- SC
- ST
- LC
- Other _____

**Ask us about Hardened Lens Contact (*HLC®) *Scratchquard® technology.*

8c: Are connectors to be installed on one or both ends of the cable? (Check One)

- One End
- Both Ends

Note: Notify Draka if connectors are required on both ends of the cable but the connectors are a different style on each end of the cable (Ex: SC on one end of cable and LC on other end of cable)

Tools:

9: Do you need tools to help install, open, or splice your fiber cable? (Check One)





- Loose Tube Tool
- Central Tube Ribbon Tool
- Jacket Sheath Cutting Tool



Fiber Optic Color Code for Tight Buffers, Loose Tube (TIA/EIA-598)

Position	Colors
1	Blue
2	Orange
3	Green
4	Brown
5	Slate (Gray)
6	White
7	Red
8	Black
9	Yellow
10	Violet
11	Rose (Pink)
12	Aqua (Light Blue)

Fiber Optic Color Code for Jackets (TIA/EIA-598)

MAXCAP 300/550 - 50µm OM3		400, 800, LSZH, 525, 825, LSZH25, All interconnect series, riser, plenum and LSZH
MMF - 62.5/50µm, OM1/OM2		400, 800, LSZH, 525, 825, LSZH25, All interconnect series, riser, plenum and LSZH
Enhanced Singlemode including BB-XS		400, 800, LSZH, 525, 825, LSZH25, All interconnect series, riser, plenum and LSZH
Hybrid		400, 800, LSZH, 525, 825, LSZH25, All Indoor-outdoor cables and Outside Plant Cable regardless of fiber types

Multimode Fiber Specifications

Fiber Type	Fiber Class	1 Gbps Ethernet Max. Distance	10 Gbps Ethernet Max Distance	Bandwidth MHz-hm (OFL)	Indoor Cable Jacket Color
		850nm/1300nm	850nm/1300nm	850nm/1300nm	
62.5 µm-std	OM1	275m/550m	36m/300m	200/500	Orange
50 µm-std	OM2	550m/550m	82m/300	500/500	
50 µm-Maxcap 300	OM3	1000m/550m	300m/300m	1500/500	Aqua
50 µm-Maxcap 550	OM4	1100m/550m	550m/300m	3500/500	
Enhanced Singlemode ESM	OS1	> 2000 @ 1310nm	> 10000 @ 1310nm	NA	Yellow
Bendbright-XS Singlemode	OS1	> 2000 @ 1310nm	> 10000 @ 1310nm	NA	Yellow Dark Blue

Quality Policy

Draka is committed to understanding and exceeding both our internal and external customer requirements. We will earn our customer's trust by performing at the highest level of excellence in the areas of quality, service and reliability at all times. Our company will ensure this performance through the quality of our people and the tools and systems we use.

Quality Management Systems

Draka's TL9000 Quality Management System ensures processes are documented and that we stay focused on management responsibility, resource management, product realization and measurement/analysis/improvement in all areas.

TL9000

Draka Communications | Cable Solutions, Americas is TL9000 certified and is an active member of the QuEST Forum.

ISO9000

Draka Communications | Cable Solutions, Americas is ISO 9001:2000 registered at its Claremont, North Carolina operation.

ISO14001

Draka Communications | Cable Solutions, Americas is ISO 14001 registered at its Claremont, North Carolina operation.



Draka[™]

Draka Communications - Americas



VALUE
INNOVATION



2512 Penny Road
Claremont, NC 28610-0039
+1 800.879.9862
+1 828.459.9787

www.drakaamericas.com
sales@drakaamericas.com

 **Draka**TM
Draka Communications - Americas