

# RSR SERIES ALUMINUM WATERTIGHT CORD GRIPS

## Straight Body, External Conduit Thread

RSR Series Grips are used in conduit hubs or knock-outs at the point where the portable electrical cable is to be terminated. They provide an environmental seal against dirt, moisture, coolants, corrosive fumes, etc. and provide strain relief where undue strain on the cable would otherwise cause loosening or pull out at the individual wire terminals. This is accomplished when the tapered rubber bushing (grommet) is driven into a tapered seat in the grip body by threading down on the nut.

RSR Cord Grips provide exceptional corrosion resistance with its aluminum body and nut. Resistance to cutting oils (etc.), age hardening, compression set and normal temperature extremes is obtained through the use of high quality, oil resistant synthetic rubber (Neoprene type) for the bushing. An anti-friction washer is supplied between the nut and bushing for ease in compression. Machine cut threads prevent cross threading, insure smooth compression and water-tight make-up in conduit hubs.



Conduit Size	Cable Range	Complete Assembly Catalog Numbers	
		Cord Grip Only	Cord Grip With Mesh
1/4"	.125- .250	<b>RSR-0004</b>	<b>RSR-0004-E</b>
	.250- .375	<b>RSR-0006</b>	<b>RSR-0006-E</b>
	.375- .438	<b>RSR-0007*</b>	<b>RSR-0007-E</b>
3/8"	.125- .250	<b>RSR-004</b>	<b>RSR-004-E</b>
	.250- .375	<b>RSR-006</b>	<b>RSR-006-E</b>
	.375- .438	<b>RSR-007*</b>	<b>RSR-007-E</b>
1/2"	.125- .250	<b>RSR-1004</b>	<b>RSR-1004-E</b>
	.250- .375	<b>RSR-1006</b>	<b>RSR-1006-E</b>
	.375- .438	<b>RSR-1007</b>	<b>RSR-1007-E</b>
1/2"	.125- .250	<b>RSR-104</b>	<b>RSR-104-E</b>
	.250- .375	<b>RSR-106</b>	<b>RSR-106-E</b>
	.375- .500	<b>RSR-108</b>	<b>RSR-108-E</b>
	.500- .625	<b>RSR-110</b>	<b>RSR-110-E</b>
1/2"	.438- .500	<b>RSR-1208</b>	<b>RSR-1208-E</b>
	.438- .625	<b>RSR-1210</b>	<b>RSR-1210-E</b>
	.562- .750	<b>RSR-1212*</b>	<b>RSR-1212-E</b>
	.688- .812	<b>RSR-1213*</b>	<b>RSR-1213-E</b>
3/4"	.125- .250	<b>RSR-2104</b>	<b>RSR-2104-E</b>
	.250- .375	<b>RSR-2106</b>	<b>RSR-2106-E</b>
	.375- .500	<b>RSR-2108</b>	<b>RSR-2108-E</b>
	.500- .625	<b>RSR-2110</b>	<b>RSR-2110-E</b>
3/4"	.438- .500	<b>RSR-208</b>	<b>RSR-208-E</b>
	.438- .625	<b>RSR-210</b>	<b>RSR-210-E</b>
	.562- .750	<b>RSR-212</b>	<b>RSR-212-E</b>
	.688- .812	<b>RSR-213</b>	<b>RSR-213-E</b>
3/4"	.438- .625	<b>RSR-2310</b>	<b>RSR-2310-E</b>
	.562- .750	<b>RSR-2312</b>	<b>RSR-2312-E</b>
	.688- .875	<b>RSR-2314*</b>	<b>RSR-2314-E</b>
	.812- 1.000	<b>RSR-2316*</b>	<b>RSR-2316-E</b>

NOTE: Special coatings and bushing materials are available. Consult factory.

\*The cable may have to be stripped to pass through the bore of the body.

For O-Rings and Lock Nuts see bottom of page 141.



### Certification and Compliances

UL Standard 514  
File # E53599

CSA Standard C22.2 #18  
File # 28985

National Electrical Code  
Articles 400-10 and 400-14

NEMA Standards FB1-1983

Fed. Spec. W-C-586c

Mil. Spec. 100 and 130

### Notes:

Suitable for use in Hazardous Locations under NEC Sec. 501-4(b), 502-4(a)(2), and 503-3(a). For Class I, Div. 2; Class II, Div. 1 and 2; and Class III, Div. 1 and 2.

# RSR SERIES ALUMINUM WATERTIGHT CORD GRIPS (CONTINUED)

**RSR Straight Cord Grips Only Dimension Table**

Catalog Number*	Conduit Size	A Body Bore	B	C	D	E Body Hex	F Nut Dia.	Form Size
RSR-0000-W	1/4"	.34	.44	.59	1.50	.88	.99	1
RSR-000-W	3/8"	.46	.44	.59	1.50	.88	.99	1
RSR-1000-W	1/2"	.46	.44	.59	1.50	.88	.99	1
RSR-100-W	1/2"	.58	.53	.72	1.81	1.09	1.33	2
RSR-1200-W	1/2"	.62	.56	.86	2.06	1.38	1.52	3
RSR-2100-W	3/4"	.62	.56	.72	1.88	1.25	1.33	2
RSR-200-W	3/4"	.81	.56	.86	2.06	1.38	1.52	3
RSR-2300-W	3/4"	.81	.62	.97	2.31	1.56	1.70	4
RSR-300-W	1"	1.00	.62	.97	2.31	1.56	1.70	4
RSR-3500-W	1"	1.00	.69	1.25	2.78	2.16	2.50	5
RSR-400-W	1 1/4"	1.31	.69	1.25	2.78	2.16	2.50	5
RSR-500-W	1 1/2"	1.50	.69	1.25	2.78	2.16	2.50	5
RSR-5600-W	1 1/2"	1.50	.96	1.72	3.88	2.86	3.25	6
RSR-600-W	2"	1.84	.84	1.72	3.75	2.83	3.25	6
RSR-6700-W	2"	1.94	1.31	3.50	4.81	4.00	4.27	7
RSR-700-W	2 1/2"	2.31	1.31	3.50	4.81	4.00	4.27	7
RSR-8700-W	3"	2.31	1.31	3.50	4.81	4.00	4.27	7

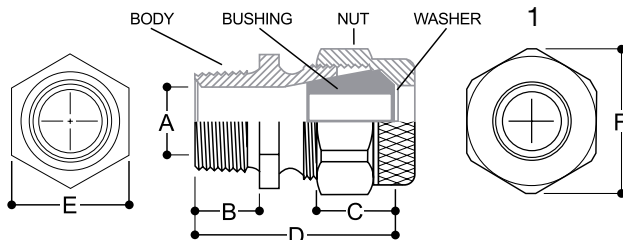
Catalog number of Body-Nut-Washer sub-assemblies are shown above.

Each of these can be used with a series of bushings.

To determine the dimensions of any straight bodied Cord Grip, complete with the Bushing listed, match the Conduit Size and Form No. with that shown above.

Example: RSR-007 Cord Grip is Conduit Size 3/8", Form No. 1. So is RSR-000-W. Both Would have the dimensions shown above. So would RSR-003, RSR-004, RSR-005, and RSR-006. Note: if the last two digits of the complete Cord Grip catalog number are replaced with "00" and "-W" is added, the above number results.

Dimension A is the minimum Body Bore. Other dimensions are nominal.  
Dimension D is with the Nut snug but Bushing uncompressed.  
Dimension E is across the Body hex. flats. Forms 6 & 7 are octagonal.  
Dimension F is the outside diameter of the Nut except at the wrench lugs.  
Dimensions are approximate.



For O-Rings and Lock Nuts see bottom of page 141.

		Complete Assembly Catalog Numbers	
Conduit Size	Cable Range	Cord Grip Only	Cord Grip With Mesh
1"	.438- .625	<b>RSR-310</b>	<b>RSR-310-E</b>
	.562- .750	<b>RSR-312</b>	<b>RSR-312-E</b>
	.688- .875	<b>RSR-314</b>	<b>RSR-314-E</b>
	.812- 1.000	<b>RSR-316</b>	<b>RSR-316-E</b>
1"	.875- 1.000	<b>RSR-3516</b>	<b>RSR-3516-E</b>
	1.000- 1.125	<b>RSR-3518</b>	<b>RSR-3518-E</b>
	1.125- 1.250	<b>RSR-3520*</b>	<b>RSR-3520-E</b>
	1.250- 1.375	<b>RSR-3522*</b>	<b>RSR-3522-E</b>
1 1/4"	.562- .688	<b>RSR-411</b>	
	.688- .812	<b>RSR-413</b>	
	.750- .875	<b>RSR-414</b>	-
	.875- 1.000	<b>RSR-416</b>	<b>RSR-416-E</b>
	1.000- 1.125	<b>RSR-418</b>	<b>RSR-418-E</b>
	1.125- 1.250	<b>RSR-420*</b>	<b>RSR-420-E</b>
1 1/2"	1.250- 1.375	<b>RSR-422*</b>	<b>RSR-422-E</b>
	.562- .688	<b>RSR-511</b>	
	.688- .812	<b>RSR-513</b>	
	.750- .875	<b>RSR-514</b>	-
	.875- 1.000	<b>RSR-516</b>	<b>RSR-516-E</b>
	1.000- 1.125	<b>RSR-518</b>	<b>RSR-518-E</b>
1 1/2"	1.125- 1.250	<b>RSR-520</b>	<b>RSR-520-E</b>
	1.250- 1.375	<b>RSR-522</b>	<b>RSR-522-E</b>
	1.250- 1.375	<b>RSR-5622</b>	<b>RSR-5622-E</b>
	1.438- 1.562	<b>RSR-5625</b>	<b>RSR-5625-E</b>
	1.562- 1.688	<b>RSR-5627*</b>	<b>RSR-5627-E</b>
	1.688- 1.812	<b>RSR-5629*</b>	<b>RSR-5629-E</b>
2"	1.250- 1.375	<b>RSR-622</b>	<b>RSR-622-E</b>
	1.438- 1.562	<b>RSR-625</b>	<b>RSR-625-E</b>
	1.562- 1.688	<b>RSR-627</b>	<b>RSR-627-E</b>
	1.688- 1.812	<b>RSR-629</b>	<b>RSR-629-E</b>
	1.688- 1.812	<b>RSR-6729</b>	<b>RSR-6729-E</b>
	1.812- 1.938	<b>RSR-6731</b>	<b>RSR-6731-E</b>
2"	1.938- 2.062	<b>RSR-6733*</b>	<b>RSR-6733-E</b>
	2.062- 2.188	<b>RSR-6735*</b>	<b>RSR-6735-E</b>
	2.188- 2.312	<b>RSR-6737*</b>	<b>RSR-6737-E</b>
	2.312- 2.438	<b>RSR-6739*</b>	<b>RSR-6739-E</b>
	1.688- 1.812	<b>RSR-729</b>	<b>RSR-729-E</b>
	1.812- 1.938	<b>RSR-731</b>	<b>RSR-731-E</b>
2 1/2"	1.938- 2.062	<b>RSR-733</b>	<b>RSR-733-E</b>
	2.062- 2.188	<b>RSR-735</b>	<b>RSR-735-E</b>
	2.188- 2.312	<b>RSR-737</b>	<b>RSR-737-E</b>
	2.312- 2.438	<b>RSR-739*</b>	<b>RSR-739-E</b>
	1.688- 1.812	<b>RSR-8729</b>	<b>RSR-8729-E</b>
	1.812- 1.938	<b>RSR-8731</b>	<b>RSR-8731-E</b>
3"	1.938- 2.062	<b>RSR-8733</b>	<b>RSR-8733-E</b>
	2.062- 2.188	<b>RSR-8735</b>	<b>RSR-8735-E</b>
	2.188- 2.312	<b>RSR-8737</b>	<b>RSR-8737-E</b>
	2.312- 2.438	<b>RSR-8739*</b>	<b>RSR-8739-E</b>

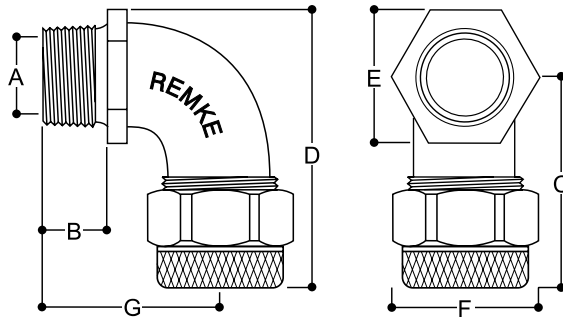
\*The cable may have to be stripped to pass through the bore of the body.



# RSR SERIES ALUMINUM WATERTIGHT 90° CORD GRIPS

## 90° Body, External Conduit Thread

The cord grip assemblies on this page are the same as the RSR cord grips listed previously except for the body, which instead of being straight is 90 degree. The descriptive information for RSR cord grips is applicable.



Conduit Size	Cable Range	Complete Assembly Catalog Numbers	
		Cord Grip Only	Cord Grip With Mesh
3/8"	.125- .250	RSR-9004	RSR-9004-E
	.250- .375	RSR-9006	RSR-9006-E
	.375- .438	RSR-9007	RSR-9007-E
1/2"	.125- .250	RSR-91004	RSR-91004-E
	.250- .375	RSR-91006	RSR-91006-E
	.375- .438	RSR-91007	RSR-91007-E
1/2"	.125- .250	RSR-9104	RSR-9104-E
	.250- .375	RSR-9106	RSR-9106-E
	.375- .500	RSR-9108	RSR-9108-E
	.500- .625	RSR-9110*	RSR-9110-E
3/4"	.438- .500	RSR-9208	RSR-9208-E
	.438- .625	RSR-9210	RSR-9210-E
	.562- .750	RSR-9212	RSR-9212-E
	.688- .812	RSR-9213*	RSR-9213-E
1"	.438- .625	RSR-9310	RSR-9310-E
	.562- .750	RSR-9312	RSR-9312-E
	.688- .875	RSR-9314	RSR-9314-E
	.812- 1.000	RSR-9316	RSR-9316-E
1 1/4"	.562- .688	RSR-9411	
	.688- .812	RSR-9413	
	.750- .875	RSR-9414	-
	.875- 1.000	RSR-9416	RSR-9416-E
	1.000- 1.125	RSR-9418	RSR-9418-E
	1.125- 1.250	RSR-9420	RSR-9420-E
	1.250- 1.375	RSR-9422*	RSR-9422-E
1 1/2"	.562- .688	RSR-9511	
	.688- .812	RSR-9513	
	.750- .875	RSR-9514	-
	.875- 1.000	RSR-9516	RSR-9516-E
	1.000- 1.125	RSR-9518	RSR-9518-E
	1.125- 1.250	RSR-9520	RSR-9520-E
	1.250- 1.375	RSR-9522	RSR-9522-E
	1.438- 1.562	RSR-9525	RSR-9525-E
	1.562- 1.688	RSR-9527	RSR-9527-E
	1.688- 1.812	RSR-9529	RSR-9529-E
2"	1.250- 1.375	RSR-9622	RSR-9622-E
	1.438- 1.562	RSR-9625	RSR-9625-E
	1.562- 1.688	RSR-9627	RSR-9627-E
	1.688- 1.812	RSR-9629	RSR-9629-E

\*The cable may have to be stripped to pass through the bore of the body.

## RSR 90° Cord Grips Only Dimension Table

Catalog Number	Conduit Size	A Body Bore	B	C	D	E Body Hex.	F Nut Dia.	G	Form Size
RSR-9000-W	3/8"	.45	.44	1.51	2.00	.98	.96	1.31	1
RSR-91000-W	1/2"	.45	.44	1.51	2.00	.98	.96	1.31	1
RSR-9100-W	1/2"	.58	.56	1.88	2.39	1.03	1.26	1.50	2
RSR-9200-W	3/4"	.76	.63	2.25	2.88	1.25	1.55	1.99	3
RSR-9300-W	1"	.99	.63	2.41	3.13	1.44	1.74	2.00	4
RSR-9400-W	1 1/4"	1.28	.69	3.19	4.41	2.13	2.47	2.69	5
RSR-9500-W	1 1/2"	1.40	.69	3.19	4.41	2.13	2.47	2.69	5
RSR-9600-W	2"	1.90	.81	4.03	5.56	2.81	2.97	3.19	6

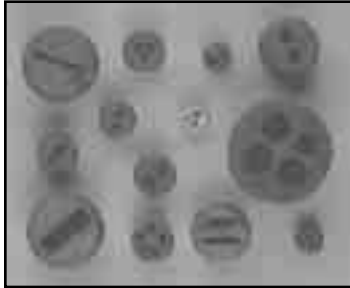
\* See also notes on Dimension Table for RSR Straight Body.

Dimension E is across flats.

For O-Rings and Lock Nuts see bottom of page 141

## MULTIPLE HOLE BUSHINGS

In addition to catalogued items, custom multiple hole bushings are available for all cord grips. Consult factory for pricing and lead times.



(Bushing Only) Catalog Numbers	Full Assembly Part Number	Number of Holes	Diameter Each Hole	Hub Size
SRB-00964-2	RSR-00964-2	2	.141"	3/8"
SRB-00964-2	RSR-100964-2	2	.141"	1/2"
SRB-104-2	RSR-104-2	2	.250"	1/2"
SRB-10532-2	RSR-10532-2	2	.156"	1/2"
SRB-10732-2	RSR-10732-2	2	.218"	1/2"
SRB-10932-2	RSR-10932-2	2	.281"	1/2"
SRB-201764-2	RSR-1201764-2	2	.265"	1/2"
SRB-201964-2	RSR-1201964-2	2	.296"	1/2"
SRB-205-2	RSR-1205-2	2	.312"	1/2"
SRB-2073-2	RSR-120732-2	2	.218"	1/2"
SRB-104.3	RSR-104-3	3	.250"	1/2"
SRB-10532-3	RSR-10532-3	3	.156"	1/2"
SRB-10732-3	RSR-10732-3	3	.218"	1/2"
SRB-109323	RSR-10932-3	3	.281"	1/2"
SRB-201764-3	RSR-1201764-3	3	.265"	1/2"
SRB-20516-3	RSR-120516-3	3	.312"	1/2"
SRB-10532-4	RSR-10532-4	4	.156"	1/2"
SRB-203-4	RSR-1203-4	4	.187"	1/2"
SRB-20732-4	RSR-120732-4	4	.218"	1/2"
SRB-100-UF1	RSR-100-WUF	1	OVAL: .425" x .225"	1/2"
SRB-100-UF2	RSR-100-WUF	2	OVAL: .610" x .225"	1/2"
SRB-204-2	RSR-1204-2	2	.250"	3/4"
SRB-10532-2	RSR-210532-2	2	.156"	3/4"
SRB-10732-2	RSR-210732-2	2	.218"	3/4"
SRB-10932-2	RSR-210932-2	2	.281"	3/4"
SRB-201764-2	RSR-201764-2	2	.265"	3/4"
SRB-201964-2	RSR-201964-2	2	.296"	3/4"

(Bushing Only) Catalog Numbers	Full Assembly Part Number	Number of Holes	Diameter Each Hole	Hub Size
SRB-202164-2	RSR202164-2	2	.328"	3/4"
SRB-202164-2	RSR1202164-2	2	.328"	3/4"
SRB-205-2	RSR-205-2	2	.312"	3/4"
SRB-20732-2	RSR-20732-2	2	.218"	3/4"
SRB-301964-2	RSR-2301964-2	2	.296"	3/4"
SRB-306-2	RSR-2306-2	2	.375"	3/4"
SRB-10532-3	RSR-210532-3	3	.156"	3/4"
SRB-10732-3	RSR-210732-3	3	.218"	3/4"
SRB-10932-3	RSR-210932-3	3	.281"	3/4"
SRB-201764-3	RSR-201764-3	3	.265"	3/4"
SRB-20516-3	RSR-20516-3	3	.312"	3/4"
SRB-20932-3	RSR-20932-3	3	.281"	3/4"
SRB-20932-3	RSR-120932-3	3	.281"	3/4"
SRB-305-3	RSR-2305-3	3	.312"	3/4"
SRB-10532-4	RSR-210532-4	4	.156"	3/4"
SRB-203-4	RSR-203-4	4	.187"	3/4"
SRB-20732-4	RSR-20732-4	4	.218"	3/4"
SRB-301964-4	RSR-2301964-4	4	.296"	3/4"
SRB-301964-5	RSR-2301964-5	5	.296"	3/4"
SRB-304-5	RSR-2304-5	5	.250"	3/4"
SRB-301964-2	RSR-301964-2	2	.296"	1"
SRB-306-2	RSR-306-2	2	.375"	1"
SRB-305-3	RSR-305-3	3	.312"	1"
SRB-300-3SP1	RSR-300-3SP1	3	.300"	1"
SRB-300-3SP2	RSR-300-3SP2	3	.225"	1"
SRB-301964-4	RSR-301964-4	4	.296"	1"
SRB-300-4SP1	RSR-300-4SP1	4	.220"	1"
SRB-302964-5	RSR-301964-5	5	.296"	1"
SRB-304-5	RSR-304-5	5	.250"	1"
SRB-300-F1	RSR-300-WUF	1	OVAL: .880" x .275"	1"
SRB-300-F2	RSR-300-WUF	2	OVAL: .700" x .225"	1"
SRB-400-2	RSR-400-2	2	.500"/.375	1 1/4"
SRB-408-2	RSR-408-2	2	.500"	1 1/4"
SRB-410-2	RSR-410-2	2	.625"	1 1/4"
SRB-406-3	RSR-406-3	3	.375"	1 1/4"
SRB-500-2	RSR-500-2	2	.500"/.375"	1 1/2"
SRB-508-2	RSR-508-2	2	.500"	1 1/2"
SRB-510-2	RSR-510-2	2	.625"	1 1/2"
SRB-506-3	RSR-506-3	3	.375"	1 1/2"

F

## ACCESSORIES

These seals and locknuts can be used with all external conduit threads, except Pg and I.S.O. metric threads.

Seal O-Rings	Size	Locknuts
SOR-38	3/8"	LN-38
SOR-1-VNT	1/2"	LN-50
SOR-2	3/4"	LN-75
SOR-3	1"	LN-100
SOR-4	1 1/4"	LN-125
SOR-51	1 1/2"	LN-150
SOR-16	2"	LN-200
	2 1/2"	LN-250
	3"	LN-300

## RSRS SERIES STEEL WATERTIGHT CORD GRIPS

### Straight Body, External Conduit Thread

The RSRS Series is similar to the RSR Series except for the material of the body and compression nut, which is plated steel. Also, the nut is hexagonal for part of its length and round with a knurl for the remainder.



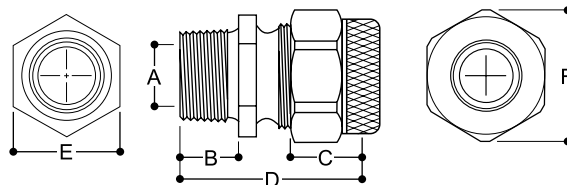
Conduit Size	Cable Range	Complete Assembly Catalog Numbers	
		Cord Grip Only	Cord Grip With Mesh
3/8"	.125- .250	<b>RSRS-004</b>	<b>RSRS-004-E</b>
	.250- .375	<b>RSRS-006</b>	<b>RSRS-006-E</b>
	.375- .438	<b>RSRS-007</b>	<b>RSRS-007-E</b>
1/2"	.125- .250	<b>RSRS-104</b>	<b>RSRS-104-E</b>
	.250- .375	<b>RSRS-106</b>	<b>RSRS-106-E</b>
	.375- .500	<b>RSRS-108</b>	<b>RSRS-108-E</b>
	.500- .625	<b>RSRS-110</b>	<b>RSRS-110-E</b>
3/4"	.438- .500	<b>RSRS-208</b>	<b>RSRS-208-E</b>
	.438- .625	<b>RSRS-210</b>	<b>RSRS-210-E</b>
	.562- .750	<b>RSRS-212</b>	<b>RSRS-212-E</b>
	.688- .812	<b>RSRS-213*</b>	<b>RSRS-213-E</b>
1"	.438- .625	<b>RSRS-310</b>	<b>RSRS-310-E</b>
	.562- .750	<b>RSRS-312</b>	<b>RSRS-312-E</b>
	.688- .875	<b>RSRS-314</b>	<b>RSRS-314-E</b>
	.812- 1.000	<b>RSRS-316</b>	<b>RSRS-316-E</b>

\*The cable may have to be stripped to pass through the bore of the body.

## RSSS SERIES STAINLESS STEEL WATERTIGHT CORD GRIPS

### Straight Body, External Conduit Thread

The RSSS Series Stainless Steel differs from the RSRS in its use of stainless steel for the body and compression nut. As the surfaces of the body and nut are the only exposed metal parts, by using RSSS Series, the maximum in corrosion resistance is obtained.



Conduit Size	Cable Range	Complete Assembly Catalog Numbers	
		Cord Grip Only	Cord Grip With Mesh
3/8"	.125- .250	<b>RSSS-004</b>	<b>RSSS-004-E</b>
	.250- .375	<b>RSSS-006</b>	<b>RSSS-006-E</b>
	.375- .438	<b>RSSS-007</b>	<b>RSSS-007-E</b>
1/2"	.125- .250	<b>RSSS-104</b>	<b>RSSS-104-E</b>
	.250- .375	<b>RSSS-106</b>	<b>RSSS-106-E</b>
	.375- .500	<b>RSSS-108</b>	<b>RSSS-108-E</b>
	.500- .625	<b>RSSS-110*</b>	<b>RSSS-110-E</b>
3/4"	.438- .500	<b>RSSS-208</b>	<b>RSSS-208-E</b>
	.438- .625	<b>RSSS-210</b>	<b>RSSS-210-E</b>
	.562- .750	<b>RSSS-212</b>	<b>RSSS-212-E</b>
	.688- .812	<b>RSSS-213*</b>	<b>RSSS-213-E</b>

\*The cable may have to be stripped to pass through the bore of the body.

### RSRS Steel & RSSS Stainless Steel Cord Grips Only Dimension Table

Catalog Number*	Catalog Number*	Conduit Size	A Body Bore	B	C	D	E Body Hex.	F Nut Dia.	Form Size
RSRS-000-W	RSSS-000-W	3/8"	.47	.44	.56	1.47	.88	.88	1
RSRS-100-W	RSSS-100-W	1/2"	.62	.56	.69	1.81	1.00	1.12	2
RSRS-200-W	RSSS-200-W	3/4"	.81	.56	.85	2.05	1.25	1.37	3
RSRS-300-W		1"	1.00	.63	.94	2.29	1.43	1.56	4

See also note on RSR Dimension Table.

## ECONOMY CONNECTORS

### Steel Cord Grip Connectors



LR 49636



E105706

- Screw Machined Steel Fittings
- CSA and UL Approved
- Neoprene Grommet
- Compact Size
- Label Shows Cable Diameter
- Zinc Plated

MODEL #	HUB SIZE	FOR CABLE DIAMETER
CG50A250	1/2" CORD GRIP	.15-.25"
CG50A350	1/2" CORD GRIP	.26-.35"
CG50A450	1/2" CORD GRIP	.36-.45"
CG50A560	1/2" CORD GRIP	.46-.56"
CG50A650	1/2" CORD GRIP	.57-.65"
CG75A250	3/4" CORD GRIP	.15-.25"
CG75A350	3/4" CORD GRIP	.26-.35"
CG75A450	3/4" CORD GRIP	.36-.45"
CG75A560	3/4" CORD GRIP	.46-.56"
CG75A650	3/4" CORD GRIP	.57-.65"
CG75B750	3/4" CORD GRIP	.66-.75"
CG75B850	3/4" CORD GRIP	.76-.85"
CG100B560	1" CORD GRIP	.46-.56"
CG100B650	1" CORD GRIP	.57-.65"
CG100B750	1" CORD GRIP	.66-.75"
CG100B850	1" CORD GRIP	.76-.85"
CG100C950	1" CORD GRIP	.86-.95"
CG100C1050	1" CORD GRIP	.96-1.05"

### Spiro-Grip Connectors



LR 49636



E105706

- Complete with lock-nut and sealing ring

MODEL #	HUB SIZE	FOR CABLE DIAMETER
SPG50-1030	1/2" CORD GRIP BLACK	.10-.30"
SPG50-2047	1/2" CORD GRIP BLACK	.20-.47"
SPG50-3875	1/2" CORD GRIP BLACK	.38-.75"
SPG75-2047	3/4" CORD GRIP BLACK	.20-.47"
SPG75-3875	3/4" CORD GRIP BLACK	.38-.75"

\* Non-metallic

### Metallic Liquid Tight Conduit Connectors



LR 49636



E60812

MODEL #	CONDUIT TYPE	FOR CONDUIT DIAMETER
LTM-38	STRAIGHT	3/8"
LTM-50	STRAIGHT	1/2"
LTM-75	STRAIGHT	3/4"
LTM-100	STRAIGHT	1"
LTM-9038	90 DEGREE	3/8"
LTM-9050	90 DEGREE	1/2"
LTM-9075	90 DEGREE	3/4"
LTM-90100	90 DEGREE	1"

\* For Type B conduit

\* Zinc die cast material



# RPG WATERTIGHT CORD GRIPS WITH PG METRIC THREADS

## Straight Body, External Conduit Thread

These liquid-tight RPG Series Cord Grips for portable electrical cable are the same as our standard product as listed on pages 138 through 139 of our catalog except that the external tapered conduit thread for installation in the knockout or hub of a box or device is replaced with a Pg type metric thread for threading into the mating internal thread of a box or device so equipped.



Pg Metric Thread	Cable Range	Catalog Numbers	
		Cord Grip Only	Cord Grip With Mesh
Pg11	.125- .250	<b>RPG-11104</b>	<b>RPG-11104-E</b>
	.250- .375	<b>RPG-11106</b>	<b>RPG-11106-E</b>
	.375- .500	<b>RPG-11108</b>	<b>RPG-11108-E</b>
	.500- .625	<b>RPG-11110</b>	<b>RPG-11110-E</b>
Pg13	.125- .250	<b>RPG-13104</b>	<b>RPG-13104-E</b>
	.250- .375	<b>RPG-13106</b>	<b>RPG-13106-E</b>
	.375- .500	<b>RPG-13108</b>	<b>RPG-13108-E</b>
	.500- .625	<b>RPG-13110</b>	<b>RPG-13110-E</b>
Pg16	.438- .500	<b>RPG-16208</b>	<b>RPG-16208-E</b>
	.437- .625	<b>RPG-16210</b>	<b>RPG-16210-E</b>
	.562- .750	<b>RPG-16212</b>	<b>RPG-16212-E</b>
	.687- .812	<b>RPG-16213</b>	<b>RPG-16213-E</b>
Pg21	.437- .625	<b>RPG-21310</b>	<b>RPG-21310-E</b>
	.562- .750	<b>RPG-21312</b>	<b>RPG-21312-E</b>
	.687- .875	<b>RPG-21314</b>	<b>RPG-21314-E</b>
	.812-1.000	<b>RPG-21316</b>	<b>RPG-21316-E</b>
Pg29	.438- .625	<b>RPG-29310</b>	<b>RPG-29310-E</b>
	.562- .750	<b>RPG-29312</b>	<b>RPG-29312-E</b>
	.688- .875	<b>RPG-29314</b>	<b>RPG-29314-E</b>
	.812-1.000	<b>RPG-29316</b>	<b>RPG-29316-E</b>
	.875-1.000	<b>RPG-29516</b>	<b>RPG-29516-E</b>
	1.000-1.125	<b>RPG-29518</b>	<b>RPG-29518-E</b>
	1.250-1.275	<b>RPG-29520</b>	<b>RPG-29520-E</b>
1.250-1.375	<b>RPG-29522</b>	<b>RPG-29522-E</b>	
Pg36	.875-1.000	<b>RPG-36516</b>	<b>RPG-36516-E</b>
	1.000-1.125	<b>RPG-36518</b>	<b>RPG-36518-E</b>
	1.125-1.250	<b>RPG-36520</b>	<b>RPG-36520-E</b>
	1.250-1.375	<b>RPG-36522</b>	<b>RPG-36522-E</b>

Consult factory for price and availability.  
\*Larger sizes available upon request.

## Thread Specifications

These are steel conduit thread per DIN 40430 (European Standard). Detailed thread specifications are available upon request. Taps are readily available. The PG 7 fits a US 1/2-20 UNC thread.

Thread Size	PG 7	PG 9	PG 11	PG 13	PG 16	PG 21	PG 29	PG 36	PG 42	PG 48
Major Dia. (mm)	12.5	15.2	18.6	20.4	22.5	28.3	37.0	47.0	54.0	59.3
Pitch (mm)	1.27	1.41	1.41	1.41	1.41	1.59	1.59	1.59	1.59	1.59

# RSP SERIES WATERTIGHT NON-METALLIC CORD GRIPS

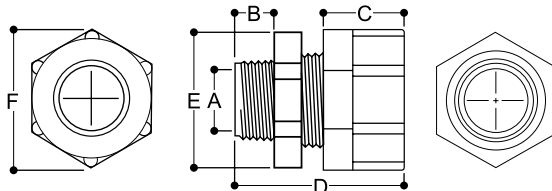
## Straight Body or 90° Body, External Conduit Thread

RSP Series Non-Metallic Cord Grips are used in conduit hubs or knockouts at the point where the portable electrical cord is to be terminated. They provide strain relief on the cord, are extremely corrosion resistant, and provide an environmental seal against dirt, moisture, coolants, fumes, etc.

These grips consist of a body and nut made of light grey durable nylon, compression bushing made of high quality, oil resistant rubber (Neoprene type), anti-friction washer made of nylon. Wire mesh is stainless steel.



**NEW!**



Conduit Size	Cable Range	Complete Assembly Catalog Numbers	
		Cord Grip Only	Cord Grip With Mesh
3/8"	.125- .250	<b>RSP-004</b>	<b>RSP-0004-E</b>
	.250- .375	<b>RSP-006</b>	<b>RSP-006-E</b>
	.375- .438	<b>RSP-007</b>	<b>RSP-007-E</b>
1/2"	.125- .250	<b>RSP-104</b>	<b>RSP-104-E</b>
	.250- .375	<b>RSP-106</b>	<b>RSP-106-E</b>
	.375- .500	<b>RSP-108</b>	<b>RSP-108-E</b>
	.500- .625	<b>RSP-110</b>	<b>RSP-110-E</b>
3/4"	.438- .500	<b>RSP-208</b>	<b>RSP-208-E</b>
	.438- .625	<b>RSP-210</b>	<b>RSP-210-E</b>
	.562- .750	<b>RSP-212</b>	<b>RSP-212-E</b>
	.688- .812	<b>RSP-213</b>	<b>RSP-213-E</b>
<b>90° Body</b>			
1/2"	.125- .250	<b>RSP-9104</b>	<b>RSP-9104-E</b>
	.250- .375	<b>RSP-9106</b>	<b>RSP-9106-E</b>
	.375- .500	<b>RSP-9108</b>	<b>RSP-9108-E</b>
	.500- .625	<b>RSP-9110</b>	<b>RSP-9110-E</b>
3/4"	.438- .625	<b>RSP-9210</b>	<b>RSP-9210-E</b>
	.562- .750	<b>RSP-9212</b>	<b>RSP-9212-E</b>
	.688- .812	<b>RSP-9213</b>	<b>RSP-9213-E</b>
<b>Non-Metallic Cord Grips For "UF" Cable</b>			
1/2"	.425 x .225	<b>RSP-100-WUF1</b>	
	.610 x .225	<b>RSP-100-WUF2</b>	

\*The cable may have to be stripped to pass through the bore of the body.

**F**

## RSP Straight Cord Grips Dimension Table

Conduit Size	A Body Bore	B	C	D	E Body Hex.	F Nut Dia.
3/8"	.44	.49	.70	1.63	.94	.94
1/2"	.57	.50	.88	2.01	1.12	1.25
3/4"	.76	.56	.88	2.10	1.38	1.50

Dimension A is the minimum Body Bore. Other dimensions are nominal.

Dimension D is with the Nut snug but bushing uncompressed.

Dimension E is across the Straight Body hex. flats.

Dimension F is across Nut hex. flats.

Dimensions are approximate.

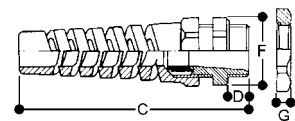
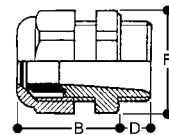
# DOME & FLEX-PROTECTING LIQUID-TIGHT STRAIN RELIEF CONNECTORS

## Applications & Specifications

These Polyamide strain relief connectors are resistant to salt water, weak acids, weak alkalis, alcohol, esters, ketones, ether, gasoline, mineral oil, animal and vegetable oil and meet IP68 specifications for liquid tight. They can be utilized underwater to 300 feet, underground for direct burial cables, fiber optics, computers, control cabinets, instruments, medical/dental equipment, car washes, hot tubs, and carpet cleaning machines.

They are easily installed and 10 sizes accommodate diameters from 1/16" to 1-3/4". No disassembly required, simply push cable or tubing through installed strain relief connector and tighten dome nut.

**Protection Class:** IP68, 5 bar  
**Materials:** Polyamide 6 neoprene seal  
**Operating Temperature:** Up to +150°C intermittent  
**Temperature Range:** -30°C to 80°C permanent



CATALOG NUMBERS		Cable or Tubing Range	Thread Type Size	DIMENSIONS					LOCKING NUTS (Polyamide)			
Dome Connector	Flex Connector			Clearance Hole +.010	B Max O.A Length (Dome)	C Max O.A. Length (Flex)	D Thread Length	F Wrenching Flats	PART NUMBER Locking Nut (Black)	THREAD TYPE & SIZE	DIMENSIONS (INCHES)	
				G Thickness	Wrenching Flat							
RD07AA RD07AR	RF07AA RF07AR	.11-.26 .07-.20	PG 7	.49	1.17	2.50	.31	.59	NP-07-BK	PG 7 1/4" NPT	.20	.75
RD09AA RD09AR	RF09AA RF09AR	.15-.32 .07-.20	PG 9	.60	1.34	3.00	.31	.75	NP-09-BK	PG 9	.20	.87
*RD09NA RD09NR	RF09NA RF09NR	.20-.39 .12-.28	3/8" NPT	.68	1.59	3.25	.59	.87	NN-09-BK	3/8" NPT	.27	.94
RD11AA RD11AR	RF11AA RF11AR	.19-.39 .11-.28	PG 11	.73	1.50	3.50	.31	.88	NP-11-BK	PG 11	.20	.94
RD13AA RD13AR	RF13AA RF13AR	.23-.47 .19-.35	PG 13	.80	1.56	4.00	.34	.94	NP-13-BK	PG 13.5	.24	1.06
*RD13NA *RD13NR	RF13NA RF13NR	.24-.47 .20-.35	1/2" NPT	.83	1.77	4.22	.59	.94	NN-13-BK	1/2" NPT	.27	1.06
*RD16NA RD16NR	RF16NA RF16NR	.39-.55 .27-.47	1/2" NPT	.89	1.86	4.61	.59	1.06	NN-13-BK	1/2" NPT	.27	1.06
RD16AA RD16AR	RF16AA RF16AR	.39-.55 .27-.47	PG 16	.89	1.69	4.44	.39	1.06	NP-16-BK	PG 16	.24	1.18
RD21AA RD21AR	RF21AA RF21AR	.51-.71 .35-.63	PG 21	1.12	1.81	5.00	.44	1.30	NP-21-BK	PG 21	.27	1.41
*RD21NA *RD21NR	RF21NA RF21NR	.51-.71 .35-.63	3/4" NPT	1.05	1.97	5.12	.59	1.30	NN-21-BK	3/4" NPT	.27	1.26
RD29AA RD29AR		.70-.98 .47-.79	PG 29	1.47	2.03	—	.44	1.65	NP-29-BK	PG 29	.26	1.81
RD29NA RD29NR		.71-.98 .47-.79	1" NPT	1.35	2.24	—	.71	1.65	NN-29-BK	1" NPT	.27	1.57
RD36LA RD36LR		1.26-1.87 1.02-1.79	1 1/4" NPT	1.65	2.15	—	.71	2.09				
†RD36AA †RD36AR		.86-1.25 .78-1.02	PG 36	1.85	2.00	—	.51	2.09	NP-36-BK	PG 36	.31	2.36
†RD36NA †RD36NR		.86-1.26 .78-1.02	1 1/2" NPT	1.92	2.60	—	.51	2.09				

\*For Gray, add suffix -GY to part number.

† UL E103997

† CSA LR93876M2

† VDE 71339



UL E  
199260



CSA LR  
115116

# DOME LIQUID-TIGHT STRAIGHT NICKEL PLATED BRASS STRAIN RELIEF CONNECTOR

## Specifications

### Pressure Rating:

150 PSIG (10 BAR) NEMA 4X or 6 (submersible) IP68

### Materials:

Body, Dome nut & Locking nut: Nickel plated brass

Spring (Flex extension): Stainless Steel

Splined Bushing: Nylon 6/6

Form Seal & O-Ring: Buna-N

### Operating Temperature:

Static: -40°F to 212°F (-40°C to 120°C)

Short Term Exposure: 248,F (120°C)



Catalog Numbers	Cable Range  (Inches)	Thread Type Size	DIMENSIONS (INCHES)				Locking Nuts (Nickel Plated Brass)					
			Clearance Hole +.10/.000	Body Height Dome Fitting	Thread Length Fitting	Wrenching Flats	PART NUMBER Locking Nut	THREAD TYPE & SIZE	DIMENSIONS (INCHES)			
									Thickness	Wrenching Flats		
Dome Fitting												
BR07AA BR07AR	.11-.26 .08-.20	PG 7 1/4" NPT	.49	.75	.20	.55	NP-07-BR	PG7/ 1/4" NPT	.11	.59		
BR09AA BR09AR	.16-.31 .08-.24	PG 9	.60	.79	.24	.67	NP-09-BR	PG 9	.11	.71		
BR09NA BR09NR	.16-.31 .08-.24	3/8" NPT	.68	.79	.59	.67/.74	NN-09-BR	3/8" NPT	.14	.75		
BR11AA BR11AR	.20-.39 .11-.28	PG 11	.73	.83	.24	.79	NP-11-BR	PG 11	.12	.83		
BR13AA BR13AR	.24-.47 .20-.35	PG 13.5	.80	.87	.26	.87	NP-13-BR	PG 13.5	.12	.91		
BR13NA BR13NR	.24-.47 .20-.35	1/2" NPT	.83	.87	.51	.87/.94	NN-13-BR	1/2" NPT	.14	.94		
BR16AA BR16AR	.39-.56 .28-.47	PG 16	.88	.91	.26	.94	NP-16-BR	PG 16	.12	1.02		
BR21AA BR21AR	.51-.71 .35-.63	PG 21	1.12	.98	.28	1.18	NP-21-BR	PG 21	.14	1.26		
BR21NA BR21NR	.51-.71 .35-.63	3/4" NPT	1.05	.98	.51	1.18	NN-21-BR	3/4" NPT	.18	1.18		
BR29AA BR29AR	.71-.98 .51-.79	PG 29	1.47	1.14	.31	1.57	NP-29-BR	PG 29	.16	1.61		
BR29NA BR29NR	.71-.98 .51-.79	1" NPT	1.35	1.14	.75	1.57						
BR36AA BR36AR	.86-1.26 .79-1.02	PG 36	1.85	1.38	.31	1.97	NP-36-BR	PG 36	.20	2.01		

UL E103997  
CSA LR93876M2  
VDE 71339

