

# INSTRUCTIONS



## **A0312** **iBus Wall-Dock for Distributed Audio**



**iBus™**  
BY ● CHANNEL VISION™

©2007 CHANNEL VISION TECHNOLOGY

The **A0312** is a docking station specially designed for Apple® iPods® with dock connectors. The attractive wall mount remains unobtrusive while not in use, yet its support ledge with integrated dock connector slides out easily, ready to dock your iPod at all times. (See Made For section on page 3 for a complete list of compatible iPods.)

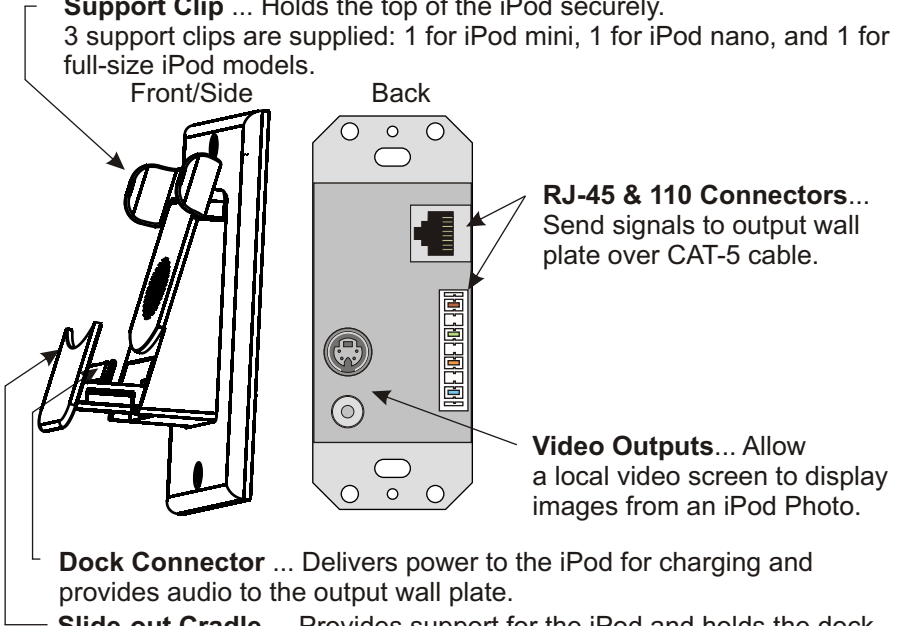
**Features:**

- Provides a balanced line level audio output
- Supports IR control: compatible with A0501 or Apple Remote
- Charges the iPod
- Allows viewing of iPod videos on a TV

**Wall Dock**

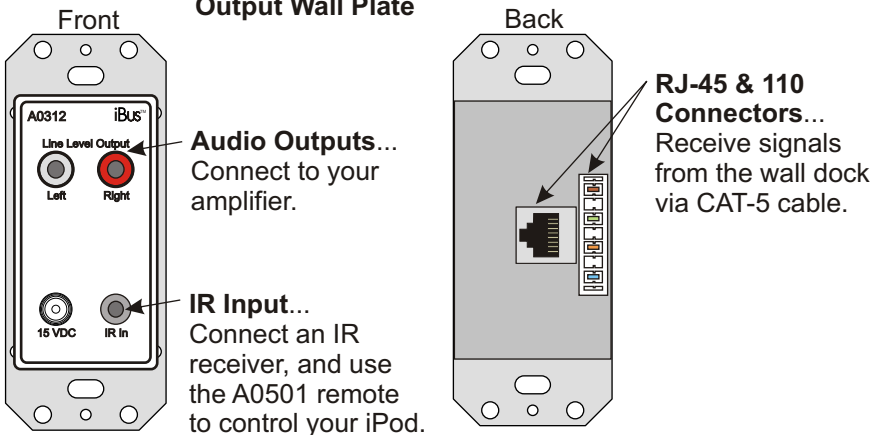
**Support Clip ...** Holds the top of the iPod securely.

3 support clips are supplied: 1 for iPod mini, 1 for iPod nano, and 1 for full-size iPod models.



**Slide-out Cradle ...** Provides support for the iPod and holds the dock connector. The support ledge slides into the A0312 when not in use.

**Output Wall Plate**



# Compatibility

## iPod

### **Made For iPods with dock connector:**

- iPod video
- iPod nano
- iPod photo
- iPod mini
- 4th Generation iPod with dock connector
- 3rd Generation iPod with dock connector \*

\*3rd Generation iPods are not capable of being charged by this product, but audio playback will function normally.

## How it Works

The A0312 wall dock pre-conditions the line level audio output from the iPod so that it can be delivered long distances over CAT5 cable to the A0312 output wall plate. The A0312 uses active drive circuitry which improves the noise immunity and helps maintain the signal quality to ensure the best possible listening experience.

The convenient slide-out cradle houses the iPod dock connect which allows signals from your iPod to be accessed without the use of messy adaptors or cables. In addition to audio output, the dock connector supplies signals to the S-video and composite video connectors on the back of the wall dock, enabling easy viewing of your iPod video on a local TV screen. See the Basic Application diagram for details.

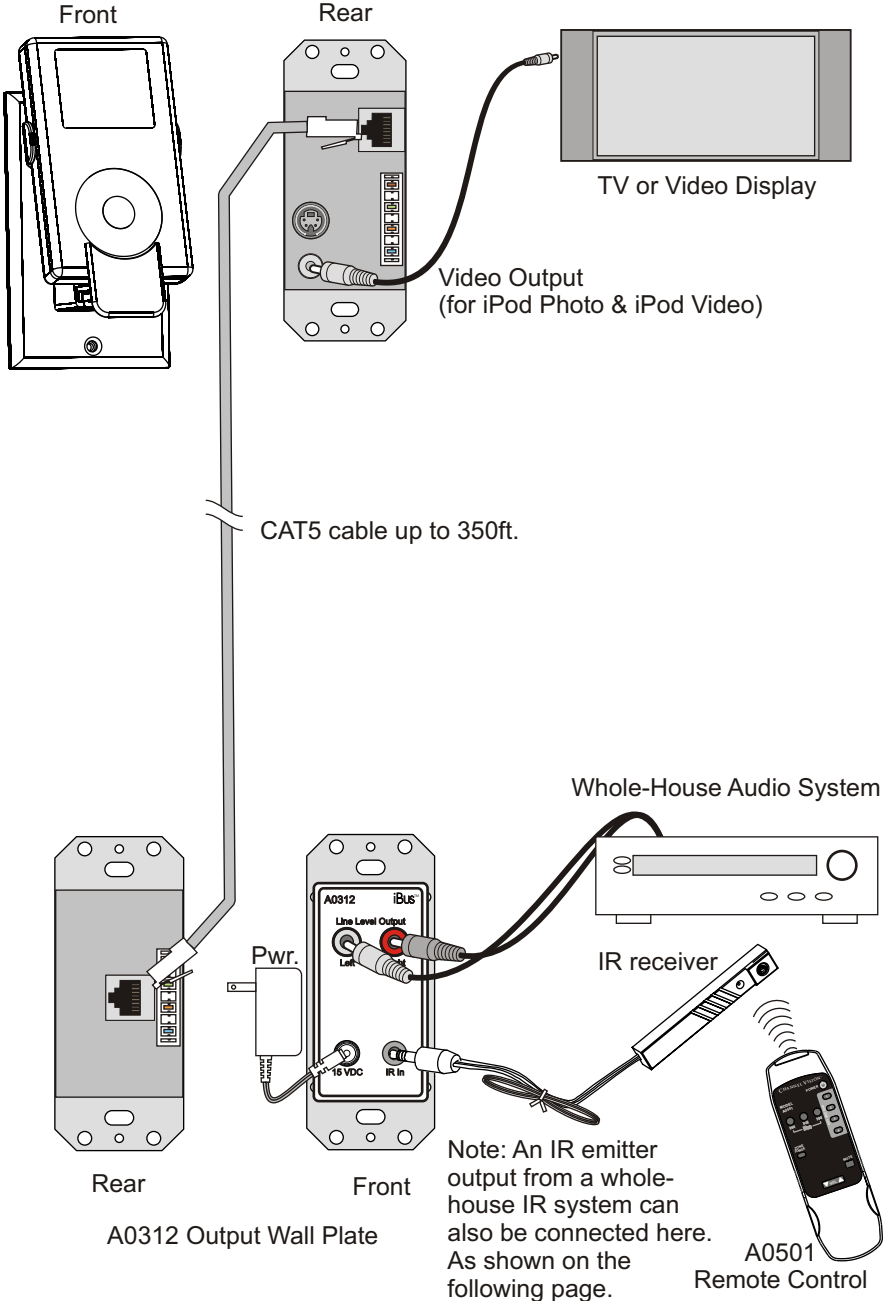
In whole-house applications, it may be desirable to control the iPod from different rooms of the house. This is easy with the use of the A0501 remote control which provides the same play and search functions that are available on the iPod.

## What is iBus?

The term iBus refers to a series of products made by Channel Vision Technology that facilitate the integration of the popular iPod music player into whole-house audio systems. We realize that the iPod is capable of serving as a whole-house media source and Channel Vision's iBus products help deliver the iPod's content to every room of the house.

# Basic Application

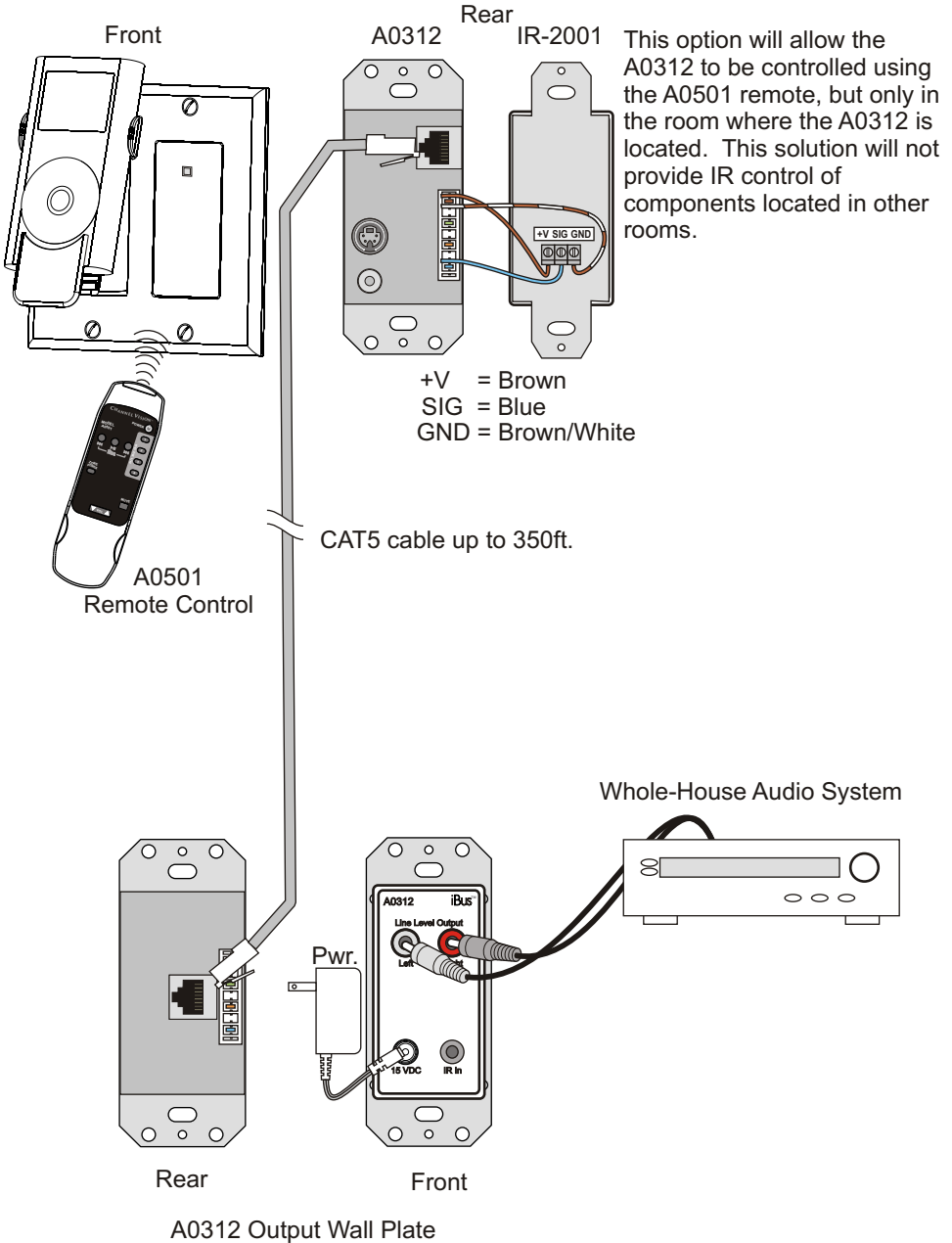
A0312 Wall Dock





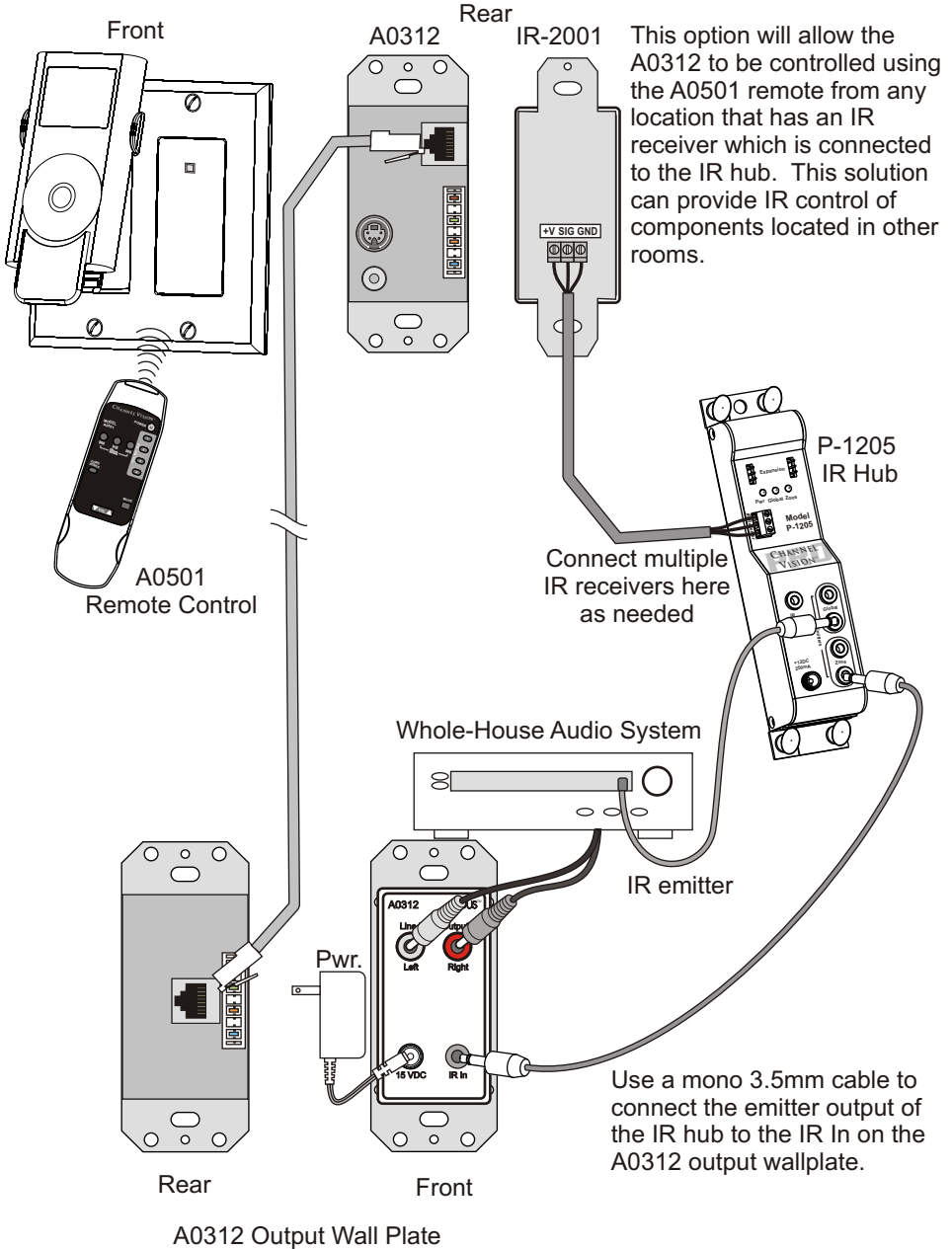
# IR Control Options

Integrating a single IR-receiver with the A0312 Wall Dock



# IR Control Options

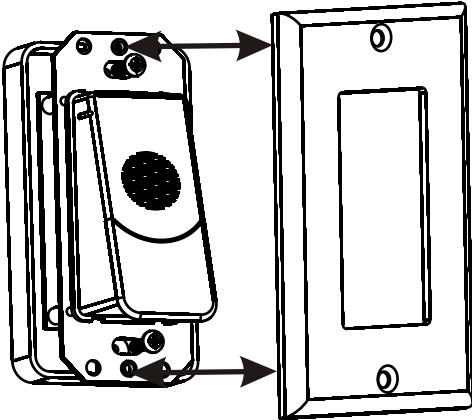
Integrating whole-house IR with the A0312 Wall Dock



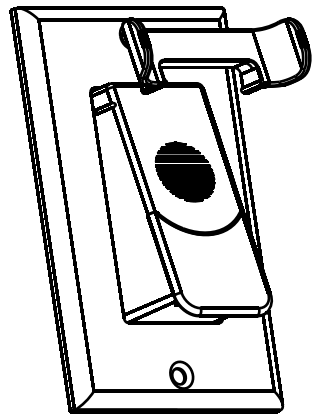


# Installation

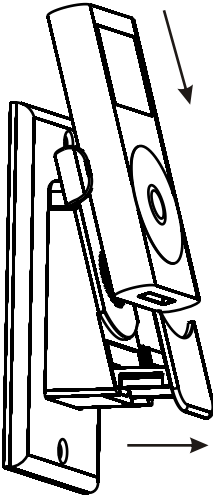
1. Mount the A0312 in a low voltage ring or junction box.



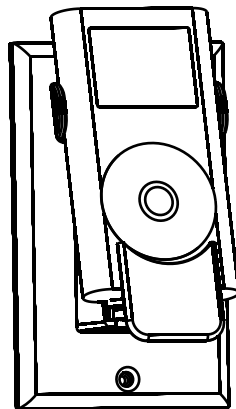
2. Install the trim ring.



4. Open the slide-out cradle and dock your iPod.



5. Enjoy your music!



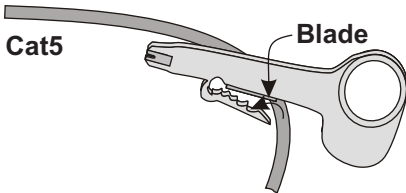
# Connection Tips and Troubleshooting

- 1) Be sure you have connected the CAT5 cable correctly. Follow the TIA-568A standard at both ends. Mis-wiring can cause distorted sound or prevent the system from working at all!
- 2) Be sure you have connected the speakers in phase. Follow the label on the product. Out of phase speakers can rob the system of its bass. Especially when driving dual-voice-coil speakers.
- 3) Trouble with IR control?
  - a. Make sure you are using the correct remote control. The A0312 will only respond to IR signals from the Apple Remote produced by Apple Computer or the A0501 produced by Channel Vision. Other 3rd party remote controls are not supported.
  - b. Double check the wiring used to connect your IR receiver and any associated IR components such as an IR hub. Review the diagrams in this manual for details.
  - c. Some IR receivers have a feedback LED that flashes whenever IR signals are received. If the IR receiver you are using has this feature, check to make sure the LED flashes whenever you press buttons on your remote control.
    - i. If you don't see the feedback LED, try replacing the batteries in your remote control.
- 4) The A0312 is designed to charge the iPod. When the iPod is not playing music, the screen should indicate that the iPod is being charged. If this does not occur, make sure the power supply is connected to the output wall plate of the A0312.
- 5) Observe wiring distance specifications. The maximum recommended wire length between the wall dock and output wall plate is 350 feet. Although the A0312 has been proven to work at distances of 500 feet, such extreme distances are not recommended because erratic performance may result due to the power loss caused by the CAT5 wire.
- 6) If you are experiencing problems with your iPod that occur even when it is not docked in the A0312, then please contact Apple customer service for support.
- 7) If you need additional help troubleshooting the A0312 please contact Channel Vision technical support or check our website for more details: [www.channelvision.com](http://www.channelvision.com).

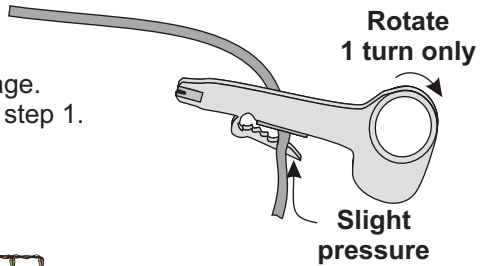
# Stripping and Connecting CAT-5 Wire

CAT-5 cable should be stripped with a proper stripping tool, such as Channel Vision's J-110 tool.

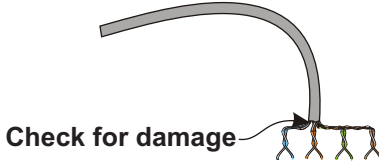
1. Place the CAT-5 between the blade and the first notch of the J-110 tool.



2. Rotate the tool only once. Multiple turns will cause you to cut into the inner wires.

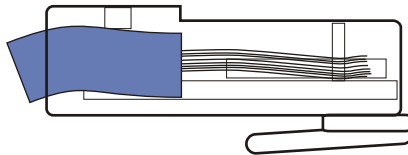


3. Inspect the inner wires for damage. If any wires are cut start over at step 1.

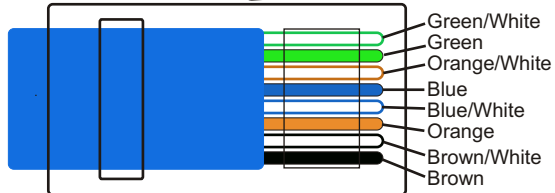


## TIA-568A RJ-45 Modular Plug

Side view:



Top view:



**Specifications:** (typical @25° C)

<b>Operating Voltage :</b>	15VDC
<b>Cable Requirements:</b>	CAT5 or better
<b>Recommended Max. Cable Length:</b>	350ft.
<b>Operating Temperature:</b>	-10°C to +50°C

Specifications subject to change without notice.

iPod is a trademark of Apple Computer, Inc., registered in the U.S. and other countries.



## **2 Year Limited Warranty**

Channel Vision Technology will repair or replace any defect in material or workmanship which occurs during normal use of this product with new or rebuilt parts, free of charge in the USA, for two years from the date of original purchase. This is a no hassle warranty with no mail in warranty card needed. This warranty does not cover damages in shipment, failures caused by other products not supplied by Channel Vision Technology, or failures due to accident, misuse, abuse, or alteration of the equipment. This warranty is extended only to the original purchaser, and a purchase receipt, invoice, or other proof of original purchase date will be required before warranty repairs are provided.

Mail in service can be obtained during the warranty period by calling (800) 840-0288 toll free. A Return Authorization number must be obtained in advance and can be marked on the outside of the shipping carton.

This warranty gives you specific legal rights and you may have other rights (which vary from state to state). If a problem with this product develops during or after the warranty period, please contact Channel Vision Technology, your dealer or any factory-authorized service center.

**FC** Tested To Comply  
With FCC Standards

Model: A0312 iPod Wall Dock for Distributed Audio  
FCC certificate number: 0602024

This device complies with part 15 of the FCC rules. Operation is subject to the following two conditions: (1) This device may not cause harmful interference, and (2) This device must accept any interference received, including interference that may cause undesired operation.



**www.channelvision.com**

234 Fischer Avenue, Costa Mesa, California 92626 USA

(714)424-6500 • (800)840-0288 • (714)424-6510 fax

email: [techsupport@channelvision.com](mailto:techsupport@channelvision.com)