

R SERIES

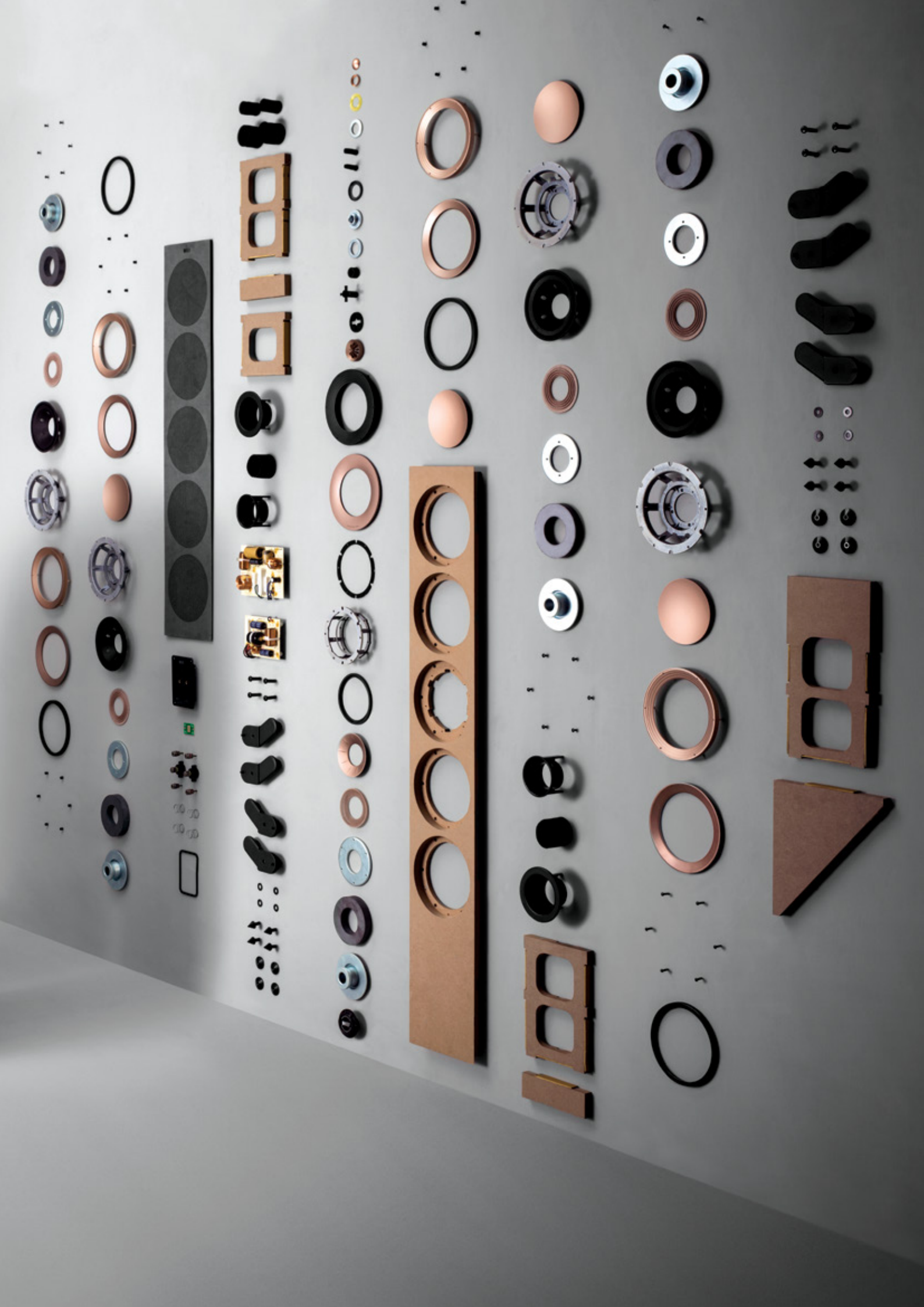


OBSESSED WITH HIGH RESOLUTION

THE ONLY THING TO REMAIN THE SAME IS THE NAME

The new KEF R Series has been completely re-engineered from the ground up. Decades of experience and our unbridled passion for music come together in the new R Series. It combines innovations drawn from the Reference Series with new bespoke technologies to ensure the new R Series delivers more detail, deeper insight and greater excitement. Every element of the new R Series has been precisely engineered to recreate the exhilaration of hearing music with all the emotional nuance of the original performance.





THE R SERIES

The R Series is conceived to enhance your listening pleasure. It is a range created to deliver a thrilling musical experience, again and again. R Series is designed to reveal the infinitesimal details that other speakers may miss; those small, barely discernible sounds that help bring a piece of recorded music to life, and keep you going back for more.

R Series offers a choice of three floorstanding speakers, a stand mount for more compact spaces and accompanying matching theatre models. Each one offers the finest sound KEF has ever delivered in its category whatever the dimensions of the room or system configuration.



R11

R7

R5

R3

R2c

R8a



KEF

Uni-Q Driver Array

R STARTS WITH REFERENCE

KEF's quest for music perfection demands constant innovation. This is as true now as it was when KEF was founded in 1961. KEF's portfolio of acoustic design patents and innovations is unequalled. It leads the way in the use of sophisticated computer modelling techniques, such as finite element analysis and computational fluid dynamics. This drive for perfection is the reason the new R Series features five major technological advances, many of which are derived from and inspired by the class-leading Reference Series.

The benchmark by which all KEF loudspeakers are judged, the Reference Series, is the home of cutting-edge acoustic innovation. Innovations that are the result of diligent, creative research and development by the very best engineers in the business. But innovation doesn't stop at Reference, and the new R Series is the beneficiary of many of the technologies, materials and developments made in the creation of the Reference Series.

These improvements cover the whole sound spectrum and the entire loudspeaker, with developments ranging from a new version of the legendary Uni-Q driver to improved cabinet construction and a radical new port technology. As colouration is removed, clarity improved, and accuracy delivered at new, higher levels, the performance of the R Series is raised to previously unheard levels and your passion for recorded music is re-born.



THE SCIENCE OF SOUND

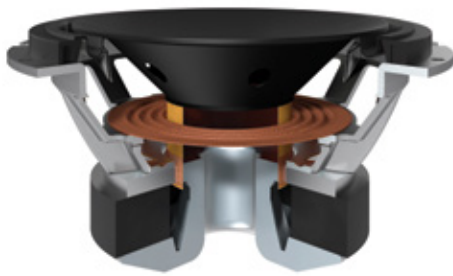
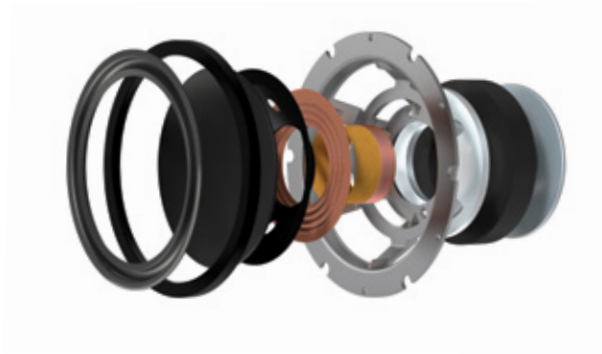


UNI-Q

Placing the tweeter in the acoustic centre of the midrange cone brings the acoustic ideal of a single point source closer to realisation. The new R Series benefits from a new 12th generation incarnation of Uni-Q which has been extensively designed using KEF's in-house simulation and analysis tools. KEF's engineers have been able to dramatically reduce colouration through reducing resonance in the minute gaps between Uni-Q's separate elements. The resulting sound is purer, more precise and makes stereo imaging far more believable.

Shadow flare

Derived directly from the Reference Series, the Shadow Flare is an innovative method of reducing harmful cabinet diffraction for delicate high-frequencies. Shadow Flare is a carefully profiled transition surface which extends the waveguide effect of Uni-Q. The tweeter no longer has line of sight of the cabinet edges, creating a 'shadow region' at the points where the potential for diffraction is highest. The result is vastly improved fine detail, particularly when it comes to the subtle nuances of plucked strings and other percussive sounds.



Low frequency driver

Bass is the very foundation of music; everything is built upon it and maximising bass performance is a vital building block towards pristine sound. R Series bass drivers are built using a two-part structure, where a shallow concave aluminium skin sits atop a paper cone. This great stiffness, combined with the cone's unique geometry, delivers pure piston like movement to deliver punch and speed. To accurately control this mighty driver, KEF has also completely redesigned its magnet system to create a more even magnetic field. The overall result is more impressive and impactful.



Cabinet bracing

A solid platform is imperative for great sound. The new R Series benefits from constrained layer damping. This system utilises internal braces joined by a 'lossy' interface and is highly effective at dissipating unwanted vibrations that would otherwise artificially change the sound and music.

Flexible port technology

When it comes to generating deep, articulate bass, port design is crucial. The ports in R Series feature innovative flexible walls. Using computational fluid dynamics, the flare and profile of each port is calculated to delay the onset of turbulence, while the flexible port walls prevent longitudinal resonances from colouring the midrange.



FEEL THE MUSIC



When you want to forget the world and simply lose yourself in sound, R Series will take you there. At KEF, the quest to develop perfect loudspeakers has lasted more than 50 years. Like you, we don't just want to hear music; we want to experience it, get inside it and feel part of it.

Each R Series model will reproduce music at a different scale for different room sizes. And each will allow you to discover depth and detail in your music you never knew existed – from the scrape of a plectrum on a guitar string to the sense of emotion and atmosphere in a live performance.

SOUND IS THE REAL STORY

In the movie world, the best sound engineers are capable of weaving ever more wonderful sonic webs and the new R Series is your ticket for getting the best out of movies, delivering the natural, consistent sound essential for a phenomenal surround sound experience.

The same sized Uni-Q array is shared by the R2c centre channel, the R3 stand mount and all three floorstanding models, ensuring that focus is entirely on the film and not the equipment around the room. Plus, the R Series includes the R8a, a closed box speaker designed to be either wall mounted for surround applications or used as a speaker-on-top Dolby Atmos module. And with the addition of any of KEF's class-leading subwoofers, the whole cinematic experience is felt, from the deepest impact to the softest whisper.





KEF makes a range of matching subwoofers to augment RSeries with powerful and controlled bass.



R8a on wall

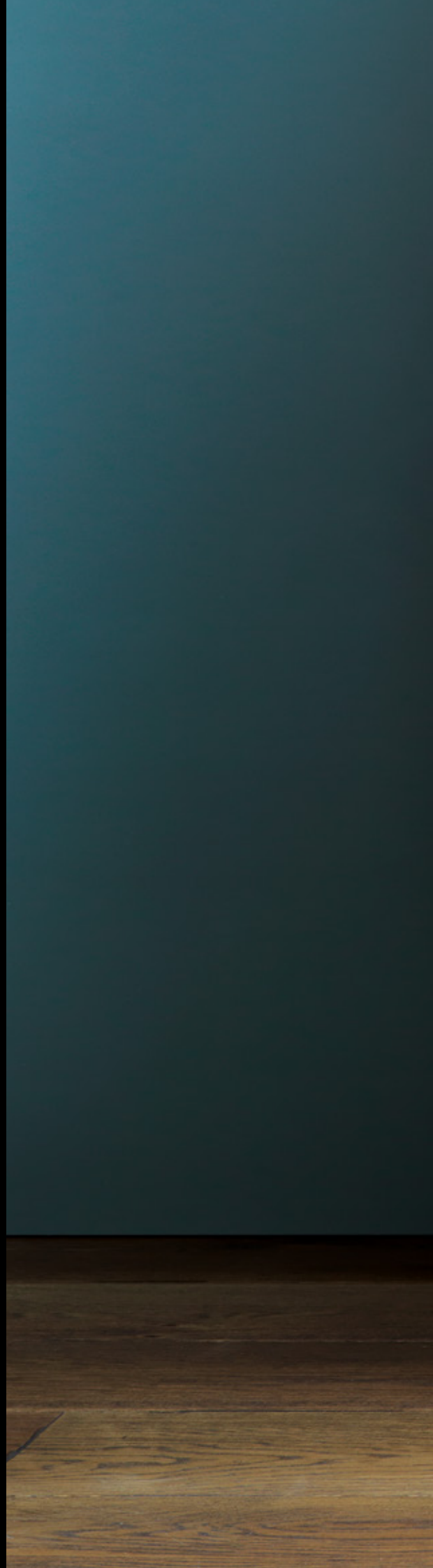


R8a on speaker top

BEAUTIFUL BY DESIGN

Great design is timeless. KEF's product designers seek to create deceptively simple, elegant loudspeakers. But form follows function. So whilst R Series is driven by acoustics, all visible engineering fixings have been artfully concealed so all the listener sees is a beautiful and simple exterior.

Designed to be at home in either traditional or modern interiors, the R Series comes in a choice of sleek white or black gloss finishes or a classic walnut wood veneer. KEF's tone-on-tone approach to design creates a focused colour palette to ensure R Series blends with interiors seamlessly.





KEF

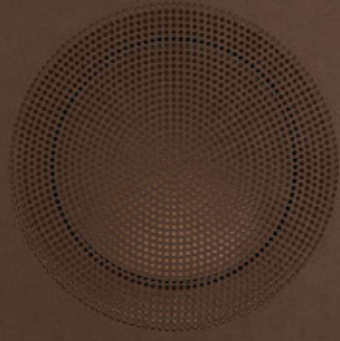
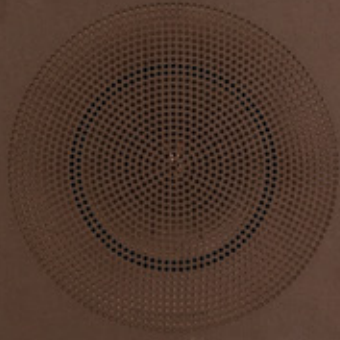
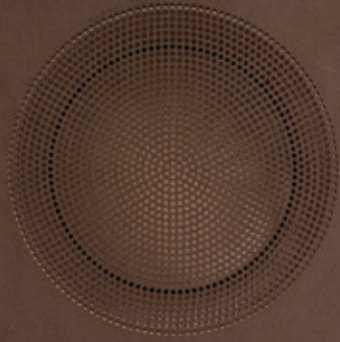
MICROFIBRE GRILLES

The R Series has been created to sound at its best with or without grilles. This microfibre design is a first for KEF and resulted in a design that not only looks beautiful but has negligible effect on sound performance.

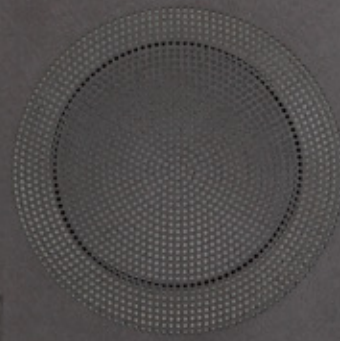
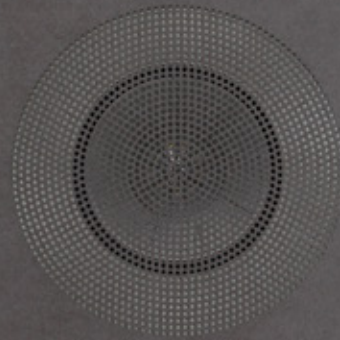
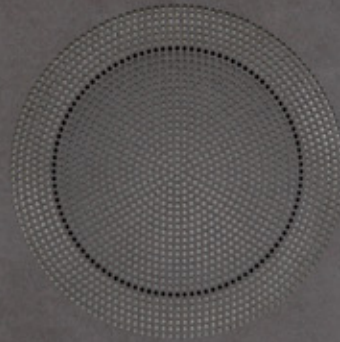
All of the grilles are hand crafted and compressed with heated pressure from thirteen layers of composite material. The grilles continue the tone-on-tone approach: grey for the white cabinet, brown for the walnut, and black for the black. The grilles edges are burnished in a similar way to fine leather goods and the overall effect is almost suede-like.



KEF



KEF





Of all art, music is the most indefinable and the most expressive, the most insubstantial and the most immediate, the most transitory and the most imperishable. Transformed to a dance of electrons along a wire, its ghost lives on. When KEF returns music to its rightful habitation, your ears and mind, they aim to do so in the most natural way they can... without drama, without exaggeration, without artifice.

Raymond Cooke, KEF

Specifications



Model	R11	R7	R5
Design	Three-way bass reflex	Three-way bass reflex	Three-way bass reflex
Drive units	Uni-Q Driver Array: HF: 25mm (1in.) vented aluminium dome MF: 125mm (5in.) aluminium cone Bass Driver: LF: 4 x 165mm (6.5in.) hybrid aluminium	Uni-Q Driver Array: HF: 25mm (1in.) vented aluminium dome MF: 125mm (5in.) aluminium cone Bass Driver: LF: 2 x 165mm (6.5in.) hybrid aluminium	Uni-Q Driver Array: HF: 25mm (1in.) vented aluminium dome MF: 125mm (5in.) aluminium cone Bass Driver: LF: 2 x 130mm (5.25in.) hybrid aluminium
Crossover frequency	400Hz, 2.9kHz	400Hz, 2.9kHz	400Hz, 2.9kHz
Frequency range (-6dB)	30Hz - 50kHz	33Hz - 50kHz	30Hz - 50kHz
Typical in-room bass response (-6dB)	26Hz	27Hz	29Hz
Frequency response (±3dB)	46Hz - 20kHz	40Hz - 20kHz	50Hz - 20kHz
Harmonic distortion (90dB, 1m)	≤0.3% 120Hz - 20kHz	≤0.3% 100Hz - 20kHz	≤0.3% 120Hz - 20kHz
Maximum output	113dB	111dB	110dB
Amplifier power (recommended)	15 - 300W	15 - 250W	15 - 200W
Nominal impedance	8Ω (min.3.2Ω)	8Ω (min.3.2Ω)	8Ω (min.3.2Ω)
Sensitivity (2.83V/1m)	90dB	88dB	87dB
Weight *	37.7 kg (83.1 lbs.)	31.4 kg (69.2 lbs.)	27.3 kg (60.2 lbs.)
Dimension (H x W x D) with terminal *	1249 x 200 x 383.5 mm (49.2 x 7.9 x 15.1 in.)	1062 x 200 x 383.5 mm (41.8 x 7.9 x 15.1 in.)	1025 x 175 x 343.5 mm (40.4 x 6.9 x 13.5 in.)
Dimension (H x W x D) with terminal with Plinth *	1295.5 x 310.6 x 383.5 mm (51 x 12.2 x 15.1 in.)	1108.9 x 310.6 x 383.5 mm (43.7 x 12.2 x 15.1 in.)	1071.4 x 271.6 x 343.5 mm (42.2 x 10.7 x 13.5 in.)
Finishes	Black Gloss / White Gloss / Walnut	Black Gloss / White Gloss / Walnut	Black Gloss / White Gloss / Walnut

* Measurement per unit



Model	R3	R2c	R8a
Design	Three-way bass reflex	Three-way closed box	Two-way closed box
Drive units	Uni-Q Driver Array: HF: 25mm (1in.) vented aluminium dome MF: 125mm (5in.) aluminium cone Bass Driver: LF: 165mm (6.5in.) hybrid aluminium	Uni-Q Driver Array: HF: 25mm (1in.) vented aluminium dome MF: 125mm (5in.) aluminium cone Bass Driver: LF: 2 x 130mm (5.25in.) hybrid aluminium	Uni-Q Driver Array: HF: 25mm (1in.) vented aluminium dome MF/ LF: 130mm (5.25in.) aluminium cone
Crossover frequency	400Hz, 2.9kHz	400Hz, 2.9kHz	2kHz
Frequency range (-6dB)	30Hz - 50kHz	64Hz - 50kHz	96Hz - 19.5kHz
Typical in-room bass response (-6dB)	30Hz	49Hz	=
Frequency response (±3dB)	52Hz - 20kHz	74Hz - 20kHz	105Hz - 18.5kHz
Harmonic distortion (90dB, 1m)	≤0.3% 130Hz - 20kHz	≤0.3% 120Hz - 20 kHz	≤0.3% 200Hz - 20kHz
Maximum output	110dB	110dB	106dB
Amplifier power (recommended)	15 - 180W	15 - 200W	25 - 150W
Nominal impedance	8Ω (min.3.2Ω)	8Ω (min.3.2Ω)	8Ω (min.4.2Ω)
Sensitivity (2.83V/1m)	87dB	87dB	86dB
Weight *	13.5 kg (29.8 lbs.)	16.9 kg (37.3 lbs.)	4.45 kg (9.8 lbs.)
Dimension (H x W x D) with terminal *	422.2 x 199.6 x 335.5 mm (16.6 x 7.9 x 13.2 in.)	175 x 550 x 308.5 mm (6.9 x 21.7 x 12.1 in.)	173.8 x 174.6 x 259 mm (6.8 x 6.9 x 10.2 in.)
Finishes	Black Gloss / White Gloss / Walnut	Black Gloss / White Gloss / Walnut	Black Gloss / White Gloss

* Measurement per unit