

SAVE TIME • SOLVE PROBLEMS • LOOKS GREAT



INNOVATIVE PRODUCTS FOR

Low Voltage • Audio • Video  
Security • Datacom Systems  
Installations

2017-2018



# PRODUCTS FOR THE PROS

## Contents

Mounting Brackets.....	2
Box Extenders.....	7
Heavy-duty Exterior Boxes.....	8
Keypad Enclosures.....	9
Red 4x4 boxes for Fire Alarm installs.....	9
Mounting Kits for security cameras, detectors....	10
The Scoop™ cable entry devices.....	17
Plastic TV Boxes.....	18
IN BOX™ Recessed Electrical Boxes.....	22
Covers for TV boxes.....	22
TV Bridge™ Kits.....	25
Steel TV Boxes.....	30
Countertop Box Kits.....	34
Floor Box Kits.....	36
Specialties for Suspended Ceilings	
Wire Grabber™ Hanging Support.....	39
Fan/Fixture Box Kits.....	40
Wire Management	
Cable Hangers, Bushings, Rings,	
Cable Standoffs.....	42



**Arlington**



# Mounting Brackets for Class 2 Low Voltage Wiring

## Fast, Easy Installation in Existing Walls!

**Installs in 3 minutes**

### Wing Design

Centered mounting wing screws hold bracket secure, flush to wall

### Recessed Screw Hole and Thin Front Lip

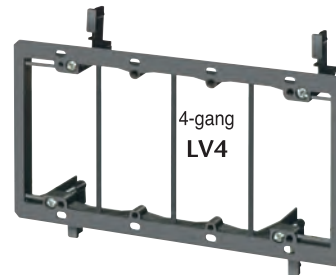
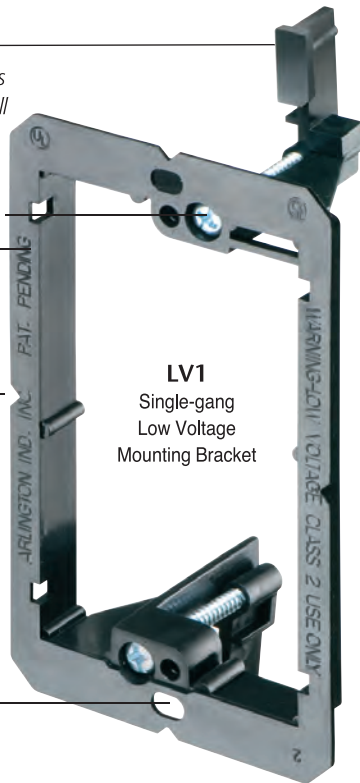
(and mounting wings) seat wall plate flush

### Notches

level, center bracket

### Oval Hole

Allows leveling of device



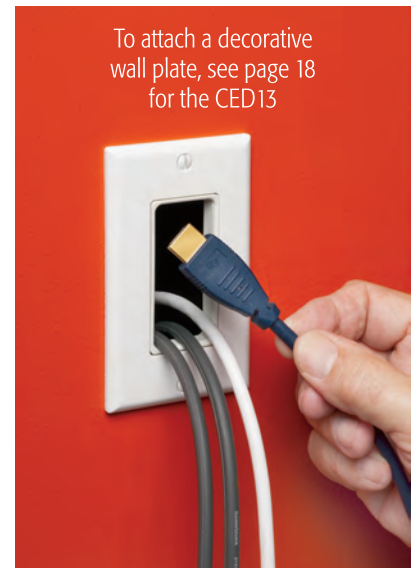
Arlington's non-metallic, Low Voltage Mounting Brackets are the time- and money-saving solution for faster and easier mounting of Class 2 communications, computer and cable TV wiring.

*The bracket is its own template.*

Level the bracket on the wall, then use the bracket as a guide for the cutout by tracing a line around the inside of the bracket.

Designed to mount wall plates flush, our mounting brackets offer features – specially designed screw holes and more – that deliver a better-looking, easy-to-install job.

- LV1 through LV4 adjusts to fit 1/4" to 1" wall thicknesses.
- UL/CSA Listed



### SPECIAL USE

Mounting Brackets for:

- Cast concrete or block
- New Construction

See following page for details.



CATALOG NUMBER	UPC/DCI/NAED MFG. #018997	DESCRIPTION for Existing Construction	UNIT PKG	STD PKG
LV1	58175	Single-gang	10	100
LV2	10952	2-gang	5	50
LV3	09600	3-gang	5	50
LV4	09601	4-gang	5	50

Patented. Other Patents Pending.



# SPECIAL USE Mounting Brackets for Class 2 Low Voltage Wiring

Our **single-gang, low profile** mounting brackets make quick work of installations using 1/2" or 5/8" drywall installed on furring strips that are attached to concrete walls.

For existing construction, our low-profile, low-voltage non-metallic mounting brackets...

- Adjust to fit 1/4" to 1" drywall, wallboard or paneling
- Install faster – cost less than metal
- Single and two-gang styles
- UL/CSA Listed



## Low profile mounting brackets for installations on cast concrete or concrete block walls



### Wing Design

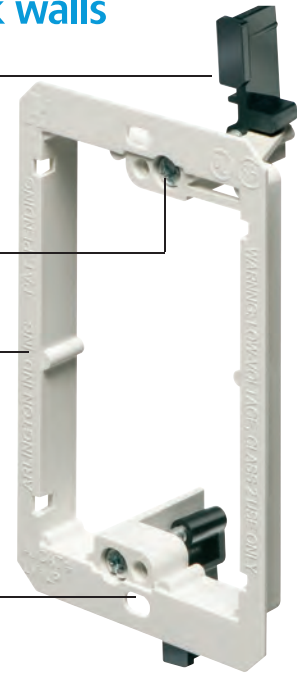
Centered mounting wing screws hold bracket secure, flush to wall

### Recessed Screw Hole and Thin Front Lip

(and mounting wings seat wall plate flush)

### Oval Hole

Allows leveling of device

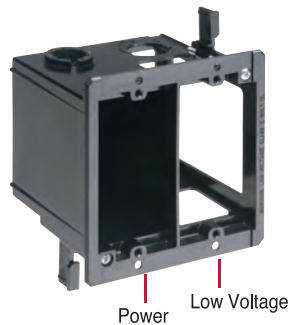


CATALOG NUMBER	UPC/DCI/NAED MFG. #018997	DESCRIPTION FOR EXISTING CONSTRUCTION	UNIT PKG	STD PKG
LV1LP	58177	Single-gang/Low Profile	10	100
LV2LP	23102	2-gang/Low Profile	5	50

These non-metallic, combination power and low voltage boxes are designed to accommodate power and low voltage installations like phone/cable and fiber optic installations in the same box.

They offer the best way to neatly install power and phone/cable outlets together, in one location, saving time and money.

- Two hour fire rating
- UL listed

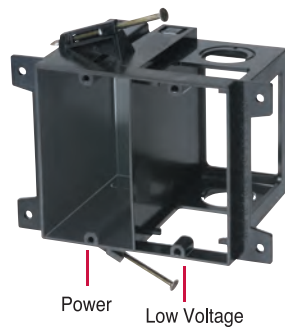


### LVDR2 For Retrofit

- Fast and easy installation
- Adjusts to fit 1/4" to 1-1/2" thick wallboard, paneling or drywall
- For raceway, the low voltage side provides a combo 1/2" and 3/4" KO
- Protects cable from damage
- Mounting wing screws hold box securely in place
- Includes installed NM connector on power side



SCREW onto Metal Stud



### LVD2 For New Work

- For wood stud installation, LVD2 features parked-in-place nails ready for use
- For metal stud installation, LVD2 features screw holes on either side of the front flange (screws not included)
- For raceway, the low voltage side provides a combo 1/2" and 3/4" KO
- Includes installed NM connector on power side



Simple, NAIL on Installation



Arlington



# Mounting Brackets for Class 2 Low Voltage Wiring

## Nail or Screw on to wood or metal studs in new construction

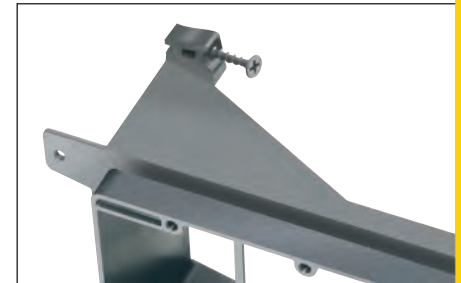
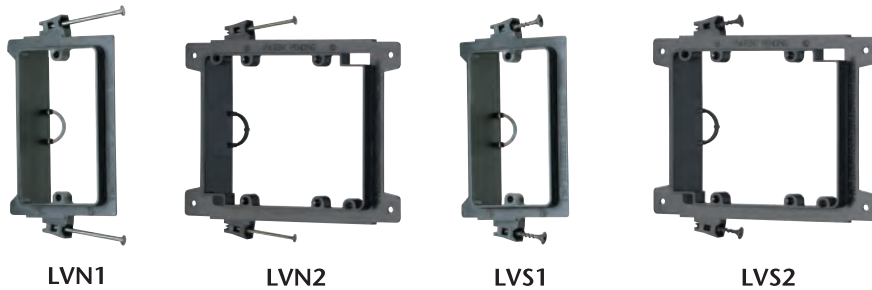


Just nail or screw these non-metallic brackets to a wood or steel stud – and you're ready to install low voltage Class 2 wiring!

- Lower cost than extension rings or mud rings
- Ready to install - nails or screws come parked-in-place
- Built-in loop for tying off cable
- Easy, secure mounting of bracket to studs with nails or screws
- Allows wall plate to mount flush with wall surface
- UL/CSA Listed

*25% faster installation over steel or plastic mud rings!*

**Corners on the 3- and 4-gang styles are reinforced for added support against the stud.**



### NAIL on low voltage mounting brackets:

CATALOG NUMBER	UPC/DCI/NAED MFG #01 8997	DESCRIPTION FOR NEW CONSTRUCTION	UNIT PKG	STD PKG	HEIGHT	WIDTH	DEPTH
LVN1	00261	Single-gang	50	50	4.170	2.810	1.500
LVN2	00275	2-gang	25	25	4.170	5.492	1.500
LVN3	00277	3-gang	10	10	4.170	7.804	2.624
LVN4	00278	4-gang	10	10	4.170	9.617	2.624



### SCREW on low voltage mounting brackets:

CATALOG NUMBER	UPC/DCI/NAED MFG #01 8997	DESCRIPTION FOR NEW CONSTRUCTION	UNIT PKG	STD PKG	HEIGHT	WIDTH	DEPTH
LVS1	00262	Single-gang	50	50	4.170	2.810	1.500
LVS2	00280	2-gang	25	25	4.170	5.492	1.500
LVS3	00282	3-gang	10	10	4.170	7.804	2.624
LVS4	00283	4-gang	10	10	4.170	9.617	2.624

Patented. Additional Patents Pending.



# Low Voltage Mounting Brackets for NEW CONSTRUCTION

- Non-metallic
- Sturdy tabs provide extra-secure mounting of class 2, low voltage wiring.
- Convenient wire tie-off through slot at top
- Costs 20% less than metal extension rings!
- UL/CSA Listed

## Mounts Vertical or Horizontal on wood or metal studs

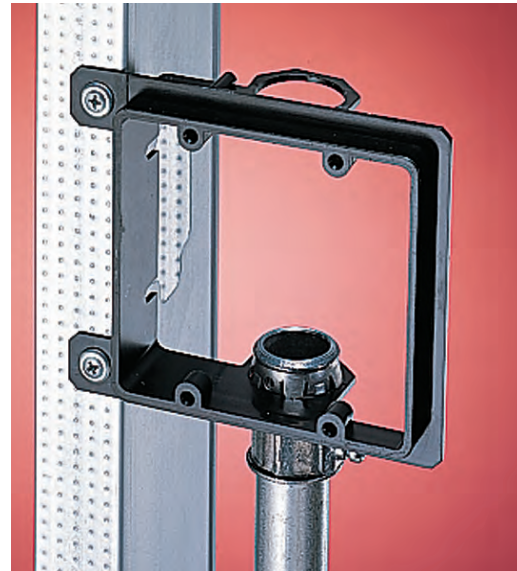
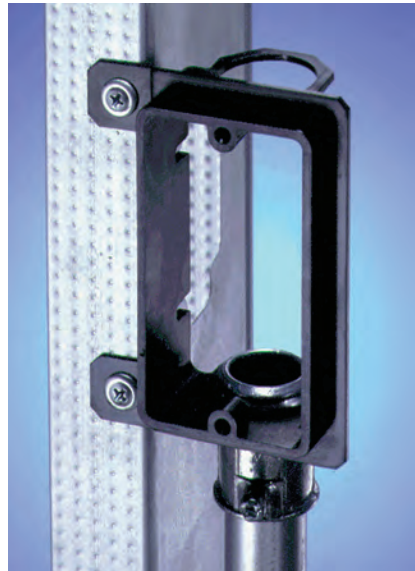
LVH1



CATALOG NUMBER	UPC/DCI/NAED MFG. #018997	DESCRIPTION FOR NEW CONSTRUCTION	UNIT PKG	STD PKG
LVH1	10979	Single-gang	50	50

Patented.

- Non-metallic
- For communications, cable TV, and computer wiring
- Permits the use of 3/4" raceway
- Works with 1/2" or 5/8" drywall
- Available in single or 2-gang models
- UL/CSA Listed



CATALOG NUMBER	UPC/DCI/NAED MFG. #018997	DESCRIPTION FOR NEW CONSTRUCTION	UNIT PKG	STD PKG
LVMB1	14364	Single-gang	10	100
LVMB2	14365	2-gang	5	50

Patented.



LVMB1



LVMB2



Arlington



# UL/CSA Listed Box Extenders

## THE Answer for Set Back Electrical Boxes



Arlington's non-conductive box extenders extend set back metal or non-metallic electrical boxes up to 1-1/2", the easy way!

They work with any single gang device and most steel and non-metallic outlet boxes, providing a level, fully supported wiring device that's flush with the wall surface. In steel boxes they prevent arcing and shorting by creating a barrier between the box and device screws.

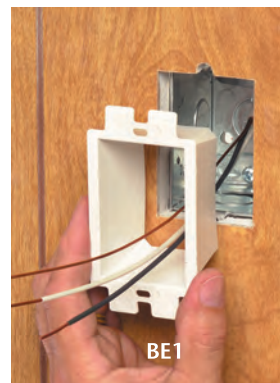
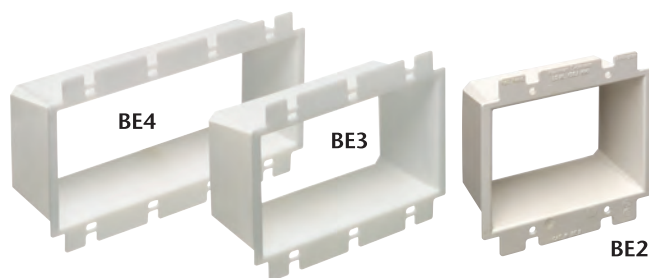
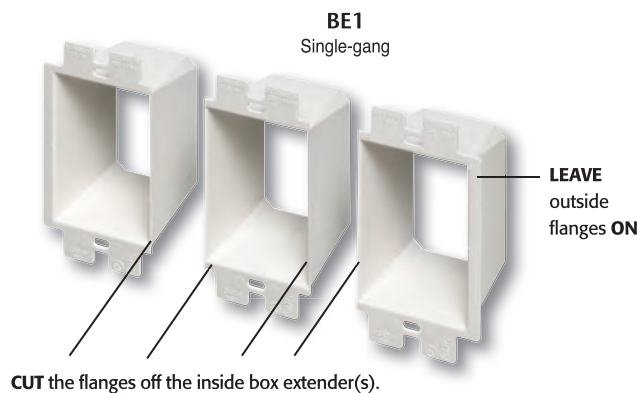
Our newest box extenders, the single gang **BE1X** and two-gang **BE2X** have a slightly larger flange than our BE series that provides extra device support when the wall opening is miscut or oversized. Both accommodate midi or max cover plates. Both are trimmable for use with standard plates. If you normally use a midi plate these are the box extenders for you!

- Complies with NEC 2014, article 314.20 for set back boxes

- 2-hour fire rating



**BE1X, BE2X**  
Trimmable to fit standard wall plates



CATALOG NUMBER	UPC/DEI/NAED MFG. #018997	DESCRIPTION BOX EXTENDERS	STD PKG
<b>BE1</b>	40160	Single-gang	25
<b>BE2</b>	48960	Two-gang	25
<b>BE3</b>	48967	Three-gang	10
<b>BE4</b>	48968	Four-gang	10
<b>BE1R</b>	40160	Fits 3-1/2" and 4" round or octagonal ceiling boxes. Trimmable for shallow boxes or obstructions	25
<b>BE1X</b>	40171	Single-gang with larger flange	25
<b>BE2X</b>	48973	Two-gang with larger flange	25

# Indoor/Outdoor Heavy-Duty Box

## Black and Gray, Non-Metallic • Protects Devices, Backups

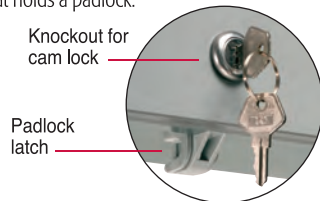
Arlington's non-metallic enclosure boxes MEET NEMA 3R requirements for outdoor use. They're the perfect solution to protecting and securing power backups, security devices and other valuable equipment outdoors or inside.

Made of heavy-duty, UV rated non-metallic material, and available in three sizes - our boxes are NEMA 3R rated for outdoor use when mounted with the hinge on top.

- 7" x 8" x 3.5"
- 11" x 11" x 3.5"
- 12" x 12" x 4" with or without a back plate

The back plate allows an installer to mount components to the plate even after the enclosure box is mounted. Changing batteries or doing maintenance is easy just by removing the plate.

Arlington's enclosure boxes are 'lockable' via a knockout on the front of the box for a cam lock - or a latch that holds a padlock.

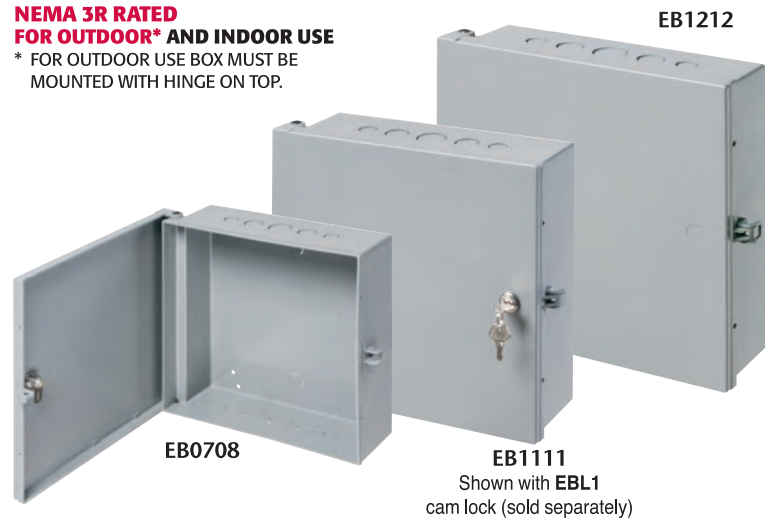


- Meets NEMA Type 3R Requirements
- Available in gray and black
- Optional cam lock sold separately
- Convenient 1/2" and 3/4" knockouts

CATALOG NUMBER	UPC/DCI/NAED MFG. #018997	DESCRIPTION ENCLOSURE BOX	UNIT PKG	STD PKG
EB0708	12672	7" x 8" x 3.5"	1	4
EB1111	12670	11" x 11" x 3.5"	1	5
EB1212	12671	12" x 12" x 4"	1	5
EB1212BP	23155	12" x 12" x 4" with Back Plate	1	5
EBL1	11400	Cam Lock	1	10



**NEMA 3R RATED FOR OUTDOOR\* AND INDOOR USE**  
\* FOR OUTDOOR USE BOX MUST BE MOUNTED WITH HINGE ON TOP.



**NEW!**

### BLACK enclosure boxes:

CATALOG NUMBER	UPC/DCI/NAED MFG #01 8997	DESCRIPTION BLACK NON-METALLIC	UNIT PKG	STD PKG
EB0708BL	23160	7" x 8" x 3.5"	1	4
EB1111BL	23162	11" x 11" x 3.5"	1	5
EB1212BL	23164	12" x 12" x 4"	1	5
EB1212BPBL	23166	12" x 12" x 4" with Back Plate	1	5



Arlington



# Weatherproof, Non-metallic Keypad Enclosures

## SURFACE MOUNT ENCLOSURE



DBK88C  
Patented

Locking  
feature

Arlington's non-metallic keypad covers protect an exterior system keypad against bugs, moisture and weather, turning a keypad that's not weatherproof into a weatherproof enclosure – fast! They are suitable for interior systems too.

Our surface mount keypad covers accommodate single, two-gang or 4x4 boxes, and most keypad styles. That's important when local codes require a box or enclosure for power and low voltage applications. They have a universal mounting pattern, so they mount horizontally or vertically. And, you can mount them without a box on flat surfaces for low voltage keypads.

CATALOG NUMBER	UPC/DCI/NAED MFG. #018997	DESCRIPTION WEATHERPROOF KEYPAD ENCLOSURE	COVER COLOR	STD PKG
DBK88C	77662	7-1/2" X 7-3/4" X 1-1/2" (INSIDE DIMENSIONS)	CLEAR	5
DBK88W	77663		WHITE	5
DBK55C	77664	5" X 5" X 1-1/2" (INSIDE DIMENSIONS)	CLEAR	10
DBK55W	77665		WHITE	10



DBK55W  
white paintable cover

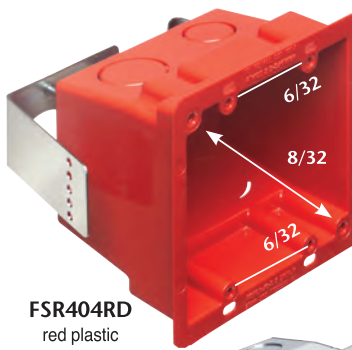
DBK88C  
clear cover

DBK88W  
white paintable cover

## Versatile 4x4 Box

For Power or Low Voltage in Retrofit Projects

CATALOG NUMBER	UPC/DCI/NAED MFG. #018997	DESCRIPTION 4X4 BOX	UNIT PKG	STD PKG
FSR404BL	00596	Plastic 4x4 Box, Black	25	25
FSR404RD	00598	Plastic 4x4 Box, Red	25	25
FSR404S	00597	Steel 4x4 Box, Plated	25	25
FSR404SRD	00599	Steel 4x4 Box, Red	25	25
FSR404SD	00600	Steel 4x4 Box Divider	25	25



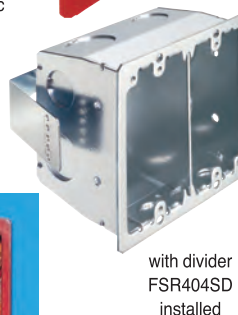
FSR404RD  
red plastic

Arlington's FSR404 non-metallic or plated steel boxes are ready to install!

These boxes have 1/2 and 3/4 inch knockouts. And two hole-pattern configurations in the same 4x4 box – 6/32 for a two-gang device, and 8/32 for a 4 inch square. Use the plastic or steel red box for installations of fire alarms or signaling device where required by local code.

Patented

FSR404S  
plated steel



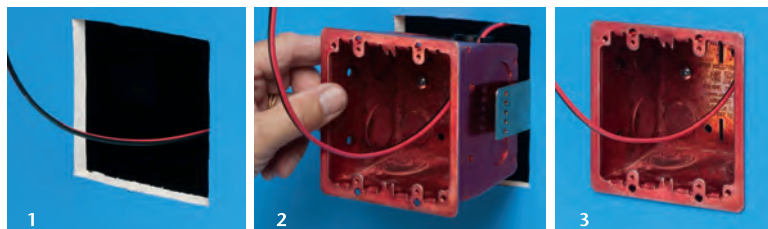
with divider  
FSR404SD  
installed

A spring steel clip secures the box in the wall. It's



set for 1/2 or 5/8 inch drywall, but for thicker walls the bracket can be modified by bending, and breaking it along the perforations.

Installing a fire alarm in our 4x4 box... Easy as 1-2-3!



### CAM-BOX™ KIT

#### Sturdy Security Camera Installation on a Suspended Ceiling



Use Arlington's CAM-BOX™ KIT to install any security camera (with base diameter up to 7") on a suspended or drywall ceiling panel. For power or low voltage, it installs FAST with a 4" hole saw, saving time and money.

It's a tested assembly that holds up to 50 lbs on a suspended or drywall ceiling. It fits any security camera hole pattern because you drill the holes in the mounting plate. Larger cameras (base diameter from 4.5" to 7") mount directly to the paintable white plastic box flange.

Unlike most multi-piece assemblies, CAM-BOX™ KIT is rated for:

- Up to 50 lbs on a suspended ceiling (or drywall ceiling) in combination with drop wire for support
- Up to 10 lbs on a drywall ceiling without drop wire (not rated for fixtures)
- Up to 7 lbs on walls

CAM-BOX™ KIT includes a drop wire for overhead support; mounting wings for attachment of the 27.0 cu. in. box to the ceiling; 1/2" and 3/4" knockouts in the box, two NM94 non-metallic cable connectors – and a mounting bracket and plate for the camera.

- Rotates in either direction for proper positioning of camera

**FLC430**  
CAM-BOX™ KIT  
Plastic



Includes box, drop wire, (2) NM94 cable connectors (plastic box only) and mounting bracket and plate for camera



**1** Cut hole in the ceiling with 4" hole saw.



**2** Align box as necessary. Tighten mounting wing screws.



**3** Wrap drop wire twice through loop on top of box and around a framing member above ceiling. Wrap wire around itself six times minimum in both instances.



**4** Install supplied NM94 cable connector (1/2" or 3/4").



**5** Install mounting bracket to inside of box

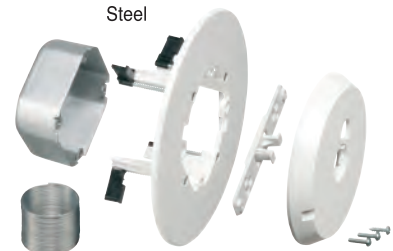
Note: Cameras with a base diameter from 4.5" to 7" mount directly to the box flange (do not require the mounting plate).



**6** Mount camera to mounting plate. Place assembly on bracket. Turn clockwise to lock. Install set screw.

Done! Secure camera installation, and no sagging ceiling.

**FLC430S**  
CAM-BOX™ KIT  
Steel



Includes steel box, drop wire, mounting bracket and plate for camera

CATALOG NUMBER	UPC/DCI/NAED MFG. #018997	DESCRIPTION CAM-BOX™ KIT	MATERIAL	CU IN	UNIT PKG	STD PKG
FLC430	09742	Security Camera Mounting Kit	Plastic	27.0	1	10
FLC430S	09743	Security Camera Mounting Kit	Steel box w/ plastic flange	17.0	1	10

Add suffix "GC" to catalog number when ordering plastic box with ground clip for use in Canada (i.e. FLC430GC)



**Arlington**

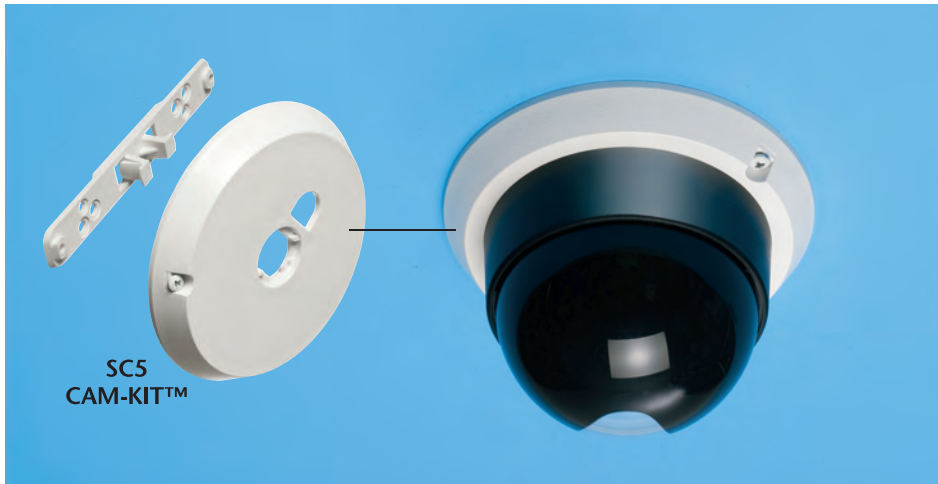


# Security Camera Mounting Kit • Smoke Detector Installation

CAM-KIT™

Installs in 2 minutes!

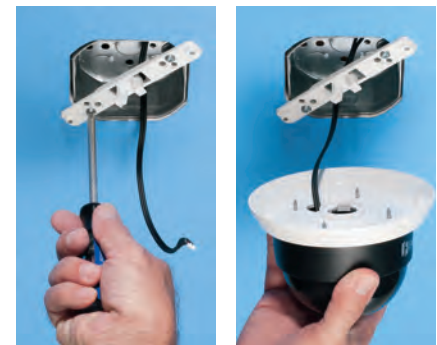
Secure, Universal Mounting to 3.5" and 4" Boxes



Arlington's new CAM-KIT™ security camera mounting kit offers the easy, secure way to install a security camera on a ceiling or wall.

- Includes a universal bracket, 5" mounting plate and mounting screws
- Fits ANY camera hole pattern because you drill the holes in the mounting plate
- Works with 3-1/2" and 4" fixture boxes and single-gang device boxes (also Arlington's FL430 fixture box)
- Secure attachment of low voltage or power security cameras to ceiling or wall-mounted boxes

CATALOG NUMBER	UPC/DCI/NAED MFG. #018997	DESCRIPTION	MATERIAL	UNIT PKG	STD PKG
SC5	18058	Security camera mounting kit	Plastic	1	20



1 Attach SC5 bracket to box.

2 Place assembly on bracket. Turn clockwise to lock. Install set screw.

## Round Low Voltage Mounting Bracket

Mounting bracket for low voltage smoke detector installations

Arlington's round low voltage mounting bracket is perfect for low voltage smoke detector installations.

- For smoke detectors, carbon monoxide detectors, cameras and more – or any low voltage products that mount to a standard 4" fixture box
- Mounting wing screws hold bracket secure
- Adjustable depth – fits 1/4" to 1-1/2" wall or ceiling thickness
- Fast, easy solution to mounting



1 Bracket is template for opening



2 Pull cable and tighten mounting wing screws to hold bracket secure



LVR1



3 Install mounting plate per manufacturer's instructions



4 Done! Fast, easy installation

CATALOG NUMBER	UPC/DCI/NAED MFG. #018997	DESCRIPTION FOR EXISTING CONSTRUCTION	STD PKG
LVR1	58185	4" Round	25



# 8161 Boxes...

## The Easy Way to Mount Security Cameras, and more on Walls or Ceilings

Arlington's **8161 series boxes** offer flexible solutions to mounting security cameras, detectors and other items outdoors! You can install a power or low voltage security camera – with mounting holes spaced wider than 4.5" apart – right on the box and mount it to a wall or ceiling.

These non-metallic boxes support security cameras, electrical accessories and fixtures up to 50 lbs on ceilings – 10 lbs on a wall. They have positionable threaded openings so you can install the camera where you need it now; then install additional cameras, etc. later.

- Use indoors or outdoors for dry, damp or wet locations
- UV rated for long outdoor life
- For cameras with base diameter smaller than 4.5" use our SC5 camera mounting kit (not included – see page 11)

**The box with flexible installation options!**



CATALOG NUMBER	UPC/DCI/NAED MFG. #018997	DESCRIPTION	WEIGHT RATING /MOUNTING	UNIT PKG	STD PKG
<b>8161TR</b>	00878	Camera mount for flat wall/ceiling	10 lb/wall	1	10
<b>8161BR</b>	08881	Camera mount for offset on wall	50 lb	1	10
<b>8161BP</b>	08880	Camera mount for Pendant/ Down rod based	50 lb/on down rod	1	10
<b>8161BPBL</b>	12785	Black Camera mount for Pendant/Down rod based	50 lb/on down rod	1	10
<b>8161CB</b>	01530	Camera mount for corner-mounting	50 lb/corner	1	10
<b>8161PM</b>	09020	Camera mount for Pole-mounting	50 lb/pole	1	10

Add suffix "GC" to catalog number when ordering with ground clip for use in Canada (i.e. 8161TRGC)



**Arlington**



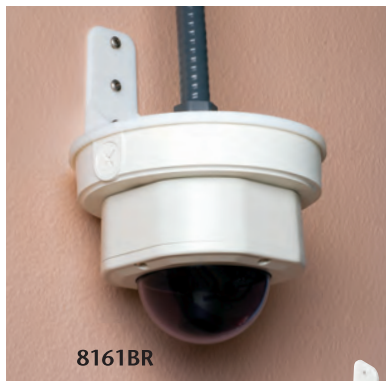
Patents pending.



The Easy Way to Mount Security Cameras, and more on Walls or Ceilings



8161TR installation photos shown with SC5 CAM-KIT™ installed



**Wall mounts up to 50 lbs, face down**  
8161BR includes sturdy, built-in wall-mount bracket, mounting screws and 3/4" to 1/2" reducing bushing.



**Mounts up to 50 lbs, on a down rod**  
Includes installed threaded base plate and 3/4" to 1/2" reducing bushing for use with 1/2" or 3/4" NPT down rods.  
(Support pipe not included)



**Corner mounts equipment up to 50 lbs**  
8161CB includes integral corner mount bracket.

Security camera not included

# Non-Metallic Multi Purpose Box

## Eliminates Time-consuming Field Modifications

Arlington's non-metallic **MULTI PURPOSE BOX** is the labor-saving solution to installing a security camera that's exposed to the elements – inside or outside. This MULTI PURPOSE BOX eliminates the need for time-consuming field modifications.

It's completely sealed so water stays out and wiring stays dry when used w/gasketed accessories. It supports up to 70 lbs (a fan or fixture, too) securely and safely in a damp or dry location.

Perfect for any area with open exposure to wind-driven rain and water spray, it's useable anywhere you would install a gasketed wet- or damp-rated accessory. Uses include pool screen enclosures, open porches, lanais, outdoor kitchens and eating areas, pavilions, and more.

- Colors: white, gray
- UL Listed, raintight with a gasketed accessory
- For use with NEMA 3R accessories
- NEC code-compliant when using gasketed accessory

Also available... Lampholder Cover and Blank Cover with 1/2" knockout. Both sold separately.



**FBC42251W**  
Box

**FBC42252W**  
Blank cover



**FBC42251W**

**FBC42251GY**

### Easy, Box Installation in Wet or Damp Areas...

- 1 Install fitting with conduit. Seal unused openings with supplied plugs.

NOTE: For raintight applications sealing compound (not included) must be used on threaded plugs/ittings.

- 2 Mount box to structural member.
- 3 Pull wire (not included).

CATALOG NUMBER	UPC/DEI/NAED MFG. #018997	DESCRIPTION MULTI PURPOSE BOX	UNIT PKG	STD PKG
<b>FBC42251W</b>	22930	White Box	1	10
<b>FBC42251GY</b>	02591	Gray Box	1	10
<b>FBC42252W</b>	22710	White Cover Blank	1	10
<b>FBC42252G</b>	22711	Gray Cover Blank	1	10

Multi Purpose Box includes 21.8 cu. inch non-metallic box, (4) 3/4" NPT plugs, (2) #12 x 3" screws for fan/fixture bracket.

## Low Profile Box...

Arlington's Low Profile Box offers the time-saving solution to retrofit installations that have shallow wall cavities - or obstructions running behind the wallboard.

This UL Listed 4" diameter non-metallic box installs in an existing 1/2" or 5/8" wall with a 4" hole saw.



**FSC405R**  
Low profile Box

CATALOG NUMBER	UPC/DEI/NAED MFG. #018997	DESCRIPTION LOW-PROFILE BOX	UNIT PKG	STD PKG
<b>FSC405R</b>	04094	Non-metallic, 5.0 cubic inch, 4" Dia.	1	10

Includes box, NM cable connector, (2) mounting wings for 1/2" drywall, (2) mounting wings for 5/8" drywall and (2) installation screws for wings



**Arlington**





**FBC4225W**  
White RAINBOX™

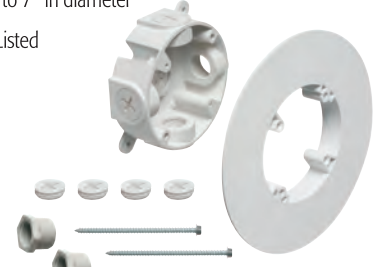
- Save time!...  
No field revisions
- Raintight,  
UL Listed assembly
- Completely  
sealed installation

Arlington's non-metallic **RAINBOX™** is the raintight, labor-saving solution to installing a security camera exposed to the elements, inside or outside.

This box eliminates the need for time-consuming field modifications. It's completely sealed so water stays out and wiring stays dry. Plus, it supports a camera securely and safely.

RAINBOX is perfect for any area with open exposure to wind-driven rain and water spray. Uses include pool screen enclosures, open porches, lanais, outdoor kitchens and eating areas, pavilions, agricultural buildings and more.

- Oversized medallion accommodates bases up to 7" in diameter
- UL/CSA Listed



**FBC4225W**  
White RAINBOX™  
(exploded, with components)



1 Install fitting with conduit. Seal unused openings with supplied plugs. Mount box to structural member.



2 Pull wire (not included).



3 Attach medallion to box with supplied #8 x 1-1/4" screws.

CATALOG NUMBER	UPC/DEI/NAED MFG. #018997	DESCRIPTION RainBox™	COLOR	UNIT PKG	STD PKG
<b>FBC4225W</b>	09679	Non-metallic 21.8 cu. inch box	White	1	5
<b>FBC4225BR</b>	09677	Non-metallic 21.8 cu. inch box	Bronze	1	5

Includes 21.8 cu. inch RAINBOX™, medallion, (2) 1/2" to 3/4" NPT reducing bushings, (4) plugs, (2) #8 x 1-1/4" screws for medallion and (2) #12 x 4" screws for fan/fixture bracket.



**FBC4225W**  
White



**FBC4225BR**  
Bronze

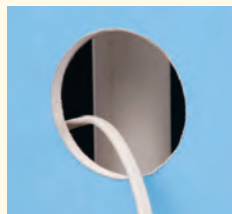


**Arlington**

## ...Perfect for shallow wall cavities or obstructions behind the wall



1 Determine location. Cut opening with 4" hole saw.



2 Pipe obstruction behind wall prevents box installation. Install mounting wing for 1/2 or 5/8" drywall. Pull cable...



3 ...Inserting it into installed NM94 connector. Tilt box to insert it into the stud cavity.



4 Pull box towards you, into the 4" opening. Flip the retaining wings outward. Tighten screws to secure box to wallboard.



5 Finished box installation. Ready to install camera.

# Cable Entry Devices

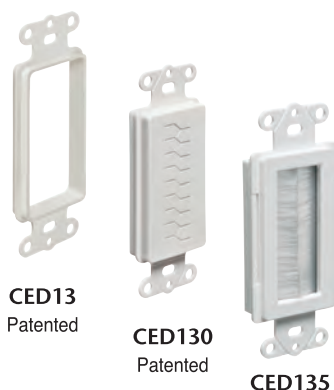
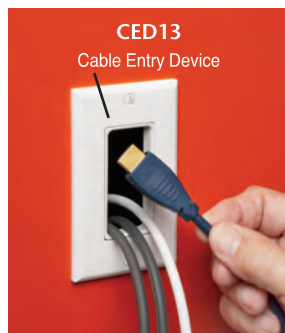
## The attractive way to organize and protect cable

Arlington's **Cable Entry Devices** provide an aesthetically pleasing installation, while organizing and protecting low voltage cable against abrasion. CED13 and CED130 have mounting holes that allow the attachment of a decorator-style wall plate to the low voltage side of a box... providing added support to the installation.

Our heavy-duty **Cable Entry Brackets** are available with a **Slotted or Brush Style Cover**. They hold low voltage cable neatly in place while allowing the pass-through of even the largest HDMI connectors.

CE1RP is the fastest way to install a bundle of Class 2 low voltage wiring, it installs quickly and easily with a hole saw, saving time and money! When tightened, mounting wing screws hold the bracket securely against the wall. Level or straighten the CE1RP bracket by rotating it, then tightening the screws.

- Installs with a 3.5" hole saw in less than a minute
- Adjusts to fit 1/4" to 1-1/2" wall thicknesses



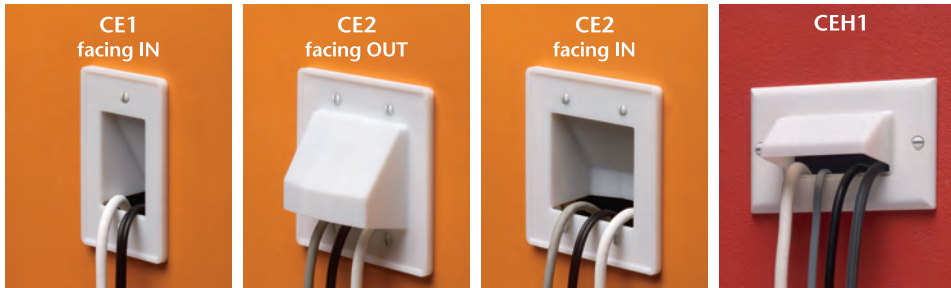
CATALOG NUMBER	UPC/DCI/NAED MFG #01 8997	DESCRIPTION	UNIT PKG	STD PKG
CED13	13000	WHITE NON-METALLIC CABLE ENTRY Device	1	25
CED130	13015	Device w/ slotted cover	1	25
CED130WP	11020	Device (slotted) w/ wall plate	1	10
CED135	04096	Device w/ brush style cover	1	25
CED135WP	11021	Device (brush) w/ wall plate	1	10
CE1RP	10560	Cable entry Bracket w/ reinforced slotted cover	25	25



Arlington



## PLATES that install facing IN or OUT



CATALOG NUMBER	UPC/DCI/NAED MFG. #018997	DESCRIPTION	UNIT PKG	STD PKG
CE1	10460	Single-gang CABLE ENTRANCE PLATE, FACES IN OR OUT	1	25
CE2	10461	2-gang	1	25
CEH1	10480	Single-gang horizontal	1	25

Includes #6 screws



CATALOG NUMBER	UPC/DCI/NAED MFG. #018997	DESCRIPTION	UNIT PKG	STD PKG
CED1	10465	Single-gang WHITE NON-METALLIC CABLE ENTRANCE HOOD	1	25
CEDH1	10478	Single-gang • Horizontal	1	25

Includes #6 screws

## PLATES with removable lower plate for easy access to already installed cables



CATALOG NUMBER	UPC/DCI/NAED MFG. #018997	DESCRIPTION	UNIT PKG	STD PKG
CER1	10473	Single-gang, w/ removable lower plate	1	25
CER2	10474	2-gang, w/ removable lower plate	1	25

Includes #6 screws

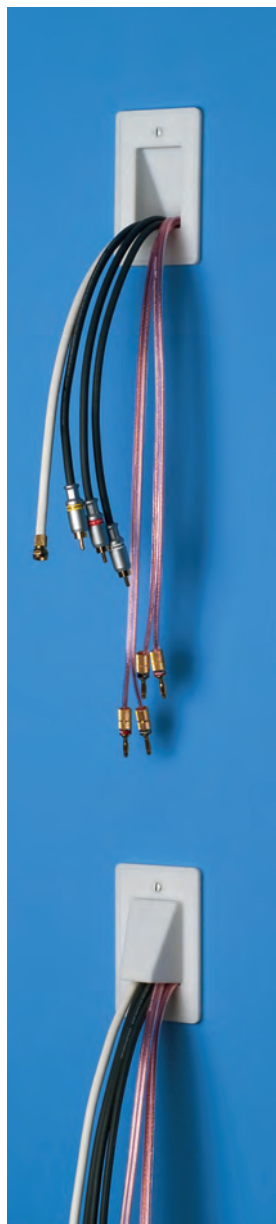
Get *The SCOOP™* reversible non-metallic, entrance hoods and plates. They not only protect cable, but deliver good looks and installation versatility.

- Easy to install facing IN or OUT
- Protect low voltage cable against damage
- Non-rusting white paintable plastic
- Best way to run low voltage cable where you need it

Arlington plates and hoods mount to a box or our LV1 thru LV4 series of low voltage mounting brackets. CED1 is designed especially for decorator style wall plates. In addition to great looks, you get installation versatility with the 'face in' or 'face out' orientation.

For added convenience and cost savings, you can fit HDMI and larger cable connectors through the single-gang horizontal style (CEH1) – without needing a 2-gang plate.

The lower plate on the CER1 and CER2 is removable to allow installation after cables have been installed.



for Horizontal Applications



All SCOOP Plates  
available in White



Patented.

**Arlington**

# TV BOX™

## RECESSED POWER & LOW VOLTAGE COMBO BOXES

Arlington's PLASTIC recessed combination power and low voltage boxes – TV BOX™, TV BRIDGE™ KITS and Indoor IN BOX™ – offer the secure, easy way to mount flat screen TVs flush against a wall.

The job looks great because plugs and connections stay inside these boxes without extending past the wall.

Available in special sizes, as well as 2-, 3- and 4-gang for new or retrofit. Each offers power and/or low voltage in one or more of the other openings. There's a box to fit nearly any application!

- Non-metallic box with paintable white trim plate
- In retrofit, mounting wing screws pull box against wall when tightened – In NEW construction, box screw-mounts to stud
- Easy to cover when not in use with (optional) covers
- cULus Listed

We also offer TV BOX in steel for use in commercial, and other projects that use metal raceway. See pages 32-33.

### Plastic TV Boxes – Sorted by size



**5x8**

TVL508.....20



**Two Gang**

TVBU505 power/low voltage .....21

TVB613 .....23

Kits.....21

Cover .....22



**8x10**

TVBU810..... 19



**Three Gang**

TVBU507 power/low voltage .....21

DVFR3W .....22

Cover .....22



**TV Bridge Kits**

pages 25-29



**Four Gang**

TVB713 .....24

DVFR4W .....22

TVB613 .....23

Cover .....24



**Single Gang**

DVFR1W .....22

TVB712 .....24



**Steel TV Boxes**

pages 30-31



Ultra-Flexible Installation with 8" x 10" TV BOX™

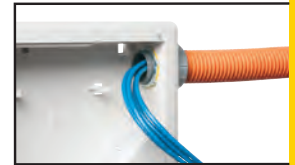


**TVBU810**  
8x10 TV Box™

Arlington's TVB810 TV Box™ delivers the ultimate in versatility for installing wall-mounted TVs in retrofit projects. There's more room in the box for wires. And, you can install it horizontally or vertically to ensure proper positioning of low voltage connections behind the TV.

TVB810 is ideal for home theater systems where multiple connections are needed for sound systems, satellite TV, cable TV, DVRs, and more.

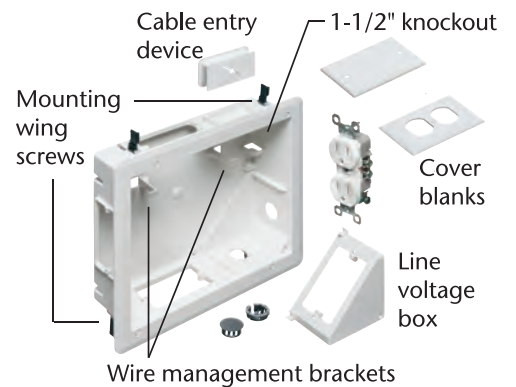
- Accepts standard-style plates with receptacles and decorator-style devices with plates - and Arlington's SCOOP™ series entrance plates and hoods
- In retrofit, mounting wing screws hold box secure against wall. Box mounts to stud in new construction.
- 1-1/2" knockout for ENT or other low voltage wiring
- cULus Listed



**New Work**



**Retrofit**



**Lots of space inside for multiple low voltage connections...Brackets for a neater installation**

CATALOG NUMBER	UPC/DCI/NAED MFG. #018997	DESCRIPTION PLASTIC TV BOX™	UNIT PKG	STD PKG
TVBU810	09758	8"x10" power/low voltage box	1	1
TVBU810GC	13631	8"x10" power/low voltage box with ground clip (for Canada)	1	1

Supplied with cover blanks, wall plate, a SCOOP cable entry device (CED130) and cable connectors for unused openings.

Also available with STEEL box. See pages 30-31





# Low Profile TV BOX™

## For Flush-to-the-Wall TV Installations on Walls as shallow as 3/4"

Arlington's low profile 5" x 8" TV BOX™ is ideal for flat screen TV installations on 1/2" or 5/8" drywall with wall cavity depths as shallow as 3/4" (or deeper).

Applications in new work or retrofit include:

- Furring strips on concrete block walls
- 2x2, 2x3 and 2x4 or larger studs

The low profile TVL508 box is also helpful when plumbing or other obstructions run within the wall cavity.

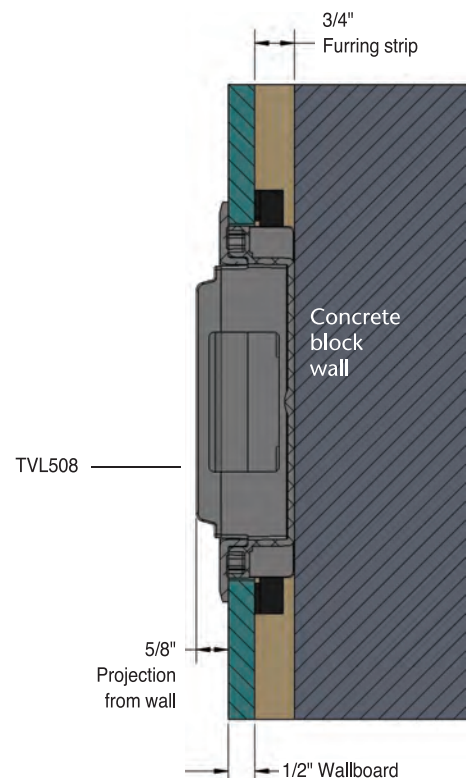
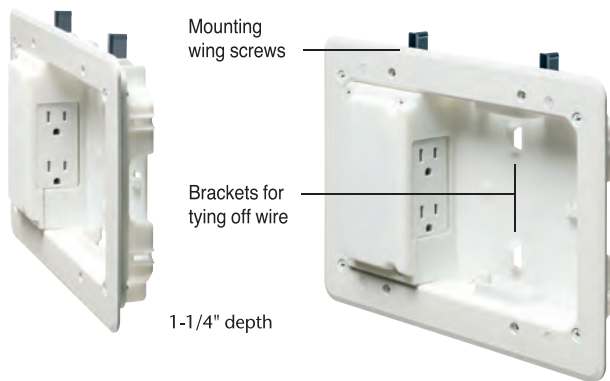
It has lots of room inside for multiple cables and brackets for tying them off – keeping the installation neat and organized.

- Plugs stay inside box so TV mounts closer to the wall
- Mounting wing screws hold box securely in the wall
- Includes UL Listed decorator style receptacle
- cULus Listed

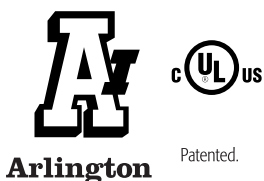


Roomy 5" x 8" box accommodates multiple cables

TVL508  
5" x 8" TV Box™



CATALOG NUMBER	UPC/DEI/NAED MFG. #018997	DESCRIPTION	UNIT PKG	STD PKG
TVL508	52307	5" x 8" power/low voltage box	1	4
TVL508GC	09753	5" x 8" power/low voltage box w ground clip for Canada	1	4



with Power AND Low Voltage in ONE easy-to-install recessed electrical box



Arlington's recessed two- and three-gang TV BOX™ for new work or retrofit allows you to mount flat screen TVs, and other system components flush against the wall.

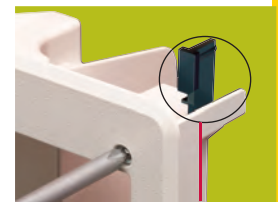
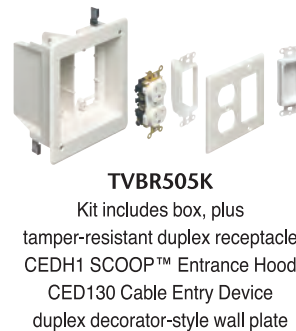
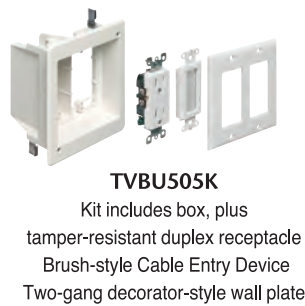
These combo boxes offer power and low voltage for Class 2 wiring of satellite or cable TV, speakers, etc.

Secure installation. Good looks. A great finish.

In retrofit mounting wings tighten against the wallboard to hold the box firmly in place. There's no wobble once the box is installed. In new construction, box mounts to stud for extra-secure support.

Plugs stay inside – don't protrude past the wall

- For walls up to 1-1/2" thick
- OPTIONAL blank cover for two- and three-gang styles. See page 22
- cULus Listed



**New Work Installation**

1 Attach box to stud. Note tabs for proper positioning of box for drywall.



2 Attach paintable trim plate with screws provided.



OPTIONAL for new work: Tighten mounting wing screws to pull the box securely against the wallboard and provide added box stability.



**For installation in Existing Wall**

1 Determine box location. Use box (without trim plate) as template for hole.



2 Cut drywall. Attach trim plate to box. Install box assembly in opening.



3 Tighten mounting wing screws to pull the box securely against the wallboard.



CATALOG NUMBER	UPC/DCI/NAED MFG. #018997	DESCRIPTION NON-METALLIC TV BOX™	UNIT PKG	STD PKG
TVBU505	09636	2-gang, power/low voltage	1	4
TVBR505K	09670	2-gang, power/low voltage kit for retrofit	1	4
TVBU505K	09682	2-gang, power/low voltage kit for new work or retrofit	1	4
TVBU507	09661	3-gang, One power/two low voltage	1	4

Add suffix "GC" to catalog number when ordering with ground clip for use in Canada (i.e. TVBU505GC)

Patented. Other Patents Pending.





### Recessed Electrical Boxes • Optional Covers

Arlington's recessed indoor IN BOX™ for new or retrofit, allows LCD and plasma TVs (furniture too!) to be placed flush against the wall.

For power or low voltage, indoor IN BOX mounts securely to the stud (new construction) or drywall (retrofit).

It's a recessed box so plugs don't extend past the wall, like they do in a regular box. You can mount TVs flush or push furniture closer to the wall.

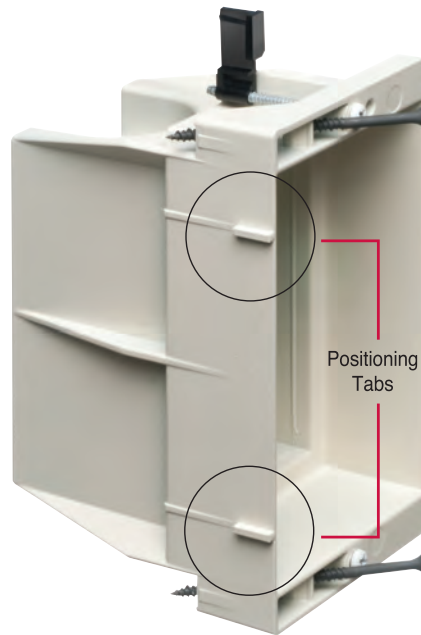
- Positioning tabs for 1/2" wall thickness assure accurate placement on stud
- Mounting wings hold box securely against wall when screws are tightened
- Textured, paintable trim plate covers edges of cut drywall
- Horizontal or vertical mounting
- Available in multiple styles for new construction or retrofit
- UL/CSA Listed



**DVFR1W**  
Single-gang indoor IN BOX



### Single-gang



CATALOG NUMBER	UPC/DCI/NAED MFG. #018997	DESCRIPTION INDOOR IN BOX™	COLOR	UNIT PKG	STD PKG
DVFR1W	14330	Single-gang Indoor IN BOX™	White	1	4
DVFR2W	14331	2-gang Indoor IN BOX™	White	1	4
DVFR3W	14340	3-gang Indoor IN BOX™	White	1	1
DVFR4W	14342	4-gang Indoor IN BOX™	White	1	1

Add suffix "GC" to catalog number when ordering with ground clip for use in Canada (i.e. DVFR1WGC). Patented. Other Patents Pending.

Arlington's box cover fits single-, 2- or 3-gang indoor IN BOX and 2-gang TV Box recessed mounting brackets. Use it to keep unused boxes clean until you're ready to complete the installation. Unused boxes at eye-level look better and blend into the wall with an Arlington Box Cover.

- Easy press-on installation
- Available in paintable white



**DVFR3C**  
3-gang cover

Fits IN BOX™ above and TV BOX™ (see page 21)

### OPTIONAL Box Cover for IN BOX™ or TV BOX™



CATALOG NUMBER	UPC/DCI/NAED MFG. #018997	DESCRIPTION NON-METALLIC BLANK COVER	COVER COLOR	UNIT PKG	STD PKG
DVFR3C	14337	Non-metallic Blank Cover for single- or 2-gang box	White	10	10
DVFR3C	10570	Non-metallic Blank Cover for 3-gang box	White	10	10



**Arlington**

# 4-gang Recessed Power and Low Voltage **PLASTIC** Electrical Boxes for Flat Screen TVs

## Non-metallic TV BOX™



TVB613 includes recessed TV BOX w/ trim plate, low voltage separator, NM cable connector and installation screws



1 Install NM94 cable connector, and power and low voltage cables.



2 Install low voltage separator if using low voltage in two-gang box.



3 Install power and low voltage wiring devices.

Arlington's recessed TV BOX™ for new or retrofit allows flat screen TVs to mount flush against a wall.

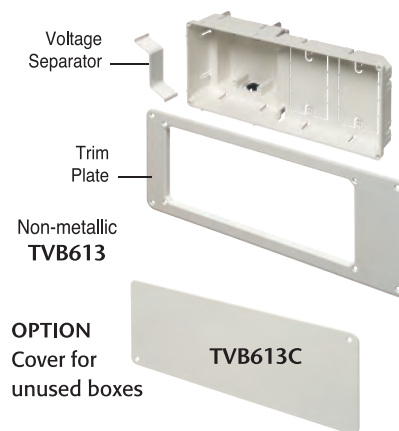
Its double-gang design allows you to install two duplex receptacles or low voltage devices. Or you can use the supplied box separator to install one low voltage device and one duplex receptacle. TV BOX also has two additional built-in mounts for low voltage, data/media connections (i.e. speakers or satellite TV).

The 13" wide, non-metallic TV BOX mounts between 16" o.c. studs for a secure horizontal or vertical installation.

**Looks great. Saves space. Plugs stay inside the box without extending past the wall.**

- Textured, paintable trim plate covers edges of cut drywall.
- UL/CSA Listed

See page 31  
4-gang steel box



CATALOG NUMBER	UPC/DCI/NAED MFG. #018997	DESCRIPTION PLASTIC TV BOX™	UNIT PKG	STD PKG
TVB613	09630 (white)	13" wide, recessed box 2-gang, 26.2 cu. inch power/low voltage	1	1
TVB613C	09631	Non-metallic blank white cover fits 13" TV Box	5	5

Add suffix "GC" to catalog number when ordering TV BOX with ground clip for use in Canada (i.e. TVB613GC)

Patented. Other Patents Pending.





# PLASTIC Multiple Gang TV BOX™ with Angled Openings

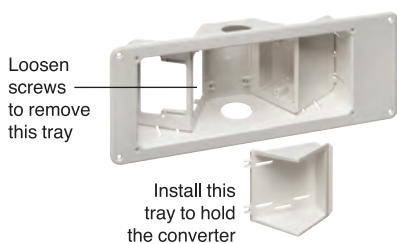
Designed for new or retrofit, these TV Boxes have angled outlet boxes that take convenience to a new level.

The versatile TVB712 offers power and/or low voltage. The larger TVB713 has power and low voltage openings for video, audio and other datacom connections. Two angled outlet boxes keep plugs behind the wall surface – and allow for the use of close-clearance TV mounting hardware. Now you really can mount a TV flush against a wall.

- Non-metallic, paintable trim plate
- For new work or retrofit
- Optional cover for unused 13" box
- Available with ground clip for use in Canada

Installation of Arlington's TVB713 recessed TV BOX™ in new work or retrofit is fast and easy.

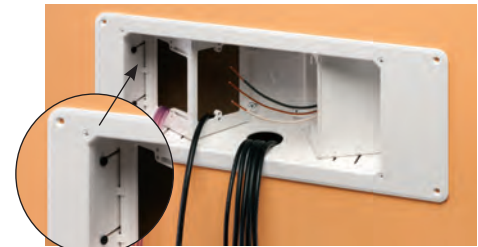
The supplied interchangeable tray may be used to hold the digital converter supplied by some cable companies.



## TVB713 Retrofit Installation



1 Cut hole next to stud (use enclosure, without trim plate, as a template). Pull wires. Insert box.



2 Attach assembled enclosure w/ trim ring to stud through slotted holes in the side walls.



3 Install enclosure assembly to wall with outer screws.



4 Install devices. Two low voltage, one power shown.



- Secure installation – TVB713 mounts between studs in new or retrofit. Positioning tabs for 1/2" wall thickness assure accurate placement on stud in new construction
- For retrofit, use enclosure (without trim plate) as a template for the wall opening

## New Construction Installation



1 Attach box to stud through slotted holes.



2 Pull power and low voltage wire. After installing the wall, continue with retrofit steps 3 and 4 (above).



3 Make connections. Done...ready to accommodate close-clearance TV mounting hardware.

CATALOG NUMBER	UPC/DCI/NAED MFG. #018997	DESCRIPTION	UNIT/STD PKG
TVB712	09712	Power and/or low voltage	1
TVB713	09713	Power and multiple low voltage openings w/ interchangeable tray	1
TVB613C	09631	Non-metallic, blank cover for TVB713	5

Add suffix "GC" to catalog number when ordering TV BOX with ground clip for use in Canada (i.e. TVB713GC).



Patented. Other Patents Pending.



# TV BRIDGE™ KITS

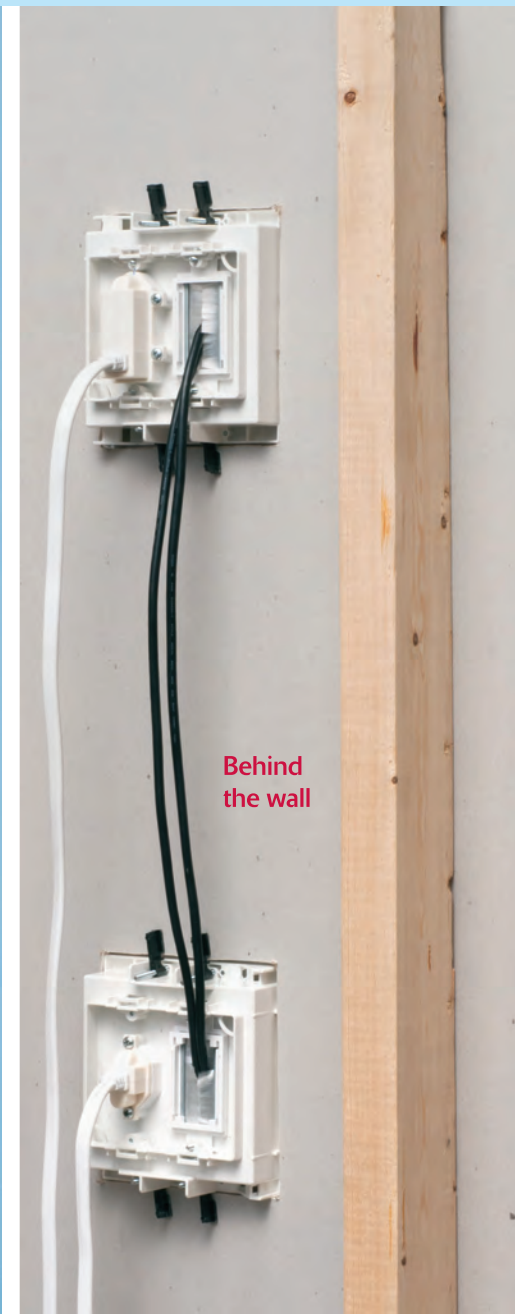
**NON-METALLIC, PRE-WIRED, PRE-ASSEMBLED**

Arlington's non-metallic TV Bridge™ kits offer the time-saving, secure way to install a TV and additional components.

Installation is faster because the advance work is already done! Our kits include two fully assembled, recessed boxes and pre-wired connections.

All you do is cut two openings in the wall, near a power source. There's no need to cut into framing members or to run power from a panel box.

- Mounting wing screws hold the boxes secure in the wall
- Plugs and connections stay inside the recessed boxes so TV mounts flush
- No mess! – wires stay hidden behind the wall
- TV Bridge III is UL LISTED to meet NEC 400.7 (11) for interconnecting wiring between an existing receptacle and an inlet.



Patented.  
Other patents pending.





# UL Listed TV BRIDGE™ III Kits

## Pre-wired, Pre-assembled

Arlington's new UL Listed TV Bridge™ III kits are the easiest, fastest way to install a flat screen TV



### Easiest Installation



1 Determine box location, avoiding framing members and obstructions. Cut openings, with the top in desired location for TV; the bottom directly below it, near an existing electrical outlet. (Templates supplied for cutouts). Fish power cable through top hole to bottom hole.



2 Install upper mounting box in opening by tightening four flag screws.



No mess!  
Wires are hidden behind the wall



CATALOG NUMBER	UPC/DEI/NAED MFG. #018997	DESCRIPTION	UNIT/STD PKG
TVBR21K	24220	Two-gang upper box, Single-gang lower box	1
TVBR22K	24222	Two-gang upper box, and lower box	1

Includes pre-assembled UL Listed power cable with upper and lower mounting boxes with installed brush-style cable entry devices, (1) UL Listed 6 ft, 14 gauge power extension cord, (2) #8 x 1/2" pan head screws and template for cutouts.

3 Attach male end of power cable to back of lower mounting bracket using (2) #8 x 1/2" screws (provided).

4 Insert lower assembly into opening and tighten four flag screws to hold it to the wall.

5 Energize the TV Bridge III kit by plugging the supplied power extension cord into existing receptacle or surge suppressor, and male end of power cable.

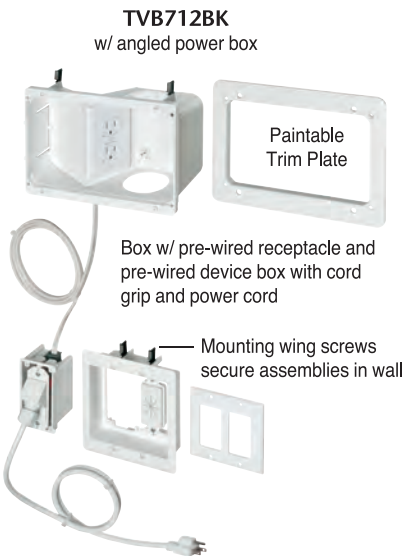
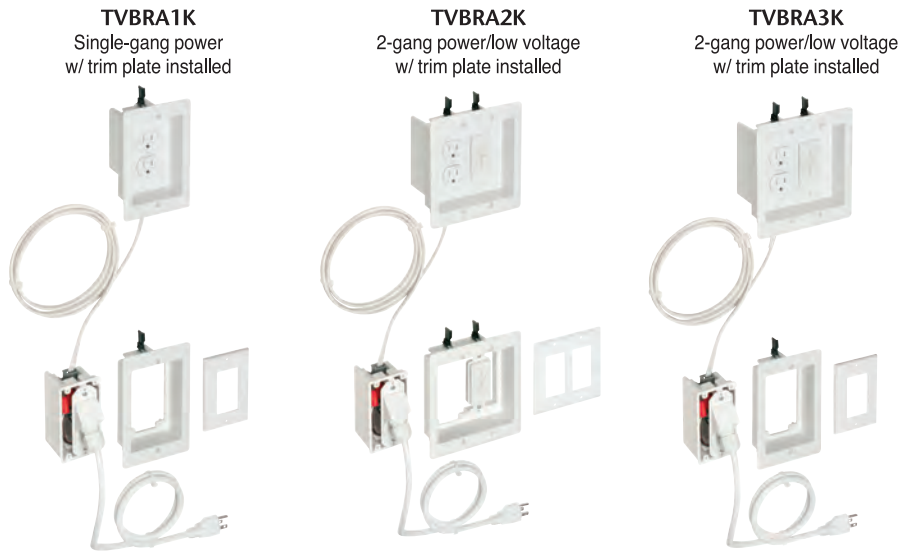


Arlington

Patented. Other Patents Pending.

# Pre-Wired, Pre-Assembled Box Kits for Flat Screen TV Installations

Pre-wired TV Bridge™ II Kits come in four styles... with assembled recessed boxes, pre-wired receptacle, device, flexible cord and cord grip.



CERTIFIED to CAN/CSA STD C22.2 No. 18.2



ETL LISTED CONFORMS to UL STD 514C

Arlington's new non-metallic TV Bridge™ II box kits include two boxes and the necessary connections needed to install the TV and additional components.

Installation is *faster* because we've done the advance assembly work for you! You'll get a fully assembled, recessed box, with pre-wired receptacle, device, flexible cord and cord grip.

All you need to do is cut *two* openings in the wall, near a power source. There's no need to cut into your framing members or run power from a panel box.

- Mounting wing screws hold the boxes secure against the wall
- Plugs and connections stay inside the recessed boxes so TV mounts flush against the wall
- No mess! – wires stay hidden behind the wall

TV Bridge™ II kits come in four styles...

- TVB712BK** power/low voltage box (power side angled)
- TVBRA2K** (2) 2-gang power/low voltage boxes
- TVBRA1K** (2) single gang power boxes
- TVBRA3K** 2-gang power/low voltage box at top, power box at bottom



CATALOG NUMBER	UPC/DEI/NAED MFG. #018997	DESCRIPTION TV BRIDGE™ II KIT	UNIT/STD PKG
TVBRA1K	24180	w/ single-gang boxes	1
TVBRA2K	24181	w/ 2-gang power/low voltage boxes	1
TVBRA3K	24195	2-gang power/low voltage upper boxes, single gang (lower) box	1
TVB712BK	12781	w/ 2-gang power/low voltage box (power w/ angled opening)	1

Add suffix "GC" to catalog number when ordering TV BOX with ground clip for use in Canada (i.e. TVB713GC). All kits include (2) recessed boxes, (1) pre-wired device box assembly, trim plates, cover plates and CED130 cable entry device.

Patented. Other Patents Pending.



## Complete, Easy-to-install Kit for Flat Screen TVs

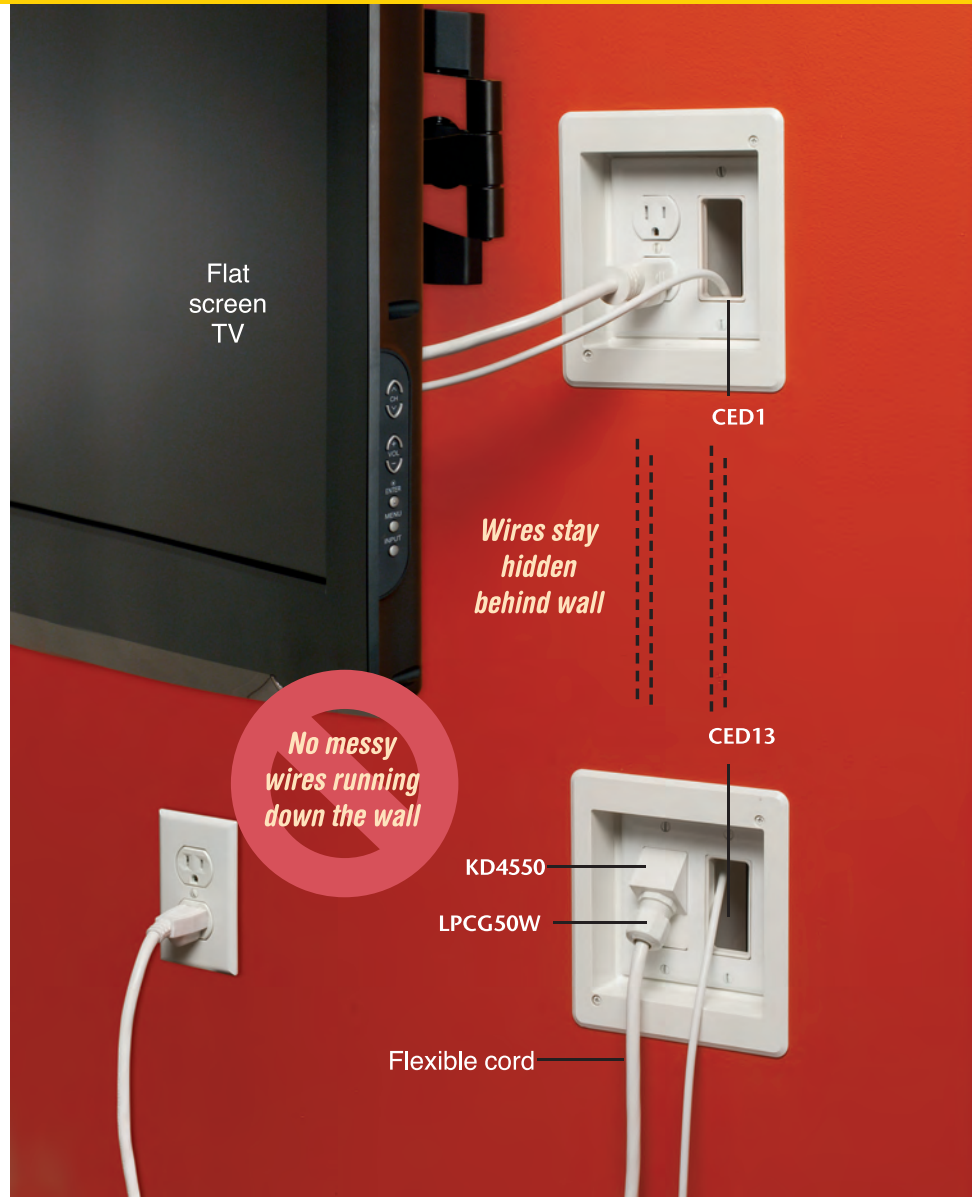
Arlington's **TVBR2505K TV Bridge™** includes TWO recessed power/low voltage combo boxes and all the connections you need (except NM cable) to install a flat screen TV and additional components.

The best part is, there's no need to run cable from a panel box – or cut holes in your framing members.

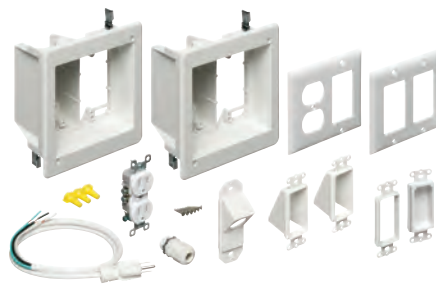
Just cut two holes in the wall and access power from an existing, nearby source.

- Fast, easy, convenient – saves time and money!
- Secure installation. Good looks. A great finish.
- All wires stay hidden behind the wall – no messy wires running down the wall from TV to components
- Plugs stay inside the electrical box – don't protrude past the wall
- Mounting wings hold boxes securely against wall when screws are tightened
- Paintable trim plate
- 18.0 cubic inch recessed boxes

### TV Bridge™ – Complete, Easy-to-install Kit for Flat Screen TVs



TVBR2505K



#### What's included:

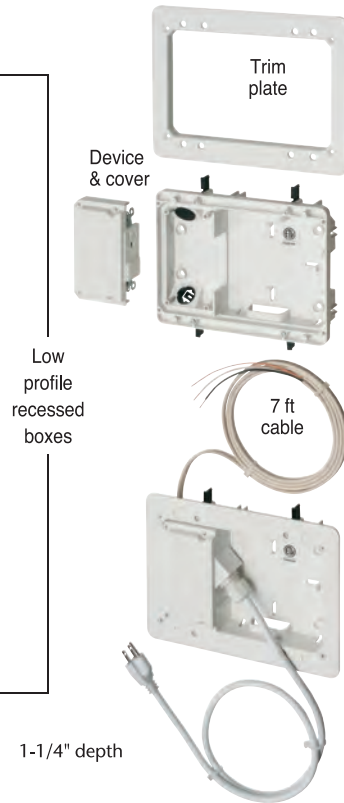
- (2) TVBR505 recessed dual voltage boxes
- (2) cover plates
- (2) CED1 entrance hoods
- (1) CED13 cable entry device
- (1) CED130 cable entry device
- (1) KD4550 45° knockout device
- (1) tamper-resistant duplex receptacle
- (1) 6 ft. 14 AWG cord
- (1) LPCG50W cord grip
- Installation screws
- (3) wire nuts

CATALOG NUMBER	UPC/DCI/NAED MFG #01 8997	DESCRIPTION TV BRIDGE™	UNIT/STD PKG
TVBR2505K	09658	TV Bridge™	1
TVBR2505KGC	09018	TV Bridge™ with ground clip (for Canada)	1



Arlington

## For Flush-to-the-Wall TV Installations on Walls as shallow as 3/4"



Save time and money with Arlington's TV Bridge™ KIT with low profile boxes. This all-in-one package is ideal for flat screen TV installations on 1/2" or 5/8" drywall with wall cavity depths as shallow as 3/4" (and deeper). Applications in new work or retrofit include:

- Furring strips on concrete block walls
- 2x2, 2x3 and 2x4 or larger studs

The low profile box is also helpful when plumbing or other obstructions run behind the wall. It has lots of room inside for multiple cables, and brackets for tying them off.

- Plug stays inside upper box so TV mounts closer to the wall
- Mounting wing screws hold boxes securely in the wall
- Kit includes all you need to install a flat screen TV close to a wall and connect to additional components



Installation of the **TVL2508K Low Profile TV Bridge Kit** is quick and easy. Just cut two openings in the wall, near a power source. *There's no need to run power from a panel box or to cut into framing members.*

### TVL2508K Installation...



1 After locating position of TV and installing mounting bracket, cut holes for upper and lower boxes in a clear space within the same stud bay.

### LOWER Box...



2 Position lower box so that supplied cord reaches existing receptacle (or power conditioner). Feed NM cable connector from lower box, behind the wall, to upper box opening. Low voltage cable and speaker wire may also be pulled at this time.

### UPPER Box...



4 Install trim plate. Pull NM cable through connector. Install box in hole by tightening wing screws (see 3).



5 Attach electrical receptacle to receptacle mounting bracket.



3 Install box/power cord assembly by tightening four wing screws.



6 Attach receptacle mounting bracket to box.



CATALOG NUMBER	UPC/DEI/NAED MFG. #018997	DESCRIPTION	UNIT/STD PKG
TVL2508K	52305	5" x 8" power/low voltage recessed TV Bridge Kit	1
TVL2508KGC	52306	5" x 8" power/low voltage recessed TV Bridge Kit w ground clip for Canada	1



**STEEL**

Recessed TV Box

for Use with Metal Raceway

# TV BOX

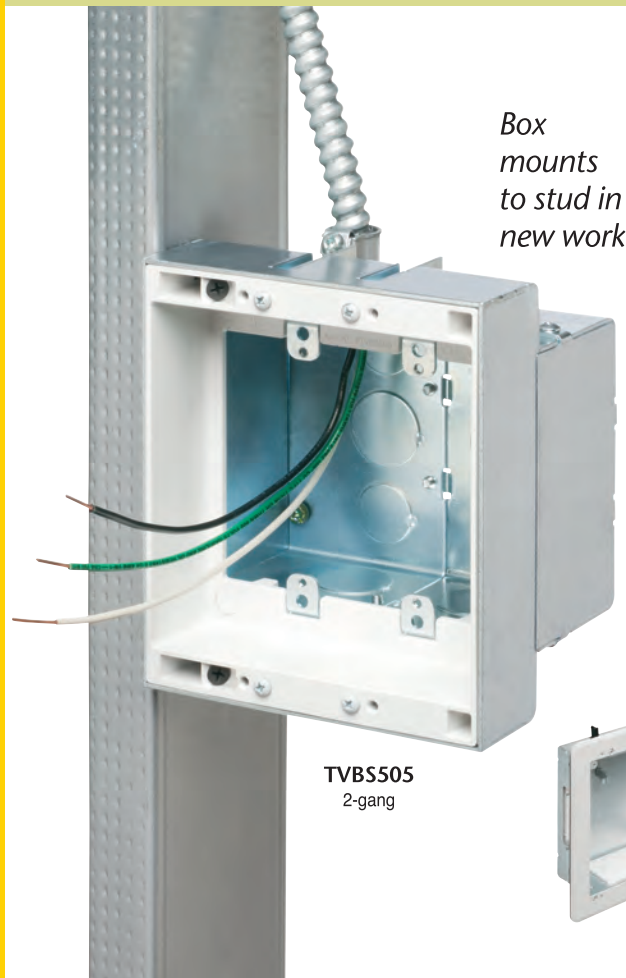
## RECESSED POWER & LOW VOLTAGE COMBO BOXES

Designed for use in commercial and other construction where metal raceway is used, Arlington's STEEL combination TV BOX™ provides power and/or low voltage in one or more of the openings.

The recessed design of these steel boxes keeps plugs and connectors inside the box. Connections don't extend past the wall, so flat screen TVs mount flush against a wall.

TV BOX is available in 2-, 3- and 4-gang styles, and 8x10.

- Steel box with non-metallic paintable white trim plate
- Easy to install, secure installation
- Mounting wings on the 8x10, two- and three-gang styles hold boxes securely against the wall in retrofit projects
- Boxes screw-mount to stud in new construction
- Optional cover for unused boxes
- cULus Listed



Patented. Other Patents Pending.

### COVERS

See chart on next page



## Recessed Power and Low Voltage Electrical Boxes for Flat Screen TVs

### Steel TV BOX™ Installation (2-gang TVBS505) – Existing Construction



Mounting wings hold 2- and 3-gang boxes securely in wall.

1 Cut hole. Use enclosure (without trim plate) as a template.



2 Pull cable. Insert box in hole. Tighten mounting wing screws to hold box securely against wall.



Note Install voltage separator for power and low voltage.



3 Install devices, then the wall plates.

### Steel TV BOX™ Installation (4-gang TVBS613) – New Construction



1 Attach box to stud. Pull wire.



2 After drywall is installed, add trim plate, then install enclosure assembly to the wall with outer screws.



3 Install voltage separator.



4 Install devices and plates.

CATALOG NUMBER	UPC/DCI/NAED MFG. #018997	DESCRIPTION	UNIT PKG	STD PKG
TVBS505	37955	2-gang, steel box w/ white non-metallic trim plate	1	4
TVBS507	37956	3-gang, steel box w/ white non-metallic trim plate	1	4
TVBS613	09633	2-gang, steel, power/low voltage (white trim plate) (Plus two low voltage mounts)	1	1
TVBS810	09757	Steel power/low voltage box	1	1
DVFR3C	14337	White non-metallic blank cover for 2-gang TVBS505	10	10
TVB613C	09631	White non-metallic blank cover for 13" TVBS613	5	5
DVFR3C	10570	White non-metallic blank cover for 3-gang TVBS507	10	10

Patented. Other Patents Pending.



TVB613C  
Non-metallic cover  
for TVBS613



TVBS613



Arlington



# Floor Box & Countertop Box Kits

## Flush to Floor Receptacle Installations

# FLOOR BOX™ KITS

**KITS • BOXES • TRIM KITS • ACCESSORIES**

**PAGES 36-39**

Arlington offers a full line of Floor Box Kits, Boxes, Cover Trim Kits and Accessories for nearly any job site condition or application – new concrete, new construction and retrofit projects.

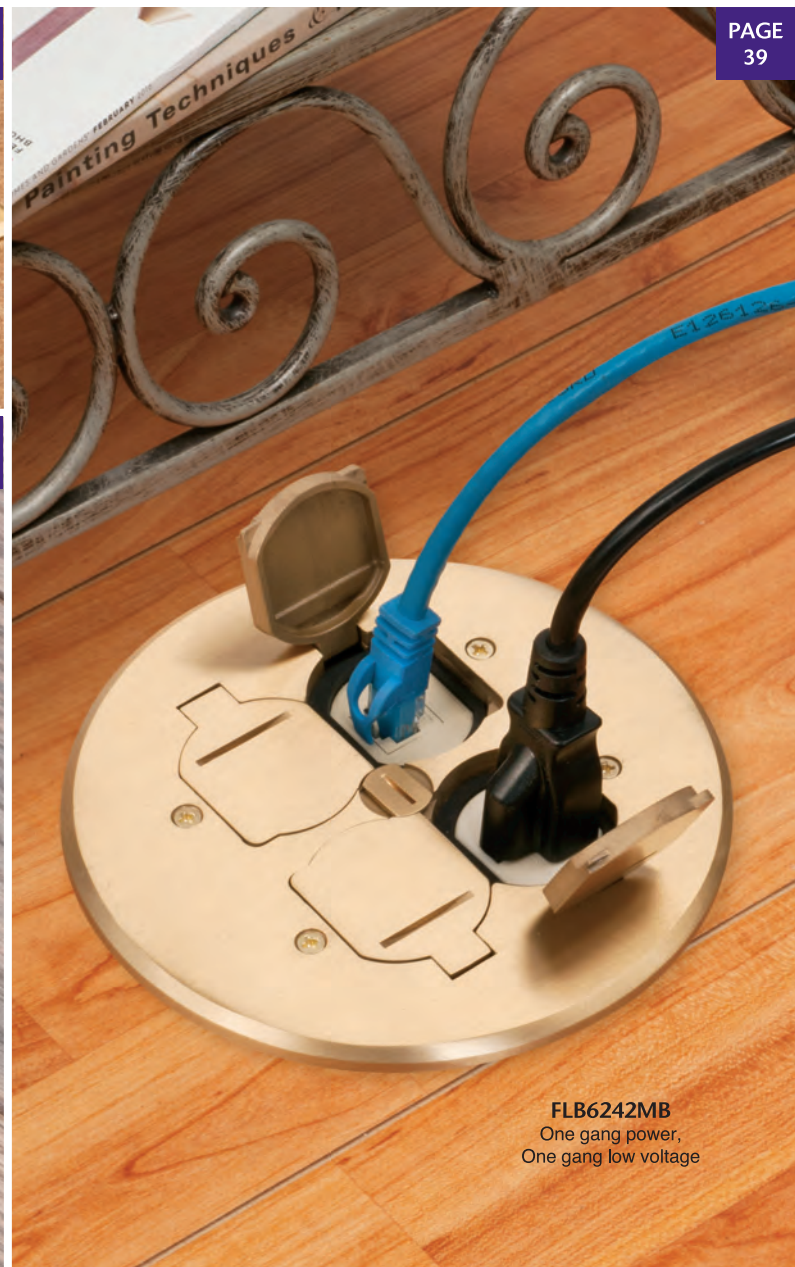
Our FLOOR BOX KITS offer installers the low cost, convenient way to install a receptacle in the floor – with a cover that's flush with the floor.

The floor box kits in this brochure are of special interest to the low

voltage installer as they are combination boxes with power and low voltage in the same box. For added convenience many of our boxes and covers are interchangeable with other manufacturers products.

We offer non-metallic or steel boxes...with metal or non-metallic covers in a variety of colors and finishes!

Visit our website to see the entire line: [www.aifittings.com](http://www.aifittings.com)





# COUNTERTOP BOX™

**EASY, NO GLUE!**

**PAGES 34-35**

Arlington's Countertop Boxes provide multiple options for installing a UL Listed receptacle. Choose any of these device options, with a gasketed TRAPDOOR COVER that closes flush with the countertop, preventing damage to devices in the box.

- Combination with (TR) receptacle and two USB ports
- Tamper resistant (TR) receptacle
- OR a Tamper resistant (TR) decorator-style GFCI

Here's the easy, secure, NO GLUE installation! A 'bendable' spring clip holds the box securely against the underside of a countertop up to 1-1/2" thick – and inserts easily into the opening.

Countertop box kits comply with NEC 406.5 (E) for use in countertops and similar work surfaces.





# Countertop Box Kits With Square Steel Boxes

Choose the cover and device that works the best for you and your customers



## with ROUND Stainless Steel Trapdoor Covers

CATALOG NUMBER	UPC/DEI/NAED MFG. #018997	DESCRIPTION COUNTERTOP BOX KITS	INSTALLED UL LISTED DEVICE	UNIT/STD PKG
FLBT4465USS	22942	Steel box with installed UL Listed device. ROUND	20A decorator-style TR receptacle, with (2) USB ports	1
FLBT4465SS	22941		20A decorator-style TR receptacle	1
FLBT4465GSS	22940	<b>Stainless steel</b> trapdoor cover	Tamper and Weather Resistant (TWR) 20A decorator-style GFCI receptacle	1



FLBT4400USS



FLBT4400SS



FLBT4400GSS

## with RECTANGULAR Stainless Steel or Black COVERS

CATALOG NUMBER	UPC/DEI/NAED MFG. #018997	DESCRIPTION COUNTERTOP BOX KITS	INSTALLED UL LISTED DEVICE	UNIT/STD PKG
FLBT4400USS	00752	Steel box with installed UL Listed device. <b>Stainless steel</b>	20A decorator-style TR receptacle, with (2) USB ports	1
FLBT4400SS	00751		20A decorator-style TR receptacle	1
FLBT4400GSS	00753	trapdoor cover	Tamper and Weather Resistant (TWR) 20A decorator-style GFCI receptacle	1
FLBT4400UBL	00771	Steel box with installed UL Listed device. <b>Black</b>	20A decorator-style TR receptacle, with (2) USB ports	1
FLBT4400BL	00768		20A decorator-style TR receptacle	1
FLBT4400GBL	00770	trapdoor cover	Tamper and Weather Resistant (TWR) 20A decorator-style GFCI receptacle	1

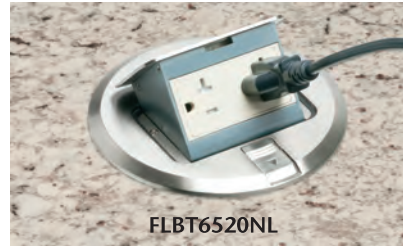
### Black Trapdoor Covers



FLBT4400GBL



# Countertop Box Kits With Round Plastic Boxes



Arlington's Countertop BOX KITS with **round plastic boxes** and round metal covers come with an installed **UL Listed tamper resistant decorator-style GFCI ...a tamper resistant receptacle... Or a TR receptacle with two USB ports!**



The gasketed, brass or nickel-plated ROUND TRAPDOOR COVERS also **cover miscut openings**. They allow for parallel-to-the-backsplash installation, and close flush with the countertop, preventing damage to the devices in the box.

## Round Boxes cover miscut openings, and allow for parallel-to-the-backsplash installation

### Round Plastic Box with ROUND Metal Covers

CATALOG NUMBER	UPC/DEI/NAED MFG. #018997	DESCRIPTION METAL COVER FINISH	INSTALLED UL LISTED DEVICE	UNIT/STD PKG
FLBT6520UMB	22056	Brass	20A decorator-style TR receptacle, with (2) USB ports	1
FLBT6520MB	22112		20A decorator-style Tamper Resistant receptacle	1
FLBT6520GMB	22110		20A decorator-style Tamper Resistant GFCI receptacle	1
FLBT6520UNL	22057	Nickel-plated	20A decorator-style TR receptacle, with (2) USB ports	1
FLBT6520NL	22113		20A decorator-style Tamper Resistant receptacle	1
FLBT6520GNL	22111		20A decorator-style Tamper Resistant GFCI receptacle	1



FLBT6520MB



FLBT6520GMB



FLBT6520UMB



FLBT6520NL  
with 20A decorator-style TR receptacle



FLBT6520GNL  
with 20A decorator-style TR, GFCI receptacle



FLBT6520UNL  
with 20A decorator-style TR receptacle w (2) USB ports

### Easy to install



1 Determine box location. Cut a 5" diameter opening in countertop. Insert box, bending the clip as necessary to go through opening.



2 Secure box to countertop by tightening two #10 screws inside box...



UNDERSIDE of COUNTER

3 ...drawing the box securely against the underside of the counter. NO GLUING!



4 Wire receptacle in accordance with National, State and local codes.



5 Install trapdoor coverplate to box using the two #6-32 screws provided. Note: Round cover hides miscut openings



6 Rotate box/cover assembly into position, lining it up parallel with the countertop and backsplash.



PARALLEL Installation

**NO GLUING!**  
THREE RECEPTACLE OPTIONS

c UL US  
Receptacle only

**Arlington**



## Non-metallic box • 4" metal covers & plastic blanks

### Fast...Nearly Flush

Arlington's **DROP IN™ FLOOR BOX KITS** offer the **fastest way to install a box nearly flush** in an existing floor.

Designed for TIME-SAVINGS and a neat installation, DROP IN Box installs in MINUTES with a SINGLE hole saw and sits just 1/8" off the floor!

- Accommodates most 4" round covers. Arlington's brass or nickel-plated brass LOW PROFILE METAL COVERS seat into a metal or non-metallic ring, reducing trip hazard
- Gasketed flip lid keeps water out; protects the unused receptacle

**Brass or Nickel 4" ROUND METAL COVERS with flip lids or plugs**



with Low Profile Round Metal Covers...

CATALOG NUMBER	UPC/DCI/NAED MFG. #018997	DROP IN™ FLOOR BOX KITS FINISH, COVER STYLE	UNIT/STD PKG
<b>METAL COVER w Two FLIP LIDS</b>			
FLB4360MB	00760	Non-metallic box and bracket, Brass cover	1
FLB4360NL	00761	Non-metallic box and bracket, Nickel-plated Brass cover	1
<b>METAL COVER w Two THREADED PLUGS</b>			
FLB4362MB	09810	Non-metallic box, Brass cover	1
FLB4362NL	09812	Non-metallic box, Nickel-plated Brass cover	1



**DROP IN BOX Kits** include non-metallic box, round 4" diameter metal cover with two flip lids or threaded plugs, non-metallic gasket support plate, gasket, carpet ring, UL Listed 15 amp TR duplex receptacle, NM94 and NM95 cable connectors, (3) #8 x 1/2" flathead screws and (1) #6 x 1/2" screw. Non-metallic mounting bracket with FLB4360MB, FLB4360NL, FLB4362MB, FLB4362NL. Matching metal bracket with FLB4364MB and FLB4364NL.

Also available with non-metallic BLANK COVERS – perfect for covering unused receptacles.

### with a Single Hole Saw Cut

**5 MINUTE Installation**

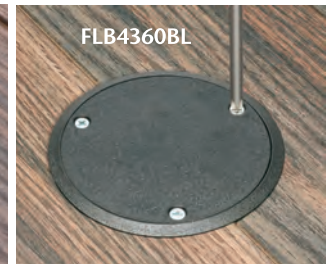


- 1 Determine box location (avoid structural framing members). Use a hole saw to cut a 4-1/4" diameter opening through the floor and subfloor.
- 2 Insert mounting bracket, using indicator marks to align bracket for proper receptacle orientation. Tighten (3) wing screws to secure bracket to floor.
- 3 Pull cable. Install in box with supplied cable connector. Attach box to bracket with (3) #8 x 1/2" sheet metal screws (supplied) through the U-shaped cut outs in the box flange.
- 4 Wire receptacle. Install in box. Attach supplied gasket support plate to receptacle with #6 x 1/2" screw.
- 5 Cover Installation. Install gasket. Attach metal cover (or blank) to box with (3) supplied #8 x 1/2" flathead machine screws.



# DROP IN™ Floor BOX Kits

## Nearly Flush! • Fastest Floor Box Installation!



### or Plastic Blanks

The non-metallic **Blank Covers** are perfect for covering unused receptacles. To use the receptacle remove the blank cover.

#### Five decorator cover colors:

Dark brown, light almond, gray, caramel, and black – each with a matching non-metallic mounting bracket and carpet ring.



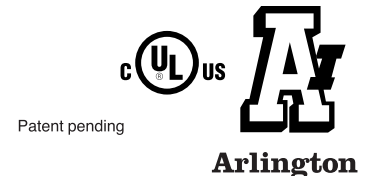
**Blank Cover Installation**  
Follow steps 1 through 5 on facing page.

When using the in-use non-metallic cover, substitute the colored in-use plate for the black gasket support plate.

CATALOG NUMBER	UPC/DCI/NAED MFG. #018997	DROP IN™ FLOOR BOX KITS	COLOR	UNIT/STD PKG
<b>NON-METALLIC BLANK COVERS</b>				
FLB4360BR	00763	Non-metallic box	Dark Brown	1
FLB4360LA	00766	Non-metallic box	Light Almond	1
FLB4360GY	00765	Non-metallic box	Gray	1
FLB4360CA	00764	Non-metallic box	Caramel	1
FLB4360BL	00762	Non-metallic box	Black	1

ADD SUFFIX 'GC' to order with Ground Clip (Canada)

**DROP IN BOX Kits with BLANK NON-METALLIC COVERS** include non-metallic box, round 4" diameter non-metallic cover blank, non-metallic gasket support plate, gasket, carpet ring, UL Listed 15 amp TR duplex receptacle, mounting bracket, NM94 and NM95 cable connectors, (3) #8 x 1/2" flathead screws and (1) #6 x 1/2" screw.





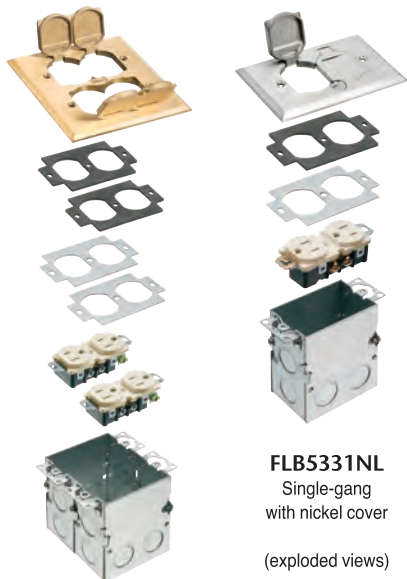
## Square, rectangular metal covers, steel boxes

### Covers with Flip Lids

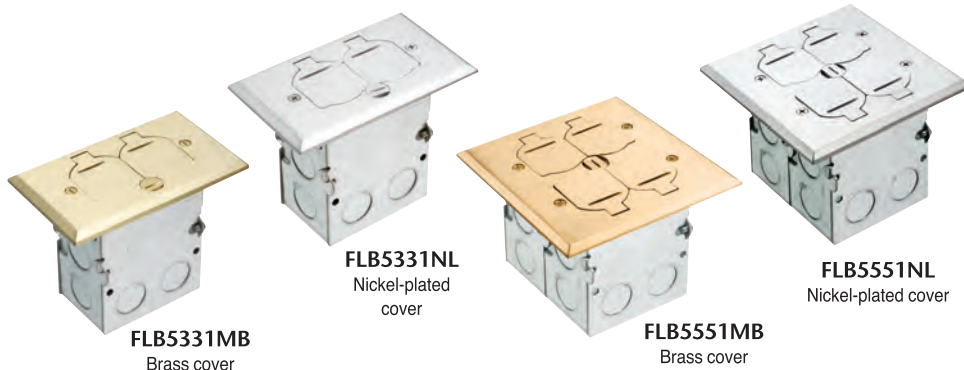
Arlington's **STEEL FLOOR BOX KITS** give installers a low cost, convenient way to install a receptacle in a new or existing floor.

**Our Listed FLOOR BOX KITS feature Single or Two-gang Steel Boxes with Metal Covers that deliver easy flush-to-the-floor installation.**

- Metal covers hide miscut flooring; gaskets prevent water intrusion; flip lids or threaded plugs protect the box when it's not in use.
- Brass and nickel-plated brass **Metal Covers** fit our boxes and **other manufacturers' boxes**. Covers also sold separately.



**FLB5331NL**  
Single-gang  
with nickel cover  
(exploded views)



**FLB5331MB**  
Brass cover

**FLB5331NL**  
Nickel-plated  
cover

**FLB5551MB**  
Brass cover

**FLB5551NL**  
Nickel-plated cover

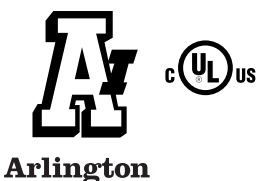
**FLB5551MB**  
Two-gang with brass cover

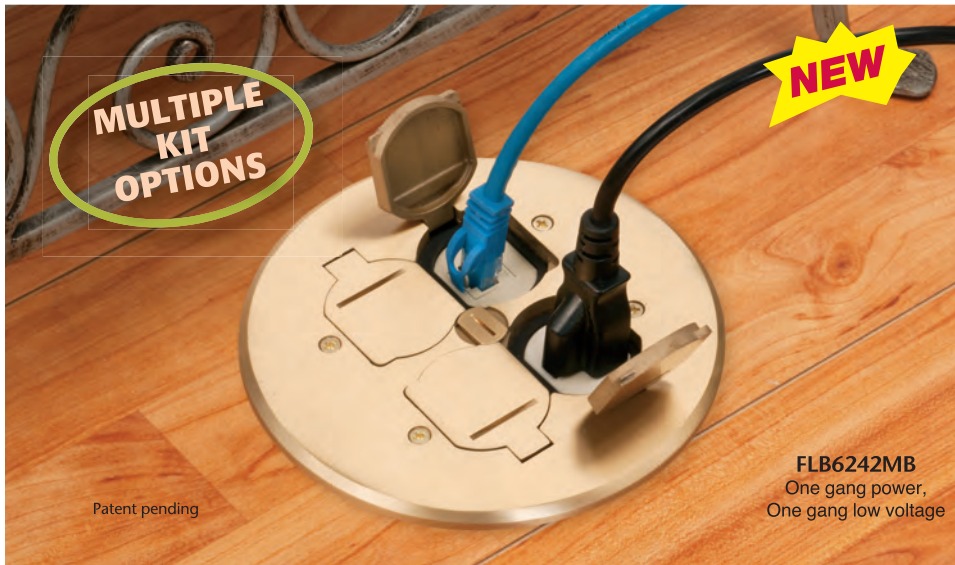


**FLB5552NL**  
combo box with  
nickel-plated cover

### SINGLE & TWO-GANG FLOOR BOX KITS

CATALOG NUMBER	UPC/DCI/NAED MFG. #018997	DESCRIPTION COVERS WITH FLIP LIDS	COVER SIZE & STYLE	UNIT PKG	STD PKG
<b>FLOOR BOX KITS • with TWO-GANG STEEL COMBO BOX</b>					
<b>FLB5552MB</b>	22050	Two-gang steel box with installed low voltage divider, gaskets, (1) duplex receptacle, (1) low voltage duplex plate, mounting screws	Brass with Four Flip Lids	1	4
<b>FLB5552NL</b>	22051		Nickel-plated with Four Flip Lids	1	4
<b>FLOOR BOX KITS • WITH STEEL BOX</b>					
<b>FLB5331MB</b>	22019	Single-gang steel box, gaskets, (1) duplex receptacle, gasketed cover, mounting screws	Brass with Two Flip Lids	1	4
<b>FLB5331NL</b>	22020		Nickel-plated with Two Flip Lids	1	4
<b>FLB5551MB</b>	22038	Two-gang steel box, gaskets, (2) duplex receptacles, gasketed cover, mounting screws	Brass with Four Flip Lids	1	4
<b>FLB5551NL</b>	22039		Nickel-plated w/ Four Flip Lids	1	4
<b>METAL GASKETED COVERS with receptacle</b>					
<b>FLB5330MB</b>	22017	Brass Cover	Single-gang with Two Flip Lids	1	10
<b>FLB5330NL</b>	22018	Nickel-plated Cover	Single-gang with Two Flip Lids	1	10
<b>FLB5550MB</b>	22036	Brass Cover	Two-gang with Two Flip Lids	1	10
<b>FLB5550NL</b>	22037	Nickel-plated Cover	Two-gang with Two Flip Lids	1	10





**FLB6242MB**  
One gang power,  
One gang low voltage

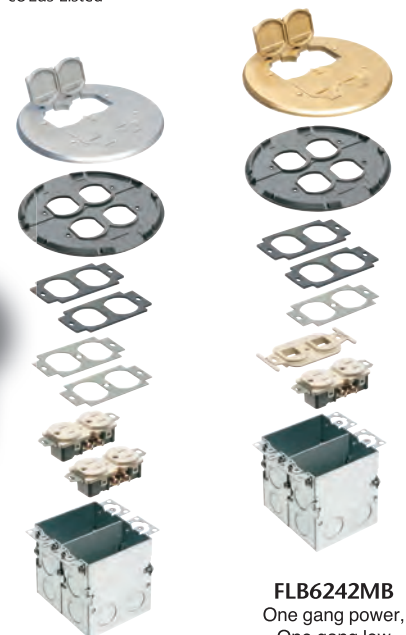


**FLB6240MB**  
Two power  
devices

Arlington's UL LISTED **Steel FLOOR BOX KITS** are the easy way to install a receptacle flush in a NEW or EXISTING floor.

**Designed for flexibility, these kits offer the option of one power and one low voltage device OR two power devices...**

- Brass or nickel-plated brass  
ROUND METAL COVERS
- Gasketed flip lids prevent water intrusion; protects unused box
- cULus Listed



**FLB6240NL**  
Two power  
devices

**FLB6242MB**  
One gang power,  
One gang low  
voltage

CATALOG NUMBER	UPC/DCI/NAED MFG. #018997	DESCRIPTION FINISH/COLOR	DEVICE TYPE	UNIT PKG	STD PKG
<b>FLOOR BOX KIT</b> with 6" ROUND BRASS COVER					
<b>FLB6240MB</b>	22800	Two-gang steel box, four flip lids	Two 110v tamper-resistant receptacles	1	1
<b>FLB6242MB</b>	22804	Two-gang steel box, four flip lids	One low voltage device and one 110v receptacle	1	1
<b>FLOOR BOX KIT</b> with 6" ROUND NICKEL-PLATED COVER					
<b>FLB6240NL</b>	22802	Two-gang steel box, four flip lids	Two 110v tamper-resistant receptacles	1	1
<b>FLB6242NL</b>	22805	Two-gang steel box, four flip lids	One low voltage device and one 110v receptacle	1	1

**Trim Kits Available**  
They include all components shown except the metal box.  
Brass cover: FLB6240MBTK  
Nickel-plated cover: FLB6240NLTK

CATALOG NUMBER	UPC/DCI/NAED MFG. #018997	DESCRIPTION FINISH/COLOR	UNIT PKG	STD PKG
<b>TRIM KITS</b>				
<b>FLB6240MBTK</b>	22801	COVER TRIM KIT with 6" Round, BRASS COVER	1	1
<b>FLB6240NLTK</b>	22803	COVER TRIM KIT with 6" Round, NICKEL-PLATED COVER	1	1





## Hanging Support for Suspended Ceiling Plates, Fixtures & More up to 75 lbs

Now it's easier than ever to get reliable hanging support for fixtures, fixture boxes, cable tray, ceiling plates and other static loads requiring drop wire support!

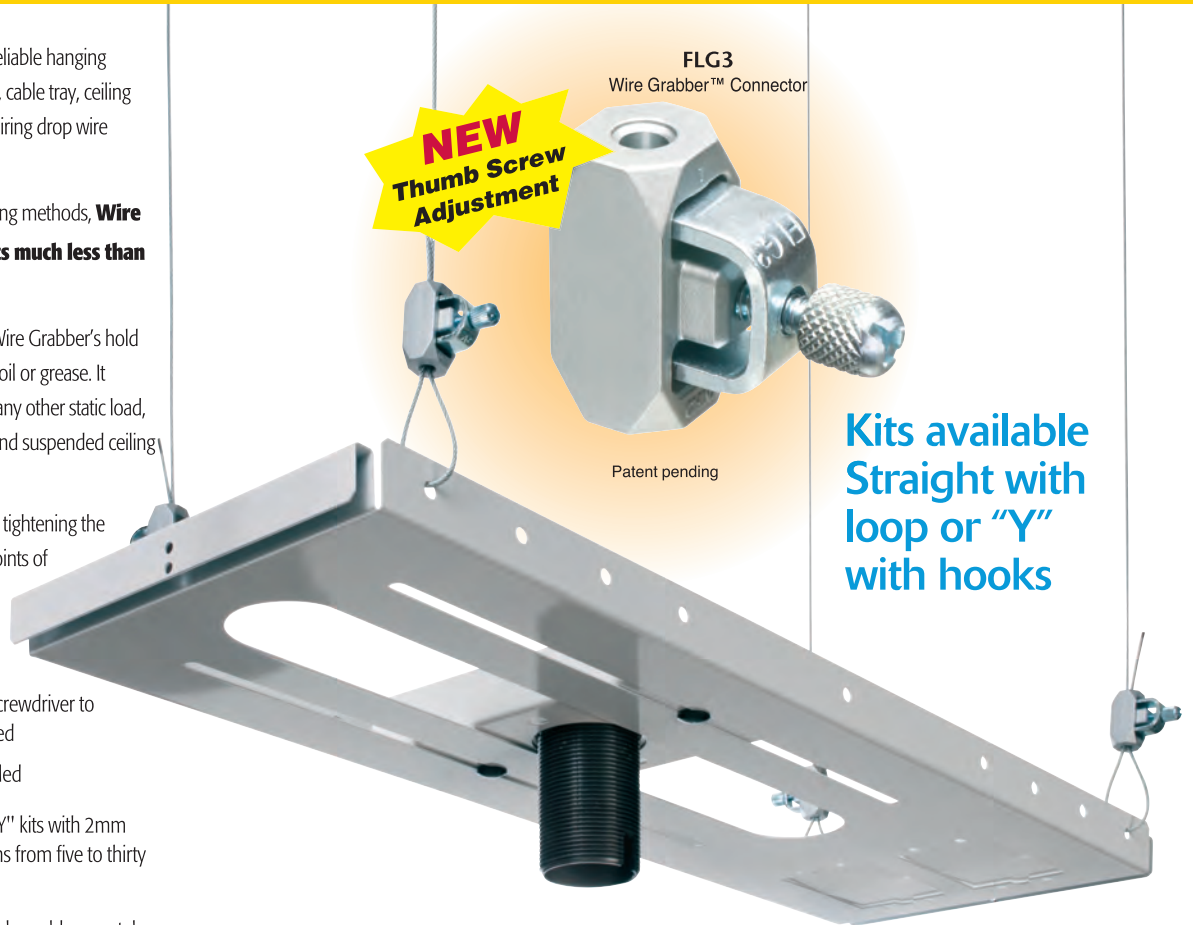
Better than traditional wire-hanging methods, **Wire Grabber™** saves time and **costs much less than competitive products.**

Perfect for dry or wet locations, Wire Grabber's hold on braided wire is unaffected by oil or grease. It holds an angular load as well as any other static load, including high bay light fixtures and suspended ceiling plates.

There's no internal spring. Finger tightening the new thumb screw engages six points of contact for easy length adjustment without kinking or bending the wire.

- Tighten screw with pliers or screwdriver to finish – no special tool required
- Connector ships fully assembled
- *Also available* in straight or "Y" kits with 2mm (.080") braided wire in lengths from five to thirty feet, with loop or hooks

Rolls of braided support wire also sold separately



### Reliable hanging support of static loads up to 75 lbs.

CATALOG NUMBER	UPC/DCI/NAED MFG. #018997	DESCRIPTION WIRE GRABBER™	UNIT/STD PKG
FLG3	01590	Wire hanger for static loads up to 75 lbs on .080" galvanized braided wire	50 per box



#### SINGLE LOOPED END

CATALOG NUMBER	UPC/DCI/NAED MFG. #018997	WIRE LENGTH
DWB0805	06805	5'
DWB0812	06883	10'
DWB0815	06815	15'
DWB0820	06820	20'
DWB0830	06830	30'



#### "Y" w HOOKS

CATALOG NUMBER	UPC/DCI/NAED MFG. #018997	WIRE LENGTH
DWYH0805	11307	5'
DWYH0810	11308	10'
DWY2H0810 (2 PK)	11312	10'
DWYH0815	11309	15'
DWYH0820	11310	20'
DWYH0830	11311	30'



**DWY2H0810**  
2-pack holds up to 150 lbs!



**Arlington**

Wire Grabber Kits include: FLG3 wire hanger, .080" galvanized braided wire in lengths from 5 to 30 ft. (Bulk wire also available)



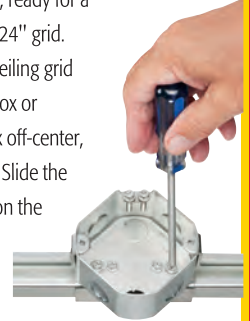
# Box Kits for Suspended Ceilings

## Save Installation Time!



Designed to mount a fixture or fan onto a suspended ceiling grid, Arlington's all-metal fan and fixture boxes save money and installation time!

They ship fully assembled, ready for a centered installation on a 24" grid. Centering the box in the ceiling grid needs no adjustment to box or bracket. To mount the box off-center, simply loosen the screws. Slide the box into its new position on the bracket and retighten the screws.



- One-piece – No parts to lose!
- Faster installation than multi-piece units, secure mounting to ceiling grid
- Usable for Environmental Air Handling spaces

The heavy-duty plated steel FBRS420SC with adjustable mounting bracket, is UL Rated to hold a fixture or a fan up to 70 lbs.

For fixtures only, the lighter weight FS420SCL and FS427SCL not only save time and money, they're tested and listed to hold up to 50 lbs as required by the 2014 NEC code requirements 300.22(c).

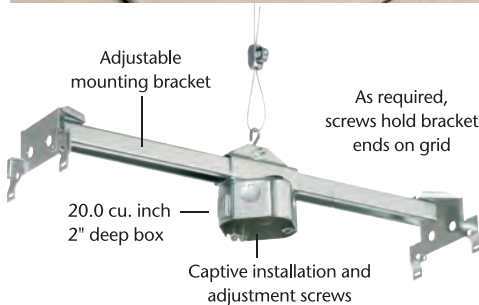
Eliminate guesswork and the cost of field-assembled components with these two products!



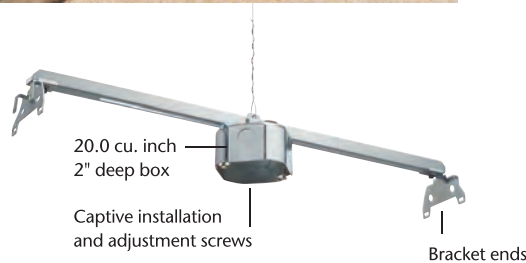
FBRS420SC



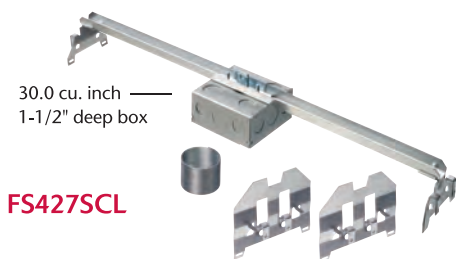
FBRS420SC



FBRS420SC



FS420SCL



FS427SCL

CATALOG NUMBER	UPC/DCI/NAED MFG. #018997	DESCRIPTION	BOX	UNIT PKG	STD PKG
Box Kits for Suspended Ceilings					
<b>for FAN OR FIXTURE</b>					
FBRS420SC	75300	For Fan/Fixture, UL rated up to 70 lbs	20.0 cu in 2" deep	1	5
<b>for FIXTURES ONLY</b>					
FS420SCL	12526	For Fixture, UL rated up to 50 lbs	20.0 cu in 2" deep	1	10
FS427SCL	12537	For Fixture, UL rated up to 50 lbs 4x4 steel fixture box	30.0 cu in 2-1/8" deep	1	10

FBRS420SC includes box with captive installation and adjustment screws, adjustable bracket and Wire Grabber™ kit (connector, 12' .080" braided wire). One-piece FS420SCL and FS427SCL include box with captive installation and adjustment screws, bracket and drop wire. FS427SCL also includes (2) extension brackets for use when attaching a standard 1-1/2" extension ring.

Patented.



## The LOOP™ Cable Hanger

Hanger for communications cable support. For CAT 5, 6, 7 cable and fiber optic cable.

CATALOG NUMBER	UPC/DCI/NAED MFG #01 8997	LOOP SIZE	# CAT 5 CABLES	UNIT PKG	STD PKG	LENGTH	WIDTH	LOAD RATING
TL20	38084	2"	60	100	100	11.375	.652	25
TL25	38085	2-1/2"	100	50	50	12.250	1.500	25
TL2520	22031	2-1/2"	100	20	20	12.250	1.500	25
TL50	38086	5"	300	25	25	22.500	5.000	75
TL20P*	38087	2"	60	100	100	11.375	.652	25
TL25P*	38088	2-1/2"	100	50	50	12.250	1.500	25
TL50P*	38089	5"	300	25	25	22.500	5.000	75

\*\*P\* indicates UV Rated. Patented.

Listed for use in environmental air handling spaces per 2014 NEC requirements 300-22(c).



Listed for Environmental Air Handling Spaces



## Non-Metallic Bushings for Metal Studs

These patented non-metallic bushings fit existing irregular shaped holes in metal studs. They alleviate the need to punch holes in the studs, and the possibility of weakening the structural member.

CATALOG NUMBER	UPC/DCI/NAED MFG. #018997	STUD SIZE	STD PKG
SB13	40115	2 x 4	500
SB130	40130	2 x 4	100



SB13

## Snap-In Bushings

All-plastic, these snap-in type bushings protect cable as it runs through the knockouts in metal studs.

CATALOG NUMBER	UPC/DCI/NAED MFG #01 8997	TRADE SIZE	UNIT PKG	STD PKG
4400	04400	1/2	100	1000
4401	04401	3/4	100	1000
4402	04402	1	50	500
4403	04403	1-1/4	25	250
4404	04404	1-1/2	25	250
4405	04405	2	20	200
4406	04409	2-1/2	20	200



4400



## EMT Bushings

Plastic Bushings for 1/2" to 4" EMT, rigid and PVC meets 2014 NEC code requirements for 300.15(c) protection.

Listed for use in environmental air handling spaces per 2014 NEC code requirements 300.22(c).



EMT50

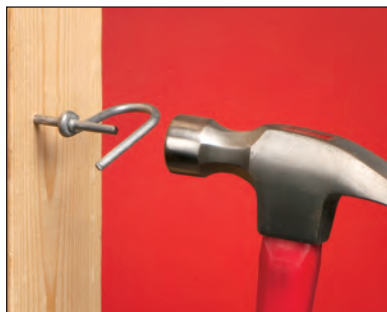
CATALOG NUMBER	UPC/DCI/NAED MFG #01 8997	TRADE SIZE	UNIT PKG	STD PKG
EMT50	12200	1/2	100	1000
EMT75	12205	3/4	100	1000
EMT100	12220	1	100	100
EMT125	12225	1-1/4	100	100
EMT150	12230	1-1/2	100	100
EMT200	12235	2	50	50
EMT250*	12240	2-1/2	25	25
EMT300*	12245	3	25	25
EMT350*	12250	3-1/2	25	25
EMT400*	12255	4	25	25

\*Can also be used for rigid, IMC, and PVC rigid conduit.

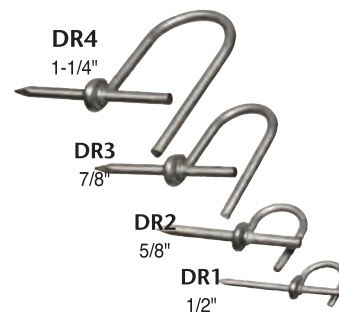


## Galvanized Drive Rings

Supports wire runs on walls, studs, rafters.



CATALOG NUMBER	UPC/DCI/NAED MFG #01 8997	DESCRIPTION DRIVE RING	UNIT PKG	STD PKG
DR1	01551	1/2"	100	1000
DR2	01552	5/8"	50	500
DR3	01553	7/8"	50	500
DR4	01554	1-1/4"	25	250



## Cable Standoffs

Positions non-metallic sheathed cable, phone/data cable, and coaxial cable. Installs with a screw or nail. Nail included with CS4.



CS4



CS7

CATALOG NUMBER	UPC/DCI/NAED MFG #01 8997	STD PKG	LENGTH
CS4	50174	100	4.100
CS7	71007	100	3.490

NOTE: For position only.



## "D" Rings

Non-conductive. Smooth bearing surfaces for easy wire management.



CATALOG NUMBER	UPC/DCI/NAED MFG #01 8997	WIRING SPACE	STD PKG	HEIGHT	OUT TO OUT WIDTH	O.C. BETWEEN OUTER SCREW HOLES	O.C. BETWEEN INNER SCREW HOLES	INSIDE WIDTH
D22	40022	2.25 x 2	100	2.756	4.867	4.381	3.137	1.498
D33	40033	3.25 x 3.25	100	3.768	6.117	5.631	4.387	2.553
D35	40035	3.25 x 5	100	3.730	8.268	7.782	6.538	4.711

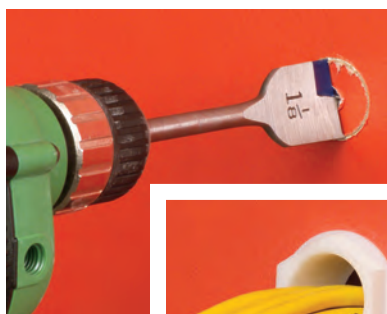
## Wire Bushings

For installing low voltage wires/cables (such as speaker wire) through drywall.

- Use common drill and/or hole saw
- For single or double drywall thicknesses
- Provides smooth exit/entry of cables
- Protects drywall from chipping or flaking
- Made of high-impact plastic
- Color: Paintable (white)

CATALOG NUMBER	UPC/DCI/NAED MFG #01 8997	HOLE SIZE*	SIZE OF OPENING	STD PKG
WB500	52950	0.500	.43	100
WB875	52951	0.875	.75	100
WB112	52952	1.125	1.00	50
WB200	52953	2.125	2.00	50

\* Drill or hole saw size



WB200

WB112

WB875

WB500



Arlington



Arlington's manufacturing facility in Scranton, PA

## Did You Know? ...Arlington's website is mobile responsive!

That means easier, optimized viewing on multiple mobile devices or screen sizes  
– no matter what you're using to access our site... [www.aifittings.com](http://www.aifittings.com)

Use your mobile phone or tablet to learn more about Arlington's low voltage products, the easy way!



### Arlington

1 Stauffer Industrial Park  
Scranton, PA 18517  
800/233.4717  
Fax 570/562.0646  
[www.arlingtonlowvoltage.com](http://www.arlingtonlowvoltage.com)  
[www.aifittings.com](http://www.aifittings.com)

©2009 Arlington Industries, Inc.

REV0817/20M



[www.arlingtonlowvoltage.com](http://www.arlingtonlowvoltage.com)