

AirVac Central Vacuum Systems



*For a cleaner home.
For a healthier home.*



AIRVACTM
Purely Powerful
A Linear Home Technologies Brand

AirVac Central Vacuums

A quieter home.

Remember when vacuuming used to be the noisiest part of housework? Not anymore. AirVac's central power unit is located outside your living area, which reduces vacuuming noise compared to standard portable vacuums.

A healthier home.

Dust is a big deal. The EPA Science Advisory Board says indoor air pollutants rank among the top five public health risks. The National Safety Council points to environmental triggers – including particulate matter – as a risk factor in developing asthma. Both the EPA and the National Lung Association consider a central vacuum system, such as AirVac, a good way to reduce allergy-causing agents.



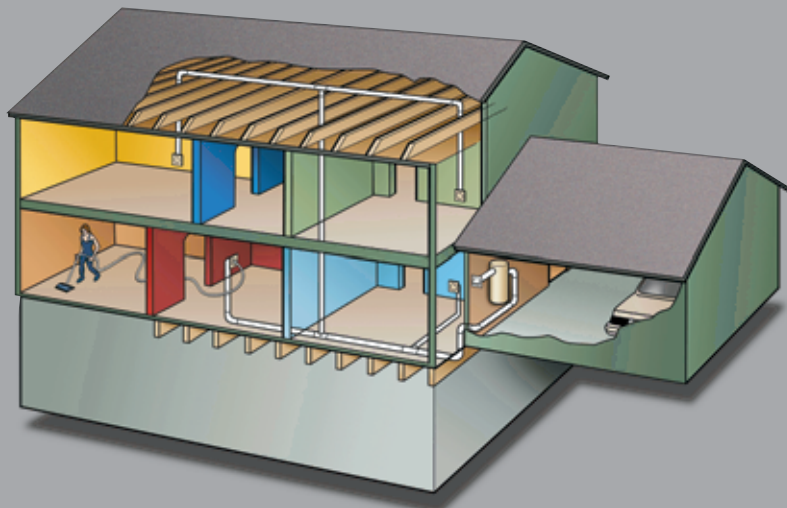
Why AirVac?

Because the best part of an AirVac central vacuum system is what it doesn't have:

- **Noise**
- **Inconvenience**
- **Dust.** Much less dust left behind – in your rugs, on your furniture, in the air and in your family's lungs.

Traditional vacuum cleaners allow too much dust to recirculate – on your rugs, on your furniture, throughout your home. The result: indoor air pollutant levels two to five times – and in some cases 100 times higher – than outdoor levels.

But an AirVac central vacuum system delivers up to three times more power to lift out dirt, dust mites and animal dander from rugs, drapes and furniture upholstery. AirVac then vents it all outside – safely, quietly, permanently to eliminate this health risk to your family. And AirVac comes with an extended 10-year warranty* – that's nothing to sneeze at. **Platinum Series*



Designed to fit your home.

With a little planning, it's easy to install an AirVac system in new or existing homes. The PVC tubing can run through the attic, basement or cold air returns – then lowered or raised behind interior walls to inlet valves that are installed in strategic locations throughout the house (usually about one inlet for every 600 square feet). The central power unit is located in an out-of-the-way area such as a garage, basement or utility room, keeping the living areas quiet, clean and dust free.



Why AirVac works for you.

There's more to AirVac than less noise and a healthier home – because AirVac is more than a vacuum cleaner. It's a complete home cleaning system – designed to make your life easier. Here's how:

- **Convenience.** No hauling heavy and awkward canisters up and down stairs. Simply plug the AirVac hose into one of the inlet valves conveniently located throughout the house.
- **Efficiency.** Time is precious – because AirVac picks up more dust and dirt, you don't have to vacuum as often.
- **Versatility.** A single AirVac unit with easy-to-exchange accessories cleans all home surfaces: carpet, rugs, upholstery, drapes, floors, mini-blinds – even the inside of your cars.
- **Power.** AirVac's power units do the heavy lifting – up to three times more cleaning power than canisters or uprights – because they are built with larger, more rugged motors.
- **Longer carpet and furniture life.** AirVac draws more dirt out of fibers to reduce abrasive wear dramatically.
- **Warranty.** Every AirVac system is backed by Linear's extended five (Red Series) and 10-year warranty (Platinum).
- **Added home value.** AirVac's low installation cost and high retained value add to your home's resale value.

Simply the best. Period.

For more than 50 years American homeowners have relied upon AirVac to do their dirty work. It removes dust from their rugs, furniture and drapes, and it does this with incredible efficiency.

But don't take our word for it. Ask builders, installers and home owners about AirVac power, value and reliability. They'll tell you why AirVac has been the industry leader in designing and manufacturing central vacuum systems. We've revolutionized home vacuuming with superior technology, reliability and value. All this because at Linear we're committed to quality.

AirVac's unique telescoping wand allows you to reach those out-of-the-way areas unobtainable with conventional vacuum systems.



Stairs are no problem with AirVac's adjustable carpet/floor tool. AirVac tool and brush attachments come in a variety of shapes and sizes custom designed for specific uses.



Since dust and dirt accumulates in hard to reach places, the crevice tool delivers AirVac power where you need it.



The deluxe AirVac tool kit includes a convenient horsehair bristle attachment that makes cleaning upholstery a breeze.

There's an AirVac Right for You!

Bag vs. Bagless.

AirVac offers two different high-efficiency approaches to central vacuuming:

- **The Red Series** (bagless) AirVac, with its high efficiency and superior performance, delivers incredible cleaning power. You'll notice the difference in air quality. And a built-in inlet port allows you to plug the hose directly into the unit so you can clean anywhere within 30 feet of the canister. The Red Series AirVac offers an extended five-year warranty.
- **The Platinum Series** (disposable bag) AirVac offers all the benefits of the Red Series plus the convenience of a disposable paper bag and an extended ten-year warranty.

Superior Engineering.

The AirVacs' sleek, new modular design houses a more powerful, yet efficient motor that lowers operating costs and reduces allergy-causing agents as well as noise. To protect the homeowner from dirt, dust, dust mites, pet dander and other pollutants, AirVac utilizes high-efficiency, two-stage filtration media for a cleaner, healthier home.

In addition to superior cleaning, both the Platinum and Red Series AirVacs' have been engineered with the end-user and installer in mind. The power unit now has intake ports on either side allowing for more flexibility with installation – and a translucent debris bucket, located on the bottom of the unit, provides easy access for removal of collected material.



The Platinum's Series unique disposable paper bags have a sliding top that traps and keeps all the dust and debris where it belongs; in the bag.



The AirVac systems' modular components reduce storage space and shipping costs – and simplify handling, installation and service.

Extra Smart!

The four-color segmented display on the Platinum Series shows bag debris level, two-color status indicator shows power and motor life.



Red Series Model (bagless)



Platinum Series Model
(disposable bag)

The AirVac Power Units.

AirVac's central vacuum systems are designed to meet homeowner needs in all price categories and provide an upgrade solution for existing vacuum customers. With four models each in both the **Platinum** and **Red Series**, consumers can choose either disposable bag or bagless systems for homes up to 12,000 square feet.

- **Superior Cleaning** - high-efficiency, two-stage filtration media for a cleaner, healthier home
- **Improved Air Quality** - power unit exhausts outside living area so dust & dirt do not recirculate
- **High Performance** - high air watt rating while maintaining low operating noise
- **Bottom Access** - easy removal of collected debris
- **Intake Ports on Either Side** - allows more flexibility in installation
- **Bi-directional Exhaust Port** - Installer can choose left or right exhaust routing

Red Series Bagless Central Vacuum System

	Motor Type	Water Lift (in H ₂ O)	Air Flow (CFM)	Air Watts (peak)	Filtration	Waste Capacity	Home Sq. Ft. (up to)
AVR3000	2-stage, 120V	123	118	537	to .1 micron	6 gal	3,000
AVR7500	2-stage, 120V	131	118	551	to .1 micron	6 gal	7,500
AVR12000	2-stage, 120V	127	122	570	to .1 micron	6 gal	12,000
AVR24000	2-stage, 240V	137	124	627	to .1 micron	6 gal	12,000

Platinum Series Disposable Bag Central Vacuum System

	Motor Type	Water Lift (in H ₂ O)	Air Flow (CFM)	Air Watts (peak)	Filtration	Waste Capacity	Home Sq. Ft. (up to)
AVP3000	2-stage, 120V	123	118	537	to .1 micron	5.2 gal	3,000
AVP7500	2-stage, 120V	131	118	551	to .1 micron	5.2 gal	7,500
AVP12000	2-stage, 120V	127	122	570	to .1 micron	5.2 gal	12,000
AVP24000	2-stage, 240V	137	124	627	to .1 micron	5.2 gal	12,000

AirVac Red and Platinum Series Power Unit Dimensions: 40" High, 14" Diameter; Weight: 38 Pounds. All units can be exhausted to the outdoors. All units are cETLus listed. Shipping containers meet or exceed all ISTA packaging standards. CFM is measured at 2" open orifice, water lift is at sealed condition.

Tool Kits

By teaming up AirVac's power unit with our wide range of compact and convenient tool kits, you'll realize that there are no limits to "AirVac clean".

- **The Deluxe Tool Kit**
with a stylish cloth caddy to keep everything organized
- **The Deluxe Garage/Car Tool Kit**
to keep your garage and cars cleaner than ever



VMTKD Deluxe Tool Kit

Featuring high-quality horsehair bristles and premium black finish. Stylish cloth caddy organizes and stores components.

Kit Includes:

- Adjustable carpet/floor tool
- Floor/wall tool
- Crevice tool
- Dusting brush
- Upholstery tool with brush
- On-board tool caddy
- Hose rack and cloth caddy bag for tools
- VMTE telescopic vacuum accessory wand



VMGAR Deluxe Garage/Car Tool Kit

Stays "right-on-the-spot" so it's easier to keep garages and vehicles clean. Comes with its own hose and tools so indoor accessories don't get dirty. Tools feature horsehair bristles and black finish.

Kit Includes:

- 30-foot crushproof hose and hose rack
- Upholstery tool with brush
- Floor/wall tool
- VMTEP plastic telescopic vacuum wand
- Dusting brush
- On-board tool caddy
- Crevice tool



Accessory Packages

AirVac has a system package for any need, for any budget:

- **VM4200DS Deluxe SuperSystem Package**
The ultimate accessory package. No additional plug-in cords needed*
- **VM2200DS Standard Electric Package**
Value electric system with 6-foot, 120-volt line cord
- **VM1200S Air-Driven Turbo System Package**
Non-electric system provides maximum economy



VM4200DS

Deluxe SuperSystem Central Vacuum Accessory Package

Features:

- Deluxe direct-connect 30-foot crush-proof high/low voltage swivel hose with 3-position switch (V610PS), use with VMVP valve
- Deluxe 14" self adjusting electric carpet brush with headlight (VM458)
- Deluxe horsehair tools
- VMTC telescopic vacuum accessory wand with cord management
- VMTE telescopic vacuum accessory wand
- Hose rack and cloth bag for tools

*When used with VMVP valve, with 120V wiring



VM2200DS

Standard Electric Central Vacuum Accessory Package

Features:

- 30-foot crush-proof high/low voltage swivel hose with 3-position switch (V510PS) with 6-foot, 120-volt line cord
- Deluxe 14" self adjusting electric carpet brush with headlight (VM458)
- Deluxe horsehair tools
- VMTC telescopic vacuum accessory wand with cord management
- VMTE telescopic vacuum accessory wand
- Hose rack and cloth caddy bag for tools



VM1200S

Air-Driven Turbo Central Vacuum Accessory Package

Features:

- 30-foot low-voltage crush-proof swivel hose with on/off switch (V400S)
- Air-driven 12" turbo carpet brush (VM179B)
- Deluxe horsehair tools
- VMTE telescopic vacuum accessory wand
- Hose rack and cloth caddy bag for tools



All tool kit contents subject to change without notice.

Individual Components

Customize Your AirVac System with Individual Components.

No one knows better than you what it takes to clean your home. That's why AirVac offers you a complete range of powerheads, carpet brushes, floor tools and accessories – making it easier for you to customize your AirVac system for greater flexibility and convenience.



VM458

14" Deluxe Power Brush with Headlight

- Pivoting neck with 90 degree movement and 180° neck swivel, allows handle to lay flat to clean under furniture
- Built in dry squeegee, effective cleaning on hard surfaces, enhanced cleaning on low-pile carpet
- Double chevron composite brushroll
- Automatic electronic brush torque control
- Convenient quick release pedal



VM179B

12" Air-Driven Turbo Brush

- Economical
- Requires no electricity



VM178

10" Air-Driven Turbo Brush

- Economical
- Requires no electricity



VM252

Floor/Wall Tool

- Use on hardwoods, tile and linoleum
- Black with horsehair bristles



Individual Hoses

V222

Central Vacuum Hose

- Crushproof
- Extra-wide 1-3/8" dia.



V361

"Slinky" Central Vacuum Hose

- Retractable wire and vinyl hose
- Expands from 3-1/2 to 21 ft.
- Extra-wide 1-3/8" dia.



V400S

Central Vacuum Hose

- Crushproof
- Extra-wide 1-3/8" dia.
- On/off switch on handle
- With swivel handle



V510PS

Deluxe Central Vacuum Hose

- Crushproof – 1-1/4" dia.
- Off, Vacuum Only, Vacuum and Power Brush
- 6 foot 120-volt line cord

* Off, Vacuum On Only, Vacuum On and Power Brush On



V610PS

Deluxe SuperSystem Central Vacuum Hose

- Crushproof – 1-1/4" dia.
- Off, Vacuum Only, Vacuum and Power Brush
- High-voltage power directly from wall inlet valve

* Off, Vacuum On Only, Vacuum On and Power Brush On



- V222 Central Vacuum Hose
Economical 30-foot hose
- V361 "Slinky" Central Vacuum Hose
Expands from 3-1/2' to 21'
- V400S Central Vacuum Hose
30-foot hose with low-voltage switch
- V510PS Deluxe Central Vacuum Hose
High & low-voltage, 30-foot hose with swivel handle and three-position control switch with 6-foot, 120-volt line cord
- V610PS Deluxe SuperSystem Central Vacuum Hose
High & low-voltage, 30-foot hose with swivel handle and three-position control switch with built-in power connector



Accessories

Throw away that old dustpan. Forget about bending over to sweep up dust. With an AirVac Automatic Dust Pan – built into the baseboard of your kitchen or any other uncarpeted room – sweeping a floor has never been easier. After you sweep up, simply sweep the dust and dirt into the Automatic Dust Pan, which sends it into the Central Vacuum System.



VMSP

Automatic Dust Pans

- Just open the port, sweep dirt directly in and system whisks it away!
- Ideal for dry-spill areas such as kitchens, workshops, entryways, etc.
- Available in black, white and almond

VMSP - White

VMSPA - Almond

VMSPB - Black



VPANW

Flush Mount Dust Pans

- Available in black, white and almond
- Matching color trim plates available for all flush mount dust pans

VPAN - Black (Trim Plate VPANTP)

VPANA - Almond
(Trim Plate VPANTPA)

VPANW - White
(Trim Plate VPANTPW)



VMVP

High-Voltage Wall Inlet Valve

For use with V610PS hose

- In white and almond (VMVPA)

VMVPL

- Includes "Smart" LED light
- In white and almond (VMVPLA)

VM612 - Polarized with recessed plug, 6 ft.

Rough-in required for SuperSystem inlets



VM195

Wall Inlet Valves

- In white, almond and black

VM195 - White

VM195A - Almond

VM195B - Black

VML195 – Includes "Smart" LED light



VMSWIFTER

Wet/Dry Cleaning Pad Tool

- Used with popular wet or dry cleaning pads for cleaning floors
- Compatible with VMTE and VMTEP telescopic wands
- Improves cleaning pad performance with vacuum suction



VM204

Fabric Central Vacuum Hose Cover

- Washable cover protects walls, floors, moulding and trim
- Keeps hoses looking new

VM205 – Deluxe padded

VM700 – Deluxe padded with zipper








Installation Components

As a convenience to our customers, AirVac offers an array of ASTM rated pipe and fittings to make installation a breeze. This page shows a selection of popular Central Vacuum System components. Visit www.purelypowerful.com to see the complete line of AirVac fittings, tools, power units, and accessories.



ASTM Rated & IAPMO Listed Pipe and Fittings

 <p>Central Vacuum PVC Pipe VM101-8 8' long (8-pack) VM101L-10 10' long (10-pack) VM101-384 8' long (384-pack crate)</p>	 <p>VM102-175 Straight Coupling Fitting (175-piece Bulk Pack)</p>	 <p>VM103-75 90° Sweep Fitting (75-piece Bulk Pack)</p>	 <p>VM104-90 90° Short Elbow Fitting (90-piece Bulk Pack)</p>	 <p>VM105-50 90° Double-Sweep 3-Way Sweep "T" Fitting (50-piece Bulk Pack)</p>	 <p>VM106-55 90° Single-Sweep 3-Way "T" Fitting (55-piece Bulk Pack)</p>	 <p>VM107-130 90° Flanged Wall Adapter Fitting (130-piece Bulk Pack)</p>	 <p>VM108-75 90° Flanged Thin Wall Adapter Fitting (75-piece Bulk Pack)</p>
 <p>VM111-90 90° Flanged Wall "T" Fitting (90-piece Bulk Pack)</p>	 <p>VM112-80 45° Short Elbow Fitting (80-piece Bulk Pack)</p>	 <p>VM113-80 45° Short Spigot Fitting (80-piece Bulk Pack)</p>	 <p>VM114-60 45° "Y" Fitting (60-piece Bulk Pack)</p>	 <p>VM115-50 90° Sweep Spigot Fitting (50-piece Bulk Pack)</p>	 <p>VM117-90 Straight Flanged Adapter Fitting (90-piece Bulk Pack)</p>	 <p>VM119-25 Face Plate Extension Fitting (25-piece Bulk Pack)</p>	 <p>VM136-25 Exhaust Vent Cap with Louvered Grille (25-piece Bulk Pack)</p>
 <p>VM137-60 Pipe Cap (60-piece Bulk Pack)</p>	 <p>VM138-100 Pipe Collar (100-piece Bulk Pack)</p>	 <p>VM142-10 Wall Inlet Valve Bracket (10-piece Bulk Pack)</p>	 <p>VM147-300 Pipe Strap with Wire Trap (300-piece Bulk Pack)</p>	 <p>VM149-10 Wall Inlet Valve Bracket (10-piece Bulk Pack)</p>	 <p>VM195 Standard Wall Inlet Valve (Available in White, Almond, & Black)</p>	 <p>VMVP High-Voltage Wall Inlet Valve (White and Ivory) VM612 - 6-ft. High-Voltage Pigtail for Wiring to the Nearest Junction Box</p>	
 <p>VM196-75 Valve Bracket Plaster Guard (75-piece Bulk Pack)</p>	 <p>VM198-15 Cover Plate (15-piece Bulk Pack)</p>	 <p>VM207-75 30° Short Elbow Fitting (75-piece Bulk Pack)</p>	 <p>VM241-15 Wall Inlet Valve Bracket (15-piece Bulk Pack)</p>	 <p>VM450-500 Quick Clip (500-piece Bulk Pack)</p>	 <p>VM495 Wall Inlet Valve Trim Plate</p>		



A Linear Home Technologies Brand

Linear LLC
1950 Camino Vida Roble
Suite 150
Carlsbad, CA 92008
800.421.1587
www.purelypowerful.com